

Image may be representation.
See specifications for product details.



VB20200G-E3/4W

Manufacturer Part Number	VB20200G-E3/4W
Manufacturer	Vishay General Semiconductor – Diodes Division
Allelco Part Number	32D-VB20200G-E3/4W
ECAD Model	Request Free CAD Models
Parts Description	DIODE ARRAY SCHOTTKY 200V TO263
Package	TO-263-3, D ² Pak (2 Leads + Tab), TO-263AB
Data sheet	V(F,B,I)20200G.pdf
RoHs Status	ROHS3 Compliant

Get a Quote

VB20200G-E3/4W - Vishay General Semiconductor - Diodes Division. New Original in Stock. Download Linear Technology VB20200G-E3/4W datasheet/specifications on AllelcoElec.com.
Request a quote for VB20200G-E3/4W, please send us email: info@allelco.com

Specifications

VB20200G-E3/4W Tech Specifications
VB20200G-E3/4W - Vishay General Semiconductor - Diodes Division technical specifications, attributes, parameters

Product Attribute	Attribute Value	Product Attribute	Attribute Value
Manufacturer	Vishay General Semiconductor – Diodes Division	Package	Tube
Voltage - Forward (Vf) (Max) @ If	1.7 V @ 10 A	Operating Temperature - Junction	-40°C ~ 150°C
Voltage - DC Reverse (Vr) (Max)	200 V	Mounting Type	Surface Mount
Technology	Schottky	Diode Configuration	1 Pair Common Cathode
Supplier Device Package	TO-263AB (D ² PAK)	Current - Reverse Leakage @ Vr	150 µA @ 200 V
Speed	Fast Recovery =< 500ns, > 200mA (Io)	Current - Average Rectified (Io) (per Diode)	10A
Series	TMBS®	Base Product Number	VB20200
Package / Case	TO-263-3, D ² Pak (2 Leads + Tab), TO-263AB		

Parts with Similar Specifications

The three parts on the right have similar specifications to Vishay General Semiconductor - Diodes Division VB20200G-E3/4W

Product Attribute				
Part Number	VB20200G-E3/4W	VB20120C-E3/4W	VB20202C-M3/8W	VB20200C-E3/8W
Manufacturer	Vishay General Semiconductor - Diodes Division	Vishay General Semiconductor - Diodes Division	Vishay General Semiconductor - Diodes Division	Vishay General Semiconductor - Diodes Division
Voltage - DC Reverse (Vr) (Max)	200 V	120 V	200 V	200 V
Series	TMBS®	TMBS®	TMBS®	TMBS®
Current - Reverse Leakage @ Vr	150 µA @ 200 V	700 µA @ 120 V	150 µA @ 200 V	150 µA @ 200 V
Speed	Fast Recovery =< 500ns, > 200mA (Io)	Fast Recovery =< 500ns, > 200mA (Io)	Fast Recovery =< 500ns, > 200mA (Io)	Fast Recovery =< 500ns, > 200mA (Io)
Supplier Device Package	TO-263AB (D ² PAK)	TO-263AB (D ² PAK)	TO-263AB (D ² PAK)	TO-263AB (D ² PAK)
Operating Temperature - Junction	-40°C ~ 150°C	-40°C ~ 150°C	-40°C ~ 175°C	-40°C ~ 150°C
Package	Tube	Tube	Tape & Reel (TR)	Tape & Reel (TR)
Package / Case	TO-263-3, D ² Pak (2 Leads + Tab), TO-263AB	TO-263-3, D ² Pak (2 Leads + Tab), TO-263AB	TO-263-3, D ² Pak (2 Leads + Tab), TO-263AB	TO-263-3, D ² Pak (2 Leads + Tab), TO-263AB
Mounting Type	Surface Mount	Surface Mount	Surface Mount	Surface Mount
Voltage - Forward (Vf) (Max) @ If	1.7 V @ 10 A	900 mV @ 10 A	900 mV @ 10 A	1.6 V @ 10 A
Technology	Schottky	Schottky	Schottky	Schottky
Diode Configuration	1 Pair Common Cathode	1 Pair Common Cathode	1 Pair Common Cathode	1 Pair Common Cathode
Base Product Number	VB20200	VB20120	VB20202	VB20200
Current - Average Rectified (Io) (per Diode)	10A	10A	10A	10A

VB20200G-E3/4W Datasheet PDF

Download VB20200G-E3/4W pdf datasheets and Vishay General Semiconductor - Diodes Division documentation for VB20200G-E3/4W - Vishay General Semiconductor - Diodes Division.

Datasheets

[V\(F,B,I\)20200G.pdf](#)

PCN Assembly/Origin

[Mult Dev Assembly Chg 20/Sep/2019.pdf](#)

Customers Also Interested in

Recommended Products

VB20100S-M3/8W	VB20100S-M3/4W	VB20120C-E3/4W	VB20202C-M3/8W	VB20120C	VB20100SG-E3/8W
Vishay General Semiconductor - Diodes Division DIODE SCHOTTKY 120V 20A TO263AB	Vishay General Semiconductor - Diodes Division DIODE SCHOTTKY 100V 20A TO263AB	Vishay General Semiconductor - Diodes Division DIODE ARRAY SCHOTTKY 120V TO263	Vishay General Semiconductor - Diodes Division DIODE SCHOTTKY 200V 20A TO263AB	Electro-Films (EFI) / Vishay	Vishay General Semiconductor - Diodes Division DIODE SCHOTTKY 100V 20A TO263AB

**VB20150S**

Electro-Films (EFI) / Vishay

**VB20200C-E3/8W**Vishay General Semiconductor - Diodes Division
DIODE ARRAY SCHOTTKY 200V TO263**VB20150C-E3**

Electro-Films (EFI) / Vishay

VB20150C-E3/8WVishay General Semiconductor - Diodes Division
DIODE ARRAY SCHOTTKY 150V TO263**VB20120SG**

Electro-Films (EFI) / Vishay

VB20200G-E3/8WVishay General Semiconductor - Diodes Division
DIODE ARRAY SCHOTTKY 200V TO263**VB20120C-E3/8W**Vishay General Semiconductor - Diodes Division
DIODE ARRAY SCHOTTKY 120V TO263**VB20200C-E3/4W**Vishay General Semiconductor - Diodes Division
DIODE ARRAY SCHOTTKY 200V TO263**VB20100SG-E3/4W**Vishay General Semiconductor - Diodes Division
DIODE SCHOTTKY 100V 20A TO263AB**VB20150C**

Electro-Films (EFI) / Vishay

**VB20100SG**

Electro-Films (EFI) / Vishay

**VB20M120C-E3/8W**Vishay General Semiconductor - Diodes Division
DIODE SCHOTTKY 20A 120V TO-263AB

Shipment

Delivery Time

In-stock items can be shipped within 24 hours. Some parts will be arranged for delivery within 1-2 days from the date all items arrive at our warehouse. And Allelco ships order once a day at about 17:00, except Sunday. Once the goods are shipped, the estimated delivery time depends on the shipping methods and Delivery destination. The table below shows are the logistic time for some common countries.

Delivery Cost

> Use your express account for shipment if you have one.

> Use our account for the shipment. Refer to the table below for the approximate charges.

(Different time frame / countries / package size has different price.)

Delivery Method

> Global Common Shipment by DHL / UPS / FedEx / TNT / EMS / SF we support.

> Others more shipping ways, please get in touch with your customer manager.

Common Countries Logistic Time Reference

Region	Country	Logistic Time(Day)
America	United States	5
	Brazil	7
Europe	Germany	5
	United Kingdom	4
	Italy	5
Oceania	Australia	6
	New Zealand	7
Asia	India	6
	Japan	7
Middle East	Israel	6

DHL & FedEx Shipment Charges Reference

Shipment charges(KG)	Reference DHL(USD\$)
0.00kg-1.00kg	USD\$60.00
1.00kg-2.00kg	USD\$70.00
2.00kg-3.00kg	USD\$80.00

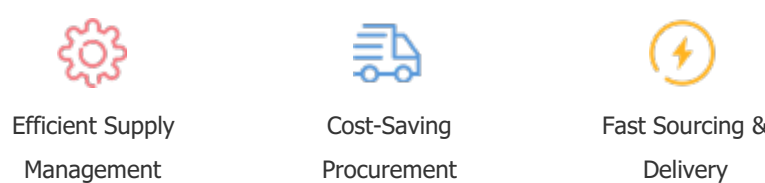
Note: The above table is for reference only. There may have some data bias for the uncontrollable factors.
Contact us if you have any questions.

Payment Support

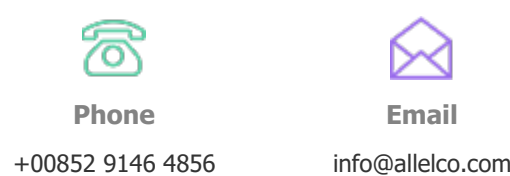
The payment method can be chosen from the methods shown below:
Wire Transfer (T/T, Bank Transfer), Western Union, Credit card, PayPal.



Your Faithful Supply Chain Partner -



Contact us if you have any questions.



Certifications & Memberships



[View More](#)



Contact us

Address: Flat/Rm C 13/F Harvard Commercial Building 105-111 Thomson Road, Wan Chai, Hong Kong

Phone: +00852 9146 4856

Fax: +00852 3010 8510

Email: info@Allelco.com