

Image may be representation.
See specifications for product details.



XCZU15EG-2FFVB1156I

Manufacturer Part Number	XCZU15EG-2FFVB1156I
Manufacturer	AMD Xilinx
Allelco Part Number	32D-XCZU15EG-2FFVB1156I
ECAD Model	Request Free CAD Models
Parts Description	IC SOC CORTEX-A53 1156FCBGA
Package	1156-BBGA, FCBGA
Data sheet	XCZU15EG-2FFVB1156I.pdf
RoHs Status	ROHS3 Compliant

Get a Quote

XCZU15EG-2FFVB1156I - AMD.New Original in Stock. Download Linear Technology XCZU15EG-2FFVB1156I datasheet/specifications on AllelcoElec.com.
Request a quote for XCZU15EG-2FFVB1156I, please send us email: info@allelco.com

Specifications

XCZU15EG-2FFVB1156I Tech Specifications
XCZU15EG-2FFVB1156I - AMD technical specifications, attributes, parameters

Product Attribute	Attribute Value	Product Attribute	Attribute Value
Manufacturer	AMD Xilinx	Package	Tray
Supplier Device Package	1156-FCBGA (35x35)	Operating Temperature	-40°C ~ 100°C (TJ)
Speed	533MHz, 600MHz, 1.3GHz	Number of I/O	328
Series	Zynq® UltraScale+™ MPSoC EG	Flash Size	-
RAM Size	256KB	Core Processor	Quad ARM® Cortex®-A53 MPCore™ with CoreSight™, Dual ARM®Cortex™-R5 with CoreSight™, ARM Mali™-400 MP2
Primary Attributes	Zynq®UltraScale+™ FPGA, 747K+ Logic Cells	Connectivity	CANbus, EBI/EMI, Ethernet, I²C, MMC/SD/SDIO, SPI, UART/USART, USB OTG
Peripherals	DMA, WDT	Base Product Number	XCZU15
Package / Case	1156-BBGA, FCBGA	Architecture	MCU, FPGA

Parts with Similar Specifications

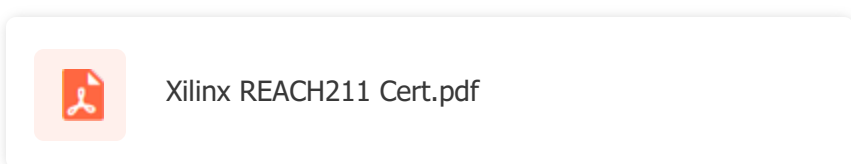
The three parts on the right have similar specifications to AMD XCZU15EG-2FFVB1156I

Product Attribute				
Part Number	XCZU15EG-2FFVB1156I	XCZU15EG-2FFVB1156E	XCZU15EG-L1FFVB1156I	XCZU11EG-2FFVC1760E
Manufacturer	AMD	AMD	AMD	AMD
Core Processor	Quad ARM® Cortex®-A53 MPCore™ with CoreSight™, Dual ARM®Cortex™-R5 with CoreSight™, ARM Mali™-400 MP2	Quad ARM® Cortex®-A53 MPCore™ with CoreSight™, Dual ARM®Cortex™-R5 with CoreSight™, ARM Mali™-400 MP2	Quad ARM® Cortex®-A53 MPCore™ with CoreSight™, Dual ARM®Cortex™-R5 with CoreSight™, ARM Mali™-400 MP2	Quad ARM® Cortex®-A53 MPCore™ with CoreSight™, Dual ARM®Cortex™-R5 with CoreSight™, ARM Mali™-400 MP2
Series	Zynq® UltraScale+™ MPSoC EG	Zynq® UltraScale+™ MPSoC EG	Zynq® UltraScale+™ MPSoC EG	Zynq® UltraScale+™ MPSoC EG
Package	Tray	Tray	Tray	Tray
Flash Size	-	-	-	-
Architecture	MCU, FPGA	MCU, FPGA	MCU, FPGA	MCU, FPGA
Supplier Device Package	1156-FCBGA (35x35)	1156-FCBGA (35x35)	1156-FCBGA (35x35)	1760-FCBGA (42.5x42.5)
Speed	533MHz, 600MHz, 1.3GHz	533MHz, 600MHz, 1.3GHz	500MHz, 600MHz, 1.2GHz	533MHz, 600MHz, 1.3GHz
Operating Temperature	-40°C ~ 100°C (TJ)	0°C ~ 100°C (TJ)	-40°C ~ 100°C (TJ)	0°C ~ 100°C (TJ)
Base Product Number	XCZU15	XCZU15	XCZU15	XCZU11
Number of I/O	328	328	328	512
Package / Case	1156-BBGA, FCBGA	1156-BBGA, FCBGA	1156-BBGA, FCBGA	1760-BBGA, FCBGA
Peripherals	DMA, WDT	DMA, WDT	DMA, WDT	DMA, WDT
Connectivity	CANbus, EBI/EMI, Ethernet, I²C, MMC/SD/SDIO, SPI, UART/USART, USB OTG	CANbus, EBI/EMI, Ethernet, I²C, MMC/SD/SDIO, SPI, UART/USART, USB OTG	CANbus, EBI/EMI, Ethernet, I²C, MMC/SD/SDIO, SPI, UART/USART, USB OTG	CANbus, EBI/EMI, Ethernet, I²C, MMC/SD/SDIO, SPI, UART/USART, USB OTG
Primary Attributes	Zynq®UltraScale+™ FPGA, 747K+ Logic Cells	Zynq®UltraScale+™ FPGA, 747K+ Logic Cells	Zynq®UltraScale+™ FPGA, 747K+ Logic Cells	Zynq®UltraScale+™ FPGA, 653K+ Logic Cells
RAM Size	256KB	256KB	256KB	256KB

XCZU15EG-2FFVB1156I Datasheet PDF

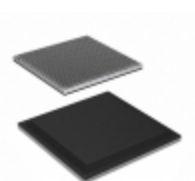
Download XCZU15EG-2FFVB1156I pdf datasheets and AMD documentation for XCZU15EG-2FFVB1156I - AMD.

Environmental Information

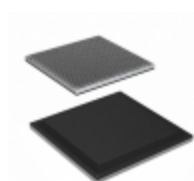


Customers Also Interested in

Recommended Products



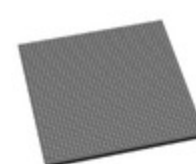
XCZU15EG-2FFVB1156E
AMD
IC SOC CORTEX-A53 1156FCBGA



XCZU15EG-L1FFVB1156I
AMD
IC SOC CORTEX-A53 1156FCBGA



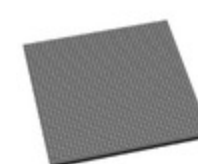
XCZU11EG-2FFVC1760E
AMD
IC SOC CORTEX-A53 1760FCBGA



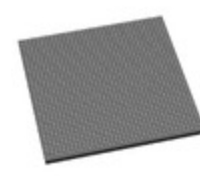
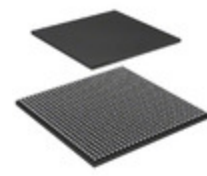
XCZU19EG-2FFVB1517I
AMD
IC SOC CORTEX-A53 1517FCBGA



XCZU11EG-1FFVC1760I
AMD
IC SOC CORTEX-A53 1760FCBGA



XCZU17EG-1FFVB1517E
AMD
IC SOC CORTEX-A53 1517FCBGA



XCZU19EG-1FFVC1760I

AMD
IC SOC CORTEX-A53 1760FCBGA

XCZU15EG-2FFVC900I

AMD
IC SOC CORTEX-A53 900FCBGA

XCZU11EG-3FFVC1760E

AMD
IC SOC CORTEX-A53 1760FCBGA

XCZU19EG-1FFVB1517E

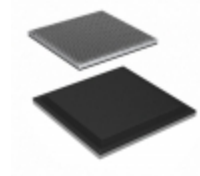
AMD
IC SOC CORTEX-A53 1517FCBGA

XCZU11EG-1FFVC1760E

AMD
IC SOC CORTEX-A53 1760FCBGA

XCZU19EG-2FFVC1760E

AMD
IC SOC CORTEX-A53 1760FCBGA



XCZU19EG-2FFVC1760I

AMD
IC SOC CORTEX-A53 1760FCBGA

XCZU21DR-1FFVD1156I

Xilinx
XCZU21DR-1FFVD1156I

XCZU21DR-2FFVD1156E

Xilinx
XCZU21DR-2FFVD1156E

XCZU15EG-1FFVB1156I

AMD
IC SOC CORTEX-A53 1156FCBGA

XCZU19EG-1FFVC1760E

AMD
IC SOC CORTEX-A53 1760FCBGA

XCZU11EG-2FFVC1760I

AMD
IC SOC CORTEX-A53 1760FCBGA

Shipment

Delivery Time

In-stock items can be shipped within 24 hours. Some parts will be arranged for delivery within 1-2 days from the date all items arrive at our warehouse. And Allelco ships order once a day at about 17:00, except Sunday. Once the goods are shipped, the estimated delivery time depends on the shipping methods and Delivery destination. The table below shows are the logistic time for some common countries.

Delivery Cost

> Use your express account for shipment if you have one.

> Use our account for the shipment. Refer to the table below for the approximate charges.

(Different time frame / countries / package size has different price.)

Delivery Method

> Global Common Shipment by DHL / UPS / FedEx / TNT / EMS / SF we support.

> Others more shipping ways, please get in touch with your customer manager.

Common Countries Logistic Time Reference

Region	Country	Logistic Time(Day)
America	United States	5
	Brazil	7
Europe	Germany	5
	United Kingdom	4
	Italy	5
Oceania	Australia	6
	New Zealand	7
Asia	India	6
	Japan	7
Middle East	Israel	6

DHL & FedEx Shipment Charges Reference

Shipment charges(KG)	Reference DHL(USD\$)
0.00kg-1.00kg	USD\$60.00
1.00kg-2.00kg	USD\$70.00
2.00kg-3.00kg	USD\$80.00

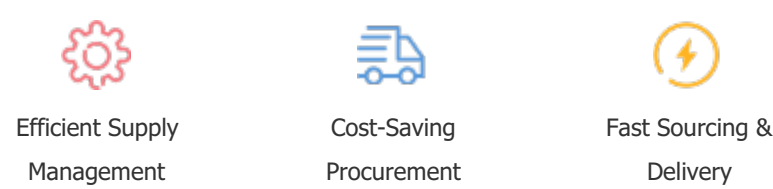
Note: The above table is for reference only. There may have some data bias for the uncontrollable factors. Contact us if you have any questions.

Payment Support

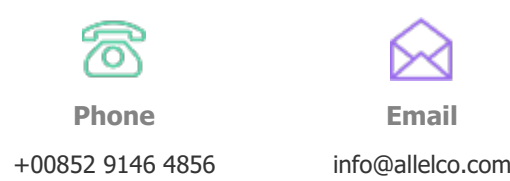
The payment method can be chosen from the methods shown below:
Wire Transfer (T/T, Bank Transfer), Western Union, Credit card, PayPal.



Your Faithful Supply Chain Partner -



Contact us if you have any questions.



Certifications & Memberships



[View More](#)



Contact us

Address: Flat/Rm C 13/F Harvard Commercial Building 105-111 Thomson Road, Wan Chai, Hong Kong

Phone: +00852 9146 4856

Fax: +00852 3010 8510

Email: info@Allelco.com

Copyright © 2012-2023 AllelcoElec.com. All rights reserved.