



Image may be representation.
See specifications for product details.



ADA4084-2ARZ-R7

Manufacturer Part Number	ADA4084-2ARZ-R7
Manufacturer	Analog Devices, Inc.
Allelco Part Number	32D-ADA4084-2ARZ-R7
ECAD Model	PCB Symbol, Footprint & 3D Model
Parts Description	IC OPAMP GP 2 CIRCUIT 8SOIC
Package	8-SOIC (0.154", 3.90mm Width)
Data sheet	ADA4084-2ARZ-R7.pdf
RoHs Status	ROHS3 Compliant

Get a Quote

ADA4084-2ARZ-R7 - Analog Devices Inc..New Original in Stock. Download Linear Technology ADA4084-2ARZ-R7 datasheet/specifications on AllelcoElec.com.
Request a quote for ADA4084-2ARZ-R7, please send us email: info@allelco.com

Specifications

ADA4084-2ARZ-R7 Tech Specifications
ADA4084-2ARZ-R7 - Analog Devices Inc. technical specifications, attributes, parameters

Product Attribute	Attribute Value	Product Attribute	Attribute Value
Manufacturer	Analog Devices, Inc.	Operating Temperature	-40°C ~ 125°C
Voltage - Supply Span (Min)	3 V	Number of Circuits	2
Voltage - Supply Span (Max)	30 V	Mounting Type	Surface Mount
Voltage - Input Offset	30 µV	Gain Bandwidth Product	15.9 MHz
Supplier Device Package	8-SOIC	Current - Supply	625µA (x2 Channels)
Slew Rate	4.6V/µs	Current - Output / Channel	30 mA
Series	-	Current - Input Bias	140 nA
Package / Case	8-SOIC (0.154", 3.90mm Width)	Base Product Number	ADA4084
Package	Tape & Reel (TR)	Amplifier Type	General Purpose
Output Type	Rail-to-Rail	-3db Bandwidth	13.9 MHz

Parts with Similar Specifications

The three parts on the right have similar specifications to Analog Devices Inc. ADA4084-2ARZ-R7

Product Attribute				
Part Number	ADA4084-2ARZ-R7	ADA4084-4ARUZ	ADA4092-4ARUZ-RL	ADA4091-4ARUZ-RL
Manufacturer	Analog Devices Inc.	Analog Devices Inc.	Analog Devices Inc.	Analog Devices Inc.
Current - Output / Channel	30 mA	30 mA	20 mA	20 mA
Voltage - Input Offset	30 µV	60 µV	200 µV	35 µV
-3db Bandwidth	13.9 MHz	13.9 MHz	-	-
Amplifier Type	General Purpose	General Purpose	General Purpose	General Purpose
Base Product Number	ADA4084	ADA4084	ADA4092	ADA4091
Number of Circuits	2	4	4	4
Voltage - Supply Span (Min)	3 V	3 V	3 V	3 V
Slew Rate	4.6V/µs	4.6V/µs	0.4V/µs	0.46V/µs
Supplier Device Package	8-SOIC	14-TSSOP	14-TSSOP	14-TSSOP
Voltage - Supply Span (Max)	30 V	30 V	30 V	30 V
Package	Tape & Reel (TR)	Tube	Tape & Reel (TR)	Tape & Reel (TR)
Current - Input Bias	140 nA	140 nA	50 nA	50 nA
Output Type	Rail-to-Rail	Rail-to-Rail	Rail-to-Rail	Rail-to-Rail
Current - Supply	625µA (x2 Channels)	625µA (x4 Channels)	200µA (x4 Channels)	200µA (x4 Channels)
Series	-	-	-	-
Mounting Type	Surface Mount	Surface Mount	Surface Mount	Surface Mount
Operating Temperature	-40°C ~ 125°C	-40°C ~ 125°C	-40°C ~ 125°C	-40°C ~ 125°C
Gain Bandwidth Product	15.9 MHz	15.9 MHz	1.4 MHz	1.27 MHz
Package / Case	8-SOIC (0.154", 3.90mm Width)	14-TSSOP (0.173", 4.40mm Width)	14-TSSOP (0.173", 4.40mm Width)	14-TSSOP (0.173", 4.40mm Width)

ADA4084-2ARZ-R7 Datasheet PDF

Download ADA4084-2ARZ-R7 pdf datasheets and Analog Devices Inc. documentation for ADA4084-2ARZ-R7 - Analog Devices Inc..

Other Related Documents

[Tape and Reel Packaging.pdf](#)

PCN Assembly/Origin

[Mult Dev 04/Apr/2023.pdf](#)

Customers Also Interested in

Recommended Products



ADA4084-4ARUZ

Analog Devices Inc.
IC OPAMP GP 4 CIRCUIT 14TSSOP



ADA4092-4ARUZ-RL

Analog Devices Inc.
IC OPAMP GP 4 CIRCUIT 14TSSOP



ADA4091-4ARUZ-RL

Analog Devices Inc.
IC OPAMP GP 4 CIRCUIT 14TSSOP



ADA4091-4ARUZ

Analog Devices Inc.
IC OPAMP GP 4 CIRCUIT 14TSSOP



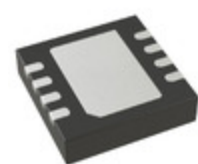
ADA4084-2ARMZ-R7

Analog Devices Inc.
IC OPAMP GP 2 CIRCUIT 8MSOP



ADA4084-2ARMZ

Analog Devices Inc.
IC OPAMP GP 2 CIRCUIT 8MSOP



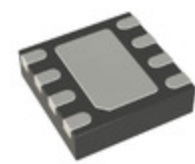
ADA4091-2ACPZ-R2

Analog Devices Inc.
IC OPAMP GP 2 CIRCUIT 8LFCSP



ADA4077-4ARZ-R7

Analog Devices Inc.
IC OPAMP GP 4 CIRCUIT 14SOIC



ADA4096-2ACPZ-R7

Analog Devices Inc.
IC OPAMP GP 2 CIRCUIT 8LFCSP



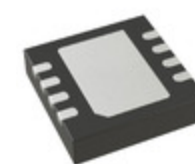
ADA4084-2ARZ

Analog Devices Inc.
IC OPAMP GP 2 CIRCUIT 8SOIC



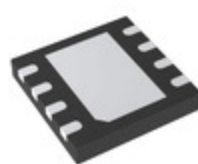
ADA4091-2ARZ

Analog Devices Inc.
IC OPAMP GP 2 CIRCUIT 8SOIC



ADA4091-2ACPZ-R7

Analog Devices Inc.
IC OPAMP GP 2 CIRCUIT 8LFCSP



ADA4084-2ACPZ-R7

Analog Devices Inc.
IC OPAMP GP 2 CIRCUIT 8LFCSP



ADA4084-1ARZ-R7

Analog Devices Inc.
IC OPAMP GP 1 CIRCUIT 8SOIC



ADA4092-4ARUZ

Analog Devices Inc.
IC OPAMP GP 4 CIRCUIT 14TSSOP



ADA4084-1ARZ

Analog Devices Inc.
IC OPAMP GP 1 CIRCUIT 8SOIC



ADA4084-1ARJZ-R7

Analog Devices Inc.
IC OPAMP GP 1 CIRCUIT SOT23-5



ADA4084-2ARMZ-RL7

ADI (Analog Devices, Inc.)

Shipment

Delivery Time

In-stock items can be shipped within 24 hours. Some parts will be arranged for delivery within 1-2 days from the date all items arrive at our warehouse. And Allelco ships order once a day at about 17:00, except Sunday. Once the goods are shipped, the estimated delivery time depends on the shipping methods and Delivery destination. The table below shows are the logistic time for some common countries.

Delivery Cost

> Use your express account for shipment if you have one.

> Use our account for the shipment. Refer to the table below for the approximate charges.

(Different time frame / countries / package size has different price.)

Delivery Method

> Global Common Shipment by DHL / UPS / FedEx / TNT / EMS / SF we support.

> Others more shipping ways, please get in touch with your customer manager.

Common Countries Logistic Time Reference		
Region	Country	Logistic Time(Day)
America	United States	5
	Brazil	7
Europe	Germany	5
	United Kingdom	4
	Italy	5
Oceania	Australia	6
	New Zealand	7
Asia	India	6
	Japan	7
Middle East	Israel	6

DHL & FedEx Shipment Charges Reference	
Shipment charges(KG)	Reference DHL(USD\$)
0.00kg-1.00kg	USD\$60.00
1.00kg-2.00kg	USD\$70.00
2.00kg-3.00kg	USD\$80.00

Note: The above table is for reference only. There may have some data bias for the uncontrollable factors.

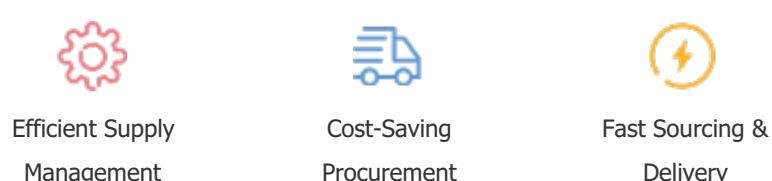
Contact us if you have any questions.

Payment Support

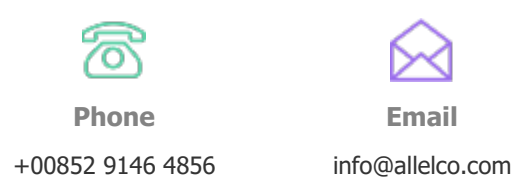
The payment method can be chosen from the methods shown below:
Wire Transfer (T/T, Bank Transfer), Western Union, Credit card,
PayPal.



Your Faithful Supply Chain Partner -



Contact us if you have any questions.



Certifications & Memberships



View More



WWW.ALLELCOELEC.COM

Contact us

Address: Flat/Rm C 13/F Harvard Commercial Building 105-111 Thomson Road, Wan Chai, Hong Kong

Phone: +00852 9146 4856

Fax: +00852 3010 8510

Email: info@allelco.com

Copyright © 2012-2023 AllelcoElec.com. All rights reserved.