

Image may be representation.
See specifications for product details.



LD49300PT12R

Manufacturer Part Number	LD49300PT12R
Manufacturer	STMicroelectronics
Allelco Part Number	32D-LD49300PT12R
ECAD Model	PCB Footprint and Symbol
Parts Description	IC REG LINEAR 1.2V 3A PPAK
Package	TO-252-5, DPak (4 Leads + Tab), TO-252AD
Data sheet	LD49300.pdf
RoHs Status	ROHS3 Compliant

Get a Quote

LD49300PT12R - STMicroelectronics.New Original in Stock. Download Linear Technology LD49300PT12R datasheet/specifications on AllelcoElec.com.
Request a quote for LD49300PT12R, please send us email: info@allelco.com

Specifications

LD49300PT12R Tech Specifications

LD49300PT12R - STMicroelectronics technical specifications, attributes, parameters

Product Attribute	Attribute Value	Product Attribute	Attribute Value
Manufacturer	STMicroelectronics	Output Type	Fixed
Voltage Dropout (Max)	0.4V @ 3A	Output Configuration	Positive
Voltage - Output (Min/Fixed)	1.2V	Operating Temperature	-25°C ~ 125°C
Voltage - Output (Max)	-	Number of Regulators	1
Voltage - Input (Max)	5.5V	Mounting Type	Surface Mount
Supplier Device Package	PPAK	Current - Supply (Max)	6 mA
Series	-	Current - Quiescent (Iq)	4 mA
Protection Features	Over Current, Over Temperature	Current - Output	3A
Package / Case	TO-252-5, DPak (4 Leads + Tab), TO-252AD	Control Features	Enable
Package	Cut Tape (CT)	Base Product Number	LD49300
PSRR	68dB (120Hz)		

Parts with Similar Specifications

The three parts on the right have similar specifications to STMicroelectronics LD49300PT12R

Product Attribute				
Part Number	LD49300PT12R	LD49100PURY	LD49100PU25RY	LD49300PT08R
Manufacturer	STMicroelectronics	STMicroelectronics	STMicroelectronics	STMicroelectronics
Voltage - Output (Min/Fixed)	1.2V	0.8V	2.5V	0.8V
Current - Supply (Max)	6 mA	300 µA	300 µA	6 mA
Operating Temperature	-25°C ~ 125°C	-40°C ~ 125°C (TJ)	-40°C ~ 125°C (TJ)	-25°C ~ 125°C
Voltage - Output (Max)	-	4.5V	-	4.5V
Base Product Number	LD49300	LD49100	LD49100	LD49300
Control Features	Enable	Enable	Enable	Enable
Supplier Device Package	PPAK	6-DFN (3x3)	6-DFN (3x3)	PPAK
Voltage Dropout (Max)	0.4V @ 3A	0.4V @ 1A	0.4V @ 1A	0.4V @ 3A
Output Type	Fixed	Adjustable	Fixed	Adjustable
Number of Regulators	1	1	1	1
PSRR	68dB (120Hz)	70dB ~ 65dB (1kHz ~ 10kHz)	65dB ~ 62dB (1kHz ~ 10kHz)	68dB (120Hz)
Package / Case	TO-252-5, DPak (4 Leads + Tab), TO-252AD	6-VDFN Exposed Pad	6-VDFN Exposed Pad	TO-252-5, DPak (4 Leads + Tab), TO-252AD
Voltage - Input (Max)	5.5V	5.5V	5.5V	5.5V
Current - Output	3A	1A	1A	3A
Package	Cut Tape (CT)	Tape & Reel (TR)	Tape & Reel (TR)	Cut Tape (CT)
Current - Quiescent (Iq)	4 mA	50 µA	50 µA	4 mA
Output Configuration	Positive	Positive	Positive	Positive
Mounting Type	Surface Mount	Surface Mount, Wettable Flank	Surface Mount, Wettable Flank	Surface Mount
Protection Features	Over Current, Over Temperature	Over Current, Over Temperature	Over Current, Over Temperature	Over Current, Over Temperature
Series	-	Automotive, AEC-Q100	Automotive, AEC-Q100	-

LD49300PT12R Datasheet PDF

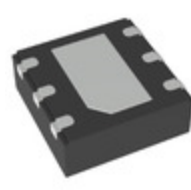
Download LD49300PT12R pdf datasheets and STMicroelectronics documentation for LD49300PT12R - STMicroelectronics.

Datasheets



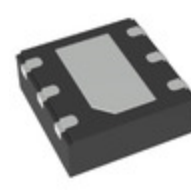
Customers Also Interested in

Recommended Products



LD471650

Powerex Inc.
SCR MOD ISO DUAL 1600V 500A



LD49100PU25RY

STMicroelectronics
IC REG LINEAR 2.5V 1A 6DFN



LD49300PT08R

STMicroelectronics
IC REG LINEAR POS ADJ 3A PPAK



LD49150PT12R

STMicroelectronics
IC REG LINEAR 1.2V 1.5A PPAK



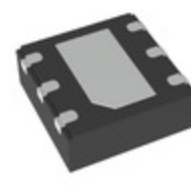
LD471250

Powerex Inc.
SCR MOD ISO DUAL 1200V 500A



LD431850

Powerex Inc.
DUAL SCR MODULE 500A 1800V

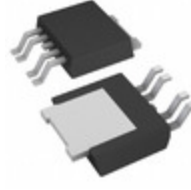


LD49100PU18RY

STMicroelectronics
IC REG LINEAR 1.8V 1A 6DFN



NO PICTURE



LD49150PT08R

STMicroelectronics
IC REG LINEAR POS ADJ 1V 1.5A PPAK



life.augmented

LD44E08Y01

Tyco Electronics
IGBT Module

LD49150PT08R

STMicroelectronics
IC REG LINEAR POS ADJ 1.5A PPAK

LD432043

Powerex Inc.
SCR MOD ISO DUAL 2000V 430A

LD431850NC

Powerex, Inc.
IGBT Module

LD432243

Powerex Inc.
SCR MOD ISO DUAL 2200V 430A

LD49300PT08

STMicroelectronics

Shipment

Delivery Time

In-stock items can be shipped within 24 hours. Some parts will be arranged for delivery within 1-2 days from the date all items arrive at our warehouse. And Allelco ships order once a day at about 17:00, except Sunday. Once the goods are shipped, the estimated delivery time depends on the shipping methods and Delivery destination. The table below shows are the logistic time for some common countries.

Delivery Cost

> Use your express account for shipment if you have one.

> Use our account for the shipment. Refer to the table below for the approximate charges.

(Different time frame / countries / package size has different price.)

Delivery Method

> Global Common Shipment by DHL / UPS / FedEx / TNT / EMS / SF we support.

> Others more shipping ways, please get in touch with your customer manager.

Common Countries Logistic Time Reference

Region	Country	Logistic Time(Day)
America	United States	5
	Brazil	7
Europe	Germany	5
	United Kingdom	4
	Italy	5
Oceania	Australia	6
	New Zealand	7
Asia	India	6
	Japan	7
Middle East	Israel	6

DHL & FedEx Shipment Charges Reference

Shipment charges(KG)	Reference DHL(USD\$)
0.00kg-1.00kg	USD\$60.00
1.00kg-2.00kg	USD\$70.00
2.00kg-3.00kg	USD\$80.00

Note: The above table is for reference only. There may have some data bias for the uncontrollable factors.

Contact us if you have any questions.

Payment Support

The payment method can be chosen from the methods shown below:

Wire Transfer (T/T, Bank Transfer), Western Union, Credit card, PayPal.



Your Faithful Supply Chain Partner -



Efficient Supply Management



Cost-Saving Procurement



Fast Sourcing & Delivery

Contact us if you have any questions.



Phone

+00852 9146 4856



Email

info@allelco.com

Certifications & Memberships



View More



ALLELCO LIMITED
WWW.ALLELCOELEC.COM

Contact us

Address: Flat/Rm C 13/F Harvard Commercial Building 105-111 Thomson Road, Wan Chai, Hong Kong

Phone: +00852 9146 4856

Fax: +00852 3010 8510

Email: info@Allelco.com

Copyright © 2012-2023 AllelcoElec.com. All rights reserved.