



Image may be representation.
See specifications for product details.



TSOP57438TT1

Manufacturer Part Number	TSOP57438TT1
Manufacturer	Vishay Semiconductor - Opto Division
Allelco Part Number	32D-TSOP57438TT1
ECAD Model	PCB Symbol, Footprint & 3D Model
Parts Description	SENSOR REMOTE REC 38.0KHZ 40M
Package	
Data sheet	TSOP572..., TSOP574...pdf TSOP572..., TSOP574...pdf
RoHs Status	ROHS3 Compliant

[Get a Quote](#)

TSOP57438TT1 - Vishay Semiconductor Opto Division. New Original in Stock. Download Linear Technology TSOP57438TT1 datasheet/specifications on AllelcoElec.com. Request a quote for TSOP57438TT1, please send us email: info@allelco.com

Specifications

TSOP57438TT1 Tech Specifications
TSOP57438TT1 - Vishay Semiconductor Opto Division technical specifications, attributes, parameters

Product Attribute	Attribute Value	Product Attribute	Attribute Value
Manufacturer	Vishay Semiconductor - Opto Division	Operating Temperature	-25°C ~ 85°C (TA)
Voltage - Supply	2.5 V ~ 5.5 V	Mounting Type	Surface Mount
Series	-	Current - Supply	700 µA
Sensing Distance	40m	Base Product Number	TSOP57438
Package	Tape & Reel (TR)	B.P.F. Center Frequency	38.0kHz
Orientation	Top View		

Parts with Similar Specifications

The three parts on the right have similar specifications to Vishay Semiconductor Opto Division TSOP57438TT1

Product Attribute				
Part Number	TSOP57438TT1	TSOP58438	TSOP57240TT1	TSOP58438CA1
Manufacturer	Vishay Semiconductor Opto Division	Vishay Semiconductor Opto Division	Vishay Semiconductor Opto Division	Vishay Semiconductor Opto Division
Mounting Type	Surface Mount	Through Hole	Surface Mount	Through Hole
Current - Supply	700 µA	700 µA	700 µA	700 µA
Operating Temperature	-25°C ~ 85°C (TA)	-25°C ~ 85°C (TA)	-25°C ~ 85°C (TA)	-25°C ~ 85°C (TA)
Orientation	Top View	Side View	Top View	Side View
Sensing Distance	40m	40m	40m	18m
Series	-	-	TSOP572	TSOP584
Base Product Number	TSOP57438	TSOP58438	TSOP57240	-
B.P.F. Center Frequency	38.0kHz	38.0kHz	40.0kHz	38.0kHz
Voltage - Supply	2.5 V ~ 5.5 V	2.5 V ~ 5.5 V	2.5 V ~ 5.5 V	2.5 V ~ 5.5 V
Package	Tape & Reel (TR)	Bulk	Tape & Reel (TR)	Bulk

TSOP57438TT1 Datasheet PDF

Download TSOP57438TT1 pdf datasheets and Vishay Semiconductor Opto Division documentation for TSOP57438TT1 - Vishay Semiconductor Opto Division.

Datasheets

[TSOP572..., TSOP574...pdf](#)

PCN Design/Specification

[Mult Devs Product Improvement 04/Aug/2022.pdf](#)

HTML Datasheet

[TSOP572..., TSOP574...pdf](#)

Customers Also Interested in

Recommended Products

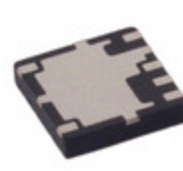
TSOP58140 Electro-Films (EFI) / Vishay	TSOP58438 Vishay Semiconductor Opto Division SENSOR REMOTE REC 38.0KHZ 40M	TSOP57240TT1 Vishay Semiconductor Opto Division SENSOR REMOTE REC 40.0KHZ 40M	TSOP5321TT Electro-Films (EFI) / Vishay	TSOP53436DF1P Electro-Films (EFI) / Vishay	TSOP58438CA1 Vishay Semiconductor Opto Division OPTOCOUPLER

TSOP58438SB1

Electro-Films (EFI) / Vishay

**TSOP58236**Vishay Semiconductor Opto Division
SENSOR REMOTE REC 36.0KHZ 40M**TSOP57436TT1**Vishay Semiconductor Opto Division
SENSOR REMOTE REC 36.0KHZ 40M**TSOP54T30B-DX-D**

TOPLINE

TSOP57338TT1Vishay Semiconductor Opto Division
SENSOR REMOTE REC 38.0KHZ 40M**TSOP57238TT1**Vishay Semiconductor Opto Division
SENSOR REMOTE REC 38.0KHZ 40M**TSOP58338**Vishay Semiconductor Opto Division
SENSOR REMOTE REC 38.0KHZ 40M**TSOP53338P16TR**

Electro-Films (EFI) / Vishay

TSOP5038TR

Electro-Films (EFI) / Vishay

**TSOP58238**Vishay Semiconductor Opto Division
SENSOR REMOTE REC 38.0KHZ 40M**TSOP5236TT**

Electro-Films (EFI) / Vishay

**TSOP58436**Vishay Semiconductor Opto Division
SENSOR REMOTE REC 36.0KHZ 40M**Shipment****Delivery Time**

In-stock items can be shipped within 24 hours. Some parts will be arranged for delivery within 1-2 days from the date all items arrive at our warehouse. And Allelco ships order once a day at about 17:00, except Sunday. Once the goods are shipped, the estimated delivery time depends on the shipping methods and Delivery destination. The table below shows are the logistic time for some common countries.

Delivery Cost

> Use your express account for shipment if you have one.

> Use our account for the shipment. Refer to the table below for the approximate charges.

(Different time frame / countries / package size has different price.)

Delivery Method

> Global Common Shipment by DHL / UPS / FedEx / TNT / EMS / SF we support.

> Others more shipping ways, please get in touch with your customer manager.

Common Countries Logistic Time Reference

Region	Country	Logistic Time(Day)
America	United States	5
	Brazil	7
Europe	Germany	5
	United Kingdom	4
	Italy	5
Oceania	Australia	6
	New Zealand	7
Asia	India	6
	Japan	7
Middle East	Israel	6

DHL & FedEx Shipment Charges Reference

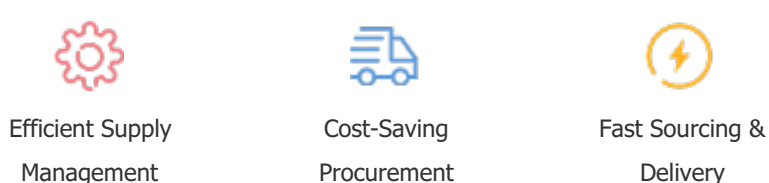
Shipment charges(KG)	Reference DHL(USD\$)
0.00kg-1.00kg	USD\$60.00
1.00kg-2.00kg	USD\$70.00
2.00kg-3.00kg	USD\$80.00

Note: The above table is for reference only. There may have some data bias for the uncontrollable factors.
Contact us if you have any questions.

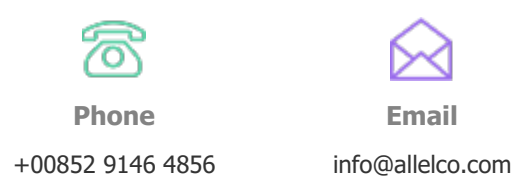
Payment Support

The payment method can be chosen from the methods shown below:

Wire Transfer (T/T, Bank Transfer), Western Union, Credit card, PayPal.

**Your Faithful Supply Chain Partner -**

Contact us if you have any questions.

**Certifications & Memberships**

[View More](#)

**Contact us**

Address: Flat/Rm C 13/F Harvard Commercial Building 105-111 Thomson Road, Wan Chai, Hong Kong

Phone: +00852 9146 4856

Fax: +00852 3010 8510

Email: info@Allelco.com

Copyright © 2012-2023 AllelcoElec.com. All rights reserved.