

Image may be representation.
See specifications for product details.



MAX9030AXT

Manufacturer Part Number	MAX9030AXT
Manufacturer	Maxim Integrated
Allelco Part Number	32D-MAX9030AXT
ECAD Model	Request Free CAD Models
Parts Description	IC COMPARATOR 1 GEN PUR SC70-6
Package	6-TSSOP, SC-88, SOT-363
Data sheet	MAX9030AXT.pdf

Get a Quote

MAX9030AXT - Analog Devices Inc./Maxim Integrated. New Original in Stock. Download Linear Technology MAX9030AXT datasheet/specifications on AllelcoElec.com. Request a quote for MAX9030AXT, please send us email: info@allelco.com

Specifications

MAX9030AXT Tech Specifications
MAX9030AXT - Analog Devices Inc./Maxim Integrated technical specifications, attributes, parameters

Product Attribute	Attribute Value	Product Attribute	Attribute Value
Manufacturer	Maxim Integrated	Operating Temperature	-40°C ~ 125°C
Voltage - Supply, Single/Dual (±)	2.5V ~ 5.5V	Number of Elements	1
Voltage - Input Offset (Max)	5mV @ 5V	Mounting Type	Surface Mount
Type	General Purpose	Hysteresis	4mV
Supplier Device Package	SC-70-6	Current - Quiescent (Max)	55µA
Series	-	Current - Output (Typ)	45mA
Propagation Delay (Max)	228ns (Typ)	Current - Input Bias (Max)	0.08µA @ 5V
Package / Case	6-TSSOP, SC-88, SOT-363	CMRR, PSRR (Typ)	100dB CMRR, 100dB
Package	Bulk	Base Product Number	MAX9030
Output Type	Push-Pull, Output		

Parts with Similar Specifications

The three parts on the right have similar specifications to Analog Devices Inc./Maxim Integrated MAX9030AXT

Product Attribute				
Part Number	MAX9030AXT	MAX9031AUK+T	MAX9030AUT+T	MAX9032AKA
Manufacturer	Analog Devices Inc./Maxim Integrated	Analog Devices Inc./Maxim Integrated	Analog Devices Inc./Maxim Integrated	Analog Devices Inc./Maxim Integrated
Package / Case	6-TSSOP, SC-88, SOT-363	SC-74A, SOT-753	SOT-23-6	SOT-23-8
Current - Quiescent (Max)	55µA	55µA	55µA	55µA
Series	-	-	-	-
Voltage - Supply, Single/Dual (±)	2.5V ~ 5.5V	2.5V ~ 5.5V	2.5V ~ 5.5V	2.5V ~ 5.5V
Output Type	Push-Pull, Output	CMOS, Rail-to-Rail, TTL	CMOS, Rail-to-Rail, TTL	Push-Pull, -, Output
Number of Elements	1	1	1	2
Mounting Type	Surface Mount	Surface Mount	Surface Mount	Surface Mount
Package	Bulk	Tape & Reel (TR)	Tape & Reel (TR)	Bulk
Base Product Number	MAX9030	MAX9031	MAX9030	MAX9032
Voltage - Input Offset (Max)	5mV @ 5V	1mV @ 5V	1mV @ 5V	5mV @ 5V
Current - Input Bias (Max)	0.08µA @ 5V	0.008µA @ 5V	0.008µA @ 5V	0.08µA @ 5V
Propagation Delay (Max)	228ns (Typ)	228ns	228ns	188ns (Typ)
Current - Output (Typ)	45mA	-	-	-
Supplier Device Package	SC-70-6	SOT-23-5	SOT-6	SOT-23-8
Type	General Purpose	General Purpose	General Purpose	General Purpose
CMRR, PSRR (Typ)	100dB CMRR, 100dB	100dB CMRR, 100dB PSRR	100dB CMRR, 100dB PSRR	100dB, 100dB
Hysteresis	4mV	4mV	4mV	4mV
Operating Temperature	-40°C ~ 125°C	-40°C ~ 125°C	-40°C ~ 125°C	-40°C ~ 125°C

Customers Also Interested in

Recommended Products



MAX9027EWT+T
Analog Devices / Maxim Integrated



MAX9030AXT-TG096
Analog Devices / Maxim Integrated



MAX9031AUK+T
Analog Devices Inc./Maxim Integrated
IC COMPARATOR 1 GEN PUR SOT23-5



MAX9030AUT+T
Analog Devices Inc./Maxim Integrated
IC COMPARATOR 1 GEN PUR SOT6









MAX9032AKA
Analog Devices Inc./Maxim Integrated
IC COMPARATOR 2 GEN PUR SOT23-8



MAX9030AXT+T
Analog Devices Inc./Maxim Integrated
IC COMPARATOR 1 GEN PUR SC70-6



MAX9028EBT+T	MAX9030AXT-T	MAX9028EBT+	MAX9030AXT+	MAX902ESD	MAX9031AXK+T
Analog Devices Inc./Maxim Integrated IC COMPARATOR 1 GEN PUR 6WLP	Analog Devices Inc./Maxim Integrated IC COMPARATOR 1 GEN PUR SC70-6	Analog Devices / Maxim Integrated	Analog Devices / Maxim Integrated	Analog Devices Inc./Maxim Integrated IC COMPARATOR 2 W/LATCH 14SOIC	Analog Devices Inc./Maxim Integrated IC COMPARATOR 1 GEN PUR SC70-5
					
MAX9028EBT+T Analog Devices Inc./Maxim Integrated IC COMPARATOR 2 W/LATCH 14SOIC	MAX9031AEUK Analog Devices / Maxim Integrated	MAX902ESD+T Analog Devices Inc./Maxim Integrated IC COMPARATOR 2 W/LATCH 14SOIC	MAX9031AUK Analog Devices / Maxim Integrated	MAX902CSD+T Analog Devices Inc./Maxim Integrated IC COMPARATOR 2 W/LATCH 14SOIC	MAX9027EWT+TG7 Analog Devices / Maxim Integrated

Shipment

Delivery Time

In-stock items can be shipped within 24 hours. Some parts will be arranged for delivery within 1-2 days from the date all items arrive at our warehouse. And Allelco ships order once a day at about 17:00, except Sunday. Once the goods are shipped, the estimated delivery time depends on the shipping methods and Delivery destination. The table below shows are the logistic time for some common countries.

Delivery Cost

> Use your express account for shipment if you have one.

> Use our account for the shipment. Refer to the table below for the approximate charges.

(Different time frame / countries / package size has different price.)

Delivery Method

> Global Common Shipment by DHL / UPS / FedEx / TNT / EMS / SF we support.

> Others more shipping ways, please get in touch with your customer manager.

Common Countries Logistic Time Reference		
Region	Country	Logistic Time(Day)
America	United States	5
	Brazil	7
Europe	Germany	5
	United Kingdom	4
	Italy	5
Oceania	Australia	6
	New Zealand	7
Asia	India	6
	Japan	7
Middle East	Israel	6

DHL & FedEx Shipment Charges Reference	
Shipment charges(KG)	Reference DHL(USD\$)
0.00kg-1.00kg	USD\$60.00
1.00kg-2.00kg	USD\$70.00
2.00kg-3.00kg	USD\$80.00

Note: The above table is for reference only. There may have some data bias for the uncontrollable factors.

Contact us if you have any questions.

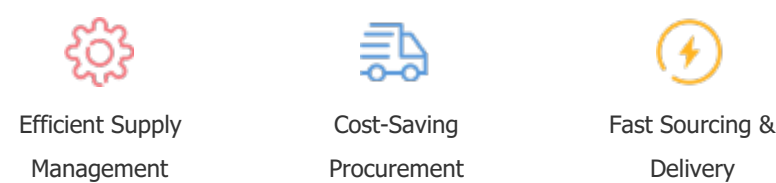
Payment Support

The payment method can be chosen from the methods shown below:

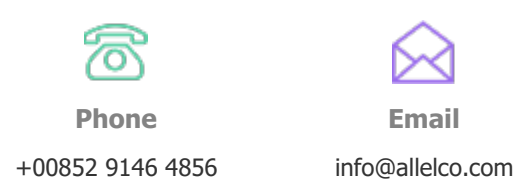
Wire Transfer (T/T, Bank Transfer), Western Union, Credit card, PayPal.



Your Faithful Supply Chain Partner -



Contact us if you have any questions.



Certifications & Memberships



[View More](#)