



## FGH75N60UFTU

Manufacturer Part Number	<b>FGH75N60UFTU</b>
Manufacturer	<b>onsemi</b>
Allelco Part Number	32D-FGH75N60UFTU
ECAD Model	Request Free CAD Models
Parts Description	IGBT 600V 150A 452W TO247
Package	TO-247-3
Data sheet	<b>FGH75N60UF.pdf</b>
RoHs Status	ROHS3 Compliant

ON Semiconductor®

**Get a Quote**

FGH75N60UFTU - onsemi.New Original in Stock. Download Linear Technology FGH75N60UFTU datasheet/specifications on AllelcoElec.com.

Request a quote for FGH75N60UFTU, please send us email: [info@allelco.com](mailto:info@allelco.com)

### Specifications

FGH75N60UFTU Tech Specifications

FGH75N60UFTU - onsemi technical specifications, attributes, parameters

Product Attribute	Attribute Value	Product Attribute	Attribute Value
Manufacturer	onsemi	Package	Tube
Voltage - Collector Emitter Breakdown (Max)	600 V	Operating Temperature	-55°C ~ 150°C (TJ)
Vce(on) (Max) @ Vge, Ic	2.4V @ 15V, 75A	Mounting Type	Through Hole
Test Condition	400V, 75A, 30hm, 15V	Input Type	Standard
Td (on/off) @ 25°C	27ns/128ns	IGBT Type	Field Stop
Switching Energy	3.05mJ (on), 1.35mJ (off)	Gate Charge	250 nC
Supplier Device Package	TO-247-3	Current - Collector Pulsed (Icm)	225 A
Series	-	Current - Collector (Ic) (Max)	150 A
Power - Max	452 W	Base Product Number	FGH75
Package / Case	TO-247-3		

### Parts with Similar Specifications

The three parts on the right have similar specifications to onsemi FGH75N60UFTU

Product Attribute	NO PICTURE			
Part Number	FGH75N60UFTU	FGH75T65SHDT-F155	FGH60T65SQD-F155	FGH60N6S2
Manufacturer	onsemi	onsemi	onsemi	onsemi
Switching Energy	3.05mJ (on), 1.35mJ (off)	3mJ (on), 750μJ (off)	227μJ (on), 100μJ (off)	400μJ (on), 310μJ (off)
Operating Temperature	-55°C ~ 150°C (TJ)	-55°C ~ 175°C (TJ)	-55°C ~ 175°C (TJ)	-55°C ~ 150°C (TJ)
Vce(on) (Max) @ Vge, Ic	2.4V @ 15V, 75A	2.1V @ 15V, 75A	2.1V @ 15V, 60A	2.5V @ 15V, 40A
Package	Tube	Tube	Tube	Tube
Voltage - Collector Emitter Breakdown (Max)	600 V	650 V	650 V	600 V
Package / Case	TO-247-3	TO-247-3	TO-247-3	TO-247-3
Mounting Type	Through Hole	Through Hole	Through Hole	Through Hole
Series	-	-	-	-
Test Condition	400V, 75A, 30hm, 15V	400V, 75A, 30hm, 15V	400V, 15A, 4.70hm, 15V	390V, 40A, 30hm, 15V
Power - Max	452 W	455 W	333 W	625 W
Supplier Device Package	TO-247-3	TO-247-3	TO-247-3	TO-247-3
Current - Collector Pulsed (Icm)	225 A	225 A	240 A	320 A
IGBT Type	Field Stop	Trench Field Stop	Trench Field Stop	-
Td (on/off) @ 25°C	27ns/128ns	28ns/86ns	20.8ns/102ns	18ns/70ns
Input Type	Standard	Standard	Standard	Standard
Base Product Number	FGH75	FGH75	FGH60	FGH60
Current - Collector (Ic) (Max)	150 A	150 A	120 A	75 A
Gate Charge	250 nC	123 nC	79 nC	140 nC

### FGH75N60UFTU Datasheet PDF

Download FGH75N60UFTU pdf datasheets and onsemi documentation for FGH75N60UFTU - onsemi.

#### Datasheets

[FGH75N60UF.pdf](#)

#### Environmental Information

[onsemi RoHS.pdf](#)

#### PCN Design/Specification

[Logo 17/Aug/2017.pdf](#)

[Dimension/Color Change 24/Feb/2021.pdf](#)

## PCN Packaging



Mult Devices 24/Oct/2017.pdf



Packing quantity increase 28/Dec/2020.pdf

## PCN Assembly/Origin



Mult Dev Assembly/DS Chg 6/Jan/2019.pdf

## PCN Obsolescence/ EOL



Mult Dev EOL 29/Jan/2021.pdf

## Customers Also Interested in

### Recommended Products

<p><b>FGH75T65SHDT-F155</b> onsemi IGBT 650V 150A 455W TO-247</p>	<p><b>FGH60T65SQD-F155</b> onsemi IGBT TRENCH/FS 650V 120A TO247-3</p>	<p><b>FGH75T65SHD</b> AMI Semiconductor/onsemi</p>	<p><b>FGH60N6S2</b> onsemi IGBT 600V 75A 625W TO247</p>	<p><b>FGH60T65SHD-F155</b> onsemi IGBT TRENCH/FS 650V 120A TO247</p>	<p><b>FGH60N60UFDTU</b> onsemi IGBT 600V 120A 298W TO247</p>
<p><b>FGH75T65SHDTL4</b> Fairchild Semiconductor INSULATED GATE BIPOLAR TRANSISTO</p>	<p><b>FGH60T65SHD</b> Fairchild (onsemi)</p>	<p><b>FGH75T60UD</b> Fairchild (onsemi)</p>	<p><b>FGH75T65SHDT</b> AMI Semiconductor/onsemi</p>	<p><b>FGH75T65SQD</b> Fairchild (onsemi)</p>	<p><b>FGH75T65SHD-F155</b> onsemi IGBT TRENCH/FS 650V 150A TO247</p>
<p><b>FGH75T65SHDTL4</b> onsemi IGBT FIELD STOP 650V 150A TO247</p>	<p><b>FGH75T65SQD-F155</b> onsemi IGBT 650V 150A 375W TO247</p>	<p><b>FGH75N60SFTU</b> Fairchild Semiconductor N-CHANNEL IGBT</p>	<p><b>FGH60N60UFD</b> Fairchild (onsemi)</p>	<p><b>FGH75N60UF</b> Fairchild (onsemi)</p>	<p><b>FGH75T65SHDTL4</b> onsemi FS3 T TO247 75A 650V 4WL</p>

## Shipment

### Delivery Time

In-stock items can be shipped within 24 hours. Some parts will be arranged for delivery within 1-2 days from the date all items arrive at our warehouse. And Alleco ships order once a day at about 17:00, except Sunday. Once the goods are shipped, the estimated delivery time depends on the shipping methods and Delivery destination. The table below shows are the logistic time for some common countries.

### Delivery Cost

- > Use your express account for shipment if you have one.
  - > Use our account for the shipment. Refer to the table below for the approximate charges.
- (Different time frame / countries / package size has different price.)

### Delivery Method

- > Global Common Shipment by DHL / UPS / FedEx / TNT / EMS / SF we support.
- > Others more shipping ways, please get in touch with your customer manager.

Common Countries Logistic Time Reference		
Region	Country	Logistic Time(Day)
America	United States	5
	Brazil	7
Europe	Germany	5
	United Kingdom	4
	Italy	5
Oceania	Australia	6
	New Zealand	7
Asia	India	6
	Japan	7
Middle East	Israel	6

DHL & FedEx Shipment Charges Reference	
Shipment charges(KG)	Reference DHL(USD\$)
0.00kg-1.00kg	USD\$60.00
1.00kg-2.00kg	USD\$70.00
2.00kg-3.00kg	USD\$80.00

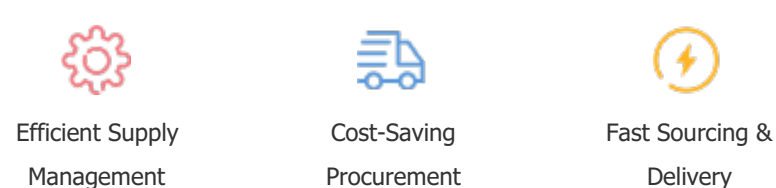
**Note:** The above table is for reference only. There may have some data bias for the uncontrollable factors.  
Contact us if you have any questions.

## Payment Support

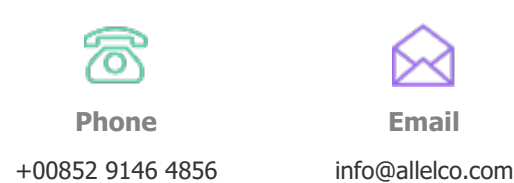
The payment method can be chosen from the methods shown below:  
Wire Transfer (T/T, Bank Transfer), Western Union, Credit card, PayPal.



## Your Faithful Supply Chain Partner -



Contact us if you have any questions.



## Certifications & Memberships



[View More](#)

