



Image may be representation.  
See specifications for product details.



## AD797BRZ

Manufacturer Part Number	<b>AD797BRZ</b>
Manufacturer	<b>Analog Devices, Inc.</b>
Allelco Part Number	32D-AD797BRZ
ECAD Model	PCB Symbol, Footprint & 3D Mode
Parts Description	IC OPAMP GP 1 CIRCUIT 8SOIC
Package	8-SOIC (0.154", 3.90mm Width)
Data sheet	<b>AD797.pdf</b>
RoHs Status	<b>ROHS3 Compliant</b>

**Get a Quote**

AD797BRZ - Analog Devices Inc..New Original in Stock. Download Linear Technology AD797BRZ datasheet/specifications on AllelcoElec.com.  
Request a quote for AD797BRZ, please send us email: [info@allelco.com](mailto:info@allelco.com)

### Specifications

AD797BRZ Tech Specifications  
AD797BRZ - Analog Devices Inc. technical specifications, attributes, parameters

Product Attribute	Attribute Value	Product Attribute	Attribute Value
Manufacturer	Analog Devices, Inc.	Operating Temperature	-40°C ~ 85°C
Voltage - Supply Span (Min)	10 V	Number of Circuits	1
Voltage - Supply Span (Max)	30 V	Mounting Type	Surface Mount
Voltage - Input Offset	10 µV	Gain Bandwidth Product	110 MHz
Supplier Device Package	8-SOIC	Current - Supply	8.2mA
Slew Rate	20V/µs	Current - Output / Channel	50 mA
Series	-	Current - Input Bias	250 nA
Package / Case	8-SOIC (0.154", 3.90mm Width)	Base Product Number	AD797
Package	Tube	Amplifier Type	General Purpose
Output Type	-	-3db Bandwidth	8 MHz

### Parts with Similar Specifications

The three parts on the right have similar specifications to Analog Devices Inc. AD797BRZ

Product Attribute				
Part Number	AD797BRZ	AD797ANZ	AD797BRZ-REEL7	AD797BRZ-REEL
Manufacturer	Analog Devices Inc.	Analog Devices Inc.	Analog Devices Inc.	Analog Devices Inc.
Base Product Number	AD797	AD797	AD797	AD797
-3db Bandwidth	8 MHz	8 MHz	8 MHz	8 MHz
Package / Case	8-SOIC (0.154", 3.90mm Width)	8-DIP (0.300", 7.62mm)	8-SOIC (0.154", 3.90mm Width)	8-SOIC (0.154", 3.90mm Width)
Mounting Type	Surface Mount	Through Hole	Surface Mount	Surface Mount
Supplier Device Package	8-SOIC	8-PDIP	8-SOIC	8-SOIC
Current - Input Bias	250 nA	250 nA	250 nA	250 nA
Voltage - Supply Span (Max)	30 V	30 V	30 V	30 V
Voltage - Input Offset	10 µV	25 µV	10 µV	10 µV
Series	-	-	-	-
Output Type	-	-	-	-
Gain Bandwidth Product	110 MHz	110 MHz	110 MHz	110 MHz
Amplifier Type	General Purpose	General Purpose	General Purpose	General Purpose
Number of Circuits	1	1	1	1
Slew Rate	20V/µs	20V/µs	20V/µs	20V/µs
Current - Supply	8.2mA	8.2mA	8.2mA	8.2mA
Operating Temperature	-40°C ~ 85°C	-40°C ~ 85°C	-40°C ~ 85°C	-40°C ~ 85°C
Current - Output / Channel	50 mA	50 mA	50 mA	50 mA
Package	Tube	Tube	Tape & Reel (TR)	Tape & Reel (TR)
Voltage - Supply Span (Min)	10 V	10 V	10 V	10 V

### AD797BRZ Datasheet PDF

Download AD797BRZ pdf datasheets and Analog Devices Inc. documentation for AD797BRZ - Analog Devices Inc..

#### Datasheets

[AD797.pdf](#)

#### Other Related Documents

[Can You Really Get ppm Accuracies from Op Amps?.pdf](#)

### Customers Also Interested in

## Recommended Products



### AD797ANZ

Analog Devices Inc.  
IC OPAMP GP 1 CIRCUIT 8DIP

### AD797JN

ADI (Analog Devices, Inc.)



### AD7980ACPZ

ADI (Analog Devices, Inc.)

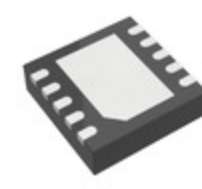


### AD7980ARMZRL7

Analog Devices Inc.  
IC ADC 16BIT SAR 10MSOP

### AD797B

ADI (Analog Devices, Inc.)



### AD7980ACPZ-RL7

Analog Devices Inc.  
IC ADC 16BIT SAR 10LFCSP



### AD797BRZ-REEL7

Analog Devices Inc.  
IC OPAMP GP 1 CIRCUIT 8SOIC



### AD797BRZ-REEL

Analog Devices Inc.  
IC OPAMP GP 1 CIRCUIT 8SOIC



### AD797ARZ-REEL7

Analog Devices Inc.  
IC OPAMP GP 1 CIRCUIT 8SOIC



### AD7980ARMZ

Analog Devices Inc.  
IC ADC 16BIT SAR 10MSOP



### AD797ARZ

Analog Devices Inc.  
IC OPAMP GP 1 CIRCUIT 8SOIC



### AD797BR

Analog Devices Inc.  
IC OPAMP GP 1 CIRCUIT 8SOIC



### AD797AR

Analog Devices Inc.  
IC OPAMP GP 1 CIRCUIT 8SOIC



### AD7980ARMZ(C5X)

ADI (Analog Devices, Inc.)



### AD797AN

Analog Devices Inc.  
IC OPAMP GP 110MHZ ULDIST 8DIP



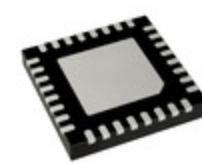
### AD797BNZ

ADI (Analog Devices, Inc.)



### AD7980ARMZ-RL7

ADI (Analog Devices, Inc.)



### AD7961BCPZ

Analog Devices Inc.  
IC ADC 16BIT SAR 32LFCSP

## Shipment

### Delivery Time

In-stock items can be shipped within 24 hours. Some parts will be arranged for delivery within 1-2 days from the date all items arrive at our warehouse. And Allelco ships order once a day at about 17:00, except Sunday. Once the goods are shipped, the estimated delivery time depends on the shipping methods and Delivery destination. The table below shows are the logistic time for some common countries.

### Delivery Cost

> Use your express account for shipment if you have one.

> Use our account for the shipment. Refer to the table below for the approximate charges.

(Different time frame / countries / package size has different price.)

### Delivery Method

> Global Common Shipment by DHL / UPS / FedEx / TNT / EMS / SF we support.

> Others more shipping ways, please get in touch with your customer manager.

Common Countries Logistic Time Reference

Region	Country	Logistic Time(Day)
America	United States	5
	Brazil	7
Europe	Germany	5
	United Kingdom	4
	Italy	5
Oceania	Australia	6
	New Zealand	7
Asia	India	6
	Japan	7
Middle East	Israel	6

DHL & FedEx Shipment Charges Reference

Shipment charges(KG)	Reference DHL(USD\$)
0.00kg-1.00kg	USD\$60.00
1.00kg-2.00kg	USD\$70.00
2.00kg-3.00kg	USD\$80.00

Note: The above table is for reference only. There may have some data bias for the uncontrollable factors.

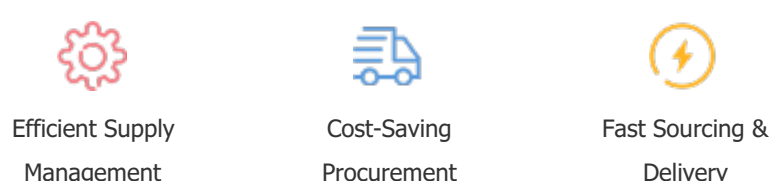
Contact us if you have any questions.

## Payment Support

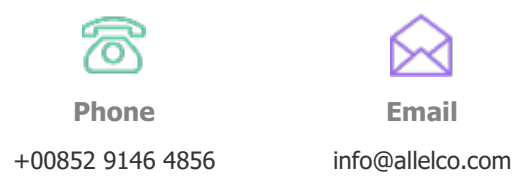
The payment method can be chosen from the methods shown below:  
Wire Transfer (T/T, Bank Transfer), Western Union, Credit card, PayPal.



## Your Faithful Supply Chain Partner -



Contact us if you have any questions.



Phone  
+00852 9146 4856

Email  
info@allelco.com

## Certifications & Memberships



View More



WWW.ALLELCOELEC.COM

## Contact us

Address: Flat/Rm C 13/F Harvard Commercial Building 105-111 Thomson Road, Wan Chai, Hong Kong

Phone: +00852 9146 4856

Fax: +00852 3010 8510

Email: info@Allelco.com

Copyright © 2012-2023 AllelcoElec.com. All rights reserved.