

Image may be representation.
See specifications for product details.



MAX823MEUK

Manufacturer Part Number	MAX823MEUK
Manufacturer	Maxim Integrated
Allelco Part Number	32D-MAX823MEUK
ECAD Model	Request Free CAD Models
Parts Description	IC SUPERVISOR MPU
Package	SC-74A, SOT-753
Data sheet	MAX823MEUK.pdf

Get a Quote

MAX823MEUK - Analog Devices Inc./Maxim Integrated.New Original in Stock. Download Linear Technology MAX823MEUK datasheet/specifications on AllelcoElec.com.
Request a quote for MAX823MEUK, please send us email: info@allelco.com

Specifications

MAX823MEUK Tech Specifications
MAX823MEUK - Analog Devices Inc./Maxim Integrated technical specifications, attributes, parameters

Product Attribute	Attribute Value	Product Attribute	Attribute Value
Manufacturer	Maxim Integrated	Package / Case	SC-74A, SOT-753
Voltage - Threshold	4.38V	Package	Bulk
Type	Simple Reset/Power-On Reset	Output	Push-Pull, Totem Pole
Supplier Device Package	SOT-23-5	Operating Temperature	-40°C ~ 125°C (TA)
Series	-	Number of Voltages Monitored	1
Reset Timeout	140ms Minimum	Mounting Type	Surface Mount
Reset	Active Low	Base Product Number	MAX823

Parts with Similar Specifications

The three parts on the right have similar specifications to Analog Devices Inc./Maxim Integrated MAX823MEUK

Product Attribute				
Part Number	MAX823MEUK	MAX823REUK	MAX823SEUK	MAX823REUK+T
Manufacturer	Analog Devices Inc./Maxim Integrated	Analog Devices Inc./Maxim Integrated	Analog Devices Inc./Maxim Integrated	Analog Devices Inc./Maxim Integrated
Base Product Number	MAX823	MAX823	MAX823	MAX823
Supplier Device Package	SOT-23-5	SOT-23-5	SC-70-5	SC-70-5
Number of Voltages Monitored	1	1	1	1
Package / Case	SC-74A, SOT-753	SC-74A, SOT-753	5-TSSOP, SC-70-5, SOT-353	5-TSSOP, SC-70-5, SOT-353
Package	Bulk	Bulk	Tape & Reel (TR)	Tape & Reel (TR)
Mounting Type	Surface Mount	Surface Mount	Surface Mount	Surface Mount
Reset	Active Low	Active Low	Active Low	Active Low
Type	Simple Reset/Power-On Reset	Simple Reset/Power-On Reset	Simple Reset/Power-On Reset	Watchdog Circuit
Voltage - Threshold	4.38V	2.63V	2.93V	2.63V
Series	-	-	-	Automotive
Reset Timeout	140ms Minimum	140ms Minimum	140ms Minimum	140ms Minimum
Operating Temperature	-40°C ~ 125°C (TA)	-40°C ~ 125°C (TA)	-40°C ~ 85°C (TA)	-40°C ~ 85°C (TA)
Output	Push-Pull, Totem Pole	Push-Pull, Totem Pole	Push-Pull, Totem Pole	Push-Pull, Totem Pole

Customers Also Interested in

Recommended Products

MAX823REUK Analog Devices Inc./Maxim Integrated IC SUPERVISOR MPU	MAX823SEUK Analog Devices Inc./Maxim Integrated IC SUPERVISOR MPU	MAX823REUK+T Analog Devices Inc./Maxim Integrated IC SUPERVISOR MPU SC70-5	MAX823LEUK+T Analog Devices Inc./Maxim Integrated IC SUPERVISOR MPU SC70-5	MAX823MEUK-T Analog Devices Inc./Maxim Integrated IC SUPERVISOR MPU	MAX823MEUK+T Analog Devices Inc./Maxim Integrated IC SUPERVISOR 1 CHANNEL SOT23-5
MAX823SEUK Analog Devices Inc./Maxim Integrated IC SUPERVISOR MPU	MAX823LEUK-T Analog Devices Inc./Maxim Integrated IC SUPERVISOR MPU	MAX822SUS-T Analog Devices Inc./Maxim Integrated IC SUPERVISOR MPU VOLT MONITOR	MAX822TUS+T Analog Devices Inc./Maxim Integrated IC MONITOR VOLT MPU SOT143-4	MAX823SEUK-T Analog Devices Inc./Maxim Integrated IC SUPERVISOR 1 CHANNEL SOT23-5	MAX823SEUK+T Analog Devices Inc./Maxim Integrated IC SUPERVISOR 1 CHANNEL SOT23-5
MAX823LEUK+T Analog Devices Inc./Maxim Integrated IC SUPERVISOR 1 CHANNEL SOT23-5	MAX822TUS-T Analog Devices / Maxim Integrated	MAX823REUK+T Analog Devices Inc./Maxim Integrated IC SUPERVISOR 1 CHANNEL SOT23-5	MAX823REUK-T Analog Devices Inc./Maxim Integrated IC SUPERVISOR MPU	MAX822SUS+T Analog Devices Inc./Maxim Integrated IC SUPERVISOR 1 CHANNEL SOT143-4	MAX823LEUK Analog Devices Inc./Maxim Integrated IC SUPERVISOR MPU

Shipment

Delivery Time

In-stock items can be shipped within 24 hours. Some parts will be arranged for delivery within 1-2 days from the date all items arrive at our warehouse. And Allelco ships order once a day at about 17:00, except Sunday. Once the goods are shipped, the estimated delivery time depends on the shipping methods and Delivery destination. The table below shows are the logistic time for some common countries.

Delivery Cost

> Use your express account for shipment if you have one.

> Use our account for the shipment. Refer to the table below for the approximate charges.

(Different time frame / countries / package size has different price.)

Delivery Method

> Global Common Shipment by DHL / UPS / FedEx / TNT / EMS / SF we support.

> Others more shipping ways, please get in touch with your customer manager.

Common Countries Logistic Time Reference		
Region	Country	Logistic Time(Day)
America	United States	5
	Brazil	7
Europe	Germany	5
	United Kingdom	4
	Italy	5
Oceania	Australia	6
	New Zealand	7
Asia	India	6
	Japan	7
Middle East	Israel	6

DHL & FedEx Shipment Charges Reference	
Shipment charges(KG)	Reference DHL(USD\$)
0.00kg-1.00kg	USD\$60.00
1.00kg-2.00kg	USD\$70.00
2.00kg-3.00kg	USD\$80.00

Note: The above table is for reference only. There may have some data bias for the uncontrollable factors.

Contact us if you have any questions.

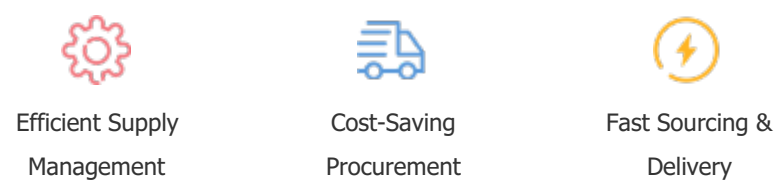
Payment Support

The payment method can be chosen from the methods shown below:

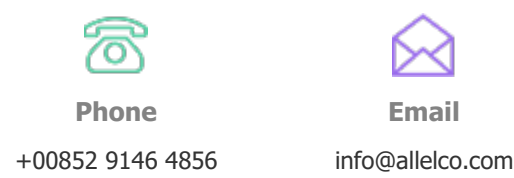
Wire Transfer (T/T, Bank Transfer), Western Union, Credit card, PayPal.



Your Faithful Supply Chain Partner -



Contact us if you have any questions.



Certifications & Memberships



[View More](#)