



Image may be representation.
See specifications for product details.



HMC1031MS8ETR

Manufacturer Part Number	HMC1031MS8ETR
Manufacturer	Analog Devices, Inc.
Allelco Part Number	32D-HMC1031MS8ETR
ECAD Model	PCB Symbol, Footprint & 3D Model
Parts Description	IC CLOCK GEN INT-N PLL 8-MS8E
Package	8-TSSOP, 8-MSOP (0.118", 3.00mm Width)
Data sheet	HMC1031.pdf
RoHs Status	ROHS3 Compliant

Get a Quote

HMC1031MS8ETR - Analog Devices Inc..New Original in Stock. Download Linear Technology HMC1031MS8ETR datasheet/specifications on AllelcoElec.com.
Request a quote for HMC1031MS8ETR, please send us email: info@allelco.com

Specifications

HMC1031MS8ETR Tech Specifications

HMC1031MS8ETR - Analog Devices Inc. technical specifications, attributes, parameters

Product Attribute	Attribute Value	Product Attribute	Attribute Value
Manufacturer	Analog Devices, Inc.	Operating Temperature	-40°C ~ 85°C
Voltage - Supply	2.7V ~ 3.5V	Number of Circuits	1
Supplier Device Package	8-MSOP	Mounting Type	Surface Mount
Series	-	Input	Clock
Ratio - Input:Output	1:1	Frequency - Max	500MHz
Package / Case	8-TSSOP, 8-MSOP (0.118", 3.00mm Width)	Divider/Multiplier	Yes/No
Package	Tape & Reel (TR)	Differential - Input:Output	No/No
PLL	Yes	Base Product Number	HMC1031
Output	-		

Parts with Similar Specifications

The three parts on the right have similar specifications to Analog Devices Inc. HMC1031MS8ETR

Product Attribute				
Part Number	HMC1031MS8ETR	HMC1033LP6GE	HMC1035LP6GE	HMC1034LP6GETR
Manufacturer	Analog Devices Inc.	Analog Devices Inc.	Analog Devices Inc.	Analog Devices Inc.
Frequency - Max	500MHz	550MHz	2.5GHz	3GHz
Package	Tape & Reel (TR)	Strip	Strip	Tape & Reel (TR)
Operating Temperature	-40°C ~ 85°C	-40°C ~ 85°C	-40°C ~ 85°C	-40°C ~ 85°C
PLL	Yes	Yes	Yes	Yes
Number of Circuits	1	1	1	1
Differential - Input:Output	No/No	No/Yes	No/Yes	No/Yes
Base Product Number	HMC1031	HMC1033	HMC1035	HMC1034
Output	-	LVDS, LVPECL	LVDS, LVPECL	Clock
Supplier Device Package	8-MSOP	40-SMT (6x6)	40-SMT (6x6)	40-SMT (6x6)
Voltage - Supply	2.7V ~ 3.5V	3.15V ~ 3.5V	3.15V ~ 3.5V	3V ~ 5.2V
Ratio - Input:Output	1:1	1:2	1:2	1:2
Input	Clock	Clock	Clock	Clock
Mounting Type	Surface Mount	Surface Mount	Surface Mount	Surface Mount
Series	-	-	-	-
Divider/Multiplier	Yes/No	Yes/No	Yes/No	Yes/No
Package / Case	8-TSSOP, 8-MSOP (0.118", 3.00mm Width)	40-VFQFN Exposed Pad	40-VFQFN Exposed Pad	40-VFQFN Exposed Pad

HMC1031MS8ETR Datasheet PDF

Download HMC1031MS8ETR pdf datasheets and Analog Devices Inc. documentation for HMC1031MS8ETR - Analog Devices Inc..

Datasheets

[HMC1031.pdf](#)

PCN Other

[ADG, HMC 18-May-2022.pdf](#)

PCN Obsolescence/ EOL

[Mult Dev EOL 22/Mar/2022.pdf](#)

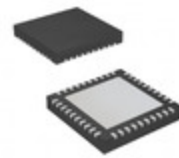
Customers Also Interested in

Recommended Products



HMC1027BG

Analog Devices Inc.
IC CROSSPOINT SW EQUALIZER
168BGA



HMC1033LP6GE

Analog Devices Inc.
IC CLOCK GEN 1:1 550MHZ 40-SMT



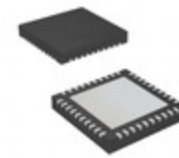
HMC1021Z-RC

Honeywell Aerospace
SENSOR MR WHEAT BRIDGE 8PIN



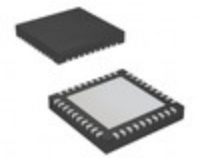
HMC1030LP5ETR

Analog Devices Inc.
IC RF DETECT 0HZ-3.9GHZ 32QFN



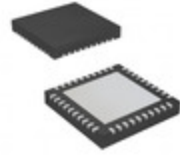
HMC1035LP6GE

Analog Devices Inc.
IC CLOCK GEN 1:1 2.5GHZ 40-SMT



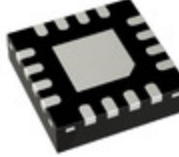
HMC1034LP6GETR

Analog Devices Inc.
IC CLOCK GEN 1:1 3GHZ 40-SMT



HMC1034LP6GE

Analog Devices Inc.
IC CLOCK GEN 1:1 3GHZ 40-SMT



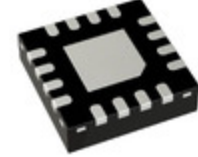
HMC1040LP3CETR

Analog Devices Inc.
IC AMP VSAT 24GHZ-43.5GHZ
16QFN



HMC1022-TR

Honeywell Aerospace
SENSOR MR WHEAT BRDG 16SOIC



HMC1040LP3CE

Analog Devices Inc.
IC AMP VSAT 24GHZ-43.5GHZ
16QFN



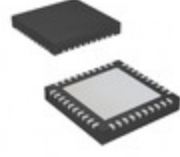
HMC1021S-TR

Honeywell Aerospace
SENSOR MR WHEAT BRDG 8SOIC



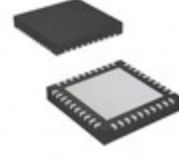
HMC1031MS8E

Analog Devices Inc.
IC CLOCK GEN INT-N PLL 8-MS8E



HMC1035LP6GETR

Analog Devices Inc.
IC CLOCK GEN 1:1 2.5GHZ 40-SMT



HMC1033LP6GETR

Analog Devices Inc.
IC CLOCK GEN 1:1 550MHZ 40-SMT



HMC1030LP5E

Analog Devices Inc.
IC RF DETECT 0HZ-3.9GHZ 32QFN



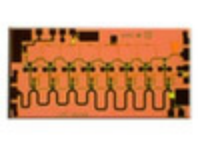
HMC1023LP5E

Analog Devices Inc.
RF FILTER LO PASS 100MHZ
32VQFN



HMC1029

Analog Devices Inc.
IC RF AMP GP 29-37GHZ DIE 1=2PC



HMC1022

Analog Devices Inc.
IC RF AMP VSAT 0HZ-48GHZ DIE

Shipment

Delivery Time

In-stock items can be shipped within 24 hours. Some parts will be arranged for delivery within 1-2 days from the date all items arrive at our warehouse. And Allelco ships order once a day at about 17:00, except Sunday. Once the goods are shipped, the estimated delivery time depends on the shipping methods and Delivery destination. The table below shows are the logistic time for some common countries.

Delivery Cost

> Use your express account for shipment if you have one.

> Use our account for the shipment. Refer to the table below for the approximate charges.

(Different time frame / countries / package size has different price.)

Delivery Method

> Global Common Shipment by DHL / UPS / FedEx / TNT / EMS / SF we support.

> Others more shipping ways, please get in touch with your customer manager.

Common Countries Logistic Time Reference

Region	Country	Logistic Time(Day)
America	United States	5
	Brazil	7
Europe	Germany	5
	United Kingdom	4
	Italy	5
Oceania	Australia	6
	New Zealand	7
Asia	India	6
	Japan	7
Middle East	Israel	6

DHL & FedEx Shipment Charges Reference

Shipment charges(KG)	Reference DHL(USD\$)
0.00kg-1.00kg	USD\$60.00
1.00kg-2.00kg	USD\$70.00
2.00kg-3.00kg	USD\$80.00

Note: The above table is for reference only. There may have some data bias for the uncontrollable factors.
Contact us if you have any questions.

Payment Support

The payment method can be chosen from the methods shown below:

Wire Transfer (T/T, Bank Transfer), Western Union, Credit card,
PayPal.



Your Faithful Supply Chain Partner -



Efficient Supply
Management



Cost-Saving
Procurement



Fast Sourcing &
Delivery

Contact us if you have any questions.



Phone

+00852 9146 4856



Email

info@allelco.com

Certifications & Memberships



View More