



Image may be representation.  
See specifications for product details.



## DS2465P+T

Manufacturer Part Number	<b>DS2465P+T</b>
Manufacturer	<b>Maxim Integrated</b>
Allelco Part Number	32D-DS2465P+T
ECAD Model	Request Free CAD Models
Parts Description	IC I2C TO 1WIRE BRIDGE 6TSOC
Package	6-SMD, J-Lead
Data sheet	<a href="#">DS2465 Abridged Datasheet.pdf</a> <a href="#">MAXREFDES143# Quick Start Guide.pdf</a>
RoHs Status	ROHS3 Compliant

**Get a Quote**

DS2465P+T - Analog Devices Inc./Maxim Integrated. New Original in Stock. Download Linear Technology DS2465P+T datasheet/specifications on AllelcoElec.com.  
Request a quote for DS2465P+T, please send us email: [info@allelco.com](mailto:info@allelco.com)

### Specifications

DS2465P+T Tech Specifications  
DS2465P+T - Analog Devices Inc./Maxim Integrated technical specifications, attributes, parameters

Product Attribute	Attribute Value	Product Attribute	Attribute Value
Manufacturer	Maxim Integrated	Package	Tape & Reel (TR)
Voltage - Supply	2.97V ~ 3.63V	Operating Temperature	-40°C ~ 85°C
Supplier Device Package	6-TSOC	Interface	I <sup>2</sup> C
Standards	-	Function	Controller
Series	-	Current - Supply	750µA
Protocol	1-Wire®	Base Product Number	DS2465
Package / Case	6-SMD, J-Lead		

### Parts with Similar Specifications

The three parts on the right have similar specifications to Analog Devices Inc./Maxim Integrated DS2465P+T

Product Attribute				
Part Number	DS2465P+T	DS2465P+	DS2476Q+U	DS2460S+
Manufacturer	Analog Devices Inc./Maxim Integrated	Analog Devices Inc./Maxim Integrated	Analog Devices Inc./Maxim Integrated	Analog Devices Inc./Maxim Integrated
Series	-	-	DeepCover®	-
Current - Supply	750µA	750µA	-	-
Supplier Device Package	6-TSOC	6-TSOC	6-TDFN (3x3)	8-SOIC
Base Product Number	DS2465	DS2465	DS2476	DS2460
Package / Case	6-SMD, J-Lead	6-SMD, J-Lead	6-WDFN Exposed Pad	8-SOIC (0.154", 3.90mm Width)
Interface	I <sup>2</sup> C	I <sup>2</sup> C	-	-
Function	Controller	Controller	-	-
Standards	-	-	-	-
Protocol	1-Wire®	1-Wire®	-	-
Package	Tape & Reel (TR)	Tube	Strip	Tube
Voltage - Supply	2.97V ~ 3.63V	2.97V ~ 3.63V	-	2.7V ~ 5.5V
Operating Temperature	-40°C ~ 85°C	-40°C ~ 85°C	-	-40°C ~ 85°C (TA)

### DS2465P+T Datasheet PDF

Download DS2465P+T pdf datasheets and Analog Devices Inc./Maxim Integrated documentation for DS2465P+T - Analog Devices Inc./Maxim Integrated.

#### Datasheets

[DS2465 Abridged Datasheet.pdf](#)

#### Environmental Information

[Maxim Integrated RoHS Cert.pdf](#)

[Material Declaration DS2465P+T.pdf](#)

#### Other Related Documents

[Hardware Security ICs Offer Large Security Returns.pdf](#)

#### Application Notes

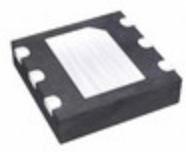
[Implement Heightened Security with a SHA-256 Maste.pdf](#)

#### HTML Datasheet

[MAXREFDES143# Quick Start Guide.pdf](#)

### Customers Also Interested in

#### Recommended Products

**DS2476Q+U**

Analog Devices Inc./Maxim Integrated  
IC SECURITY COMPANION CHIP 6TDFN

**DS2460S+**

Analog Devices Inc./Maxim Integrated  
IC EEPROM 896BIT I2C 8SOIC

**DS2460S+T&R**

Analog Devices / Maxim Integrated

**DS2480B**

Analog Devices Inc./Maxim Integrated  
IC DRIVER 1/0 8SOIC

**DS2460S+T**

Analog Devices / Maxim Integrated

**DS2460S+T&R**

Analog Devices Inc./Maxim Integrated  
IC EEPROM 896BIT I2C 8SOIC

**DS2470**

Analog Devices / Maxim Integrated

**DS2480B+T&R**

Analog Devices Inc./Maxim Integrated  
IC DRIVER 1/0 8SOIC

**DS2465P+TR**

Analog Devices / Maxim Integrated

**DS2465P+**

Analog Devices Inc./Maxim Integrated  
IC I2C TO 1WIRE BRIDGE 6TSOC

**DS2480B+**

Analog Devices Inc./Maxim Integrated  
IC DRIVER 1/0 8SOIC

**DS2465+**

Analog Devices / Maxim Integrated

**DS2460S-450-00+1T**

Analog Devices / Maxim Integrated

**DS2480B+TR**

Analog Devices / Maxim Integrated

**DS2480B+T**

Analog Devices / Maxim Integrated

**DS2460S+TR**

Analog Devices / Maxim Integrated

**DS2460S**

Analog Devices / Maxim Integrated

**DS2460S-W0B+1T**

Analog Devices / Maxim Integrated

## Shipment

### Delivery Time

In-stock items can be shipped within 24 hours. Some parts will be arranged for delivery within 1-2 days from the date all items arrive at our warehouse. And Allelco ships order once a day at about 17:00, except Sunday. Once the goods are shipped, the estimated delivery time depends on the shipping methods and Delivery destination. The table below shows are the logistic time for some common countries.

### Delivery Cost

> Use your express account for shipment if you have one.

> Use our account for the shipment. Refer to the table below for the approximate charges.

(Different time frame / countries / package size has different price.)

### Delivery Method

> Global Common Shipment by DHL / UPS / FedEx / TNT / EMS / SF we support.

> Others more shipping ways, please get in touch with your customer manager.

Common Countries Logistic Time Reference		
Region	Country	Logistic Time(Day)
America	United States	5
	Brazil	7
Europe	Germany	5
	United Kingdom	4
	Italy	5
Oceania	Australia	6
	New Zealand	7
Asia	India	6
	Japan	7
Middle East	Israel	6

DHL & FedEx Shipment Charges Reference	
Shipment charges(KG)	Reference DHL(USD\$)
0.00kg-1.00kg	USD\$60.00
1.00kg-2.00kg	USD\$70.00
2.00kg-3.00kg	USD\$80.00

Note: The above table is for reference only. There may have some data bias for the uncontrollable factors.

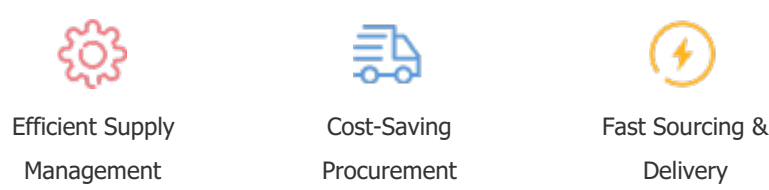
Contact us if you have any questions.

## Payment Support

The payment method can be chosen from the methods shown below:  
Wire Transfer (T/T, Bank Transfer), Western Union, Credit card, PayPal.



## Your Faithful Supply Chain Partner -



Contact us if you have any questions.



## Certifications & Memberships



[View More](#)