

Image may be representation.  
See specifications for product details.



## MAX221ECAE

Manufacturer Part Number	<b>MAX221ECAE</b>
Manufacturer	<b>Maxim Integrated</b>
Allelco Part Number	32D-MAX221ECAE
ECAD Model	Request Free CAD Models
Parts Description	IC TRANSCEIVER FULL 1/1 16SSOP
Package	16-SSOP (0.209', 5.30mm Width)
Data sheet	<b>MAX220-49 Datasheet.pdf</b>

**Get a Quote**

MAX221ECAE - Analog Devices Inc./Maxim Integrated. New Original in Stock. Download Linear Technology MAX221ECAE datasheet/specifications on AllelcoElec.com. Request a quote for MAX221ECAE, please send us email: [info@allelco.com](mailto:info@allelco.com)

### Specifications

MAX221ECAE Tech Specifications  
MAX221ECAE - Analog Devices Inc./Maxim Integrated technical specifications, attributes, parameters

Product Attribute	Attribute Value	Product Attribute	Attribute Value
Manufacturer	Maxim Integrated	Package	Tube
Voltage - Supply	4.5V ~ 5.5V	Operating Temperature	-40°C ~ 85°C
Type	Transceiver	Number of Drivers/Receivers	1/1
Supplier Device Package	16-SSOP	Mounting Type	Surface Mount
Series	-	Duplex	Full
Receiver Hysteresis	500 mV	Data Rate	250kbps
Protocol	RS232	Base Product Number	MAX221
Package / Case	16-SSOP (0.209', 5.30mm Width)		

### Parts with Similar Specifications

The three parts on the right have similar specifications to Analog Devices Inc./Maxim Integrated MAX221ECAE

Product Attribute				
Part Number	MAX221ECAE	MAX221ECUE+T	MAX221EAE+T	MAX221ECAE+T
Manufacturer	Analog Devices Inc./Maxim Integrated	Analog Devices Inc./Maxim Integrated	Analog Devices Inc./Maxim Integrated	Analog Devices Inc./Maxim Integrated
Data Rate	250kbps	250kbps	250kbps	250kbps
Supplier Device Package	16-SSOP	16-TSSOP	16-SSOP	16-SSOP
Operating Temperature	-40°C ~ 85°C	-40°C ~ 85°C	-40°C ~ 85°C	-40°C ~ 85°C
Package / Case	16-SSOP (0.209', 5.30mm Width)	16-TSSOP (0.173", 4.40mm Width)	16-SSOP (0.209', 5.30mm Width)	16-SSOP (0.209', 5.30mm Width)
Mounting Type	Surface Mount	Surface Mount	Surface Mount	Surface Mount
Protocol	RS232	RS232	RS232	RS232
Duplex	Full	Full	Full	Full
Number of Drivers/Receivers	1/1	1/1	1/1	1/1
Receiver Hysteresis	500 mV	500 mV	500 mV	500 mV
Type	Transceiver	Transceiver	Transceiver	Transceiver
Voltage - Supply	4.5V ~ 5.5V	4.5V ~ 5.5V	4.5V ~ 5.5V	4.5V ~ 5.5V
Series	-	-	-	-
Base Product Number	MAX221	MAX221	MAX221	MAX221
Package	Tube	Tape & Reel (TR)	Tape & Reel (TR)	Tape & Reel (TR)

### MAX221ECAE Datasheet PDF

Download MAX221ECAE pdf datasheets and Analog Devices Inc./Maxim Integrated documentation for MAX221ECAE - Analog Devices Inc./Maxim Integrated.

#### Datasheets

[MAX220-49 Datasheet.pdf](#)

#### Environmental Information

[Maxim Integrated REACH.pdf](#)

[Maxim Integrated RoHS Cert.pdf](#)

#### Part Numbering Guide

[Part Numbering System.pdf](#)

#### PCN Obsolescence/ EOL

[Cylindrical Battery Holders.pdf](#)

### Customers Also Interested in

#### Recommended Products



**MAX221ECUE+T**

Analog Devices Inc./Maxim Integrated  
IC TRANSCEIVER FULL 1/1 16TSSOP



**MAX221EAE+T**

Analog Devices Inc./Maxim Integrated  
IC TRANSCEIVER FULL 1/1 16SSOP



**MAX221ECAE+T**

Analog Devices Inc./Maxim Integrated  
IC TRANSCEIVER FULL 1/1 16SSOP



**MAX221ECUE+**

Analog Devices Inc./Maxim Integrated  
IC TRANSCEIVER FULL 1/1 16TSSOP



**MAX221CAE+T**

Analog Devices Inc./Maxim Integrated  
IC TRANSCEIVER FULL 1/1 16SSOP

**MAX221ECUE**

Analog Devices / Maxim Integrated



**MAX221EEAE**

Analog Devices Inc./Maxim Integrated  
IC TRANSCEIVER FULL 1/1 16SSOP



**MAX220EWE**

Analog Devices Inc./Maxim Integrated  
IC TRANSCEIVER FULL 2/2 16SOIC



**MAX221EEAE+**

Analog Devices Inc./Maxim Integrated  
IC TRANSCEIVER FULL 1/1 16SSOP



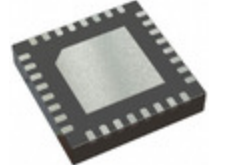
**MAX221EAE**

Analog Devices Inc./Maxim Integrated  
IC TRANSCEIVER FULL 1/1 16SSOP



**MAX221ECAE+**

Analog Devices Inc./Maxim Integrated  
IC TRANSCEIVER FULL 1/1 16SSOP



**MAX22190ATJ+**

Analog Devices Inc./Maxim Integrated  
OCTAL INDUSTRIAL DIGITAL INPUT W



**MAX221CAE**

Analog Devices Inc./Maxim Integrated  
IC TRANSCEIVER FULL 1/1 16SSOP



**MAX221CAE-T**

Analog Devices Inc./Maxim Integrated  
RS-232 TRANSCEIVER



**MAX221CWI**

Analog Devices / Maxim Integrated



**MAX221CUE**

Analog Devices Inc./Maxim Integrated  
IC TRANSCEIVER FULL 1/1 16TSSOP



**MAX221EEAE+T**

Analog Devices Inc./Maxim Integrated  
IC TRANSCEIVER FULL 1/1 16SSOP



**MAX221CUE+T**

Analog Devices Inc./Maxim Integrated  
IC TRANSCEIVER FULL 1/1 16TSSOP

## Shipment

### Delivery Time

In-stock items can be shipped within 24 hours. Some parts will be arranged for delivery within 1-2 days from the date all items arrive at our warehouse. And Alleco ships order once a day at about 17:00, except Sunday. Once the goods are shipped, the estimated delivery time depends on the shipping methods and Delivery destination. The table below shows are the logistic time for some common countries.

### Delivery Cost

- > Use your express account for shipment if you have one.
  - > Use our account for the shipment. Refer to the table below for the approximate charges.
- (Different time frame / countries / package size has different price.)

### Delivery Method

- > Global Common Shipment by DHL / UPS / FedEx / TNT / EMS / SF we support.
- > Others more shipping ways, please get in touch with your customer manager.

Common Countries Logistic Time Reference		
Region	Country	Logistic Time(Day)
America	United States	5
	Brazil	7
Europe	Germany	5
	United Kingdom	4
	Italy	5
Oceania	Australia	6
	New Zealand	7
Asia	India	6
	Japan	7
Middle East	Israel	6

DHL & FedEx Shipment Charges Reference	
Shipment charges(KG)	Reference DHL(USD\$)
0.00kg-1.00kg	USD\$60.00
1.00kg-2.00kg	USD\$70.00
2.00kg-3.00kg	USD\$80.00

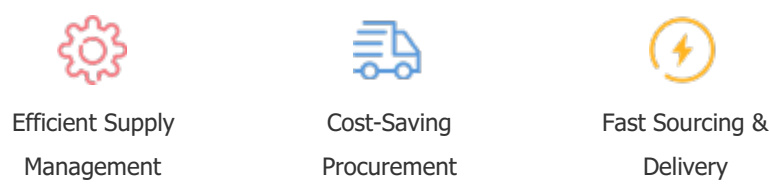
Note: The above table is for reference only. There may have some data bias for the uncontrollable factors.  
Contact us if you have any questions.

### Payment Support

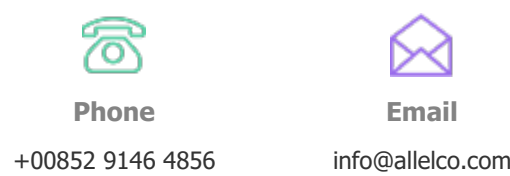
The payment method can be chosen from the methods shown below:  
Wire Transfer (T/T, Bank Transfer), Western Union, Credit card, PayPal.



### Your Faithful Supply Chain Partner -



Contact us if you have any questions.



### Certifications & Memberships



[View More](#)