

Image may be representation.
See specifications for product details.



ADSP-BF707BBCZ-4

Manufacturer Part Number	ADSP-BF707BBCZ-4
Manufacturer	Analog Devices, Inc.
Allelco Part Number	32D-ADSP-BF707BBCZ-4
ECAD Model	PCB Symbol, Footprint & 3D Mode
Parts Description	IC DSP LP 1024KB L2SR 184BGA
Package	184-LFBGA, CSPBGA
Data sheet	Cylindrical Battery Holders.pdf
RoHs Status	ROHS3 Compliant

Get a Quote

ADSP-BF707BBCZ-4 - Analog Devices Inc..New Original in Stock. Download Linear Technology ADSP-BF707BBCZ-4 datasheet/specifications on AllelcoElec.com.
Request a quote for ADSP-BF707BBCZ-4, please send us email: info@allelco.com

Specifications

ADSP-BF707BBCZ-4 Tech Specifications
ADSP-BF707BBCZ-4 - Analog Devices Inc. technical specifications, attributes, parameters

Product Attribute	Attribute Value	Product Attribute	Attribute Value
Manufacturer	Analog Devices, Inc.	Operating Temperature	-40°C ~ 85°C (TA)
Voltage - I/O	1.8V, 3.3V	On-Chip RAM	1MB
Voltage - Core	1.10V	Non-Volatile Memory	ROM (512kB)
Type	Blackfin+	Mounting Type	Surface Mount
Supplier Device Package	184-CSPBGA (12x12)	Interface	CAN, DSPI, EBI/EMI, I ² C, PPI, QSPI, SD/SDIO, SPI, SPORT, UART/USART, USB OTG
Series	Blackfin®	Clock Rate	400MHz
Package / Case	184-LFBGA, CSPBGA	Base Product Number	ADSP-BF707
Package	Tray		

Parts with Similar Specifications

The three parts on the right have similar specifications to Analog Devices Inc. ADSP-BF707BBCZ-4

Product Attribute				
Part Number	ADSP-BF707BBCZ-4	ADSP-CM408CSWZ-AF	ADSP-SC583KBCZ-4A	ADSP-CM403CSWZ-CF
Manufacturer	Analog Devices Inc.	Analog Devices Inc.	Analog Devices Inc.	ADI (Analog Devices, Inc.)
Series	Blackfin®	-	SHARC®	-
Operating Temperature	-40°C ~ 85°C (TA)	-40°C ~ 105°C (TA)	0°C ~ 70°C (TA)	-40°C ~ 105°C (TA)
Clock Rate	400MHz	240MHz	450MHz	240MHz
Base Product Number	ADSP-BF707	ADSP-CM408	ADSP-SC583	-
Non-Volatile Memory	ROM (512kB)	FLASH (2MB)	ROM (512kB)	FLASH (2 MB)
Voltage - Core	1.10V	1.20V	1.10V	1.20V
Voltage - I/O	1.8V, 3.3V	3.30V	3.30V	3.30V
Supplier Device Package	184-CSPBGA (12x12)	176-LQFP-EP (24x24)	349-CSPBGA (19x19)	120-LQFP-EP (14x14)
Interface	CAN, DSPI, EBI/EMI, I ² C, PPI, QSPI, SD/SDIO, SPI, SPORT, UART/USART, USB OTG	CAN, Ethernet, I ² C, SPI, SPORT, UART/USART, USB	CAN, EBI/EMI, Ethernet, DAI, I ² C, MMC/SD/SDIO, SPI, SPORT, UART/USART, USB OTG	CAN, I ² C, SPI, SPORT, UART/USART
Type	Blackfin+	Floating Point	Floating Point	Floating Point
Mounting Type	Surface Mount	Surface Mount	Surface Mount	Surface Mount
Package / Case	184-LFBGA, CSPBGA	176-LQFP Exposed Pad	349-LFBGA, CSPBGA	120-LQFP Exposed Pad
Package	Tray	Tray	Tray	-
On-Chip RAM	1MB	384kB	384kB	384kB

ADSP-BF707BBCZ-4 Datasheet PDF

Download ADSP-BF707BBCZ-4 pdf datasheets and Analog Devices Inc. documentation for ADSP-BF707BBCZ-4 - Analog Devices Inc..

Datasheets

[Cylindrical Battery Holders.pdf](#)

PCN Design/Specification

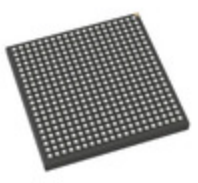
[ADSP-BF70x Data Sheet Chg 25/Sep/2015.pdf](#)

[ADSP-BF70y Datasheet Update 19/Jul/2017.pdf](#)

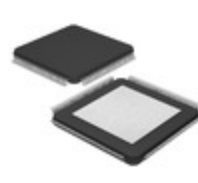
Customers Also Interested in

Recommended Products

ADSP-CM408CSWZ-AF	ADSP-SC583KBCZ-4A	ADSP-CM403CSWZ-CF	ADSP-BF707BBCZ-3	ADSP-CM408CSWZ-BF	ADSP-CM409CBCZ-AF
Analog Devices Inc. IC ARM CORTEX M4 FLASH 176LQFP	Analog Devices Inc. ARM, 2X 3MB SHARC, SINGLE DDR, L	ADI (Analog Devices, Inc.) IC ARM CORTEX M4 FLASH 120LQFP	Analog Devices Inc. IC DSP LP 1024KB L2SR 184BGA	Analog Devices Inc. IC ARM CORTEX M4 FLASH 176LQFP	Analog Devices Inc. IC ARM CORTEX M4 FLASH 212CSBGA



ADSP-SC572BBCZ-4
Analog Devices Inc.
ARM, 1X SHARC, DDR, BGA PKG



ADSP-CM408BSWZ-AF
Analog Devices Inc.
IC ARM CORTEX M4 FLASH 176LQFP



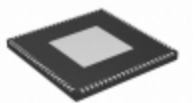
ADSP-BF706CCPZ-4
ADI (Analog Devices, Inc.)



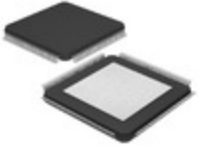
ADSP-BF704BCPZ-4
Analog Devices Inc.
IC DSP LP 512KB L2SR 88LFCSP



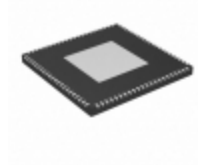
ADSP-BF702KCPZ-4
Analog Devices Inc.
IC DSP LP 256KB L2SR 88LFCSP



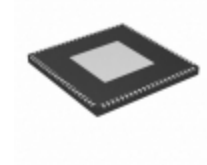
ADSP-BF706KCPZ-3
Analog Devices Inc.
IC DSP LP 1024KB L2SR 88LFCSP



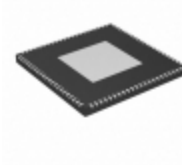
ADSP-CM407CSWZ-BF
Analog Devices Inc.
IC ARM CORTEX M4 FLASH 176LQFP



ADSP-BF702BCPZ-4
Analog Devices Inc.
IC DSP LP 256KB L2SR 88LFCSP



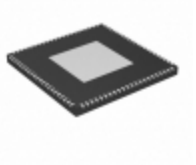
ADSP-BF706KCPZ-4
Analog Devices Inc.
IC DSP LP 1024KB L2SR 88LFCSP



ADSP-BF706BCPZ-4
Analog Devices Inc.
IC DSP LP 1024KB L2SR 88LFCSP



ADSP-SC584KBCZ-5A
Analog Devices Inc.
ARM, 2XSHARC, DDR, LPC PACKAGE



ADSP-BF702BCPZ-3
Analog Devices Inc.
IC DSP LP 256KB L2SR 88LFCSP

Shipment

Delivery Time

In-stock items can be shipped within 24 hours. Some parts will be arranged for delivery within 1-2 days from the date all items arrive at our warehouse. And Allelco ships order once a day at about 17:00, except Sunday. Once the goods are shipped, the estimated delivery time depends on the shipping methods and Delivery destination. The table below shows are the logistic time for some common countries.

Delivery Cost

- > Use your express account for shipment if you have one.
- > Use our account for the shipment. Refer to the table below for the approximate charges.
(Different time frame / countries / package size has different price.)

Delivery Method

- > Global Common Shipment by DHL / UPS / FedEx / TNT / EMS / SF we support.
- > Others more shipping ways, please get in touch with your customer manager.

Common Countries Logistic Time Reference		
Region	Country	Logistic Time(Day)
America	United States	5
	Brazil	7
Europe	Germany	5
	United Kingdom	4
	Italy	5
Oceania	Australia	6
	New Zealand	7
Asia	India	6
	Japan	7
Middle East	Israel	6

DHL & FedEx Shipment Charges Reference	
Shipment charges(KG)	Reference DHL(USD\$)
0.00kg-1.00kg	USD\$60.00
1.00kg-2.00kg	USD\$70.00
2.00kg-3.00kg	USD\$80.00

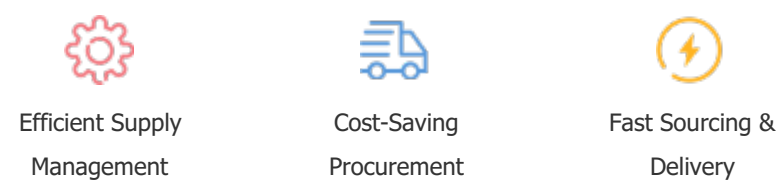
Note: The above table is for reference only. There may have some data bias for the uncontrollable factors.
Contact us if you have any questions.

Payment Support

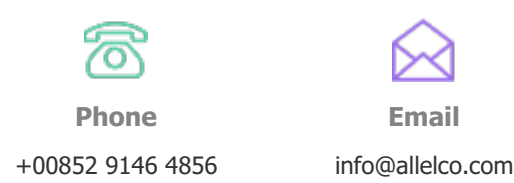
The payment method can be chosen from the methods shown below:
Wire Transfer (T/T, Bank Transfer), Western Union, Credit card, PayPal.



Your Faithful Supply Chain Partner -



Contact us if you have any questions.



Certifications & Memberships



[View More](#)



Contact us

Address: Flat/Rm C 13/F Harvard Commercial Building 105-111 Thomson Road, Wan Chai, Hong Kong
Phone: +00852 9146 4856
Fax: +00852 3010 8510
Email: info@Allelco.com