



VS-90EPS12L-M3

Manufacturer Part Number	VS-90EPS12L-M3
Manufacturer	Vishay General Semiconductor – Diodes Division
Allelco Part Number	32D-VS-90EPS12L-M3
ECAD Model	PCB Symbol, Footprint & 3D Mode
Parts Description	DIODE GEN PURP 1.2KV 90A TO247AD
Package	TO-247-2
Data sheet	VS-90xPS(08,12)L-M3.pdf
RoHs Status	ROHS3 Compliant



Get a Quote

VS-90EPS12L-M3 - Vishay General Semiconductor - Diodes Division. New Original in Stock. Download Linear Technology VS-90EPS12L-M3 datasheet/specifications on AllelcoElec.com.

Request a quote for VS-90EPS12L-M3, please send us email: info@allelco.com

Specifications

VS-90EPS12L-M3 Tech Specifications

VS-90EPS12L-M3 - Vishay General Semiconductor - Diodes Division technical specifications, attributes, parameters

Product Attribute	Attribute Value	Product Attribute	Attribute Value
Manufacturer	Vishay General Semiconductor – Diodes Division	Package	Tube
Voltage - Forward (Vf) (Max) @ If	1.2 V @ 90 A	Operating Temperature - Junction	-40°C ~ 150°C
Voltage - DC Reverse (Vr) (Max)	1200 V	Mounting Type	Through Hole
Technology	Standard	Current - Reverse Leakage @ Vr	100 µA @ 1200 V
Supplier Device Package	TO-247AD	Current - Average Rectified (Io)	90A
Speed	Standard Recovery >500ns, > 200mA (Io)	Capacitance @ Vr, F	-
Series	-	Base Product Number	90EPS12
Package / Case	TO-247-2		

Parts with Similar Specifications

The three parts on the right have similar specifications to Vishay General Semiconductor - Diodes Division VS-90EPS12L-M3

Product Attribute	NO PICTURE			
Part Number	VS-90EPS12L-M3	VS-8EWX06FN-M3	VS-EPU3006L-N3	VS-8EWS16SLHM3
Manufacturer	Vishay General Semiconductor - Diodes Division	Vishay General Semiconductor - Diodes Division	Vishay General Semiconductor - Diodes Division	Vishay General Semiconductor - Diodes Division
Series	-	FRED Pt®	FRED Pt®	Automotive, AEC-Q101
Package	Tube	Tube	Tube	Tape & Reel (TR)
Voltage - Forward (Vf) (Max) @ If	1.2 V @ 90 A	3 V @ 8 A	2 V @ 30 A	1.1 V @ 8 A
Package / Case	TO-247-2	TO-252-3, DPak (2 Leads + Tab), SC-63	TO-247-2	TO-252-3, DPak (2 Leads + Tab), SC-63
Base Product Number	90EPS12	8EWX06	EPU3006	8EWS16
Voltage - DC Reverse (Vr) (Max)	1200 V	600 V	600 V	1600 V
Mounting Type	Through Hole	Surface Mount	Through Hole	Surface Mount
Technology	Standard	Standard	Standard	Standard
Speed	Standard Recovery >500ns, > 200mA (Io)	Fast Recovery =< 500ns, > 200mA (Io)	Fast Recovery =< 500ns, > 200mA (Io)	Standard Recovery >500ns, > 200mA (Io)
Capacitance @ Vr, F	-	-	-	-
Operating Temperature - Junction	-40°C ~ 150°C	-65°C ~ 175°C	-55°C ~ 175°C	-40°C ~ 150°C
Supplier Device Package	TO-247AD	TO-252, (D-Pak)	TO-247AD	D-PAK (TO-252AA)
Current - Reverse Leakage @ Vr	100 µA @ 1200 V	50 µA @ 600 V	30 µA @ 600 V	50 µA @ 1600 V
Current - Average Rectified (Io)	90A	8A	30A	8A

VS-90EPS12L-M3 Datasheet PDF

Download VS-90EPS12L-M3 pdf datasheets and Vishay General Semiconductor - Diodes Division documentation for VS-90EPS12L-M3 - Vishay General Semiconductor - Diodes Division.

Datasheets

VS-90xPS(08,12)L-M3.pdf

PCN Design/Specification

Mult Dev Mold Chg 13/Sep/2019.pdf

Customers Also Interested in

Recommended Products

VS-8EWX06FN-M3	VS-EPU3006L-N3	VS-8EWS16SLHM3	VS-8TQ100STRLPBF	VS-C4PU3006L-N3	VS-EPU6006-N3
Vishay General Semiconductor - Diodes Division DIODE GEN PURP 600V 8A TO252	Vishay General Semiconductor - Diodes Division DIODE GEN PURP 600V 30A TO247AD	Vishay General Semiconductor - Diodes Division DIODE GEN PURP 1.6KV 8A DPAK	Vishay General Semiconductor - Diodes Division DIODE SCHOTTKY 100V 8A TO263AB	Vishay General Semiconductor - Diodes Division DIODE GEN PURP 600V 15A TO247AD	Vishay General Semiconductor - Diodes Division DIODE GP 600V 60A TO247AC

**VS-8EWS16STRRPBF**Vishay General Semiconductor - Diodes Division
DIODE GEN PURP 1.6KV 8A D-PAK**VS-8TQ100PBF**Vishay General Semiconductor - Diodes Division
DIODE SCHOTTKY 100V 8A TO220AC**VS-E4PH6006L-N3**Vishay General Semiconductor - Diodes Division
DIODE GP 600V 60A TO247AC**VS-8EWS16STRR-M3**Vishay General Semiconductor - Diodes Division
DIODE GEN PURP 1.6KV 8A D-PAK**VS-EPU3006-N3**Vishay General Semiconductor - Diodes Division
DIODE GP 600V 30A TO247AC**VS-8EWS16STRPBF**Vishay General Semiconductor - Diodes Division
DIODE GEN PURP 1.6KV 8A D-PAK**VS-APU6006-N3**Vishay General Semiconductor - Diodes Division
DIODE GEN PURP 600V 30A TO247AC**VS-E5PH6006L-N3**Vishay General Semiconductor - Diodes Division
DIODE GEN PURP 600V 60A TO247AD**VS-8EWX06FNTR-M3**Vishay General Semiconductor - Diodes Division
DIODE GEN PURP 600V 8A DPAK**VS-E4TU2006FP-N3**Vishay General Semiconductor - Diodes Division
DIODE GP 600V 20A TO220-2FP**VS-8S2TH06FP**

Electro-Films (EFI) / Vishay

**VS-8S2TH06I-M**Vishay General Semiconductor - Diodes Division
DIODE GEN PURP 600V 8A TO220AC

Shipment

Delivery Time

In-stock items can be shipped within 24 hours. Some parts will be arranged for delivery within 1-2 days from the date all items arrive at our warehouse. And Allelco ships order once a day at about 17:00, except Sunday. Once the goods are shipped, the estimated delivery time depends on the shipping methods and Delivery destination. The table below shows are the logistic time for some common countries.

Delivery Cost

> Use your express account for shipment if you have one.

> Use our account for the shipment. Refer to the table below for the approximate charges.

(Different time frame / countries / package size has different price.)

Delivery Method

> Global Common Shipment by DHL / UPS / FedEx / TNT / EMS / SF we support.

> Others more shipping ways, please get in touch with your customer manager.

Common Countries Logistic Time Reference		
Region	Country	Logistic Time(Day)
America	United States	5
	Brazil	7
Europe	Germany	5
	United Kingdom	4
	Italy	5
Oceania	Australia	6
	New Zealand	7
Asia	India	6
	Japan	7
Middle East	Israel	6

DHL & FedEx Shipment Charges Reference	
Shipment charges(KG)	Reference DHL(USD\$)
0.00kg-1.00kg	USD\$60.00
1.00kg-2.00kg	USD\$70.00
2.00kg-3.00kg	USD\$80.00

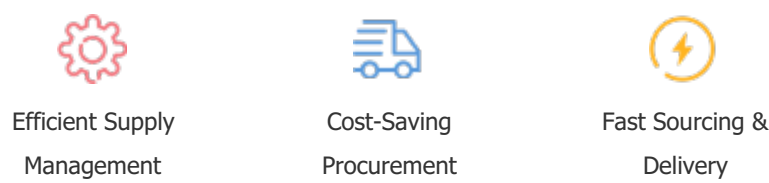
Note: The above table is for reference only. There may have some data bias for the uncontrollable factors.
Contact us if you have any questions.

Payment Support

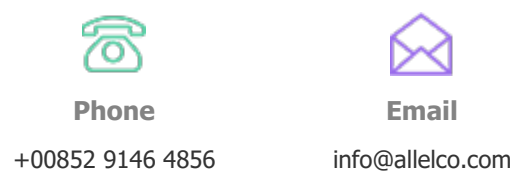
The payment method can be chosen from the methods shown below:
Wire Transfer (T/T, Bank Transfer), Western Union, Credit card, PayPal.



Your Faithful Supply Chain Partner -



Contact us if you have any questions.



Certifications & Memberships



[View More](#)



Contact us

Address: Flat/Rm C 13/F Harvard Commercial Building 105-111 Thomson Road, Wan Chai, Hong Kong

Phone: +00852 9146 4856

Fax: +00852 3010 8510

Email: info@Allelco.com

Copyright © 2012-2023 AllelcoElec.com. All rights reserved.