



Image may be representation.  
See specifications for product details.



## MAX30102EFD+

Manufacturer Part Number	<b>MAX30102EFD+</b>
Manufacturer	<b>Maxim Integrated</b>
Allelco Part Number	32D-MAX30102EFD+
ECAD Model	Request Free CAD Models
Parts Description	IC SENSOR OXIMETER/HEARTRATE
Package	
Data sheet	<b>Cylindrical Battery Holders.pdf</b>
RoHs Status	<b>ROHS3 Compliant</b>

**Get a Quote**

MAX30102EFD+ - Analog Devices Inc./Maxim Integrated.New Original in Stock. Download Linear Technology MAX30102EFD+ datasheet/specifications on AllelcoElec.com. Request a quote for MAX30102EFD+, please send us email: [info@allelco.com](mailto:info@allelco.com)

### Specifications

MAX30102EFD+ Tech Specifications  
MAX30102EFD+ - Analog Devices Inc./Maxim Integrated technical specifications, attributes, parameters

Product Attribute	Attribute Value	Product Attribute	Attribute Value
Manufacturer	Maxim Integrated	Output Type	I <sup>2</sup> C
Series	-	Operating Temperature	-40°C ~ 85°C (TJ)
Sensor Type	Oximeter/Heart Rate	Base Product Number	MAX30102
Package	Tray		

### Parts with Similar Specifications

The three parts on the right have similar specifications to Analog Devices Inc./Maxim Integrated MAX30102EFD+

Product Attribute				
Part Number	MAX30102EFD+	MAX30100EFD+	MAX30100EFD+T	MAX30102EFD+T
Manufacturer	Analog Devices Inc./Maxim Integrated	Analog Devices Inc./Maxim Integrated	Analog Devices Inc./Maxim Integrated	Analog Devices Inc./Maxim Integrated
Sensor Type	Oximeter/Heart Rate	Oximeter/Heart Rate	Oximeter/Heart Rate	Oximeter/Heart Rate
Base Product Number	MAX30102	MAX301	MAX301	MAX30102
Series	-	-	-	-
Output Type	I <sup>2</sup> C	-	-	I <sup>2</sup> C
Package	Tray	Tray	Tape & Reel (TR)	Tape & Reel (TR)
Operating Temperature	-40°C ~ 85°C (TJ)	-	-	-40°C ~ 85°C (TA)

### MAX30102EFD+ Datasheet PDF

Download MAX30102EFD+ pdf datasheets and Analog Devices Inc./Maxim Integrated documentation for MAX30102EFD+ - Analog Devices Inc./Maxim Integrated.

#### Datasheets

[Cylindrical Battery Holders.pdf](#)

#### Environmental Information

[Maxim Integrated REACH.pdf](#)

[Maxim Integrated RoHS Cert.pdf](#)

#### PCN Obsolescence/ EOL

[Cylindrical Battery Holders.pdf](#)

#### Application Notes

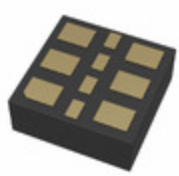
[Signal-to-Noise Ratio as a Quantitative Measure for.pdf](#)

[Understanding Penetration Depth vs. Wavelength for.pdf](#)

### Customers Also Interested in

#### Recommended Products

<b>MAX301CSE</b> Analog Devices Inc./Maxim Integrated IC SWITCH SPST-NOX2 350HM 16SOIC	<b>MAX30100EFD</b> Analog Devices / Maxim Integrated	<b>MAX301CSE+T</b> Analog Devices Inc./Maxim Integrated IC SWITCH SPST-NOX2 350HM 16SOIC	<b>MAX301ESE</b> Analog Devices Inc./Maxim Integrated IC SWITCH SPST-NOX2 350HM 16SOIC	<b>MAX30100EFD+</b> Analog Devices Inc./Maxim Integrated IC SENSOR OXIMETER/HEARTRATE	<b>MAX3013EUP+T</b> Analog Devices Inc./Maxim Integrated IC TRANSLATOR BIDIR 20TSSOP
<b>MAX3004EUP+</b> Analog Devices Inc./Maxim Integrated IC TRANSLATOR UNIDIR 20TSSOP	<b>MAX30100EFD+T</b> Analog Devices Inc./Maxim Integrated IC SENSOR OXIMETER/HEARTRATE	<b>MAX301CPE</b> Analog Devices Inc./Maxim Integrated IC SWITCH SPST-NOX2 350HM 16DIP	<b>MAX30034CUA</b> Analog Devices / Maxim Integrated	<b>MAX3008EUP+T</b> Analog Devices Inc./Maxim Integrated IC TRANSLATOR UNIDIR 20TSSOP	<b>MAX3007EBP-T</b> Analog Devices / Maxim Integrated

**MAX30208CLB+T**Analog Devices Inc./Maxim Integrated  
IC TEMP SENSOR**MAX30208CLB+**Analog Devices Inc./Maxim Integrated  
IC TEMP SENSOR**MAX30102EFD+T**Analog Devices Inc./Maxim Integrated  
INTEGRATED OPTICAL SENSOR**MAX30101EFD+**Analog Devices Inc./Maxim Integrated  
INTEGRATED OPTICAL SENSOR**MAX30102EFD**

Analog Devices / Maxim Integrated

**MAX30101EFD+T**Analog Devices Inc./Maxim Integrated  
INTEGRATED OPTICAL SENSOR

## Shipment

### Delivery Time

In-stock items can be shipped within 24 hours. Some parts will be arranged for delivery within 1-2 days from the date all items arrive at our warehouse. And Allelco ships order once a day at about 17:00, except Sunday. Once the goods are shipped, the estimated delivery time depends on the shipping methods and Delivery destination. The table below shows are the logistic time for some common countries.

### Delivery Cost

> Use your express account for shipment if you have one.

> Use our account for the shipment. Refer to the table below for the approximate charges.

(Different time frame / countries / package size has different price.)

### Delivery Method

> Global Common Shipment by DHL / UPS / FedEx / TNT / EMS / SF we support.

> Others more shipping ways, please get in touch with your customer manager.

**Common Countries Logistic Time Reference**

Region	Country	Logistic Time(Day)
America	United States	5
	Brazil	7
Europe	Germany	5
	United Kingdom	4
	Italy	5
Oceania	Australia	6
	New Zealand	7
Asia	India	6
	Japan	7
Middle East	Israel	6

**DHL & FedEx Shipment Charges Reference**

Shipment charges(KG)	Reference DHL(USD\$)
0.00kg-1.00kg	USD\$60.00
1.00kg-2.00kg	USD\$70.00
2.00kg-3.00kg	USD\$80.00

Note: The above table is for reference only. There may have some data bias for the uncontrollable factors.  
Contact us if you have any questions.

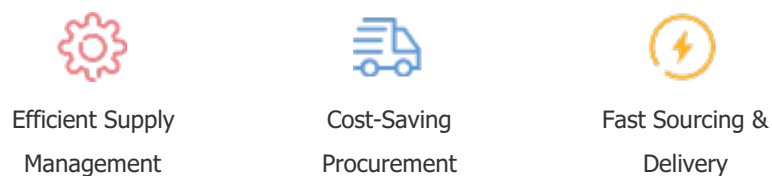
### Payment Support

The payment method can be chosen from the methods shown below:

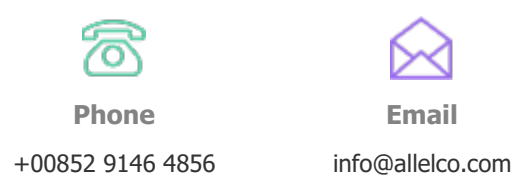
Wire Transfer (T/T, Bank Transfer), Western Union, Credit card, PayPal.



### Your Faithful Supply Chain Partner -



Contact us if you have any questions.



### Certifications & Memberships



[View More](#)



### Contact us

Address: Flat/Rm C 13/F Harvard Commercial Building 105-111 Thomson Road, Wan Chai, Hong Kong

Phone: +00852 9146 4856

Fax: +00852 3010 8510

Email: info@Allelco.com

Copyright © 2012-2023 AllelcoElec.com. All rights reserved.