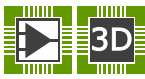




FCH077N65F-F085

Manufacturer Part Number	FCH077N65F-F085
Manufacturer	Fairchild (onsemi)
Allelco Part Number	32D-FCH077N65F-F085
ECAD Model	 PCB Symbol, Footprint & 3D Model
Parts Description	MOSFET N-CH 650V 54A TO247-3
Package	TO-247-3
Data sheet	FCH077N65F-F085.pdf





Get a Quote

FCH077N65F-F085 - Fairchild Semiconductor. New Original in Stock. Download Linear Technology FCH077N65F-F085 datasheet/specifications on AllelcoElec.com.
Request a quote for FCH077N65F-F085, please send us email: info@allelco.com





Specifications

FCH077N65F-F085 Tech Specifications
FCH077N65F-F085 - Fairchild Semiconductor technical specifications, attributes, parameters

Product Attribute	Attribute Value	Product Attribute	Attribute Value
Manufacturer	Fairchild (onsemi)	Operating Temperature	-55°C ~ 150°C (TJ)
Vgs(th) (Max) @ Id	5V @ 250µA	Mounting Type	Through Hole
Vgs (Max)	±20V	Input Capacitance (Ciss) (Max) @ Vds	7162 pF @ 25 V
Technology	MOSFET (Metal Oxide)	Gate Charge (Qg) (Max) @ Vgs	164 nC @ 10 V
Supplier Device Package	TO-247	FET Type	N-Channel
Series	Automotive, AEC-Q101, SuperFET® II	FET Feature	-
Rds On (Max) @ Id, Vgs	77mOhm @ 27A, 10V	Drive Voltage (Max Rds On, Min Rds On)	10V
Power Dissipation (Max)	481W (Tc)	Drain to Source Voltage (Vdss)	650 V
Package / Case	TO-247-3	Current - Continuous Drain (Id) @ 25°C	54A (Tc)
Package	Bulk		

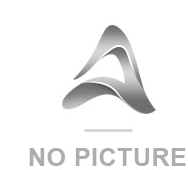
Parts with Similar Specifications

The three parts on the right have similar specifications to Fairchild Semiconductor FCH077N65F-F085

Product Attribute	 NO PICTURE			
Part Number	FCH077N65F-F085	FCH099N65S3-F155	FCH072N60	FCH072N60
Manufacturer	Fairchild Semiconductor	onsemi	onsemi	Fairchild Semiconductor
Operating Temperature	-55°C ~ 150°C (TJ)	-55°C ~ 150°C (TJ)	-55°C ~ 150°C (TJ)	-55°C ~ 150°C (TJ)
Rds On (Max) @ Id, Vgs	77mOhm @ 27A, 10V	99mOhm @ 15A, 10V	72mOhm @ 26A, 10V	72mOhm @ 26A, 10V
Vgs (Max)	±20V	±30V	±20V	±20V
Mounting Type	Through Hole	Through Hole	Through Hole	Through Hole
Series	Automotive, AEC-Q101, SuperFET® II	SuperFET® III	SuperFET® II	SuperFET® II
Drain to Source Voltage (Vdss)	650 V	650 V	600 V	600 V
Technology	MOSFET (Metal Oxide)	MOSFET (Metal Oxide)	MOSFET (Metal Oxide)	MOSFET (Metal Oxide)
Drive Voltage (Max Rds On, Min Rds On)	10V	10V	10V	10V
Input Capacitance (Ciss) (Max) @ Vds	7162 pF @ 25 V	2480 pF @ 400 V	5890 pF @ 380 V	5890 pF @ 380 V
FET Type	N-Channel	N-Channel	N-Channel	N-Channel
Current - Continuous Drain (Id) @ 25°C	54A (Tc)	30A (Tc)	52A (Tc)	52A (Tc)
Power Dissipation (Max)	481W (Tc)	227W (Tc)	481W (Tc)	481W (Tc)
Package / Case	TO-247-3	TO-247-3	TO-247-3	TO-247-3
Vgs(th) (Max) @ Id	5V @ 250µA	4.5V @ 3mA	3.5V @ 250µA	3.5V @ 250µA
Supplier Device Package	TO-247	TO-247-3	TO-247-3	TO-247-3
FET Feature	-	-	-	-
Gate Charge (Qg) (Max) @ Vgs	164 nC @ 10 V	61 nC @ 10 V	125 nC @ 10 V	125 nC @ 10 V
Package	Bulk	Tube	Tube	Bulk

Customers Also Interested in

Recommended Products



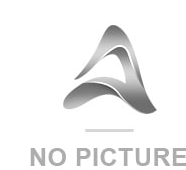
FCH08A10
NIEC



FCH06A10
NIEC



FCH08A15



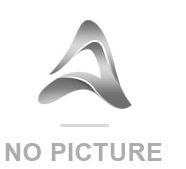
FCH08A06
NIEC



FCH099N65S3-F155
onsemi
MOSFET N-CH 650V 30A TO247-3



FCH077N65F
Fairchild (onsemi)



FCH072N60 onsemi MOSFET N-CH 600V 52A TO247-3	FCH06A09 NIEC	FCH072N60 Fairchild Semiconductor POWER FIELD-EFFECT TRANSISTOR, 5	FCH070N60E onsemi MOSFET N-CH 600V 52A TO247	FCH072N60F-F085 onsemi MOSFET N-CH 600V 52A TO247-3	FCH085N80-F155 Fairchild Semiconductor MOSFET N-CH 800V 46A TO247
FCH099N60E onsemi MOSFET N-CH 600V 37A TO247-3	FCH067N65S3-F155 Fairchild Semiconductor POWER FIELD-EFFECT TRANSISTOR, N	FCH077N65F-F085 onsemi MOSFET N-CH 650V 54A TO247-3	FCH085N80-F155 onsemi MOSFET N-CH 800V 46A TO247	FCH104N60 onsemi MOSFET N-CH 600V 37A TO247-3	FCH072N60F onsemi MOSFET N-CH 600V 52A TO247-3

Shipment

Delivery Time

In-stock items can be shipped within 24 hours. Some parts will be arranged for delivery within 1-2 days from the date all items arrive at our warehouse. And Allelco ships order once a day at about 17:00, except Sunday. Once the goods are shipped, the estimated delivery time depends on the shipping methods and Delivery destination. The table below shows are the logistic time for some common countries.

Delivery Cost

> Use your express account for shipment if you have one.

> Use our account for the shipment. Refer to the table below for the approximate charges.

(Different time frame / countries / package size has different price.)

Delivery Method

> Global Common Shipment by DHL / UPS / FedEx / TNT / EMS / SF we support.

> Others more shipping ways, please get in touch with your customer manager.

Common Countries Logistic Time Reference		
Region	Country	Logistic Time(Day)
America	United States	5
	Brazil	7
Europe	Germany	5
	United Kingdom	4
	Italy	5
Oceania	Australia	6
	New Zealand	7
Asia	India	6
	Japan	7
Middle East	Israel	6

DHL & FedEx Shipment Charges Reference	
Shipment charges(KG)	Reference DHL(USD\$)
0.00kg-1.00kg	USD\$60.00
1.00kg-2.00kg	USD\$70.00
2.00kg-3.00kg	USD\$80.00

Note: The above table is for reference only. There may have some data bias for the uncontrollable factors.

Contact us if you have any questions.

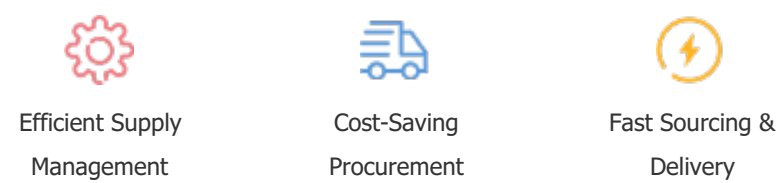
Payment Support

The payment method can be chosen from the methods shown below:

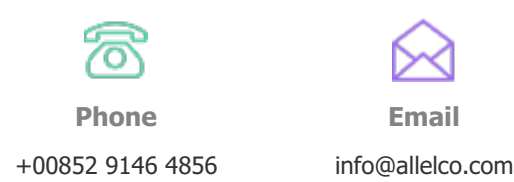
Wire Transfer (T/T, Bank Transfer), Western Union, Credit card, PayPal.



Your Faithful Supply Chain Partner -



Contact us if you have any questions.



Certifications & Memberships



[View More](#)