



Image may be representation.  
See specifications for product details.



## TZM5233B-GS08

Manufacturer Part Number	<b>TZM5233B-GS08</b>
Manufacturer	<b>Vishay General Semiconductor – Diodes Division</b>
Allelco Part Number	32D-TZM5233B-GS08
ECAD Model	Request Free CAD Models
Parts Description	DIODE ZENER 6V 500MW SOD80
Package	DO-213AC, MINI-MELF, SOD-80
Data sheet	<b>TZM5221B Thru TZM5267B.pdf</b>
RoHs Status	<b>ROHS3 Compliant</b>

**Get a Quote**

TZM5233B-GS08 - Vishay General Semiconductor - Diodes Division. New Original in Stock. Download Linear Technology TZM5233B-GS08 datasheet/specifications on AllelcoElec.com.  
Request a quote for TZM5233B-GS08, please send us email: [info@allelco.com](mailto:info@allelco.com)

### Specifications

TZM5233B-GS08 Tech Specifications  
TZM5233B-GS08 - Vishay General Semiconductor - Diodes Division technical specifications, attributes, parameters

Product Attribute	Attribute Value	Product Attribute	Attribute Value
Manufacturer	Vishay General Semiconductor – Diodes Division	Package / Case	DO-213AC, MINI-MELF, SOD-80
Voltage - Zener (Nom) (Vz)	6 V	Package	Tape & Reel (TR)
Voltage - Forward (Vf) (Max) @ If	1.1 V @ 200 mA	Operating Temperature	-65°C ~ 175°C
Tolerance	±5%	Mounting Type	Surface Mount
Supplier Device Package	SOD-80 MiniMELF	Impedance (Max) (Zzt)	7 Ohms
Series	Automotive, AEC-Q101	Current - Reverse Leakage @ Vr	5 µA @ 3.5 V
Power - Max	500 mW	Base Product Number	TZM5233

### Parts with Similar Specifications

The three parts on the right have similar specifications to Vishay General Semiconductor - Diodes Division TZM5233B-GS08

Product Attribute				
Part Number	TZM5233B-GS08	<b>TZM5234B-GS08</b>	<b>TZM5237C-GS18</b>	<b>TZM5236B-GS08</b>
Manufacturer	Vishay General Semiconductor - Diodes Division	Vishay General Semiconductor - Diodes Division	Vishay General Semiconductor - Diodes Division	Vishay General Semiconductor - Diodes Division
Power - Max	500 mW	500 mW	500 mW	500 mW
Voltage - Forward (Vf) (Max) @ If	1.1 V @ 200 mA	1.1 V @ 200 mA	1.1 V @ 200 mA	1.1 V @ 200 mA
Operating Temperature	-65°C ~ 175°C	175°C	175°C	175°C
Mounting Type	Surface Mount	Surface Mount	Surface Mount	Surface Mount
Current - Reverse Leakage @ Vr	5 µA @ 3.5 V	5 µA @ 4 V	3 µA @ 6.5 V	3 µA @ 6 V
Impedance (Max) (Zzt)	7 Ohms	7 Ohms	8 Ohms	6 Ohms
Voltage - Zener (Nom) (Vz)	6 V	6.2 V	8.2 V	7.5 V
Tolerance	±5%	±5%	±2%	±5%
Base Product Number	TZM5233	TZM5234	TZM5237	TZM5236
Package	Tape & Reel (TR)	Tape & Reel (TR)	Tape & Reel (TR)	Tape & Reel (TR)
Series	Automotive, AEC-Q101	Automotive, AEC-Q101	Automotive, AEC-Q101	Automotive, AEC-Q101
Package / Case	DO-213AC, MINI-MELF, SOD-80	DO-213AC, MINI-MELF, SOD-80	DO-213AC, MINI-MELF, SOD-80	DO-213AC, MINI-MELF, SOD-80
Supplier Device Package	SOD-80 MiniMELF	SOD-80 MiniMELF	SOD-80 MiniMELF	SOD-80 MiniMELF

### TZM5233B-GS08 Datasheet PDF

Download TZM5233B-GS08 pdf datasheets and Vishay General Semiconductor - Diodes Division documentation for TZM5233B-GS08 - Vishay General Semiconductor - Diodes Division.

#### Datasheets

[TZM5221B Thru TZM5267B.pdf](#)

#### PCN Assembly/Origin

[Wafer Source 12/Nov/2021.pdf](#)

### Customers Also Interested in

#### Recommended Products

<b>TZM5234B-GS08</b>	<b>TZM5237C-GS18</b>	<b>TZM5236B-GS08</b>	<b>TZM5234B-GS18</b>	<b>TZM5230B-GS08 C4V7</b>	<b>TZM5237B-GS08</b>
Vishay General Semiconductor - Diodes Division DIODE ZENER 6.2V 500MW SOD80	Vishay General Semiconductor - Diodes Division DIODE ZENER 8.2V 500MW SOD80	Vishay General Semiconductor - Diodes Division DIODE ZENER 7.5V 500MW SOD80	Vishay General Semiconductor - Diodes Division DIODE ZENER 6.2V 500MW SOD80	TEMIC	Vishay General Semiconductor - Diodes Division DIODE ZENER 8.2V 500MW SOD80

**TZM5236C-GS08**Vishay General Semiconductor - Diodes Division  
DIODE ZENER 7.5V 500MW SOD80**TZM5241B-GS08**Vishay General Semiconductor - Diodes Division  
DIODE ZENER 11V 500MW SOD80**TZM5230B-GS08**Vishay General Semiconductor - Diodes Division  
DIODE ZENER 4.7V 500MW SOD80**TZM5232B-GS08**Vishay General Semiconductor - Diodes Division  
DIODE ZENER 5.6V 500MW SOD80**TZM5232B-GS18**Vishay General Semiconductor - Diodes Division  
DIODE ZENER 5.6V 500MW SOD80**TZM5235B-GS08**Vishay General Semiconductor - Diodes Division  
DIODE ZENER 6.8V 500MW SOD80**TZM5231B-GS08**Vishay General Semiconductor - Diodes Division  
DIODE ZENER 5.1V 500MW SOD80**TZM5240B-GS08**Vishay General Semiconductor - Diodes Division  
DIODE ZENER 10V 500MW SOD80**TZM5230B-GS08 4.7V**

Electro-Films (EFI) / Vishay

**TZM5239B-GS08**Vishay General Semiconductor - Diodes Division  
DIODE ZENER 9.1V 500MW SOD80**TZM5230B-GS08(4V7)**

Electro-Films (EFI) / Vishay

**TZM5231B-GS18**Vishay General Semiconductor - Diodes Division  
DIODE ZENER 5.1V 500MW SOD80

## Shipment

### Delivery Time

In-stock items can be shipped within 24 hours. Some parts will be arranged for delivery within 1-2 days from the date all items arrive at our warehouse. And Allelco ships order once a day at about 17:00, except Sunday. Once the goods are shipped, the estimated delivery time depends on the shipping methods and Delivery destination. The table below shows are the logistic time for some common countries.

### Delivery Cost

&gt; Use your express account for shipment if you have one.

&gt; Use our account for the shipment. Refer to the table below for the approximate charges.

(Different time frame / countries / package size has different price.)

### Delivery Method

&gt; Global Common Shipment by DHL / UPS / FedEx / TNT / EMS / SF we support.

&gt; Others more shipping ways, please get in touch with your customer manager.

**Common Countries Logistic Time Reference**

Region	Country	Logistic Time(Day)
America	United States	5
	Brazil	7
Europe	Germany	5
	United Kingdom	4
	Italy	5
Oceania	Australia	6
	New Zealand	7
Asia	India	6
	Japan	7
Middle East	Israel	6

**DHL & FedEx Shipment Charges Reference**

Shipment charges(KG)	Reference DHL(USD\$)
0.00kg-1.00kg	USD\$60.00
1.00kg-2.00kg	USD\$70.00
2.00kg-3.00kg	USD\$80.00

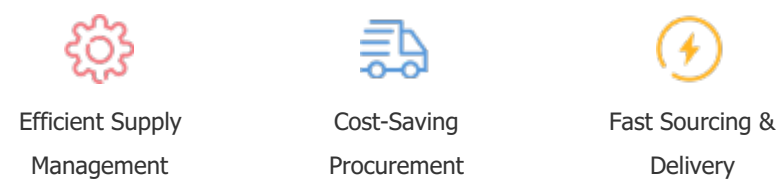
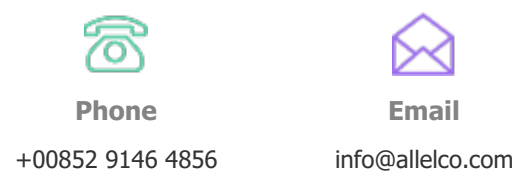
Note: The above table is for reference only. There may have some data bias for the uncontrollable factors.  
Contact us if you have any questions.

## Payment Support

The payment method can be chosen from the methods shown below:  
Wire Transfer (T/T, Bank Transfer), Western Union, Credit card, PayPal.



## Your Faithful Supply Chain Partner -

**Contact us if you have any questions.**

## Certifications & Memberships

[View More](#)

### Contact us

Address: Flat/Rm C 13/F Harvard Commercial Building 105-111 Thomson Road, Wan Chai, Hong Kong

Phone: +00852 9146 4856

Fax: +00852 3010 8510

Email: info@Allelco.com