

Image may be representation.  
See specifications for product details.



## M27C64A-20F1

Manufacturer Part Number	<b>M27C64A-20F1</b>
Manufacturer	<b>STMicroelectronics</b>
Allelco Part Number	32D-M27C64A-20F1
ECAD Model	Request Free CAD Models
Parts Description	IC EPROM 64KBIT PARALLEL 28CDIP
Package	28-CDIP (0.600", 15.24mm) Window
Data sheet	<b>M27C64A.pdf</b>
RoHs Status	<b>ROHS3 Compliant</b>

**Get a Quote**

M27C64A-20F1 - STMicroelectronics. New Original in Stock. Download Linear Technology M27C64A-20F1 datasheet/specifications on AllelcoElec.com.  
Request a quote for M27C64A-20F1, please send us email: [info@allelco.com](mailto:info@allelco.com)

### Specifications

M27C64A-20F1 Tech Specifications

M27C64A-20F1 - STMicroelectronics technical specifications, attributes, parameters

Product Attribute	Attribute Value	Product Attribute	Attribute Value
Manufacturer	STMicroelectronics	Mounting Type	Through Hole
Write Cycle Time - Word, Page	-	Memory Type	Non-Volatile
Voltage - Supply	4.5V ~ 5.5V	Memory Size	64Kbit
Technology	EPROM - UV	Memory Organization	8K x 8
Supplier Device Package	28-CDIP Frit Seal with Window	Memory Interface	Parallel
Series	-	Memory Format	EPROM
Package / Case	28-CDIP (0.600", 15.24mm) Window	Base Product Number	M27C64
Package	Tube	Access Time	200 ns
Operating Temperature	0°C ~ 70°C (TA)		

### Parts with Similar Specifications

The three parts on the right have similar specifications to STMicroelectronics M27C64A-20F1

Product Attribute				
Part Number	M27C64A-20F1	M27C64A-20F6	M27C64A-15F1	M27C64A-10F1
Manufacturer	STMicroelectronics	STMicroelectronics	STMicroelectronics	STMicroelectronics
Supplier Device Package	28-CDIP Frit Seal with Window	28-CDIP Frit Seal with Window	28-CDIP Frit Seal with Window	28-CDIP Frit Seal with Window
Memory Size	64Kbit	64Kbit	64Kbit	64Kbit
Technology	EPROM - UV	EPROM - UV	EPROM - UV	EPROM - UV
Operating Temperature	0°C ~ 70°C (TA)	-40°C ~ 85°C (TA)	0°C ~ 70°C (TA)	0°C ~ 70°C (TA)
Mounting Type	Through Hole	Through Hole	Through Hole	Through Hole
Write Cycle Time - Word, Page	-	-	-	-
Memory Organization	8K x 8	8K x 8	8K x 8	8K x 8
Memory Interface	Parallel	Parallel	Parallel	Parallel
Package	Tube	Tube	Tube	Tube
Base Product Number	M27C64	M27C64	M27C64	M27C64
Series	-	-	-	-
Memory Type	Non-Volatile	Non-Volatile	Non-Volatile	Non-Volatile
Memory Format	EPROM	EPROM	EPROM	EPROM
Access Time	200 ns	200 ns	150 ns	100 ns
Package / Case	28-CDIP (0.600", 15.24mm) Window	28-CDIP (0.600", 15.24mm) Window	28-CDIP (0.600", 15.24mm) Window	28-CDIP (0.600", 15.24mm) Window
Voltage - Supply	4.5V ~ 5.5V	4.5V ~ 5.5V	4.5V ~ 5.5V	4.5V ~ 5.5V

### M27C64A-20F1 Datasheet PDF

Download M27C64A-20F1 pdf datasheets and STMicroelectronics documentation for M27C64A-20F1 - STMicroelectronics.

#### Datasheets

M27C64A.pdf

### Customers Also Interested in

#### Recommended Products



**M27C516-15C1**  
STMicroelectronics



**M27C64A-20F6L**  
STMicroelectronics



**M27C64A-20F6**  
STMicroelectronics  
IC EPROM 64KBIT PARALLEL 28CDIP



**M27C64A-12F1**  
STMicroelectronics



**M27C64B-10F1**  
STMicroelectronics



**M27C64-900DI**



**M27C64A-20F1+**  
STMicroelectronics

**M27C64A-15F1**  
STMicroelectronics  
IC EPROM 64KBIT PARALLEL 28CDIP

**M27C64-15F1**  
STMicroelectronics

**M27C64A-25F6**  
STMicroelectronics

**M27C64A-12F6**  
STMicroelectronics

**M27C801-100E1**  
STMicroelectronics



**M27C800-100K1**  
STMicroelectronics

**M27C800-100F1**  
STMicroelectronics

**M27C64-150DI**  
AMD

**M27C516-55C1**  
STMicroelectronics

**M27C64A-20CQ**

**M27C64A-10F1**  
STMicroelectronics  
IC EPROM 64KBIT PARALLEL 28CDIP

## Shipment

### Delivery Time

In-stock items can be shipped within 24 hours. Some parts will be arranged for delivery within 1-2 days from the date all items arrive at our warehouse. And Allelco ships order once a day at about 17:00, except Sunday. Once the goods are shipped, the estimated delivery time depends on the shipping methods and Delivery destination. The table below shows are the logistic time for some common countries.

### Delivery Cost

- > Use your express account for shipment if you have one.
  - > Use our account for the shipment. Refer to the table below for the approximate charges.
- (Different time frame / countries / package size has different price.)

### Delivery Method

- > Global Common Shipment by DHL / UPS / FedEx / TNT / EMS / SF we support.
- > Others more shipping ways, please get in touch with your customer manager.

Common Countries Logistic Time Reference

Region	Country	Logistic Time(Day)
America	United States	5
	Brazil	7
Europe	Germany	5
	United Kingdom	4
	Italy	5
Oceania	Australia	6
	New Zealand	7
Asia	India	6
	Japan	7
Middle East	Israel	6

DHL & FedEx Shipment Charges Reference

Shipment charges(KG)	Reference DHL(USD\$)
0.00kg-1.00kg	USD\$60.00
1.00kg-2.00kg	USD\$70.00
2.00kg-3.00kg	USD\$80.00

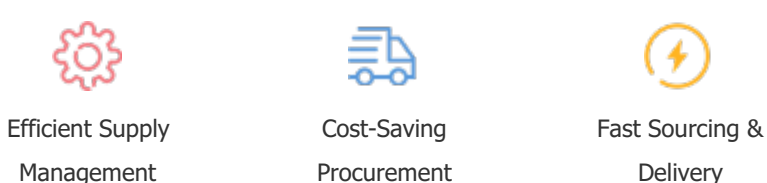
Note: The above table is for reference only. There may have some data bias for the uncontrollable factors.  
Contact us if you have any questions.

### Payment Support

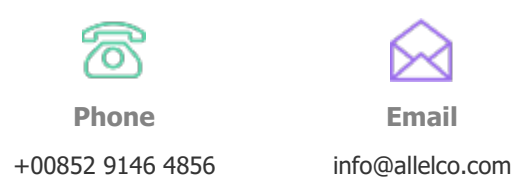
The payment method can be chosen from the methods shown below:  
Wire Transfer (T/T, Bank Transfer), Western Union, Credit card, PayPal.



### Your Faithful Supply Chain Partner -



Contact us if you have any questions.



### Certifications & Memberships



View More



WWW.ALLELCOELEC.COM

### Contact us

Address: Flat/Rm C 13/F Harvard Commercial Building 105-111 Thomson Road, Wan Chai, Hong Kong  
Phone: +00852 9146 4856  
Fax: +00852 3010 8510  
Email: info@Allelco.com

Copyright © 2012-2023 AllelcoElec.com. All rights reserved.