



Image may be representation.  
See specifications for product details.



## SM6T24CA

Manufacturer Part Number	<b>SM6T24CA</b>
Manufacturer	<b>STMicroelectronics</b>
Allelco Part Number	32D-SM6T24CA
ECAD Model	PCB Symbol, Footprint & 3D Mode
Parts Description	TVS DIODE 20.5VWM 42.8VC SMB
Package	DO-214AA, SMB
Data sheet	<b>SM6T.pdf</b>
RoHs Status	ROHS3 Compliant

**Get a Quote**

SM6T24CA - STMicroelectronics.New Original in Stock. Download Linear Technology SM6T24CA datasheet/specifications on AllelcoElec.com.  
Request a quote for SM6T24CA, please send us email: [info@allelco.com](mailto:info@allelco.com)

### Specifications

SM6T24CA Tech Specifications  
SM6T24CA - STMicroelectronics technical specifications, attributes, parameters

Product Attribute	Attribute Value	Product Attribute	Attribute Value
Manufacturer	STMicroelectronics	Package / Case	DO-214AA, SMB
Voltage - Reverse Standoff (Typ)	20.5V	Package	Tape & Reel (TR)
Voltage - Clamping (Max) @ Ipp	42.8V	Operating Temperature	-55°C ~ 150°C (TJ)
Voltage - Breakdown (Min)	22.8V	Mounting Type	Surface Mount
Type	Zener	Current - Peak Pulse (10/1000µs)	93A (8/20µs)
Supplier Device Package	SMB (DO-214AA)	Capacitance @ Frequency	-
Series	SM6T, TRANSIL™	Bidirectional Channels	1
Power Line Protection	No	Base Product Number	SM6T24
Power - Peak Pulse	600W	Applications	General Purpose

### Parts with Similar Specifications

The three parts on the right have similar specifications to STMicroelectronics SM6T24CA

Product Attribute				
Part Number	SM6T24CA	<b>SM6T27CA</b>	<b>SM6T22CA</b>	<b>SM6T30A</b>
Manufacturer	STMicroelectronics	STMicroelectronics	STMicroelectronics	STMicroelectronics
Bidirectional Channels	1	1	1	-
Operating Temperature	-55°C ~ 150°C (TJ)	-55°C ~ 150°C (TJ)	-55°C ~ 150°C (TJ)	-55°C ~ 150°C (TJ)
Current - Peak Pulse (10/1000µs)	93A (8/20µs)	83A (8/20µs)	102A (8/20µs)	75A (8/20µs)
Capacitance @ Frequency	-	-	-	-
Series	SM6T, TRANSIL™	Automotive, AEC-Q101, SM6TY, TRANSIL™	SM6T, TRANSIL™	SM6T, TRANSIL™
Package	Tape & Reel (TR)	Tape & Reel (TR)	Tape & Reel (TR)	Tape & Reel (TR)
Base Product Number	SM6T24	SM6T27	SM6T22	SM6T30
Package / Case	DO-214AA, SMB	DO-214AA, SMB	DO-214AA, SMB	DO-214AA, SMB
Applications	General Purpose	Automotive	General Purpose	General Purpose
Type	Zener	Zener	Zener	Zener
Voltage - Reverse Standoff (Typ)	20.5V	23.1V	18.8V	25.6V
Voltage - Breakdown (Min)	22.8V	25.7V	20.9V	28.5V
Power - Peak Pulse	600W	600W	600W	600W
Supplier Device Package	SMB (DO-214AA)	SMB (DO-214AA)	SMB (DO-214AA)	SMB (DO-214AA)
Voltage - Clamping (Max) @ Ipp	42.8V	48.3V	30.6V	53.5V
Mounting Type	Surface Mount	Surface Mount	Surface Mount	Surface Mount
Power Line Protection	No	No	No	No

### SM6T24CA Datasheet PDF

Download SM6T24CA pdf datasheets and STMicroelectronics documentation for SM6T24CA - STMicroelectronics.

#### HTML Datasheet

[SM6T.pdf](#)

#### Other Related Documents

[SM6T View All Specifications.pdf](#)

### Customers Also Interested in

#### Recommended Products

**SM6T27CAAY**STMicroelectronics  
TVS DIODE 23.1VWM 48.3VC SMB**SM6T22CA**STMicroelectronics  
TVS DIODE 18.8VWM 30.6VC SMB**SM6T30A**STMicroelectronics  
TVS DIODE 25.6VWM 53.5VC SMB**SM6T27CA**STMicroelectronics  
TVS DIODE 23.1VWM 48.3VC SMB**SM6T27AY**STMicroelectronics  
TVS DIODE 23.1VWM 48.3VC SMB**SM6T27A**STMicroelectronics  
TVS DIODE 23.1VWM 48.3VC SMB**SM6T27A-E3/52**Vishay General Semiconductor -  
Diodes Division  
TVS DIODE 23.1VWM 37.5VC  
DO214AA**SM6T24A-TR**

STMicroelectronics

**SM6T22CA-E3/52**Vishay General Semiconductor -  
Diodes Division  
TVS DIODE 18.8VWM 30.6VC  
DO214AA**SM6T24A-E3/52**Vishay General Semiconductor -  
Diodes Division  
TVS DIODE 20.5VWM 33.2VC  
DO214AA**SM6T24CA-E3/52**Vishay General Semiconductor -  
Diodes Division  
TVS DIODE 20.5VWM 33.2VC  
DO214AA**SM6T22AY**STMicroelectronics  
TVS DIODE 18.8VWM 30.6VC SMB**SM6T24AY**STMicroelectronics  
TVS DIODE 20.5VWM 42.8VC SMB**SM6T24CA-TR**

STMicroelectronics

**SM6T22CA-E3/5B**Vishay General Semiconductor -  
Diodes Division  
TVS DIODE 18.8VWM 30.6VC  
DO214AA**SM6T22CAT**

STMicroelectronics

**SM6T22CA-TR**

STMicroelectronics

**SM6T24A**STMicroelectronics  
TVS DIODE 20.5VWM 42.8VC SMB

## Shipment

### Delivery Time

In-stock items can be shipped within 24 hours. Some parts will be arranged for delivery within 1-2 days from the date all items arrive at our warehouse. And Alleco ships order once a day at about 17:00, except Sunday. Once the goods are shipped, the estimated delivery time depends on the shipping methods and Delivery destination. The table below shows are the logistic time for some common countries.

### Delivery Cost

> Use your express account for shipment if you have one.

> Use our account for the shipment. Refer to the table below for the approximate charges.

(Different time frame / countries / package size has different price.)

### Delivery Method

> Global Common Shipment by DHL / UPS / FedEx / TNT / EMS / SF we support.

> Others more shipping ways, please get in touch with your customer manager.

Common Countries Logistic Time Reference		
Region	Country	Logistic Time(Day)
America	United States	5
	Brazil	7
Europe	Germany	5
	United Kingdom	4
	Italy	5
Oceania	Australia	6
	New Zealand	7
Asia	India	6
	Japan	7
Middle East	Israel	6

DHL & FedEx Shipment Charges Reference	
Shipment charges(KG)	Reference DHL(USD\$)
0.00kg-1.00kg	USD\$60.00
1.00kg-2.00kg	USD\$70.00
2.00kg-3.00kg	USD\$80.00

Note: The above table is for reference only. There may have some data bias for the uncontrollable factors.

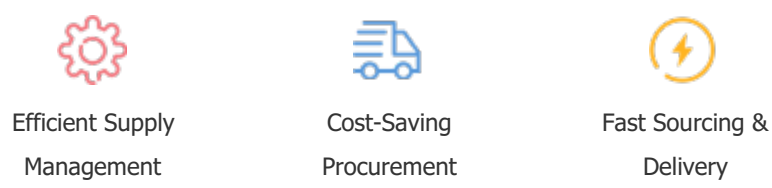
Contact us if you have any questions.

## Payment Support

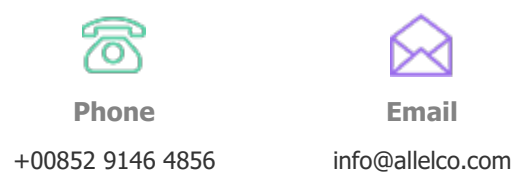
The payment method can be chosen from the methods shown below:  
Wire Transfer (T/T, Bank Transfer), Western Union, Credit card,  
PayPal.



## Your Faithful Supply Chain Partner -



Contact us if you have any questions.



+00852 9146 4856

info@alleco.com

## Certifications & Memberships



View More