

Image may be representation.
See specifications for product details.



MAX706RESA

Manufacturer Part Number	MAX706RESA
Manufacturer	Maxim Integrated
Allelco Part Number	32D-MAX706RESA
ECAD Model	Request Free CAD Models
Parts Description	IC SUPERVISOR MPU
Package	8-SOIC (0.154", 3.90mm Width)
Data sheet	MAX706RESA.pdf

Get a Quote

MAX706RESA - Analog Devices Inc./Maxim Integrated.New Original in Stock. Download Linear Technology MAX706RESA datasheet/specifications on AllelcoElec.com.
Request a quote for MAX706RESA, please send us email: info@allelco.com

Specifications

MAX706RESA Tech Specifications
MAX706RESA - Analog Devices Inc./Maxim Integrated technical specifications, attributes, parameters

Product Attribute	Attribute Value	Product Attribute	Attribute Value
Manufacturer	Maxim Integrated	Package / Case	8-SOIC (0.154", 3.90mm Width)
Voltage - Threshold	2.63V	Package	Bulk
Type	Power Supply Monitor	Output	Push-Pull, Totem Pole
Supplier Device Package	8-SOIC	Operating Temperature	-40°C ~ 85°C (TA)
Series	-	Number of Voltages Monitored	1
Reset Timeout	140ms Minimum	Mounting Type	Surface Mount
Reset	Active Low	Base Product Number	MAX706

Parts with Similar Specifications

The three parts on the right have similar specifications to Analog Devices Inc./Maxim Integrated MAX706RESA

Product Attribute				
Part Number	MAX706RESA	MAX706SCPA	MAX706RCPA+	MAX706RCSA+
Manufacturer	Analog Devices Inc./Maxim Integrated	Analog Devices Inc./Maxim Integrated	Analog Devices Inc./Maxim Integrated	Analog Devices Inc./Maxim Integrated
Operating Temperature	-40°C ~ 85°C (TA)	0°C ~ 70°C (TA)	-	0°C ~ 70°C (TA)
Reset Timeout	140ms Minimum	140ms Minimum	-	140ms Minimum
Mounting Type	Surface Mount	Through Hole	-	Surface Mount
Base Product Number	MAX706	MAX706	MAX706	MAX706
Package / Case	8-SOIC (0.154", 3.90mm Width)	8-DIP (0.300", 7.62mm)	-	8-SOIC (0.154", 3.90mm Width)
Package	Bulk	Tube	Bulk	Tube
Reset	Active Low	Active Low	-	Active Low
Supplier Device Package	8-SOIC	8-PDIP	-	8-SOIC
Output	Push-Pull, Totem Pole	Push-Pull, Totem Pole	-	Push-Pull, Totem Pole
Type	Power Supply Monitor	Simple Reset/Power-On Reset	-	Simple Reset/Power-On Reset
Number of Voltages Monitored	1	1	-	1
Voltage - Threshold	2.63V	2.93V	-	2.63V
Series	-	-	-	-

Customers Also Interested in

Recommended Products

MAX706SCPA Analog Devices Inc./Maxim Integrated IC SUPERVISOR 1 CHANNEL 8DIP	MAX706RCPA+ Analog Devices Inc./Maxim Integrated IC SUPERVISOR	MAX706RCSA+ Analog Devices Inc./Maxim Integrated IC SUPERVISOR 1 CHANNEL 8SOIC	MAX706RCSA Analog Devices Inc./Maxim Integrated IC SUPERVISOR MPU	MAX706RCUA+ Analog Devices Inc./Maxim Integrated IC SUPERVISOR 1 CHANNEL 8UMAX	MAX706RCSA+T Analog Devices Inc./Maxim Integrated IC SUPERVISOR 1 CHANNEL 8SOIC
MAX706RMJA Analog Devices Inc./Maxim Integrated IC SUPERVISOR 1 CHANNEL 8CERDIP	MAX706REUA+T Analog Devices Inc./Maxim Integrated IC SUPERVISOR 1 CHANNEL 8UMAX	MAX706RCUA+T Analog Devices Inc./Maxim Integrated IC SUPERVISOR 1 CHANNEL 8UMAX	MAX706REUA Analog Devices / Maxim Integrated	MAX706PESA+T Analog Devices Inc./Maxim Integrated IC SUPERVISOR 1 CHANNEL 8SOIC	MAX706S Analog Devices / Maxim Integrated
MAX706SCSA+ Analog Devices Inc./Maxim Integrated IC SUPERVISOR 1 CHANNEL 8SOIC	MAX706REPA Analog Devices Inc./Maxim Integrated IC SUPERVISOR MPU	MAX706SCSA Analog Devices Inc./Maxim Integrated IC SUPERVISOR 1 CHANNEL 8SOIC	MAX706RESA+T Analog Devices Inc./Maxim Integrated IC SUPERVISOR 1 CHANNEL 8SOIC	MAX706RCUA Analog Devices Inc./Maxim Integrated IC SUPERVISOR MPU	MAX706RESA+ Analog Devices Inc./Maxim Integrated IC SUPERVISOR 1 CHANNEL 8SOIC

Shipment

Delivery Time

In-stock items can be shipped within 24 hours. Some parts will be arranged for delivery within 1-2 days from the date all items arrive at our warehouse. And Allelco ships order once a day at about 17:00, except Sunday. Once the goods are shipped, the estimated delivery time depends on the shipping methods and Delivery destination. The table below shows are the logistic time for some common countries.

Delivery Cost

> Use your express account for shipment if you have one.

> Use our account for the shipment. Refer to the table below for the approximate charges.

(Different time frame / countries / package size has different price.)

Delivery Method

> Global Common Shipment by DHL / UPS / FedEx / TNT / EMS / SF we support.

> Others more shipping ways, please get in touch with your customer manager.

Common Countries Logistic Time Reference		
Region	Country	Logistic Time(Day)
America	United States	5
	Brazil	7
Europe	Germany	5
	United Kingdom	4
	Italy	5
Oceania	Australia	6
	New Zealand	7
Asia	India	6
	Japan	7
Middle East	Israel	6

DHL & FedEx Shipment Charges Reference	
Shipment charges(KG)	Reference DHL(USD\$)
0.00kg-1.00kg	USD\$60.00
1.00kg-2.00kg	USD\$70.00
2.00kg-3.00kg	USD\$80.00

Note: The above table is for reference only. There may have some data bias for the uncontrollable factors.

Contact us if you have any questions.

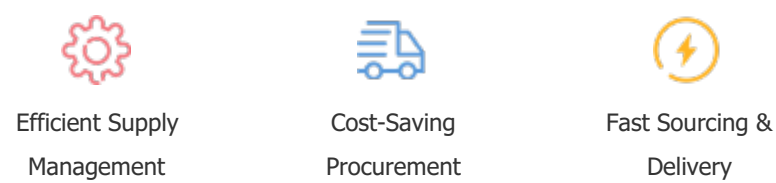
Payment Support

The payment method can be chosen from the methods shown below:

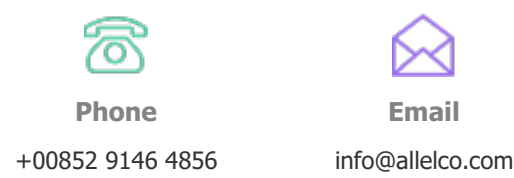
Wire Transfer (T/T, Bank Transfer), Western Union, Credit card, PayPal.



Your Faithful Supply Chain Partner -



Contact us if you have any questions.



Certifications & Memberships



[View More](#)



Contact us

Address: Flat/Rm C 13/F Harvard Commercial Building 105-111 Thomson Road, Wan Chai, Hong Kong

Phone: +00852 9146 4856

Fax: +00852 3010 8510

Email: info@Allelco.com

Copyright © 2012-2023 AllelcoElec.com. All rights reserved.