



Image may be representation.
See specifications for product details.



DS2788E+

Manufacturer Part Number	DS2788E+
Manufacturer	Maxim Integrated
Allelco Part Number	32D-DS2788E+
ECAD Model	Request Free CAD Models
Parts Description	IC BATT MON LI-ION 1CELL 14TSSOP
Package	14-TSSOP (0.173', 4.40mm Width)
Data sheet	Cylindrical Battery Holders.pdf
RoHs Status	ROHS3 Compliant

Get a Quote

DS2788E+ - Analog Devices Inc./Maxim Integrated. New Original in Stock. Download Linear Technology DS2788E+ datasheet/specifications on AllelcoElec.com. Request a quote for DS2788E+, please send us email: info@allelco.com

Specifications

DS2788E+ Tech Specifications
DS2788E+ - Analog Devices Inc./Maxim Integrated technical specifications, attributes, parameters

Product Attribute	Attribute Value	Product Attribute	Attribute Value
Manufacturer	Maxim Integrated	Mounting Type	Surface Mount
Supplier Device Package	14-TSSOP	Interface	1-Wire
Series	-	Function	Battery Monitor
Package / Case	14-TSSOP (0.173', 4.40mm Width)	Fault Protection	-
Package	Tube	Battery Chemistry	Lithium Ion/Polymer
Operating Temperature	-20°C ~ 70°C (TA)	Base Product Number	DS2788
Number of Cells	1		

Parts with Similar Specifications

The three parts on the right have similar specifications to Analog Devices Inc./Maxim Integrated DS2788E+

Product Attribute				
Part Number	DS2788E+	DS2786G+T&R	DS2788E+T&R	DS2786G-C29+T
Manufacturer	Analog Devices Inc./Maxim Integrated	Analog Devices Inc./Maxim Integrated	Analog Devices Inc./Maxim Integrated	Analog Devices Inc./Maxim Integrated
Interface	1-Wire	I ² C	1-Wire	I ² C
Battery Chemistry	Lithium Ion/Polymer	Lithium Ion/Polymer	Lithium Ion/Polymer	Lithium Ion/Polymer
Number of Cells	1	-	1	-
Mounting Type	Surface Mount	Surface Mount	Surface Mount	Surface Mount
Base Product Number	DS2788	DS2786	DS2788	DS2786
Function	Battery Monitor	Battery Monitor	Battery Monitor	Battery Monitor
Fault Protection	-	-	-	-
Operating Temperature	-20°C ~ 70°C (TA)	-20°C ~ 70°C (TA)	-20°C ~ 70°C (TA)	-20°C ~ 70°C (TA)
Series	-	-	-	-
Package	Tube	Tape & Reel (TR)	Tape & Reel (TR)	Tape & Reel (TR)
Supplier Device Package	14-TSSOP	10-TDFN (3x3)	14-TSSOP	10-TDFN (3x3)
Package / Case	14-TSSOP (0.173', 4.40mm Width)	10-WDFN Exposed Pad	14-TSSOP (0.173', 4.40mm Width)	10-WDFN Exposed Pad

DS2788E+ Datasheet PDF

Download DS2788E+ pdf datasheets and Analog Devices Inc./Maxim Integrated documentation for DS2788E+ - Analog Devices Inc./Maxim Integrated.

Datasheets

[Cylindrical Battery Holders.pdf](#)

Environmental Information

[Maxim Integrated RoHS Cert.pdf](#)

[Material Declaration DS2788E+.pdf](#)

Application Notes

[Understanding the DS1WM Synthesizable 1-Wire Bus M.pdf](#)

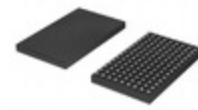
[Calibrating RSGAIN for the DS278x Family of Fuel G.pdf](#)

[Calibrating the Current Offset Bias \(COB\) Register.pdf](#)

Customers Also Interested in

Recommended Products

DS280BR810ZBFR Texas Instruments IC REPEATER 28GBPS 135NFBGA	DS2786G+T&R Analog Devices Inc./Maxim Integrated IC BATT MONITOR LI-ION 10TDFN	DS2786G Analog Devices / Maxim Integrated	DS2788E+T&R Analog Devices Inc./Maxim Integrated IC BATT MON LI-ION 1CELL 14TSSOP	DS2788 Analog Devices / Maxim Integrated	DS2786G-C29+T Analog Devices Inc./Maxim Integrated IC BATT MONITOR LI-ION 10TDFN



DS280BR810ZBFT

Texas Instruments
IC REPEATER 8CH 135NFBGA

DS28015K00

Analog Devices / Maxim
Integrated

DS2786G+T&R

Analog Devices / Maxim
Integrated

DS280BR820ZBLR

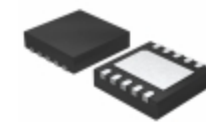
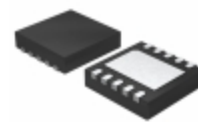
Texas Instruments
IC REPEATER 28GBPS 135NFBGA

DS2786G+T

Analog Devices / Maxim
Integrated

DS2786G+TR

Analog Devices / Maxim
Integrated



DS2805+

Analog Devices / Maxim
Integrated

DS2807

Analog Devices / Maxim
Integrated

DS2807+

Analog Devices / Maxim
Integrated

DS2786G+

Analog Devices Inc./Maxim
Integrated
IC BATT MONITOR LI-ION 10TDFN

DS2786BG+

Analog Devices Inc./Maxim
Integrated
IC BATT MONITOR LI-ION 10TDFN

DS2786BG+T&R

Analog Devices / Maxim
Integrated

Shipment

Delivery Time

In-stock items can be shipped within 24 hours. Some parts will be arranged for delivery within 1-2 days from the date all items arrive at our warehouse. And Allelco ships order once a day at about 17:00, except Sunday. Once the goods are shipped, the estimated delivery time depends on the shipping methods and Delivery destination. The table below shows are the logistic time for some common countries.

Delivery Cost

> Use your express account for shipment if you have one.

> Use our account for the shipment. Refer to the table below for the approximate charges.

(Different time frame / countries / package size has different price.)

Delivery Method

> Global Common Shipment by DHL / UPS / FedEx / TNT / EMS / SF we support.

> Others more shipping ways, please get in touch with your customer manager.

Common Countries Logistic Time Reference

Region	Country	Logistic Time(Day)
America	United States	5
	Brazil	7
Europe	Germany	5
	United Kingdom	4
	Italy	5
Oceania	Australia	6
	New Zealand	7
Asia	India	6
	Japan	7
Middle East	Israel	6

DHL & FedEx Shipment Charges Reference

Shipment charges(KG)	Reference DHL(USD\$)
0.00kg-1.00kg	USD\$60.00
1.00kg-2.00kg	USD\$70.00
2.00kg-3.00kg	USD\$80.00

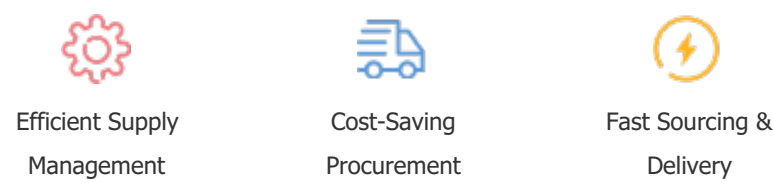
Note: The above table is for reference only. There may have some data bias for the uncontrollable factors.
Contact us if you have any questions.

Payment Support

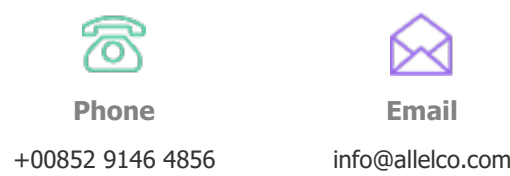
The payment method can be chosen from the methods shown below:
Wire Transfer (T/T, Bank Transfer), Western Union, Credit card,
PayPal.



Your Faithful Supply Chain Partner -



Contact us if you have any questions.



Certifications & Memberships



View More



Contact us

Address: Flat/Rm C 13/F Harvard Commercial Building 105-111 Thomson Road, Wan Chai, Hong Kong

Phone: +00852 9146 4856

Fax: +00852 3010 8510

Email: info@allelco.com

Copyright © 2012-2023 AllelcoElec.com. All rights reserved.