

Image may be representation.  
See specifications for product details.



## EP3C16M164I7N

Manufacturer Part Number	<b>EP3C16M164I7N</b>
Manufacturer	<b>Intel</b>
Allelco Part Number	32D-EP3C16M164I7N
ECAD Model	PCB Symbol, Footprint & 3D Mode
Parts Description	IC FPGA 92 I/O 164MBGA
Package	164-TFBGA
Data sheet	<a href="#">Virtual JTAG Megafuntion Guide.pdf</a> <a href="#">Cyclone III Device Handbook Vol2.pdf</a> <a href="#">Cyclone III Device Handbook Vol2.pdf</a> <a href="#">Cyclone III Family Overview.pdf</a> <a href="#">Cyclone III Device Handbook Vol1.pdf</a>
RoHS Status	RoHS Compliant

**Get a Quote**

EP3C16M164I7N - Intel.New Original in Stock. Download Linear Technology EP3C16M164I7N datasheet/specifications on AllelcoElec.com.  
Request a quote for EP3C16M164I7N, please send us email: [info@allelco.com](mailto:info@allelco.com)

### Specifications

EP3C16M164I7N Tech Specifications  
EP3C16M164I7N - Intel technical specifications, attributes, parameters

Product Attribute	Attribute Value	Product Attribute	Attribute Value
Manufacturer	Intel	Operating Temperature	-40°C ~ 100°C (TJ)
Voltage - Supply	1.15V ~ 1.25V	Number of Logic Elements/Cells	15408
Total RAM Bits	516096	Number of LABs/CLBs	963
Supplier Device Package	164-MBGA (8x8)	Number of I/O	92
Series	Cyclone® III	Mounting Type	Surface Mount
Package / Case	164-TFBGA	Base Product Number	EP3C16
Package	Tray		

### Parts with Similar Specifications

The three parts on the right have similar specifications to Intel EP3C16M164I7N

Product Attribute				
Part Number	EP3C16M164I7N	EP3C16Q240C8	EP3C16F484C7	EP3C16F484C6N
Manufacturer	Intel	Intel	Intel	Intel
Total RAM Bits	516096	516096	516096	516096
Number of I/O	92	160	346	346
Base Product Number	EP3C16	EP3C16	EP3C16	EP3C16
Operating Temperature	-40°C ~ 100°C (TJ)	0°C ~ 85°C (TJ)	0°C ~ 85°C (TJ)	0°C ~ 85°C (TJ)
Mounting Type	Surface Mount	Surface Mount	Surface Mount	Surface Mount
Number of Logic Elements/Cells	15408	15408	15408	15408
Voltage - Supply	1.15V ~ 1.25V	1.15V ~ 1.25V	1.15V ~ 1.25V	1.15V ~ 1.25V
Package	Tray	Tray	Tray	Tray
Supplier Device Package	164-MBGA (8x8)	240-PQFP (32x32)	484-FBGA (23x23)	484-FBGA (23x23)
Number of LABs/CLBs	963	963	963	963
Package / Case	164-TFBGA	240-BFQFP	484-BGA	484-BGA
Series	Cyclone® III	Cyclone® III	Cyclone® III	Cyclone® III

### EP3C16M164I7N Datasheet PDF

Download EP3C16M164I7N pdf datasheets and Intel documentation for EP3C16M164I7N - Intel.

#### Datasheets

- [Virtual JTAG Megafuntion Guide.pdf](#)
- [Cyclone III Device Handbook Vol2.pdf](#)
- [Cyclone III Family Overview.pdf](#)

#### PCN Design/Specification

- [Mult Series Software Chgs 26/Mar/2020.pdf](#)
- [Cyclone Material Chgs 15/Jul/2016.pdf](#)

#### PCN Packaging

- [Mult Dev Label CHG 24/Jan/2020.pdf](#)
- [Mult Dev Label Chgs 24/Feb/2020.pdf](#)

#### HTML Datasheet

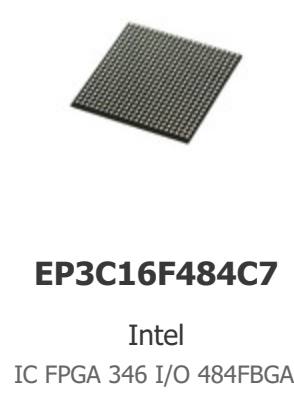
- [Cyclone III Device Handbook Vol2.pdf](#)
- [Cyclone III Device Handbook Vol1.pdf](#)

### Customers Also Interested in

#### Recommended Products



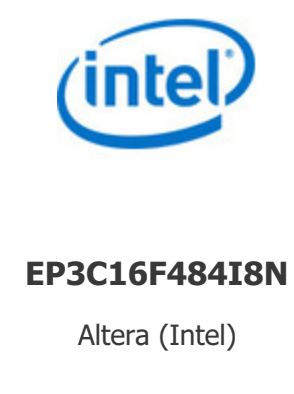
**EP3C16Q240C8**  
Intel  
IC FPGA 160 I/O 240QFP



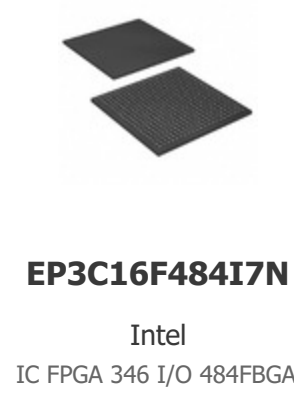
**EP3C16F484C7**  
Intel  
IC FPGA 346 I/O 484FBGA



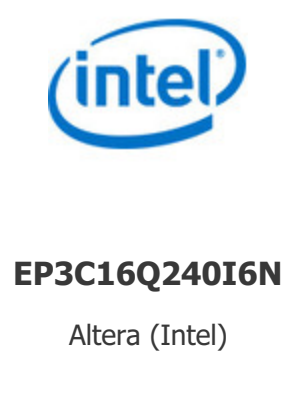
**EP3C16F484C6N**  
Intel  
IC FPGA 346 I/O 484FBGA



**EP3C16F484I8N**  
Altera (Intel)  
IC FPGA 346 I/O 484FBGA



**EP3C16F484I7N**  
Intel  
IC FPGA 346 I/O 484FBGA



**EP3C16Q240I6N**  
Altera (Intel)  
IC FPGA 168 I/O 256UBGA



**EP3C16U256I7N**  
Intel  
IC FPGA 168 I/O 256UBGA



**EP3C16U256C8N**  
Intel  
IC FPGA 168 I/O 256UBGA



**EP3C16Q240C8N**  
Intel  
IC FPGA 160 I/O 240QFP



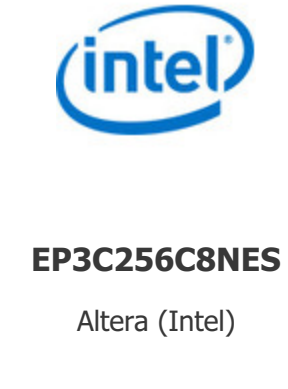
**EP3C16U256A7N**  
Intel  
IC FPGA 168 I/O 256UBGA



**EP3C16F484C7N**  
Intel  
IC FPGA 346 I/O 484FBGA



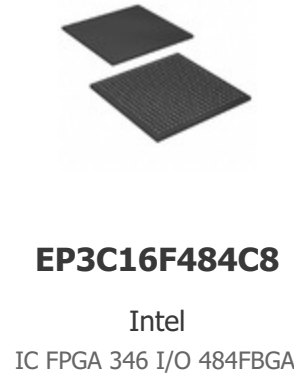
**EP3C16U256C7N**  
Intel  
IC FPGA 168 I/O 256UBGA



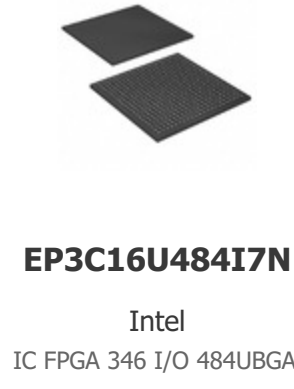
**EP3C256C8NES**  
Altera (Intel)  
IC FPGA 92 I/O 164MBGA



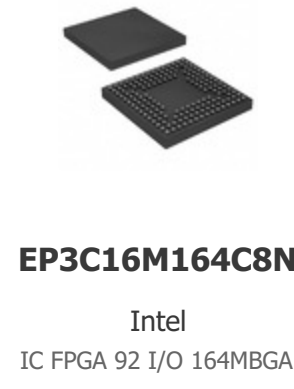
**EP3C16F484C8N**  
Intel  
IC FPGA 346 I/O 484FBGA



**EP3C16F484C8**  
Intel  
IC FPGA 346 I/O 484FBGA



**EP3C16U484I7N**  
Intel  
IC FPGA 346 I/O 484UBGA



**EP3C16M164C8N**  
Intel  
IC FPGA 92 I/O 164MBGA



**EP3C16F484I7**  
Intel  
IC FPGA 346 I/O 484FBGA

## Shipment

### Delivery Time

In-stock items can be shipped within 24 hours. Some parts will be arranged for delivery within 1-2 days from the date all items arrive at our warehouse. And Allelco ships order once a day at about 17:00, except Sunday. Once the goods are shipped, the estimated delivery time depends on the shipping methods and Delivery destination. The table below shows are the logistic time for some common countries.

### Delivery Cost

- > Use your express account for shipment if you have one.
  - > Use our account for the shipment. Refer to the table below for the approximate charges.
- (Different time frame / countries / package size has different price.)

### Delivery Method

- > Global Common Shipment by DHL / UPS / FedEx / TNT / EMS / SF we support.
- > Others more shipping ways, please get in touch with your customer manager.

Common Countries Logistic Time Reference		
Region	Country	Logistic Time(Day)
America	United States	5
	Brazil	7
Europe	Germany	5
	United Kingdom	4
	Italy	5
Oceania	Australia	6
	New Zealand	7
Asia	India	6
	Japan	7
Middle East	Israel	6

DHL & FedEx Shipment Charges Reference	
Shipment charges(KG)	Reference DHL(USD\$)
0.00kg-1.00kg	USD\$60.00
1.00kg-2.00kg	USD\$70.00
2.00kg-3.00kg	USD\$80.00

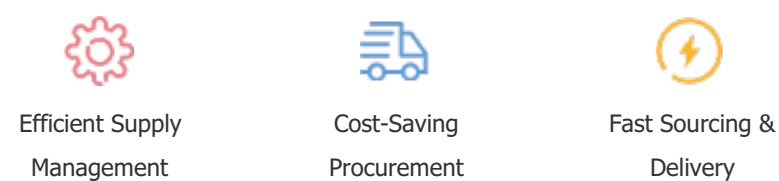
Note: The above table is for reference only. There may have some data bias for the uncontrollable factors.  
Contact us if you have any questions.

### Payment Support

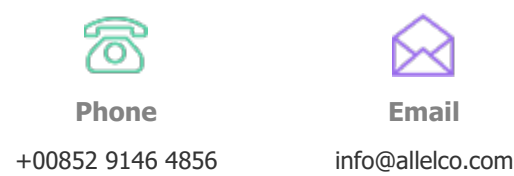
The payment method can be chosen from the methods shown below:  
Wire Transfer (T/T, Bank Transfer), Western Union, Credit card, PayPal.



### Your Faithful Supply Chain Partner -



Contact us if you have any questions.



### Certifications & Memberships



[View More](#)