



Image may be representation.  
See specifications for product details.



## ADA4084-2ARMZ-R7

Manufacturer Part Number	<a href="#">ADA4084-2ARMZ-R7</a>
Manufacturer	<a href="#">Analog Devices, Inc.</a>
Allelco Part Number	32D-ADA4084-2ARMZ-R7
ECAD Model	PCB Symbol, Footprint & 3D Model
Parts Description	IC OPAMP GP 2 CIRCUIT 8MSOP
Package	8-TSSOP, 8-MSOP (0.118", 3.00mm Width)
Data sheet	<a href="#">ADA4084-2ARMZ-R7.pdf</a>
RoHs Status	<b>ROHS3 Compliant</b>

**Get a Quote**

ADA4084-2ARMZ-R7 - Analog Devices Inc..New Original in Stock. Download Linear Technology ADA4084-2ARMZ-R7 datasheet/specifications on AllelcoElec.com. Request a quote for ADA4084-2ARMZ-R7, please send us email: [info@allelco.com](mailto:info@allelco.com)

### Specifications

ADA4084-2ARMZ-R7 Tech Specifications  
ADA4084-2ARMZ-R7 - Analog Devices Inc. technical specifications, attributes, parameters

Product Attribute	Attribute Value	Product Attribute	Attribute Value
Manufacturer	Analog Devices, Inc.	Operating Temperature	-40°C ~ 125°C
Voltage - Supply Span (Min)	3 V	Number of Circuits	2
Voltage - Supply Span (Max)	30 V	Mounting Type	Surface Mount
Voltage - Input Offset	60 µV	Gain Bandwidth Product	15.9 MHz
Supplier Device Package	8-MSOP	Current - Supply	625µA (x2 Channels)
Slew Rate	4.6V/µs	Current - Output / Channel	30 mA
Series	-	Current - Input Bias	140 nA
Package / Case	8-TSSOP, 8-MSOP (0.118", 3.00mm Width)	Base Product Number	ADA4084
Package	Tape & Reel (TR)	Amplifier Type	General Purpose
Output Type	Rail-to-Rail	-3db Bandwidth	13.9 MHz

### Parts with Similar Specifications

The three parts on the right have similar specifications to Analog Devices Inc. ADA4084-2ARMZ-R7

Product Attribute				
Part Number	ADA4084-2ARMZ-R7	<a href="#">ADA4084-2ACPZ-R7</a>	<a href="#">ADA4091-2ACPZ-R7</a>	<a href="#">ADA4084-2ARZ-R7</a>
Manufacturer	Analog Devices Inc.	Analog Devices Inc.	Analog Devices Inc.	Analog Devices Inc.
Slew Rate	4.6V/µs	4.6V/µs	0.46V/µs	4.6V/µs
Voltage - Supply Span (Max)	30 V	30 V	30 V	30 V
Supplier Device Package	8-MSOP	8-LFCSP-WD (3x3)	8-LFCSP-WD (3x3)	8-SOIC
Voltage - Input Offset	60 µV	90 µV	35 µV	30 µV
Current - Input Bias	140 nA	140 nA	50 nA	140 nA
-3db Bandwidth	13.9 MHz	13.9 MHz	-	13.9 MHz
Package / Case	8-TSSOP, 8-MSOP (0.118", 3.00mm Width)	8-WFDN Exposed Pad, CSP	8-WFDN Exposed Pad, CSP	8-SOIC (0.154", 3.90mm Width)
Current - Output / Channel	30 mA	30 mA	20 mA	30 mA
Voltage - Supply Span (Min)	3 V	3 V	3 V	3 V
Amplifier Type	General Purpose	General Purpose	General Purpose	General Purpose
Gain Bandwidth Product	15.9 MHz	15.9 MHz	1.27 MHz	15.9 MHz
Current - Supply	625µA (x2 Channels)	625µA (x2 Channels)	200µA (x4 Channels)	625µA (x2 Channels)
Number of Circuits	2	2	2	2
Series	-	-	-	-
Output Type	Rail-to-Rail	Rail-to-Rail	Rail-to-Rail	Rail-to-Rail
Operating Temperature	-40°C ~ 125°C	-40°C ~ 125°C	-40°C ~ 125°C	-40°C ~ 125°C
Mounting Type	Surface Mount	Surface Mount	Surface Mount	Surface Mount
Base Product Number	ADA4084	ADA4084	ADA4091	ADA4084
Package	Tape & Reel (TR)	Tape & Reel (TR)	Tape & Reel (TR)	Tape & Reel (TR)

### ADA4084-2ARMZ-R7 Datasheet PDF

Download ADA4084-2ARMZ-R7 pdf datasheets and Analog Devices Inc. documentation for ADA4084-2ARMZ-R7 - Analog Devices Inc..

#### Other Related Documents

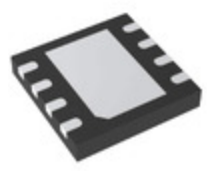
[Tape and Reel Packaging.pdf](#)

#### PCN Assembly/Origin

[Mult Dev 04/Apr/2023.pdf](#)

### Customers Also Interested in

## Recommended Products



**ADA4084-2ACPZ-R7**  
Analog Devices Inc.  
IC OPAMP GP 2 CIRCUIT 8LFCSP



**ADA4091-2ACPZ-R7**  
Analog Devices Inc.  
IC OPAMP GP 2 CIRCUIT 8LFCSP



**ADA4084-2ARZ-R7**  
Analog Devices Inc.  
IC OPAMP GP 2 CIRCUIT 8SOIC



**ADA4091-4ARUZ-RL**  
Analog Devices Inc.  
IC OPAMP GP 4 CIRCUIT 14TSSOP



**ADA4084-4ARUZ**  
Analog Devices Inc.  
IC OPAMP GP 4 CIRCUIT 14TSSOP



**ADA4077-4ARUZ**  
Analog Devices Inc.  
IC OPAMP GP 4 CIRCUIT 14TSSOP



**ADA4084-1ARZ-R7**  
Analog Devices Inc.  
IC OPAMP GP 1 CIRCUIT 8SOIC



**ADA4084-1ARJZ-R7**  
Analog Devices Inc.  
IC OPAMP GP 1 CIRCUIT SOT23-5



**ADA4091-2ARZ**  
Analog Devices Inc.  
IC OPAMP GP 2 CIRCUIT 8SOIC



**ADA4077-2BRZ-R7**  
Analog Devices Inc.  
IC OPAMP GP 2 CIRCUIT 8SOIC



**ADA4091-4ARUZ**  
Analog Devices Inc.  
IC OPAMP GP 4 CIRCUIT 14TSSOP



**ADA4077-4ARUZ-R7**  
Analog Devices Inc.  
IC OPAMP GP 4 CIRCUIT 14TSSOP



**ADA4084-2ARZ**  
Analog Devices Inc.  
IC OPAMP GP 2 CIRCUIT 8SOIC



**ADA4077-4ARZ**  
Analog Devices Inc.  
IC OPAMP GP 4 CIRCUIT 14SOIC



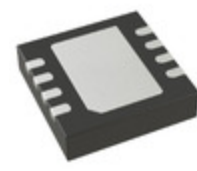
**ADA4084-1ARZ**  
Analog Devices Inc.  
IC OPAMP GP 1 CIRCUIT 8SOIC



**ADA4077-4ARZ-R7**  
Analog Devices Inc.  
IC OPAMP GP 4 CIRCUIT 14SOIC



**ADA4084-2ARMZ**  
Analog Devices Inc.  
IC OPAMP GP 2 CIRCUIT 8MSOP



**ADA4091-2ACPZ-R2**  
Analog Devices Inc.  
IC OPAMP GP 2 CIRCUIT 8LFCSP

## Shipment

### Delivery Time

In-stock items can be shipped within 24 hours. Some parts will be arranged for delivery within 1-2 days from the date all items arrive at our warehouse. And Allelco ships order once a day at about 17:00, except Sunday. Once the goods are shipped, the estimated delivery time depends on the shipping methods and Delivery destination. The table below shows are the logistic time for some common countries.

### Delivery Cost

- > Use your express account for shipment if you have one.
  - > Use our account for the shipment. Refer to the table below for the approximate charges.
- (Different time frame / countries / package size has different price.)

### Delivery Method

- > Global Common Shipment by DHL / UPS / FedEx / TNT / EMS / SF we support.
- > Others more shipping ways, please get in touch with your customer manager.

Common Countries Logistic Time Reference		
Region	Country	Logistic Time(Day)
America	United States	5
	Brazil	7
Europe	Germany	5
	United Kingdom	4
	Italy	5
Oceania	Australia	6
	New Zealand	7
Asia	India	6
	Japan	7
Middle East	Israel	6

DHL & FedEx Shipment Charges Reference	
Shipment charges(KG)	Reference DHL(USD\$)
0.00kg-1.00kg	USD\$60.00
1.00kg-2.00kg	USD\$70.00
2.00kg-3.00kg	USD\$80.00

Note: The above table is for reference only. There may have some data bias for the uncontrollable factors.  
Contact us if you have any questions.

### Payment Support

The payment method can be chosen from the methods shown below:  
Wire Transfer (T/T, Bank Transfer), Western Union, Credit card, PayPal.



### Your Faithful Supply Chain Partner -

- Efficient Supply Management
- Cost-Saving Procurement
- Fast Sourcing & Delivery

Contact us if you have any questions.

- Phone  
+00852 9146 4856
- Email  
info@allelco.com

### Certifications & Memberships



[View More](#)