



Image may be representation.
See specifications for product details.

MAX5160MEUA+

Manufacturer Part Number	MAX5160MEUA+
Manufacturer	Maxim Integrated
Allelco Part Number	32D-MAX5160MEUA+
ECAD Model	Request Free CAD Models
Parts Description	IC DCTL POT 100KOHM 32TAP 8UMAX
Package	8-TSSOP, 8-MSOP (0.118', 3.00mm Width)
Data sheet	Cylindrical Battery Holders.pdf
RoHs Status	ROHS3 Compliant

Get a Quote



MAX5160MEUA+ - Analog Devices Inc./Maxim Integrated.New Original in Stock. Download Linear Technology MAX5160MEUA+ datasheet/specifications on AllelcoElec.com.
Request a quote for MAX5160MEUA+, please send us email: info@allelco.com

Specifications

MAX5160MEUA+ Tech Specifications
MAX5160MEUA+ - Analog Devices Inc./Maxim Integrated technical specifications, attributes, parameters

Product Attribute	Attribute Value	Product Attribute	Attribute Value
Manufacturer	Maxim Integrated	Package	Tube
Voltage - Supply	2.7V ~ 5.5V	Operating Temperature	-40°C ~ 85°C
Tolerance	±25%	Number of Taps	32
Temperature Coefficient (Typ)	50ppm/°C	Number of Circuits	1
Taper	Linear	Mounting Type	Surface Mount
Supplier Device Package	8-uMAX/uSOP	Memory Type	Volatile
Series	-	Interface	Up/Down (U/D, INC, CS)
Resistance - Wiper (Ohms) (Typ)	400	Features	-
Resistance (Ohms)	100k	Configuration	Potentiometer
Package / Case	8-TSSOP, 8-MSOP (0.118', 3.00mm Width)	Base Product Number	MAX5160

Parts with Similar Specifications

The three parts on the right have similar specifications to Analog Devices Inc./Maxim Integrated MAX5160MEUA+

Product Attribute				
Part Number	MAX5160MEUA+	MAX5161MEZT+T	MAX5161LEZT	MAX5161MEZT
Manufacturer	Analog Devices Inc./Maxim Integrated	Analog Devices Inc./Maxim Integrated	Analog Devices Inc./Maxim Integrated	Analog Devices Inc./Maxim Integrated
Package / Case	8-TSSOP, 8-MSOP (0.118', 3.00mm Width)	-	SOT-23-6 Thin, TSOT-23-6	SOT-23-6 Thin, TSOT-23-6
Operating Temperature	-40°C ~ 85°C	-	-40°C ~ 85°C	-40°C ~ 85°C
Tolerance	±25%	-	±25%	±25%
Base Product Number	MAX5160	MAX516	-	-
Resistance - Wiper (Ohms) (Typ)	400	-	400	400
Package	Tube	Tape & Reel (TR)	Bulk	Bulk
Interface	Up/Down (U/D, INC, CS)	-	Up/Down (U/D, INC, CS)	Up/Down (U/D, INC, CS)
Resistance (Ohms)	100k	-	50k	100k
Number of Circuits	1	-	1	1
Mounting Type	Surface Mount	-	Surface Mount	Surface Mount
Supplier Device Package	8-uMAX/uSOP	-	TSOT-23-6	TSOT-23-6
Memory Type	Volatile	-	Volatile	Volatile
Taper	Linear	-	Linear	Linear
Configuration	Potentiometer	-	Potentiometer	Potentiometer
Voltage - Supply	2.7V ~ 5.5V	-	2.7V ~ 5.5V	2.7V ~ 5.5V
Temperature Coefficient (Typ)	50ppm/°C	-	50ppm/°C	50ppm/°C
Features	-	-	-	-
Number of Taps	32	-	32	32
Series	-	*	-	-

MAX5160MEUA+ Datasheet PDF

Download MAX5160MEUA+ pdf datasheets and Analog Devices Inc./Maxim Integrated documentation for MAX5160MEUA+ - Analog Devices Inc./Maxim Integrated.

Datasheets

[Cylindrical Battery Holders.pdf](#)

Environmental Information

[Maxim Integrated REACH.pdf](#)

[Maxim Integrated RoHS Cert.pdf](#)

Part Numbering Guide

Application Notes

Reduce the Chances of Human Error: Part 1, Power a.pdf

Where Is Ground?.pdf

Stack References for Higher Adjustable Voltages fr.pdf

Customers Also Interested in

Recommended Products



MAX5161MEZT+T

Analog Devices Inc./Maxim Integrated
IC DGT POT 100KOHM 32TP
TSOT23-6



MAX5161LEZT

Analog Devices Inc./Maxim Integrated
MAX5161 LOW-POWER DIGIPOT



MAX5161MEZT

Analog Devices Inc./Maxim Integrated
MAX5161 LOW-POWER DIGIPOT



MAX5161LEZT-T

Analog Devices / Maxim Integrated



MAX515EPA+

Analog Devices Inc./Maxim Integrated
IC DAC 10BIT V-OUT 8DIP



MAX5160LEUA

Analog Devices Inc./Maxim Integrated
IC DGT POT 50KOHM 32TAP
8UMAX



MAX5161NEZT

Analog Devices Inc./Maxim Integrated
MAX5161 LOW-POWER DIGIPOT



MAX5160LEUA-T

Analog Devices Inc./Maxim Integrated
MAX5160 LOW-POWER DIGIPOT



MAX5160LEUA+

Analog Devices Inc./Maxim Integrated
IC DGT POT 50KOHM 32TAP
8UMAX



MAX5160MEUA

Analog Devices Inc./Maxim Integrated
IC DGT POT 100KOHM 32TAP
8UMAX



MAX515ESA+T

Analog Devices Inc./Maxim Integrated
IC DAC 10BIT V-OUT 8SOIC



MAX5161MEZT-T

Analog Devices Inc./Maxim Integrated
MAX5161 LOW-POWER DIGIPOT



MAX5160NEUA+

Analog Devices Inc./Maxim Integrated
IC DGT POT 200KOHM 32TAP
8UMAX



MAX5161LEZT+T

Analog Devices Inc./Maxim Integrated
IC DGT POT 50KOHM 32TAP
TSOT23-6



MAX5160MEUA+T

Analog Devices Inc./Maxim Integrated
IC DGT POT 100KOHM 32TAP
8UMAX



MAX515CSA+T

Analog Devices Inc./Maxim Integrated
IC DAC 10BIT V-OUT 8SOIC



MAX515ESA

Analog Devices Inc./Maxim Integrated
IC DAC 10BIT V-OUT 8SOIC



MAX5160LEUA+T

Analog Devices Inc./Maxim Integrated
IC DGT POT 50KOHM 32TAP
8UMAX

Shipment

Delivery Time

In-stock items can be shipped within 24 hours. Some parts will be arranged for delivery within 1-2 days from the date all items arrive at our warehouse. And Allelco ships order once a day at about 17:00, except Sunday. Once the goods are shipped, the estimated delivery time depends on the shipping methods and Delivery destination. The table below shows are the logistic time for some common countries.

Delivery Cost

- > Use your express account for shipment if you have one.
 - > Use our account for the shipment. Refer to the table below for the approximate charges.
- (Different time frame / countries / package size has different price.)

Delivery Method

- > Global Common Shipment by DHL / UPS / FedEx / TNT / EMS / SF we support.
- > Others more shipping ways, please get in touch with your customer manager.

Common Countries Logistic Time Reference

Region	Country	Logistic Time(Day)
America	United States	5
	Brazil	7
Europe	Germany	5
	United Kingdom	4
	Italy	5
Oceania	Australia	6
	New Zealand	7
Asia	India	6
	Japan	7
Middle East	Israel	6

DHL & FedEx Shipment Charges Reference

Shipment charges(KG)	Reference DHL(USD\$)
0.00kg-1.00kg	USD\$60.00
1.00kg-2.00kg	USD\$70.00
2.00kg-3.00kg	USD\$80.00

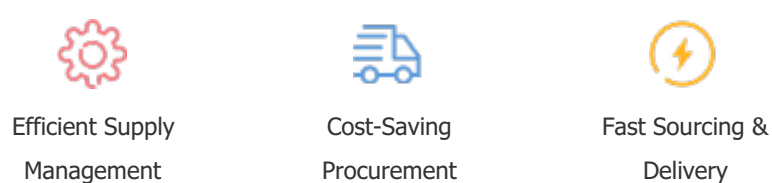
Note: The above table is for reference only. There may have some data bias for the uncontrollable factors.
Contact us if you have any questions.

Payment Support

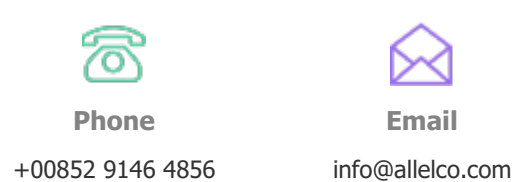
The payment method can be chosen from the methods shown below:
Wire Transfer (T/T, Bank Transfer), Western Union, Credit card,
PayPal.



Your Faithful Supply Chain Partner -



Contact us if you have any questions.



Certifications & Memberships



View More