

Image may be representation.
See specifications for product details.



L9352B-TR-LF

Manufacturer Part Number	L9352B-TR-LF
Manufacturer	STMicroelectronics
Allelco Part Number	32D-L9352B-TR-LF
ECAD Model	PCB Symbol, Footprint & 3D Model
Parts Description	IC PWR SWITCH N-CHAN 1:1 PWRSO36
Package	36-PowerBSSOP (0.433', 11.00mm Width)
Data sheet	L9352B.pdf
RoHs Status	ROHS3 Compliant

Get a Quote

L9352B-TR-LF - STMicroelectronics.New Original in Stock. Download Linear Technology L9352B-TR-LF datasheet/specifications on AllelcoElec.com.
Request a quote for L9352B-TR-LF, please send us email: info@allelco.com

Specifications

L9352B-TR-LF Tech Specifications

L9352B-TR-LF - STMicroelectronics technical specifications, attributes, parameters

Product Attribute	Attribute Value	Product Attribute	Attribute Value
Manufacturer	STMicroelectronics	Output Configuration	Low Side
Voltage - Supply (Vcc/Vdd)	4.5V ~ 5.5V	Operating Temperature	-40°C ~ 150°C (TJ)
Voltage - Load	4.8V ~ 18V	Number of Outputs	4
Switch Type	General Purpose	Mounting Type	Surface Mount
Supplier Device Package	PowerSO-36, Bottom Pad	Interface	-
Series	-	Input Type	Non-Inverting
Rds On (Typ)	200mOhm	Features	Status Flag
Ratio - Input:Output	1:1	Fault Protection	Open Load Detect, Over Temperature
Package / Case	36-PowerBSSOP (0.433', 11.00mm Width)	Current - Output (Max)	2.5A, 5A
Package	Tape & Reel (TR)	Base Product Number	L9352
Output Type	N-Channel		

Parts with Similar Specifications

The three parts on the right have similar specifications to STMicroelectronics L9352B-TR-LF

Product Attribute				
Part Number	L9352B-TR-LF	L9362013TR	L9347LF-TR	L9374LF
Manufacturer	STMicroelectronics	STMicroelectronics	STMicroelectronics	STMicroelectronics
Package	Tape & Reel (TR)	Tape & Reel (TR)	Tape & Reel (TR)	Tube
Package / Case	36-PowerBSSOP (0.433', 11.00mm Width)	36-PowerBSSOP (0.433', 11.00mm Width)	36-PowerBSSOP (0.433', 11.00mm Width)	36-PowerBSSOP (0.433", 11.00mm Width)
Current - Output (Max)	2.5A, 5A	3A	2.5A, 5A	1.8A
Voltage - Load	4.8V ~ 18V	4.5V ~ 5.5V	4.8V ~ 18V	-
Voltage - Supply (Vcc/Vdd)	4.5V ~ 5.5V	-	Not Required	5.2V ~ 20V
Series	-	-	-	-
Ratio - Input:Output	1:1	1:1	1:1	1:4
Features	Status Flag	-	Status Flag	-
Output Type	N-Channel	N-Channel	N-Channel	N-Channel
Interface	-	SPI	On/Off	SPI
Number of Outputs	4	4	4	4
Fault Protection	Open Load Detect, Over Temperature	Open Load Detect, Over Temperature	Open Load Detect, Over Temperature	Current Limiting (Fixed), Open Load Detect, Over Temperature, Over Voltage
Supplier Device Package	PowerSO-36, Bottom Pad	PowerSO-36, Bottom Pad	PowerSO-36, Bottom Pad	PowerSO-36, Bottom Pad
Base Product Number	L9352	L9362013	L9347	L9374
Switch Type	General Purpose	General Purpose	General Purpose	General Purpose
Output Configuration	Low Side	Low Side	Low Side	Low Side
Mounting Type	Surface Mount	Surface Mount	Surface Mount	Surface Mount
Rds On (Typ)	200mOhm	250mOhm	-	140mOhm, 250mOhm
Operating Temperature	-40°C ~ 150°C (TJ)	-40°C ~ 150°C (TJ)	-40°C ~ 150°C (TJ)	-40°C ~ 125°C (TA)
Input Type	Non-Inverting	-	Non-Inverting	Non-Inverting

L9352B-TR-LF Datasheet PDF

Download L9352B-TR-LF pdf datasheets and STMicroelectronics documentation for L9352B-TR-LF - STMicroelectronics.

HTML Datasheet



Customers Also Interested in

Recommended Products



L9362D13TR
STMicroelectronics



L9352B
STMicroelectronics



L9362D013TR
STMicroelectronics



L9351/DE5252
STMicroelectronics



L9362013TR
STMicroelectronics
IC PWR DRIVER N-CHAN 1:1
PWR5036



L9369-TR
STMicroelectronics
ELECTRONIC DUAL H-BRIDGE PRE-
DRI



L9375LF
STMicroelectronics



L9347LF-TR
STMicroelectronics
IC PWR DRIVER N-CHAN 1:1
PWR5036



L9374LF
STMicroelectronics
IC PWR TRAIN & SAFETY PWR5036



L9349TR-LF
STMicroelectronics
IC PWR SWITCH N-CHAN 1:1
PWR5020



L9338MD/TR
STMicroelectronics
IC PWR DRIVER N-CHAN 1:1 20SOIC



L9339-TR
STMicroelectronics
IC PWR DRIVER N-CHAN 1:1 20SOIC



L9374TR
STMicroelectronics



L9352B-LF
STMicroelectronics
IC PWR SWITCH N-CHAN 1:1
PWR5036



L9351EIR4C



L9374TRLF
STMicroelectronics
IC PWR DRIVER N-CHAN 1:4
PWR5036



L9346PD
STMicroelectronics



L934ID
KINGB

Shipment

Delivery Time

In-stock items can be shipped within 24 hours. Some parts will be arranged for delivery within 1-2 days from the date all items arrive at our warehouse. And Allelco ships order once a day at about 17:00, except Sunday. Once the goods are shipped, the estimated delivery time depends on the shipping methods and Delivery destination. The table below shows are the logistic time for some common countries.

Delivery Cost

> Use your express account for shipment if you have one.

> Use our account for the shipment. Refer to the table below for the approximate charges.

(Different time frame / countries / package size has different price.)

Delivery Method

> Global Common Shipment by DHL / UPS / FedEx / TNT / EMS / SF we support.

> Others more shipping ways, please get in touch with your customer manager.

Common Countries Logistic Time Reference		
Region	Country	Logistic Time(Day)
America	United States	5
	Brazil	7
Europe	Germany	5
	United Kingdom	4
	Italy	5
Oceania	Australia	6
	New Zealand	7
Asia	India	6
	Japan	7
Middle East	Israel	6

DHL & FedEx Shipment Charges Reference	
Shipment charges(KG)	Reference DHL(USD\$)
0.00kg-1.00kg	USD\$60.00
1.00kg-2.00kg	USD\$70.00
2.00kg-3.00kg	USD\$80.00

Note: The above table is for reference only. There may have some data bias for the uncontrollable factors.

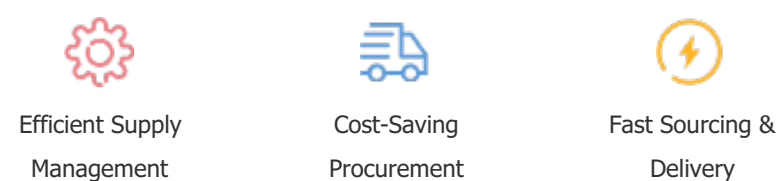
Contact us if you have any questions.

Payment Support

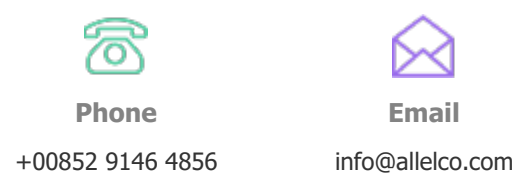
The payment method can be chosen from the methods shown below:
Wire Transfer (T/T, Bank Transfer), Western Union, Credit card,
PayPal.



Your Faithful Supply Chain Partner -



Contact us if you have any questions.



+00852 9146 4856

info@allelco.com

Certifications & Memberships



View More



Contact us

Address: Flat/Rm C 13/F Harvard Commercial Building 105-111 Thomson Road, Wan Chai, Hong Kong

Phone: +00852 9146 4856

Fax: +00852 3010 8510

Email: info@Allelco.com

Copyright © 2012-2023 AllelcoElec.com. All rights reserved.