



Image may be representation.
See specifications for product details.



OP27GJZ

Manufacturer Part Number	OP27GJZ
Manufacturer	Analog Devices, Inc.
Allelco Part Number	32D-OP27GJZ
ECAD Model	Request Free CAD Models
Parts Description	IC OPAMP GP 1 CIRCUIT TO99-8
Package	TO-99-8 Metal Can
Data sheet	OP27.pdf
RoHs Status	ROHS3 Compliant

Get a Quote

OP27GJZ - Analog Devices Inc..New Original in Stock. Download Linear Technology OP27GJZ datasheet/specifications on AllelcoElec.com.
Request a quote for OP27GJZ, please send us email: info@allelco.com

Specifications

OP27GJZ Tech Specifications
OP27GJZ - Analog Devices Inc. technical specifications, attributes, parameters

Product Attribute	Attribute Value	Product Attribute	Attribute Value
Manufacturer	Analog Devices, Inc.	Output Type	-
Voltage - Supply Span (Min)	8 V	Operating Temperature	-40°C ~ 85°C
Voltage - Supply Span (Max)	36 V	Number of Circuits	1
Voltage - Input Offset	30 µV	Mounting Type	Through Hole
Supplier Device Package	TO-99-8	Gain Bandwidth Product	8 MHz
Slew Rate	2.8V/µs	Current - Supply	-
Series	-	Current - Input Bias	15 nA
Package / Case	TO-99-8 Metal Can	Base Product Number	OP27
Package	Bulk	Amplifier Type	General Purpose

Parts with Similar Specifications

The three parts on the right have similar specifications to Analog Devices Inc. OP27GJZ

Product Attribute				
Part Number	OP27GJZ	OP27GS	OP27GSZ-REEL7	OP27GPZ
Manufacturer	Analog Devices Inc.	Analog Devices Inc.	Analog Devices Inc.	Analog Devices Inc.
Mounting Type	Through Hole	Surface Mount	Surface Mount	Through Hole
Voltage - Input Offset	30 µV	30 µV	30 µV	30 µV
Number of Circuits	1	1	1	1
Package	Bulk	Tube	Tape & Reel (TR)	Tube
Series	-	-	-	-
Voltage - Supply Span (Min)	8 V	44 V	8 V	8 V
Operating Temperature	-40°C ~ 85°C	-40°C ~ 85°C	-40°C ~ 85°C	-40°C ~ 85°C
Current - Input Bias	15 nA	15 nA	15 nA	15 nA
Package / Case	TO-99-8 Metal Can	8-SOIC (0.154", 3.90mm Width)	8-SOIC (0.154", 3.90mm Width)	8-DIP (0.300", 7.62mm)
Base Product Number	OP27	-	OP27	OP27
Amplifier Type	General Purpose	General Purpose	General Purpose	General Purpose
Voltage - Supply Span (Max)	36 V	44 V	36 V	36 V
Gain Bandwidth Product	8 MHz	8 MHz	8 MHz	8 MHz
Current - Supply	-	-	-	-
Output Type	-	-	-	-
Supplier Device Package	TO-99-8	8-SOIC	8-SOIC	8-PDIP
Slew Rate	2.8V/µs	2.8V/µs	2.8V/µs	2.8V/µs

OP27GJZ Datasheet PDF

Download OP27GJZ pdf datasheets and Analog Devices Inc. documentation for OP27GJZ - Analog Devices Inc..

Datasheets

OP27.pdf

PCN Assembly/Origin

Mult Dev Test Site Rev 29/Oct/2017.pdf

Customers Also Interested in

Recommended Products



OP27GS

Analog Devices Inc.
IC OPAMP GP 1 CIRCUIT 8SOIC



OP27FQ

ADI (Analog Devices, Inc.)



OP27GSZ-REEL7

Analog Devices Inc.
IC OPAMP GP 1 CIRCUIT 8SOIC



OP27ESZ

ADI (Analog Devices, Inc.)



OP27EN

ADI (Analog Devices, Inc.)



OP27GPZ

Analog Devices Inc.
IC OPAMP GP 1 CIRCUIT 8DIP



OP27GP

Analog Devices Inc.
IC OPAMP GP 1 CIRCUIT 8DIP



OP27EZ

Analog Devices Inc.
IC OPAMP GP 1 CIRCUIT 8CERDIP



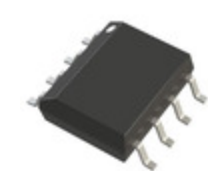
OP27EP

Analog Devices Inc.
IC OPAMP GP 1 CIRCUIT 8DIP



OP27FPZ

ADI (Analog Devices, Inc.)



OP27GS-REEL

Analog Devices Inc.
IC OPAMP GP 1 CIRCUIT 8SOIC



OP27FP

Analog Devices Inc.
IC OPAMP GP 1 CIRCUIT 8DIP



OP27GSZ

Analog Devices Inc.
IC OPAMP GP 1 CIRCUIT 8SOIC



OP27GSZ-REEL

Analog Devices Inc.
IC OPAMP GP 1 CIRCUIT 8SOIC



OP27GN

ADI (Analog Devices, Inc.)



OP27EN8

Linear Technology
OP27EN8 - L N, HI Speed Prec Op



OP27GS8#PBF

Analog Devices Inc.
IC OPAMP GP 1 CIRCUIT 8SO



OP27EPZ

Analog Devices Inc.
IC OPAMP GP 1 CIRCUIT 8DIP

Shipment

Delivery Time

In-stock items can be shipped within 24 hours. Some parts will be arranged for delivery within 1-2 days from the date all items arrive at our warehouse. And Allelco ships order once a day at about 17:00, except Sunday. Once the goods are shipped, the estimated delivery time depends on the shipping methods and Delivery destination. The table below shows are the logistic time for some common countries.

Delivery Cost

> Use your express account for shipment if you have one.

> Use our account for the shipment. Refer to the table below for the approximate charges.

(Different time frame / countries / package size has different price.)

Delivery Method

> Global Common Shipment by DHL / UPS / FedEx / TNT / EMS / SF we support.

> Others more shipping ways, please get in touch with your customer manager.

Common Countries Logistic Time Reference		
Region	Country	Logistic Time(Day)
America	United States	5
	Brazil	7
Europe	Germany	5
	United Kingdom	4
	Italy	5
Oceania	Australia	6
	New Zealand	7
Asia	India	6
	Japan	7
Middle East	Israel	6

DHL & FedEx Shipment Charges Reference	
Shipment charges(KG)	Reference DHL(USD\$)
0.00kg-1.00kg	USD\$60.00
1.00kg-2.00kg	USD\$70.00
2.00kg-3.00kg	USD\$80.00

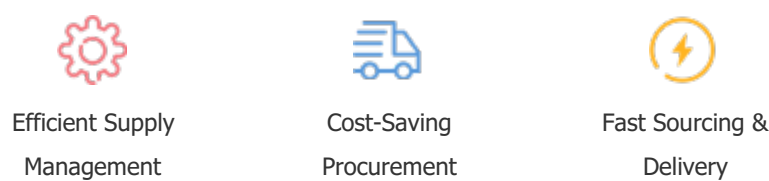
Note: The above table is for reference only. There may have some data bias for the uncontrollable factors.
Contact us if you have any questions.

Payment Support

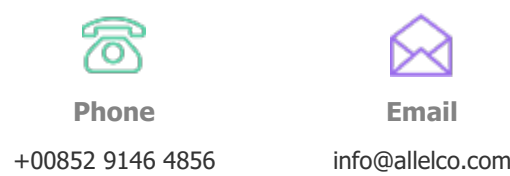
The payment method can be chosen from the methods shown below:
Wire Transfer (T/T, Bank Transfer), Western Union, Credit card, PayPal.



Your Faithful Supply Chain Partner -



Contact us if you have any questions.



Certifications & Memberships



[View More](#)