

Image may be representation.
See specifications for product details.



MAX4420CPA

Manufacturer Part Number	MAX4420CPA
Manufacturer	Maxim Integrated
Allelco Part Number	32D-MAX4420CPA
ECAD Model	Request Free CAD Models
Parts Description	IC GATE DRVR LOW-SIDE 8DIP
Package	8-DIP (0.300', 7.62mm)
Data sheet	Cylindrical Battery Holders.pdf

Get a Quote

MAX4420CPA - Analog Devices Inc./Maxim Integrated. New Original in Stock. Download Linear Technology MAX4420CPA datasheet/specifications on AllelcoElec.com. Request a quote for MAX4420CPA, please send us email: info@allelco.com

Specifications

MAX4420CPA Tech Specifications
MAX4420CPA - Analog Devices Inc./Maxim Integrated technical specifications, attributes, parameters

Product Attribute	Attribute Value	Product Attribute	Attribute Value
Manufacturer	Maxim Integrated	Mounting Type	Through Hole
Voltage - Supply	4.5V ~ 18V	Logic Voltage - VIL, VIH	0.8V, 2.4V
Supplier Device Package	8-PDIP	Input Type	Non-Inverting
Series	-	Gate Type	N-Channel, P-Channel MOSFET
Rise / Fall Time (Typ)	25ns, 25ns	Driven Configuration	Low-Side
Package / Case	8-DIP (0.300', 7.62mm)	Current - Peak Output (Source, Sink)	6A, 6A
Package	Tube	Channel Type	Single
Operating Temperature	0°C ~ 70°C (TA)	Base Product Number	MAX4420
Number of Drivers	1		

Parts with Similar Specifications

The three parts on the right have similar specifications to Analog Devices Inc./Maxim Integrated MAX4420CPA

Product Attribute				
Part Number	MAX4420CPA	MAX4420CSA+T	MAX4420EPA	MAX4420CPA+
Manufacturer	Analog Devices Inc./Maxim Integrated	Analog Devices Inc./Maxim Integrated	Analog Devices Inc./Maxim Integrated	Analog Devices Inc./Maxim Integrated
Supplier Device Package	8-PDIP	8-SOIC	8-PDIP	8-PDIP
Series	-	-	-	-
Package / Case	8-DIP (0.300', 7.62mm)	8-SOIC (0.154', 3.90mm Width)	8-DIP (0.300', 7.62mm)	8-DIP (0.300', 7.62mm)
Channel Type	Single	Single	Single	Single
Input Type	Non-Inverting	Non-Inverting	Non-Inverting	Non-Inverting
Current - Peak Output (Source, Sink)	6A, 6A	6A, 6A	6A, 6A	6A, 6A
Base Product Number	MAX4420	MAX4420	MAX4420	MAX4420
Rise / Fall Time (Typ)	25ns, 25ns	25ns, 25ns	25ns, 25ns	25ns, 25ns
Gate Type	N-Channel, P-Channel MOSFET	N-Channel, P-Channel MOSFET	N-Channel, P-Channel MOSFET	N-Channel, P-Channel MOSFET
Driven Configuration	Low-Side	Low-Side	Low-Side	Low-Side
Number of Drivers	1	1	1	1
Package	Tube	Tape & Reel (TR)	Tube	Tube
Voltage - Supply	4.5V ~ 18V	4.5V ~ 18V	4.5V ~ 18V	4.5V ~ 18V
Mounting Type	Through Hole	Surface Mount	Through Hole	Through Hole
Operating Temperature	0°C ~ 70°C (TA)	0°C ~ 70°C (TA)	-40°C ~ 85°C (TA)	0°C ~ 70°C (TA)
Logic Voltage - VIL, VIH	0.8V, 2.4V	0.8V, 2.4V	0.8V, 2.4V	0.8V, 2.4V

MAX4420CPA Datasheet PDF

Download MAX4420CPA pdf datasheets and Analog Devices Inc./Maxim Integrated documentation for MAX4420CPA - Analog Devices Inc./Maxim Integrated.

Datasheets

Cylindrical Battery Holders.pdf

Environmental Information

Maxim Integrated REACH.pdf

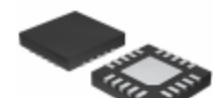
Maxim Integrated RoHS Cert.pdf

Part Numbering Guide

Part Numbering System.pdf

Customers Also Interested in

Recommended Products

**MAX4412EXK+TG21**Analog Devices Inc./Maxim Integrated
IC OPAMP VFB 1 CIRCUIT SC70-5**MAX4420CSA+T**Analog Devices Inc./Maxim Integrated
IC GATE DRVR LOW-SIDE 8SOIC**MAX4416EUA+T**Analog Devices Inc./Maxim Integrated
IC VOLTAGE FEEDBACK 2 CIRC 8UMAX**MAX4412EXK+T**Analog Devices Inc./Maxim Integrated
IC OPAMP VFB 1 CIRCUIT SC70-5**MAX4420EPA**Analog Devices Inc./Maxim Integrated
IC GATE DRVR LOW-SIDE 8DIP**MAX4413EKA+T**Analog Devices Inc./Maxim Integrated
IC OPAMP VFB 2 CIRCUIT SOT23-8**MAX4414ESA**Analog Devices Inc./Maxim Integrated
IC VOLTAGE FEEDBACK 1 CIRC 8SOIC**MAX441CPP**Analog Devices Inc./Maxim Integrated
HIGH-SPEED VIDEO MUX/AMPLIFIER**MAX4418EUD+T**Analog Devices Inc./Maxim Integrated
IC OPAMP VFB 4 CIRCUIT 14TSSOP**MAX4420CPA+**Analog Devices Inc./Maxim Integrated
IC GATE DRVR LOW-SIDE 8DIP**MAX44211ETP+**Analog Devices Inc./Maxim Integrated
IC DRIVER 1/0 20TQFN**MAX4420ESA+**Analog Devices Inc./Maxim Integrated
IC GATE DRVR LOW-SIDE 8SOIC**MAX4420ESA+T**Analog Devices Inc./Maxim Integrated
IC GATE DRVR LOW-SIDE 8SOIC**MAX4417EUA+T**Analog Devices Inc./Maxim Integrated
IC VOLTAGE FEEDBACK 2 CIRC 8UMAX**MAX4420CSA**Analog Devices Inc./Maxim Integrated
IC GATE DRVR LOW-SIDE 8SOIC**MAX4420CSA-T**Analog Devices Inc./Maxim Integrated
6A SINGLE MOSFET DRIVER**MAX4412EXK-T**Analog Devices Inc./Maxim Integrated
IC OPAMP VFB 1 CIRCUIT SC70-5**MAX4420ESA**Analog Devices Inc./Maxim Integrated
IC GATE DRVR LOW-SIDE 8SOIC

Shipment

Delivery Time

In-stock items can be shipped within 24 hours. Some parts will be arranged for delivery within 1-2 days from the date all items arrive at our warehouse. And Allelco ships order once a day at about 17:00, except Sunday. Once the goods are shipped, the estimated delivery time depends on the shipping methods and Delivery destination. The table below shows are the logistic time for some common countries.

Delivery Cost

> Use your express account for shipment if you have one.

> Use our account for the shipment. Refer to the table below for the approximate charges.

(Different time frame / countries / package size has different price.)

Delivery Method

> Global Common Shipment by DHL / UPS / FedEx / TNT / EMS / SF we support.

> Others more shipping ways, please get in touch with your customer manager.

Common Countries Logistic Time Reference

Region	Country	Logistic Time(Day)
America	United States	5
	Brazil	7
Europe	Germany	5
	United Kingdom	4
	Italy	5
Oceania	Australia	6
	New Zealand	7
Asia	India	6
	Japan	7
Middle East	Israel	6

DHL & FedEx Shipment Charges Reference

Shipment charges(KG)	Reference DHL(USD\$)
0.00kg-1.00kg	USD\$60.00
1.00kg-2.00kg	USD\$70.00
2.00kg-3.00kg	USD\$80.00

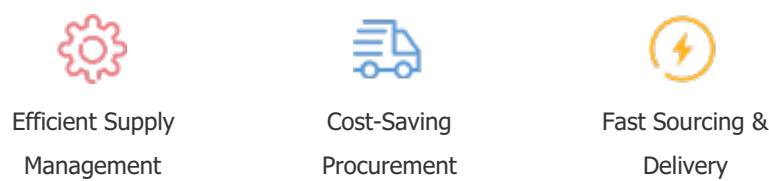
Note: The above table is for reference only. There may have some data bias for the uncontrollable factors.
Contact us if you have any questions.

Payment Support

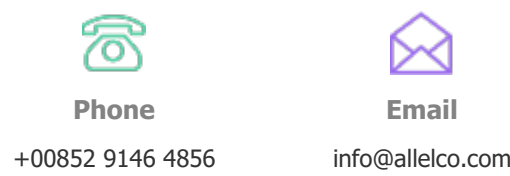
The payment method can be chosen from the methods shown below:
Wire Transfer (T/T, Bank Transfer), Western Union, Credit card, PayPal.



Your Faithful Supply Chain Partner -



Contact us if you have any questions.



Certifications & Memberships



[View More](#)



Contact us

Address: Flat/Rm C 13/F Harvard Commercial Building 105-111 Thomson Road, Wan Chai, Hong Kong

Phone: +00852 9146 4856

Fax: +00852 3010 8510

Email: info@Allelco.com

Copyright © 2012-2023 AllelcoElec.com. All rights reserved.