

Image may be representation.  
See specifications for product details.



## ESDA14V2SC6

Manufacturer Part Number	<b>ESDA14V2SC6</b>
Manufacturer	<b>STMicroelectronics</b>
Allelco Part Number	32D-ESDA14V2SC6
ECAD Model	PCB Symbol, Footprint & 3D Model
Parts Description	TVS DIODE 12VWM SOT23-6
Package	SOT-23-6
Data sheet	<b>Cylindrical Battery Holders.pdf</b>
RoHs Status	ROHS3 Compliant

**Get a Quote**

ESDA14V2SC6 - STMicroelectronics.New Original in Stock. Download Linear Technology ESDA14V2SC6 datasheet/specifications on AllelcoElec.com.  
Request a quote for ESDA14V2SC6, please send us email: [info@allelco.com](mailto:info@allelco.com)

### Specifications

ESDA14V2SC6 Tech Specifications

ESDA14V2SC6 - STMicroelectronics technical specifications, attributes, parameters

Product Attribute	Attribute Value	Product Attribute	Attribute Value
Manufacturer	STMicroelectronics	Power - Peak Pulse	300W
Voltage - Reverse Standoff (Typ)	12V	Package / Case	SOT-23-6
Voltage - Clamping (Max) @ Ipp	-	Package	Tape & Reel (TR)
Voltage - Breakdown (Min)	14.2V	Operating Temperature	-40°C ~ 125°C (TA)
Unidirectional Channels	4	Mounting Type	Surface Mount
Type	Zener	Current - Peak Pulse (10/1000µs)	-
Supplier Device Package	SOT-23-6	Capacitance @ Frequency	-
Series	ESDA, TRANSIL™	Base Product Number	ESDA14V2
Power Line Protection	No	Applications	General Purpose

### Parts with Similar Specifications

The three parts on the right have similar specifications to STMicroelectronics ESDA14V2SC6

Product Attribute				
Part Number	ESDA14V2SC6	ESDA18-1K	ESDA17P100-1U2M	ESDA19SC6
Manufacturer	STMicroelectronics	STMicroelectronics	STMicroelectronics	STMicroelectronics
Operating Temperature	-40°C ~ 125°C (TA)	-40°C ~ 150°C (TJ)	-55°C ~ 150°C (TJ)	-40°C ~ 125°C (TA)
Package / Case	SOT-23-6	SC-79, SOD-523	6-UFDN Exposed Pad	SOT-23-6
Voltage - Breakdown (Min)	14.2V	18V	15.7V	19V
Applications	General Purpose	General Purpose	General Purpose	General Purpose
Power Line Protection	No	No	No	No
Voltage - Clamping (Max) @ Ipp	-	34V	30V	-
Unidirectional Channels	4	1	1	4
Mounting Type	Surface Mount	Surface Mount	Surface Mount	Surface Mount
Supplier Device Package	SOT-23-6	SOD-523	6-µQFN (1.8x2)	SOT-23-6
Series	ESDA, TRANSIL™	ESDA, TRANSIL™	ESDA	ESDA, TRANSIL™
Package	Tape & Reel (TR)	Tape & Reel (TR)	Tape & Reel (TR)	Tape & Reel (TR)
Base Product Number	ESDA14V2	ESDA18	ESDA17	ESDA19
Type	Zener	Zener	Zener	Zener
Power - Peak Pulse	300W	400W	4800W (4.8kW)	300W
Voltage - Reverse Standoff (Typ)	12V	15V	15V (Max)	15V
Capacitance @ Frequency	-	105pF @ 1MHz	1200pF @ 1MHz	-
Current - Peak Pulse (10/1000µs)	-	12A (8/20µs)	160A (8/20µs)	-

### ESDA14V2SC6 Datasheet PDF

Download ESDA14V2SC6 pdf datasheets and STMicroelectronics documentation for ESDA14V2SC6 - STMicroelectronics.

#### HTML Datasheet

Cylindrical Battery Holders.pdf

#### Other Related Documents

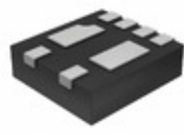
Cylindrical Battery Holders.pdf

### Customers Also Interested in

#### Recommended Products

**ESDA18-1K**STMicroelectronics  
TVS DIODE 15VWM 34VC SOD523**ESDA19-5CS6**

Semtech

**ESDA17P100-1U2M**STMicroelectronics  
TVS DIODE 15VWM 30VC 6UQFN**ESDA19SC6**STMicroelectronics  
TVS DIODE 15VWM SOT23-6**ESDA17SC6**STMicroelectronics  
TVS DIODE 14VWM SOT23-6**ESDA17P50-1U1M**STMicroelectronics  
TVS DIODE 15VWM 26.5VC 1610**ESDA14V2L**STMicroelectronics  
TVS DIODE 12VWM SOT23-3**ESDA14V2SC5Y**STMicroelectronics  
TVS DIODE 12VWM 35VC SOT23-5**ESDA18-1F2**STMicroelectronics  
TVS DIODE 10VWM 20VC 4FLIPCHIP

NO PICTURE



life.augmented

**ESDA14V2LY**STMicroelectronics  
TVS DIODE 12VWM 21VC SOT23-3

life.augmented



NO PICTURE



life.augmented

**ESDA17-5SC6**STMicroelectronics  
TVS DIODE 14VWM SOT23-6

life.augmented

**ESDA14V2SC5**STMicroelectronics  
TVS DIODE 12VWM SOT23-5L**ESDA14V2SC6(ES15)**

STMicroelectronics

**ESDA14V2L-E**

STM

**ESDA14V2L2**

STMicroelectronics

**ESDA14V2LD/C**

STMicroelectronics

## Shipment

### Delivery Time

In-stock items can be shipped within 24 hours. Some parts will be arranged for delivery within 1-2 days from the date all items arrive at our warehouse. And Allelco ships order once a day at about 17:00, except Sunday. Once the goods are shipped, the estimated delivery time depends on the shipping methods and Delivery destination. The table below shows are the logistic time for some common countries.

### Delivery Cost

> Use your express account for shipment if you have one.

> Use our account for the shipment. Refer to the table below for the approximate charges.

(Different time frame / countries / package size has different price.)

### Delivery Method

> Global Common Shipment by DHL / UPS / FedEx / TNT / EMS / SF we support.

> Others more shipping ways, please get in touch with your customer manager.

Common Countries Logistic Time Reference		
Region	Country	Logistic Time(Day)
America	United States	5
	Brazil	7
Europe	Germany	5
	United Kingdom	4
	Italy	5
Oceania	Australia	6
	New Zealand	7
Asia	India	6
	Japan	7
Middle East	Israel	6

DHL & FedEx Shipment Charges Reference	
Shipment charges(KG)	Reference DHL(USD\$)
0.00kg-1.00kg	USD\$60.00
1.00kg-2.00kg	USD\$70.00
2.00kg-3.00kg	USD\$80.00

Note: The above table is for reference only. There may have some data bias for the uncontrollable factors.

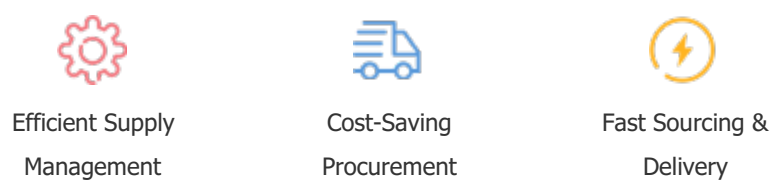
Contact us if you have any questions.

## Payment Support

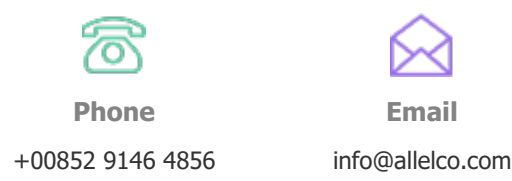
The payment method can be chosen from the methods shown below:  
Wire Transfer (T/T, Bank Transfer), Western Union, Credit card, PayPal.



## Your Faithful Supply Chain Partner -



Contact us if you have any questions.



## Certifications & Memberships



[View More](#)



WWW.ALLELCOELEC.COM

### Contact us

Address: Flat/Rm C 13/F Harvard Commercial Building 105-111 Thomson Road, Wan Chai, Hong Kong

Phone: +00852 9146 4856

Fax: +00852 3010 8510

Email: info@Allelco.com

Copyright © 2012-2023 AllelcoElec.com. All rights reserved.