



Image may be representation.
See specifications for product details.



NUCLEO-F072RB

| | |
|--------------------------|--|
| Manufacturer Part Number | NUCLEO-F072RB |
| Manufacturer | STMicroelectronics |
| Allelco Part Number | 32D-NUCLEO-F072RB |
| ECAD Model | Request Free CAD Models |
| Parts Description | NUCLEO-64 STM32F072RB EVAL BRD |
| Package | |
| Data sheet | NUCLEO-zzzzRx Data Brief.pdf STM32 Nucleo Boards Flyer.pdf STM32 Nucleo Getting Started Manual.pdf STM32 Nucleo User Manual.pdf |
| RoHs Status | ROHS3 Compliant |

Get a Quote

NUCLEO-F072RB - STMicroelectronics.New Original in Stock. Download Linear Technology NUCLEO-F072RB datasheet/specifications on AllelcoElec.com.
Request a quote for NUCLEO-F072RB, please send us email: info@allelco.com

Specifications

NUCLEO-F072RB Tech Specifications
NUCLEO-F072RB - STMicroelectronics technical specifications, attributes, parameters

| Product Attribute | Attribute Value | Product Attribute | Attribute Value |
|-----------------------------------|---|---------------------|------------------------------|
| Manufacturer | STMicroelectronics | Operating System | - |
| Utilized IC / Part | STM32F072RB, mbed-Enabled Development | Mounting Type | Fixed |
| Type | MCU 32-Bit | Interconnect System | Arduino R3 Shield, ST Morpho |
| Suggested Programming Environment | GNU GCC, IAR EW, Keil MDK, Mbed-Enabled | Core Processor | ARM® Cortex®-M0 |
| Series | STM32F0 | Contents | Board(s) |
| Platform | Nucleo-64 | Board Type | Evaluation Platform |
| Package | Bulk | Base Product Number | NUCLEO |

Parts with Similar Specifications

The three parts on the right have similar specifications to STMicroelectronics NUCLEO-F072RB

| Product Attribute | | | | |
|-----------------------------------|---|---|---|---|
| Part Number | NUCLEO-F072RB | NUCLEO-H743ZI | NUCLEO-L476RG | NUCLEO-F446ZE |
| Manufacturer | STMicroelectronics | STMicroelectronics | STMicroelectronics | STMicroelectronics |
| Core Processor | ARM® Cortex®-M0 | ARM® Cortex®-M7 | ARM® Cortex®-M4 | ARM® Cortex®-M4 |
| Utilized IC / Part | STM32F072RB, mbed-Enabled Development | STM32H743ZI, mbed-Enabled Development | STM32L476RG, mbed-Enabled Development | STM32F446ZE, mbed-Enabled Development |
| Series | STM32F0 | STM32H7 | STM32L4 | STM32F4 |
| Package | Bulk | Bulk | Box | Bulk |
| Base Product Number | NUCLEO | NUCLEO | NUCLEO | NUCLEO |
| Mounting Type | Fixed | Fixed | Fixed | Fixed |
| Operating System | - | - | - | - |
| Suggested Programming Environment | GNU GCC, IAR EW, Keil MDK, Mbed-Enabled | GNU GCC, IAR EW, Keil MDK, Mbed-Enabled | GNU GCC, IAR EW, Keil MDK, Mbed-Enabled | GNU GCC, IAR EW, Keil MDK, Mbed-Enabled |
| Interconnect System | Arduino R3 Shield, ST Morpho | Arduino R3 Shield, ST Morpho, ST Zio | Arduino R3 Shield, ST Morpho | Arduino R3 Shield, ST Morpho, ST Zio |
| Type | MCU 32-Bit | MCU 32-Bit | MCU 32-Bit | MCU 32-Bit |
| Contents | Board(s) | Board(s) | Board(s) | Board(s) |
| Board Type | Evaluation Platform | Evaluation Platform | Evaluation Platform | Evaluation Platform |
| Platform | Nucleo-64 | Nucleo-144 | Nucleo-64 | Nucleo-144 |

NUCLEO-F072RB Datasheet PDF

Download NUCLEO-F072RB pdf datasheets and STMicroelectronics documentation for NUCLEO-F072RB - STMicroelectronics.

Datasheets

[STM32 Nucleo Getting Started Manual.pdf](#)

HTML Datasheet

[NUCLEO-zzzzRx Data Brief.pdf](#)

[STM32 Nucleo Boards Flyer.pdf](#)

[STM32 Nucleo User Manual.pdf](#)

Customers Also Interested in

Recommended Products



NUCLEO-H743ZI

STMicroelectronics
NUCLEO-144 STM32H743ZI EVAL BRD



NUCLEO-L476RG

STMicroelectronics
NUCLEO-64 STM32L476RG DEV EVAL



NUCLEO-F446ZE

STMicroelectronics
NUCLEO-144 STM32F446ZE EVAL BRD



NUCLEO-F303K8

STMicroelectronics
NUCLEO-32 STM32F303K8 DEV EVAL



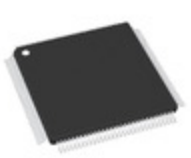
NUCLEO-F429ZI

STMicroelectronics
NUCLEO-144 STM32F429ZI EVAL BRD



NUCLEO-F334R8

STMicroelectronics
NUCLEO-64 STM32F334R8 DEV EVAL



nuvoTon



nuvoTon



NUC980DK71YC

Nuvoton Technology Corporation
IC MPU ARM9 128MB DDR-II MEMORYL

NUC980DK63YC

Nuvoton Technology Corporation
IC MPU ARM9 64MB DDR-II MEMORYLQ

NUC980DF71YC

Nuvoton Technology Corporation
IC MPU ARM9 128MB DDR-II MEMORYL

NUCLEO-L4R5ZI

STMicroelectronics
NUCLEO-144 STM32L4R5ZI EVAL BRD

NUC977DK62Y

Nuvoton Technology Corporation
ARM9 SOC (STACKED 64MB DDR2) 128

NUCLEO-F030R8

STMicroelectronics
NUCLEO-64 STM32F030R8 EVAL BRD



NUCLEO-L152RE

STMicroelectronics
NUCLEO-64 STM32L152RE EVAL BRD



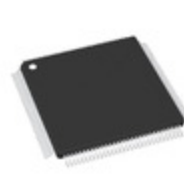
NUCLEO-G070RB

STMicroelectronics
NUCLEO-64 STM32G070 EVAL BRD



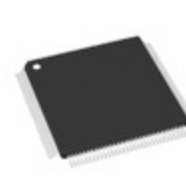
NUCLEO-F401RE

STMicroelectronics
NUCLEO-64 STM32F401RE EVAL BRD



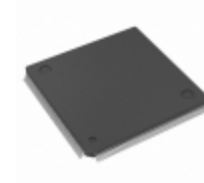
NUC980DK61YC

Nuvoton Technology Corporation
IC MPU ARM9 64MB DDR-II MEMORYLQ



NUC980DK61Y

Nuvoton Technology Corporation
IC MPU ARM9 64MB DDR-II MEMORYLQ



NUC980DF71Y

Nuvoton Technology Corporation
IC MPU ARM9 128MB DDR-II MEMORYL

Shipment

Delivery Time

In-stock items can be shipped within 24 hours. Some parts will be arranged for delivery within 1-2 days from the date all items arrive at our warehouse. And Allelco ships order once a day at about 17:00, except Sunday. Once the goods are shipped, the estimated delivery time depends on the shipping methods and Delivery destination. The table below shows are the logistic time for some common countries.

Delivery Cost

- > Use your express account for shipment if you have one.
 - > Use our account for the shipment. Refer to the table below for the approximate charges.
- (Different time frame / countries / package size has different price.)

Delivery Method

- > Global Common Shipment by DHL / UPS / FedEx / TNT / EMS / SF we support.
- > Others more shipping ways, please get in touch with your customer manager.

Common Countries Logistic Time Reference

| Region | Country | Logistic Time(Day) |
|-------------|----------------|--------------------|
| America | United States | 5 |
| | Brazil | 7 |
| Europe | Germany | 5 |
| | United Kingdom | 4 |
| | Italy | 5 |
| Oceania | Australia | 6 |
| | New Zealand | 7 |
| Asia | India | 6 |
| | Japan | 7 |
| Middle East | Israel | 6 |

DHL & FedEx Shipment Charges Reference

| Shipment charges(KG) | Reference DHL(USD\$) |
|----------------------|----------------------|
| 0.00kg-1.00kg | USD\$60.00 |
| 1.00kg-2.00kg | USD\$70.00 |
| 2.00kg-3.00kg | USD\$80.00 |

Note: The above table is for reference only. There may have some data bias for the uncontrollable factors.

Contact us if you have any questions.

Payment Support

The payment method can be chosen from the methods shown below:
Wire Transfer (T/T, Bank Transfer), Western Union, Credit card, PayPal.



Your Faithful Supply Chain Partner -

- Efficient Supply Management
- Cost-Saving Procurement
- Fast Sourcing & Delivery

Contact us if you have any questions.

- Phone
+00852 9146 4856
- Email
info@allelco.com

Certifications & Memberships



View More

Contact us

Address: Flat/Rm C 13/F Harvard Commercial Building 105-111 Thomson Road, Wan Chai, Hong Kong
Phone: +00852 9146 4856
Fax: +00852 3010 8510
Email: info@Allelco.com