

Image may be representation.
See specifications for product details.



NCV8664ST50T3G

Manufacturer Part Number **NCV8664ST50T3G**

Manufacturer **onsemi**

Allelco Part Number **32D-NCV8664ST50T3G**

ECAD Model PCB Symbol, Footprint & 3D Model

Parts Description **IC REG LINEAR 5V 150MA SOT223**

Package **TO-261-4, TO-261AA**

Data sheet **Cylindrical Battery Holders.pdf**

NCV8664.pdf

RoHs Status **ROHS3 Compliant**

Get a Quote

NCV8664ST50T3G - onsemi.New Original in Stock. Download Linear Technology NCV8664ST50T3G datasheet/specifications on AllelcoElec.com.
Request a quote for NCV8664ST50T3G, please send us email: info@allelco.com

Specifications

NCV8664ST50T3G Tech Specifications

NCV8664ST50T3G - onsemi technical specifications, attributes, parameters

Product Attribute	Attribute Value	Product Attribute	Attribute Value
Manufacturer	onsemi	Output Type	Fixed
Voltage Dropout (Max)	0.6V @ 150mA	Output Configuration	Positive
Voltage - Output (Min/Fixed)	5V	Operating Temperature	-40°C ~ 150°C
Voltage - Output (Max)	-	Number of Regulators	1
Voltage - Input (Max)	45V	Mounting Type	Surface Mount
Supplier Device Package	SOT-223 (TO-261)	Current - Supply (Max)	30 µA
Series	Automotive, AEC-Q100	Current - Quiescent (Iq)	29 µA
Protection Features	Over Current, Over Temperature, Reverse Polarity, Short Circuit	Current - Output	150mA
Package / Case	TO-261-4, TO-261AA	Control Features	-
Package	Tape & Reel (TR)	Base Product Number	NCV8664
PSRR	67dB (100Hz)		

Parts with Similar Specifications

The three parts on the right have similar specifications to onsemi NCV8664ST50T3G

Product Attribute				
Part Number	NCV8664ST50T3G	NCV8668ABPD50R2G	NCV8674DS120R4G	NCV8664CST50T3G
Manufacturer	onsemi	onsemi	onsemi	onsemi
Operating Temperature	-40°C ~ 150°C	-40°C ~ 150°C	-40°C ~ 150°C	-40°C ~ 150°C (TJ)
Base Product Number	NCV8664	NCV8668	NCV8674	NCV8664
Supplier Device Package	SOT-223 (TO-261)	8-SOIC-EP	D2PAK-3	SOT-223 (TO-261)
Mounting Type	Surface Mount	Surface Mount	Surface Mount	Surface Mount
Voltage - Output (Max)	-	-	-	-
Voltage Dropout (Max)	0.6V @ 150mA	0.6V @ 150mA	0.6V @ 350mA	0.6V @ 150mA
Protection Features	Over Current, Over Temperature, Reverse Polarity, Short Circuit	Over Current, Over Temperature, Reverse Polarity	Over Current, Over Temperature, Reverse Polarity, Short Circuit	Over Current, Over Temperature, Reverse Polarity, Short Circuit
Control Features	-	Enable, Reset, Watchdog	-	-
Current - Output	150mA	150mA	350mA	150mA
Package / Case	TO-261-4, TO-261AA	8-SOIC (0.154", 3.90mm Width) Exposed Pad	TO-263-3, D²Pak (2 Leads + Tab), TO-263AB	TO-261-4, TO-261AA
Voltage - Input (Max)	45V	40V	45V	45V
Output Type	Fixed	Fixed	Fixed	Fixed
Number of Regulators	1	1	1	1
Voltage - Output (Min/Fixed)	5V	5V	12V	5V
PSRR	67dB (100Hz)	60dB (100Hz)	67dB (100Hz)	67dB (100Hz)
Package	Tape & Reel (TR)	Tape & Reel (TR)	Tape & Reel (TR)	Tape & Reel (TR)
Output Configuration	Positive	Positive	Positive	Positive
Current - Quiescent (Iq)	29 µA	43 µA	42 µA	29 µA
Current - Supply (Max)	30 µA	44 µA	-	30 µA
Series	Automotive, AEC-Q100	Automotive, AEC-Q100	Automotive, AEC-Q100	Automotive, AEC-Q100

NCV8664ST50T3G Datasheet PDF

Download NCV8664ST50T3G pdf datasheets and onsemi documentation for NCV8664ST50T3G - onsemi.

Datasheets

Cylindrical Battery Holders.pdf

Environmental Information

onsemi RoHS.pdf

Material Declaration NCV8664ST50T3G.pdf

PCN Packaging

2.73KHz.pdf

PCN Assembly/Origin

2.73KHz.pdf

HTML Datasheet

NCV8664.pdf

Customers Also Interested in

Recommended Products



NCV8668ABPD50R2G
onsemi
IC REG LINEAR 5V 150MA 8SOIC



NCV8674DS120R4G
onsemi
IC REG LINEAR 12V 350MA D2PAK



NCV8664CST50T3G
onsemi
IC REG LINEAR 5V 150MA SOT223



NCV8664CST33T3G
onsemi
IC REG LINEAR 3.3V 150MA SOT223



NCV8664D50R2G
onsemi
IC REG LINEAR 5V 150MA 8SOIC



NCV8665D50R2G
onsemi
IC REG LINEAR 5V 150MA 8SOIC



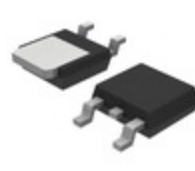
NCV8664CDT33RK
onsemi
IC REG LINEAR 3.3V 150MA DPAK



NCV8664DT33RK
onsemi
IC REG LINEAR 3.3V 150MA DPAK



NCV8664DT50RK
onsemi
IC REG LINEAR 5V 150MA DPAK



NCV8664CDT50RK
onsemi
IC REG LINEAR 5V 150MA DPAK



NCV8664ST33T3
onsemi
IC REG LINEAR 3.3V 150MA SOT223



NCV8668ABD150R2G
onsemi
IC REG LINEAR 5V 150MA 8SOIC



NCV8665DS50R4G
onsemi
IC REG LINEAR 5V 150MA D2PAK-5



NCV8664CST50T3G#Q



NCV8668ABPD33R2G
onsemi
IC REG LINEAR 3.3V 150MA 8SOIC



NCV8668ABD133R2G
onsemi
IC REG LINEAR 3.3V 150MA 8SOIC



NCV8674DS120G
onsemi
IC REG LINEAR 12V 350MA D2PAK



NCV8674DS50GG
AMI Semiconductor/onsemi

Shipment

Delivery Time

In-stock items can be shipped within 24 hours. Some parts will be arranged for delivery within 1-2 days from the date all items arrive at our warehouse. And Allelco ships order once a day at about 17:00, except Sunday. Once the goods are shipped, the estimated delivery time depends on the shipping methods and Delivery destination. The table below shows are the logistic time for some common countries.

Delivery Cost

- > Use your express account for shipment if you have one.
 - > Use our account for the shipment. Refer to the table below for the approximate charges.
- (Different time frame / countries / package size has different price.)

Delivery Method

- > Global Common Shipment by DHL / UPS / FedEx / TNT / EMS / SF we support.
- > Others more shipping ways, please get in touch with your customer manager.

Common Countries Logistic Time Reference		
Region	Country	Logistic Time(Day)
America	United States	5
	Brazil	7
Europe	Germany	5
	United Kingdom	4
	Italy	5
Oceania	Australia	6
	New Zealand	7
Asia	India	6
	Japan	7
Middle East	Israel	6

DHL & FedEx Shipment Charges Reference	
Shipment charges(KG)	Reference DHL(USD\$)
0.00kg-1.00kg	USD\$60.00
1.00kg-2.00kg	USD\$70.00
2.00kg-3.00kg	USD\$80.00

Note: The above table is for reference only. There may have some data bias for the uncontrollable factors. Contact us if you have any questions.

Payment Support

The payment method can be chosen from the methods shown below:
Wire Transfer (T/T, Bank Transfer), Western Union, Credit card, PayPal.



Your Faithful Supply Chain Partner -

- Efficient Supply Management
- Cost-Saving Procurement
- Fast Sourcing & Delivery

Contact us if you have any questions.

- Phone: +00852 9146 4856
- Email: info@allelco.com

Certifications & Memberships



View More

