

Image may be representation.
See specifications for product details.



MAX6301ESA+T

Manufacturer Part Number	MAX6301ESA+T
Manufacturer	Maxim Integrated
Allelco Part Number	32D-MAX6301ESA+T
ECAD Model	Request Free CAD Models
Parts Description	IC SUPERVISOR 1 CHANNEL 8SOIC
Package	8-SOIC (0.154", 3.90mm Width)
Data sheet	MAX6301-04.pdf
RoHs Status	ROHS3 Compliant

Get a Quote

MAX6301ESA+T - Analog Devices Inc./Maxim Integrated.New Original in Stock. Download Linear Technology MAX6301ESA+T datasheet/specifications on AllelcoElec.com. Request a quote for MAX6301ESA+T, please send us email: info@allelco.com

Specifications

MAX6301ESA+T Tech Specifications
MAX6301ESA+T - Analog Devices Inc./Maxim Integrated technical specifications, attributes, parameters

Product Attribute	Attribute Value	Product Attribute	Attribute Value
Manufacturer	Maxim Integrated	Package / Case	8-SOIC (0.154", 3.90mm Width)
Voltage - Threshold	Adjustable/Selectable	Package	Tape & Reel (TR)
Type	Simple Reset/Power-On Reset	Output	Open Drain or Open Collector
Supplier Device Package	8-SOIC	Operating Temperature	-40°C ~ 85°C (TA)
Series	-	Number of Voltages Monitored	1
Reset Timeout	2.8ms Minimum	Mounting Type	Surface Mount
Reset	Active Low	Base Product Number	MAX6301

Parts with Similar Specifications

The three parts on the right have similar specifications to Analog Devices Inc./Maxim Integrated MAX6301ESA+T

Product Attribute				
Part Number	MAX6301ESA+T	MAX6303CPA	MAX6302CUA	MAX6302EPA
Manufacturer	Analog Devices Inc./Maxim Integrated	Analog Devices Inc./Maxim Integrated	Analog Devices Inc./Maxim Integrated	Analog Devices Inc./Maxim Integrated
Mounting Type	Surface Mount	Through Hole	Surface Mount	Through Hole
Package	Tape & Reel (TR)	Tube	Tube	Tube
Output	Open Drain or Open Collector	Push-Pull, Totem Pole	Open Drain or Open Collector	Open Drain or Open Collector
Voltage - Threshold	Adjustable/Selectable	Adjustable/Selectable	Adjustable/Selectable	Adjustable/Selectable
Reset	Active Low	Active Low	Active High	Active High
Number of Voltages Monitored	1	1	1	1
Operating Temperature	-40°C ~ 85°C (TA)	0°C ~ 70°C (TA)	0°C ~ 70°C (TA)	-40°C ~ 85°C (TA)
Package / Case	8-SOIC (0.154", 3.90mm Width)	8-DIP (0.300", 7.62mm)	8-TSSOP, 8-MSOP (0.118", 3.00mm Width)	8-DIP (0.300", 7.62mm)
Series	-	-	-	-
Supplier Device Package	8-SOIC	8-PDIP	8-uMAX/uSOP	8-PDIP
Reset Timeout	2.8ms Minimum	2.8ms Minimum	2.8ms Minimum	2.8ms Minimum
Type	Simple Reset/Power-On Reset	Simple Reset/Power-On Reset	Simple Reset/Power-On Reset	Simple Reset/Power-On Reset
Base Product Number	MAX6301	MAX6303	MAX6302	MAX6302

MAX6301ESA+T Datasheet PDF

Download MAX6301ESA+T pdf datasheets and Analog Devices Inc./Maxim Integrated documentation for MAX6301ESA+T - Analog Devices Inc./Maxim Integrated.

Datasheets

[MAX6301-04.pdf](#)

Environmental Information

[Maxim Integrated REACH.pdf](#)

[Maxim Integrated RoHS Cert.pdf](#)

[Red Phosphorous Certificate.pdf](#)

Part Numbering Guide

[Part Numbering System.pdf](#)

Application Notes

[Watchdogs Improve System Reliability-How to Choose.pdf](#)

[Multiple Voltage Systems Need Supply-Voltage Seque.pdf](#)

Customers Also Interested in

Recommended Products

**MAX6303CPA**Analog Devices Inc./Maxim Integrated
IC SUPERVISOR 1 CHANNEL 8DIP**MAX6302CUA**Analog Devices Inc./Maxim Integrated
IC SUPERVISOR 1 CHANNEL 8UMAX**MAX6302EPA**Analog Devices Inc./Maxim Integrated
IC SUPERVISOR 1 CHANNEL 8DIP**MAX6301CUA+**Analog Devices Inc./Maxim Integrated
IC SUPERVISOR 1 CHANNEL 8UMAX**MAX6302EPA+**Analog Devices Inc./Maxim Integrated
IC SUPERVISOR 1 CHANNEL 8DIP**MAX6301ESA+**Analog Devices Inc./Maxim Integrated
IC SUPERVISOR 1 CHANNEL 8SOIC**MAX6301CSA**Analog Devices Inc./Maxim Integrated
IC SUPERVISOR 1 CHANNEL 8SOIC**MAX6301CUA**Analog Devices Inc./Maxim Integrated
IC SUPERVISOR 1 CHANNEL 8UMAX**MAX6302CUA+T**Analog Devices Inc./Maxim Integrated
IC SUPERVISOR 1 CHANNEL 8UMAX**MAX6301ESA**Analog Devices Inc./Maxim Integrated
IC SUPERVISOR 1 CHANNEL 8SOIC**MAX6302CUA+**Analog Devices Inc./Maxim Integrated
IC SUPERVISOR 1 CHANNEL 8UMAX**MAX6301EPA**Analog Devices Inc./Maxim Integrated
IC SUPERVISOR 1 CHANNEL 8DIP**MAX6302ESA+T**Analog Devices Inc./Maxim Integrated
IC SUPERVISOR 1 CHANNEL 8SOIC**MAX6301CSA+T**Analog Devices Inc./Maxim Integrated
IC SUPERVISOR 1 CHANNEL 8SOIC**MAX6303CSA+**Analog Devices Inc./Maxim Integrated
IC SUPERVISOR 1 CHANNEL 8SOIC**MAX6301CUA+T**Analog Devices Inc./Maxim Integrated
IC SUPERVISOR 1 CHANNEL 8UMAX**MAX6301CSA+**Analog Devices Inc./Maxim Integrated
IC SUPERVISOR 1 CHANNEL 8SOIC**MAX6303CSA**Analog Devices Inc./Maxim Integrated
IC SUPERVISOR 1 CHANNEL 8SOIC

Shipment

Delivery Time

In-stock items can be shipped within 24 hours. Some parts will be arranged for delivery within 1-2 days from the date all items arrive at our warehouse. And Allelco ships order once a day at about 17:00, except Sunday. Once the goods are shipped, the estimated delivery time depends on the shipping methods and Delivery destination. The table below shows are the logistic time for some common countries.

Delivery Cost

> Use your express account for shipment if you have one.

> Use our account for the shipment. Refer to the table below for the approximate charges.

(Different time frame / countries / package size has different price.)

Delivery Method

> Global Common Shipment by DHL / UPS / FedEx / TNT / EMS / SF we support.

> Others more shipping ways, please get in touch with your customer manager.

Common Countries Logistic Time Reference		
Region	Country	Logistic Time(Day)
America	United States	5
	Brazil	7
Europe	Germany	5
	United Kingdom	4
	Italy	5
Oceania	Australia	6
	New Zealand	7
Asia	India	6
	Japan	7
Middle East	Israel	6

DHL & FedEx Shipment Charges Reference	
Shipment charges(KG)	Reference DHL(USD\$)
0.00kg-1.00kg	USD\$60.00
1.00kg-2.00kg	USD\$70.00
2.00kg-3.00kg	USD\$80.00

Note: The above table is for reference only. There may have some data bias for the uncontrollable factors.

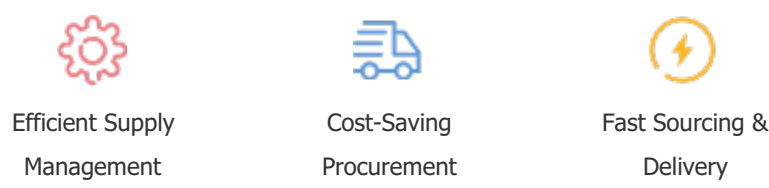
Contact us if you have any questions.

Payment Support

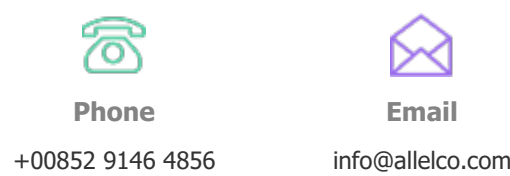
The payment method can be chosen from the methods shown below:
Wire Transfer (T/T, Bank Transfer), Western Union, Credit card, PayPal.



Your Faithful Supply Chain Partner -



Contact us if you have any questions.



+00852 9146 4856

info@allelco.com

Certifications & Memberships



[View More](#)