

Image may be representation.
See specifications for product details.



MAX5072ETJ+T

Manufacturer Part Number	MAX5072ETJ+T
Manufacturer	Maxim Integrated
Allelco Part Number	32D-MAX5072ETJ+T
ECAD Model	Request Free CAD Models
Parts Description	IC REG BUCK BST ADJ DL 32TQFN
Package	32-WFQFN Exposed Pad
Data sheet	Cylindrical Battery Holders.pdf
	MAX5072.pdf
RoHs Status	ROHS3 Compliant

Get a Quote

MAX5072ETJ+T - Analog Devices Inc./Maxim Integrated. New Original in Stock. Download Linear Technology MAX5072ETJ+T datasheet/specifications on AllelcoElec.com. Request a quote for MAX5072ETJ+T, please send us email: info@allelco.com

Specifications

MAX5072ETJ+T Tech Specifications

MAX5072ETJ+T - Analog Devices Inc./Maxim Integrated technical specifications, attributes, parameters

Product Attribute	Attribute Value	Product Attribute	Attribute Value
Manufacturer	Maxim Integrated	Package	Tape & Reel (TR)
Voltage - Output (Min/Fixed)	0.8V	Output Type	Adjustable
Voltage - Output (Max)	28V	Output Configuration	Positive
Voltage - Input (Min)	4.5V	Operating Temperature	-40°C ~ 85°C (TA)
Voltage - Input (Max)	23V	Number of Outputs	2
Topology	Buck, Boost	Mounting Type	Surface Mount
Synchronous Rectifier	No	Function	Step-Up, Step-Down
Supplier Device Package	32-TQFN (5x5)	Frequency - Switching	200kHz ~ 2.2MHz
Series	-	Current - Output	1.38A (Switch), 2.3A (Switch)
Package / Case	32-WFQFN Exposed Pad	Base Product Number	MAX5072

Parts with Similar Specifications

The three parts on the right have similar specifications to Analog Devices Inc./Maxim Integrated MAX5072ETJ+T

Product Attribute				
Part Number	MAX5072ETJ+T	MAX5072ETJ+	MAX5073ETI+T	MAX5073ETI
Manufacturer	Analog Devices Inc./Maxim Integrated	Analog Devices Inc./Maxim Integrated	Analog Devices Inc./Maxim Integrated	Analog Devices Inc./Maxim Integrated
Series	-	-	-	-
Number of Outputs	2	2	2	2
Voltage - Input (Min)	4.5V	4.5V	4.5V	4.5V
Function	Step-Up, Step-Down	Step-Up, Step-Down	Step-Up, Step-Down	Step-Up, Step-Down
Mounting Type	Surface Mount	Surface Mount	Surface Mount	Surface Mount
Current - Output	1.38A (Switch), 2.3A (Switch)	1.38A (Switch), 2.3A (Switch)	1.38A (Switch), 2.3A (Switch)	1.38A (Switch), 2.3A (Switch)
Voltage - Input (Max)	23V	23V	23V	23V
Output Configuration	Positive	Positive	Positive	Positive
Operating Temperature	-40°C ~ 85°C (TA)	-40°C ~ 85°C (TA)	-40°C ~ 85°C (TA)	-40°C ~ 85°C (TA)
Base Product Number	MAX5072	MAX5072	MAX5073	MAX5073
Voltage - Output (Max)	28V	28V	28V	28V
Package / Case	32-WFQFN Exposed Pad	32-WFQFN Exposed Pad	28-WFQFN Exposed Pad	28-WFQFN Exposed Pad
Package	Tape & Reel (TR)	Tube	Tape & Reel (TR)	Tray
Synchronous Rectifier	No	No	No	No
Output Type	Adjustable	Adjustable	Adjustable	Adjustable
Topology	Buck, Boost	Buck, Boost	Buck, Boost	Buck, Boost
Frequency - Switching	200kHz ~ 2.2MHz	200kHz ~ 2.2MHz	200kHz ~ 2.2MHz	200kHz ~ 2.2MHz
Supplier Device Package	32-TQFN (5x5)	32-TQFN (5x5)	28-TQFN (5x5)	28-TQFN (5x5)
Voltage - Output (Min/Fixed)	0.8V	0.8V	0.8V	0.8V

MAX5072ETJ+T Datasheet PDF

Download MAX5072ETJ+T pdf datasheets and Analog Devices Inc./Maxim Integrated documentation for MAX5072ETJ+T - Analog Devices Inc./Maxim Integrated.

Datasheets

[Cylindrical Battery Holders.pdf](#)

Environmental Information

[Maxim Integrated REACH.pdf](#)

[Maxim Integrated RoHS Cert.pdf](#)

Part Numbering Guide

Application Notes

2.2MHz Buck or Boost Power Supply for ADSL2+ Chips.pdf

HTML Datasheet

MAX5072.pdf

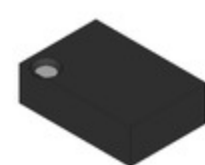
Customers Also Interested in

Recommended Products



MAX5071AAUA+T

Analog Devices Inc./Maxim Integrated
IC REG CTRLR FLYBACK 8UMAX



MAX5078BATT+

Analog Devices Inc./Maxim Integrated
MAX5078 4A, 20NS, MOSFET DRIVER



MAX506BEPP+

Analog Devices Inc./Maxim Integrated
IC DAC 8BIT V-OUT 20DIP



MAX5071BASA+T

Analog Devices Inc./Maxim Integrated
IC REG CTRLR FLYBACK 8SOIC



MAX5070AASA

Analog Devices Inc./Maxim Integrated
IC REG CTRLR FLYBACK 8SOIC



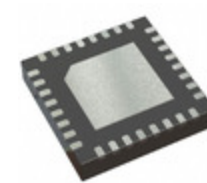
MAX506BEWP

Analog Devices Inc./Maxim Integrated
IC DAC 8BIT V-OUT 20SOIC



MAX5075AAUA+T

Analog Devices Inc./Maxim Integrated
IC GATE DRVR LOW-SIDE 8UMAX



MAX5072ETJ+

Analog Devices Inc./Maxim Integrated
IC REG BUCK BST ADJ DL 32TQFN



MAX5070BASA+

Analog Devices Inc./Maxim Integrated
IC REG CTRLR FLYBACK 8SOIC



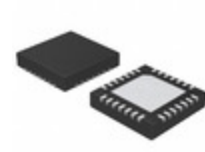
MAX5075AAUA+

Analog Devices Inc./Maxim Integrated
IC GATE DRVR LOW-SIDE 8UMAX



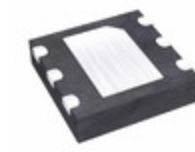
MAX5070BASA+T

Analog Devices Inc./Maxim Integrated
IC REG CTRLR FLYBACK 8SOIC



MAX5073ETI+T

Analog Devices Inc./Maxim Integrated
IC REG BUCK BST ADJ DL 28TQFN



MAX5078BATT+T

Analog Devices Inc./Maxim Integrated
IC GATE DRVR LOW-SIDE 6TDFN



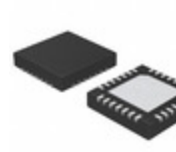
MAX5070BASA

Analog Devices Inc./Maxim Integrated
IC REG CTRLR FLYBACK 8SOIC



MAX5070BAUA+T

Analog Devices Inc./Maxim Integrated
IC REG CTRLR FLYBACK 8UMAX



MAX5073ETI

Analog Devices Inc./Maxim Integrated
IC REG BUCK BST ADJ DL 28TQFN

Shipment

Delivery Time

In-stock items can be shipped within 24 hours. Some parts will be arranged for delivery within 1-2 days from the date all items arrive at our warehouse. And Allelco ships order once a day at about 17:00, except Sunday. Once the goods are shipped, the estimated delivery time depends on the shipping methods and Delivery destination. The table below shows are the logistic time for some common countries.

Delivery Cost

- > Use your express account for shipment if you have one.
- > Use our account for the shipment. Refer to the table below for the approximate charges.

(Different time frame / countries / package size has different price.)

Delivery Method

- > Global Common Shipment by DHL / UPS / FedEx / TNT / EMS / SF we support.
- > Others more shipping ways, please get in touch with your customer manager.

Common Countries Logistic Time Reference		
Region	Country	Logistic Time(Day)
America	United States	5
	Brazil	7
Europe	Germany	5
	United Kingdom	4
	Italy	5
Oceania	Australia	6
	New Zealand	7
Asia	India	6
	Japan	7
Middle East	Israel	6

DHL & FedEx Shipment Charges Reference	
Shipment charges(KG)	Reference DHL(USD\$)
0.00kg-1.00kg	USD\$60.00
1.00kg-2.00kg	USD\$70.00
2.00kg-3.00kg	USD\$80.00

Note: The above table is for reference only. There may have some data bias for the uncontrollable factors.
Contact us if you have any questions.

Payment Support

The payment method can be chosen from the methods shown below:
Wire Transfer (T/T, Bank Transfer), Western Union, Credit card, PayPal.



Your Faithful Supply Chain Partner -



Efficient Supply Management



Cost-Saving Procurement



Fast Sourcing & Delivery

Contact us if you have any questions.



Phone

+00852 9146 4856



Email

info@allelco.com

Certifications & Memberships



View More

