



Image may be representation.  
See specifications for product details.



## AD1851RZ-REEL7

Manufacturer Part Number	<b>AD1851RZ-REEL7</b>
Manufacturer	<b>Analog Devices, Inc.</b>
Allelco Part Number	32D-AD1851RZ-REEL7
ECAD Model	PCB Symbol, Footprint & 3D Model
Parts Description	IC DAC/AUDIO 16BIT 16SOIC
Package	16-SOIC (0.295", 7.50mm Width)
Data sheet	<b>Cylindrical Battery Holders.pdf</b>
RoHs Status	<b>ROHS3 Compliant</b>

**Get a Quote**

AD1851RZ-REEL7 - Analog Devices Inc..New Original in Stock. Download Linear Technology AD1851RZ-REEL7 datasheet/specifications on AllelcoElec.com.  
Request a quote for AD1851RZ-REEL7, please send us email: [info@allelco.com](mailto:info@allelco.com)

### Specifications

AD1851RZ-REEL7 Tech Specifications

AD1851RZ-REEL7 - Analog Devices Inc. technical specifications, attributes, parameters

Product Attribute	Attribute Value	Product Attribute	Attribute Value
Manufacturer	Analog Devices, Inc.	Package / Case	16-SOIC (0.295", 7.50mm Width)
Voltage Supply Source	Dual ±	Package	Tape & Reel (TR)
Voltage - Supply	±5V	Operating Temperature	-25°C ~ 70°C
Type	DAC, Audio	Number of Channels	1
Supplier Device Package	16-SOIC	Mounting Type	Surface Mount
Series	-	Data Interface	PCM
Sampling Rate (Per Second)	-	Base Product Number	AD1851
Resolution (Bits)	16 b		

### Parts with Similar Specifications

The three parts on the right have similar specifications to Analog Devices Inc. AD1851RZ-REEL7

Product Attribute				
Part Number	AD1851RZ-REEL7	AD1852JRSZRL	AD1851RZ	AD1853JRSZ
Manufacturer	Analog Devices Inc.	Analog Devices Inc.	Analog Devices Inc.	Analog Devices Inc.
Base Product Number	AD1851	AD1852	AD1851	AD1853
Number of Channels	1	1	1	1
Package / Case	16-SOIC (0.295", 7.50mm Width)	28-SSOP (0.209", 5.30mm Width)	16-SOIC (0.295", 7.50mm Width)	28-SSOP (0.209", 5.30mm Width)
Data Interface	PCM	DSP, I²S	PCM	DSP, I²S
Voltage Supply Source	Dual ±	Analog and Digital	Dual ±	Analog and Digital
Sampling Rate (Per Second)	-	192k	-	192k
Operating Temperature	-25°C ~ 70°C	0°C ~ 70°C	-25°C ~ 70°C	0°C ~ 70°C
Supplier Device Package	16-SOIC	28-SSOP	16-SOIC	28-SSOP
Voltage - Supply	±5V	5V	±5V	5V
Type	DAC, Audio	DAC, Audio	DAC, Audio	DAC, Audio
Resolution (Bits)	16 b	24 b	16 b	24 b
Mounting Type	Surface Mount	Surface Mount	Surface Mount	Surface Mount
Package	Tape & Reel (TR)	Tape & Reel (TR)	Tube	Tube
Series	-	-	-	-

### AD1851RZ-REEL7 Datasheet PDF

Download AD1851RZ-REEL7 pdf datasheets and Analog Devices Inc. documentation for AD1851RZ-REEL7 - Analog Devices Inc..

#### Datasheets

[Cylindrical Battery Holders.pdf](#)

#### Other Related Documents

[Tape and Reel Packaging.pdf](#)

### Customers Also Interested in

#### Recommended Products



**AD1852JRSZRL**

Analog Devices Inc.  
IC DAC STEREO 24BIT 28-SSOP



**AD1851R**

Analog Devices Inc.  
IC DAC AUDIO 16BIT PCM 16-SOIC



**AD1854JRSRL**

Analog Devices Inc.  
IC DAC STEREO 96KHZ 5V 28SSOP



**AD1854JRS**

Analog Devices Inc.  
IC DAC STEREO 96KHZ 5V 28SSOP



**AD1851R-J**

ADI (Analog Devices, Inc.)



**AD1851NZ**

ADI (Analog Devices, Inc.)

**AD1851N**

ADI (Analog Devices, Inc.)

**AD184L**

ADI (Analog Devices, Inc.)

**AD1849XP**

ADI (Analog Devices, Inc.)

**AD1854**

ADI (Analog Devices, Inc.)

**AD1851RZ**Analog Devices Inc.  
IC DAC/AUDIO 16BIT 16SOIC**AD1853JRSZ**Analog Devices Inc.  
IC DAC/AUDIO 24BIT 192K 28SSOP**AD1852JRS**Analog Devices Inc.  
IC DAC STEREO 24BIT 28-SSOP**AD1849KXP**

ADI (Analog Devices, Inc.)

**AD1854KRS**Analog Devices Inc.  
IC DAC STEREO 96KHZ 5V 28SSOP**AD1853JRS**Analog Devices Inc.  
IC DAC STEREO 24BIT 28-SSOP**AD1854JRS-REEL**

ADI (Analog Devices, Inc.)

**AD1852JRSZ**ADI (Analog Devices, Inc.)  
IC DAC STEREO 24BIT 5V 28-SSOP

## Shipment

### Delivery Time

In-stock items can be shipped within 24 hours. Some parts will be arranged for delivery within 1-2 days from the date all items arrive at our warehouse. And Allelco ships order once a day at about 17:00, except Sunday. Once the goods are shipped, the estimated delivery time depends on the shipping methods and Delivery destination. The table below shows are the logistic time for some common countries.

### Delivery Cost

> Use your express account for shipment if you have one.

> Use our account for the shipment. Refer to the table below for the approximate charges.

(Different time frame / countries / package size has different price.)

### Delivery Method

> Global Common Shipment by DHL / UPS / FedEx / TNT / EMS / SF we support.

> Others more shipping ways, please get in touch with your customer manager.

**Common Countries Logistic Time Reference**

Region	Country	Logistic Time(Day)
America	United States	5
	Brazil	7
Europe	Germany	5
	United Kingdom	4
	Italy	5
Oceania	Australia	6
	New Zealand	7
Asia	India	6
	Japan	7
Middle East	Israel	6

**DHL & FedEx Shipment Charges Reference**

Shipment charges(KG)	Reference DHL(USD\$)
0.00kg-1.00kg	USD\$60.00
1.00kg-2.00kg	USD\$70.00
2.00kg-3.00kg	USD\$80.00

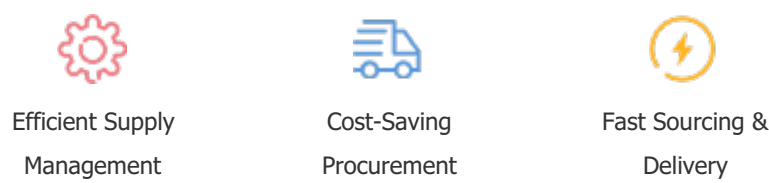
Note: The above table is for reference only. There may have some data bias for the uncontrollable factors.  
Contact us if you have any questions.

## Payment Support

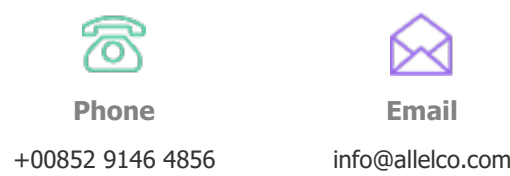
The payment method can be chosen from the methods shown below:  
Wire Transfer (T/T, Bank Transfer), Western Union, Credit card, PayPal.



## Your Faithful Supply Chain Partner -



Contact us if you have any questions.



## Certifications & Memberships



[View More](#)



### Contact us

Address: Flat/Rm C 13/F Harvard Commercial Building 105-111 Thomson Road, Wan Chai, Hong Kong

Phone: +00852 9146 4856

Fax: +00852 3010 8510

Email: info@Allelco.com

Copyright © 2012-2023 AllelcoElec.com. All rights reserved.