



Image may be representation.
See specifications for product details.



MAX4721EUA+

Manufacturer Part Number	MAX4721EUA+
Manufacturer	Maxim Integrated
Allelco Part Number	32D-MAX4721EUA+
ECAD Model	Request Free CAD Models
Parts Description	IC SWITCH SPST-NOX2 4.5OHM 8UMAX
Package	8-TSSOP, 8-MSOP (0.118', 3.00mm Width)
Data sheet	Cylindrical Battery Holders.pdf
RoHs Status	ROHS3 Compliant

Get a Quote

MAX4721EUA+ - Analog Devices Inc./Maxim Integrated.New Original in Stock. Download Linear Technology MAX4721EUA+ datasheet/specifications on AllelcoElec.com. Request a quote for MAX4721EUA+, please send us email: info@allelco.com

Specifications

MAX4721EUA+ Tech Specifications

MAX4721EUA+ - Analog Devices Inc./Maxim Integrated technical specifications, attributes, parameters

Product Attribute	Attribute Value	Product Attribute	Attribute Value
Manufacturer	Maxim Integrated	Number of Circuits	2
Voltage - Supply, Single (V+)	1.8V ~ 5.5V	Multiplexer/Demultiplexer Circuit	1:1
Voltage - Supply, Dual (V±)	-	Mounting Type	Surface Mount
Switch Time (Ton, Toff) (Max)	80ns, 40ns	Current - Leakage (IS(off)) (Max)	500pA
Switch Circuit	SPST - NO	Crosstalk	-110dB @ 1MHz
Supplier Device Package	8-uMAX/uSOP	Charge Injection	5pC
Series	-	Channel-to-Channel Matching (ΔRon)	100mOhm
Package / Case	8-TSSOP, 8-MSOP (0.118', 3.00mm Width)	Channel Capacitance (CS(off), CD(off))	9pF
Package	Tube	Base Product Number	MAX4721
Operating Temperature	-40°C ~ 85°C (TA)	-3db Bandwidth	300MHz
On-State Resistance (Max)	4.5Ohm		

Parts with Similar Specifications

The three parts on the right have similar specifications to Analog Devices Inc./Maxim Integrated MAX4721EUA+

Product Attribute				
Part Number	MAX4721EUA+	MAX4722EUA+	MAX4723EUA+	MAX4722EUA
Manufacturer	Analog Devices Inc./Maxim Integrated	Analog Devices Inc./Maxim Integrated	Analog Devices Inc./Maxim Integrated	Analog Devices Inc./Maxim Integrated
Channel-to-Channel Matching (ΔRon)	100mOhm	100mOhm	100mOhm	100mOhm
Switch Circuit	SPST - NO	SPST - NC	SPST - NO/NC	SPST - NC
Package	Tube	Tube	Tube	Bulk
Operating Temperature	-40°C ~ 85°C (TA)	-40°C ~ 85°C (TA)	-40°C ~ 85°C (TA)	-40°C ~ 85°C (TA)
Number of Circuits	2	2	2	2
Mounting Type	Surface Mount	Surface Mount	Surface Mount	Surface Mount
Current - Leakage (IS(off)) (Max)	500pA	500pA	500pA	500pA
Series	-	-	-	-
Switch Time (Ton, Toff) (Max)	80ns, 40ns	80ns, 40ns	80ns, 40ns	80ns, 40ns
Multiplexer/Demultiplexer Circuit	1:1	1:1	1:1	1:1
Base Product Number	MAX4721	MAX4722	MAX4723	MAX4722
Supplier Device Package	8-uMAX/uSOP	8-uMAX/uSOP	8-uMAX/uSOP	8-μMAX
Channel Capacitance (CS(off), CD(off))	9pF	9pF	9pF	9pF
On-State Resistance (Max)	4.5Ohm	4.5Ohm	4.5Ohm	30hm
Package / Case	8-TSSOP, 8-MSOP (0.118', 3.00mm Width)	8-TSSOP, 8-MSOP (0.118', 3.00mm Width)	8-TSSOP, 8-MSOP (0.118', 3.00mm Width)	8-TSSOP, 8-MSOP (0.118", 3.00mm Width)
-3db Bandwidth	300MHz	300MHz	300MHz	300MHz
Voltage - Supply, Single (V+)	1.8V ~ 5.5V	1.8V ~ 5.5V	1.8V ~ 5.5V	1.8V ~ 5.5V
Crosstalk	-110dB @ 1MHz	-110dB @ 1MHz	-110dB @ 1MHz	-80dB @ 10MHz
Charge Injection	5pC	5pC	5pC	5pC
Voltage - Supply, Dual (V±)	-	-	-	-

MAX4721EUA+ Datasheet PDF

Download MAX4721EUA+ pdf datasheets and Analog Devices Inc./Maxim Integrated documentation for MAX4721EUA+ - Analog Devices Inc./Maxim Integrated.

Datasheets


[Cylindrical Battery Holders.pdf](#)

Environmental Information

[Maxim Integrated REACH.pdf](#)

[Maxim Integrated RoHS Cert.pdf](#)

Part Numbering Guide

 Part Numbering System.pdf

Customers Also Interested in

Recommended Products



MAX4722EUA+

Analog Devices Inc./Maxim Integrated
IC SWITCH SPST-NCX2 4.5OHM 8UMAX



MAX471CPA+

Analog Devices Inc./Maxim Integrated
IC CURRENT SENSE 1 CIRCUIT 8DIP



MAX4723EUA+

Analog Devices Inc./Maxim Integrated
IC SW SPST-NO/NCX2 4.5OHM 8UMAX



MAX4722EUA

Analog Devices Inc./Maxim Integrated
IC SWITCH SPST-NC X 2 30HM 8UMAX



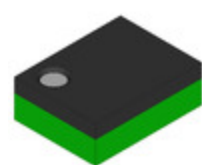
MAX4721EBL+T

Analog Devices Inc./Maxim Integrated
IC SWITCH SPST-NOX2 4.5OHM 9WLP



MAX471CPA

Analog Devices Inc./Maxim Integrated
IC CURRENT SENSE 1 CIRCUIT 8DIP



MAX4718EBC-T

Analog Devices Inc./Maxim Integrated
IC SW SPDT-NO/NCX2 3.5OHM 10UCSP



MAX4722EUA+T

Analog Devices Inc./Maxim Integrated
IC SWITCH SPST-NCX2 4.5OHM 8UMAX



MAX4723EUA+T

Analog Devices Inc./Maxim Integrated
IC SW SPST-NO/NCX2 4.5OHM 8UMAX



MAX471ESA

Analog Devices Inc./Maxim Integrated
IC CURRENT SENSE 1 CIRCUIT 8SOIC



MAX4719EUB+

Analog Devices Inc./Maxim Integrated
IC SWITCH SPDT X 2 200HM 10UMAX



MAX471CSA

Analog Devices / Maxim Integrated



MAX4729EXT+T

Analog Devices Inc./Maxim Integrated
IC SWITCH SPDT X 1 5.5OHM SC70-6



MAX4720ELT+T

Analog Devices Inc./Maxim Integrated
IC MUX 6UDFN



MAX471EPA+

Analog Devices / Maxim Integrated



MAX4729ELT+T

Analog Devices Inc./Maxim Integrated
IC SWITCH SPDT X 1 5.5OHM 6UDFN



MAX4721EUA+T

Analog Devices Inc./Maxim Integrated
IC SWITCH SPST-NOX2 4.5OHM 8UMAX



MAX4719EUB+T

Analog Devices Inc./Maxim Integrated
IC SWITCH SPDT X 2 200HM 10UMAX

Shipment

Delivery Time

In-stock items can be shipped within 24 hours. Some parts will be arranged for delivery within 1-2 days from the date all items arrive at our warehouse. And Allelco ships order once a day at about 17:00, except Sunday. Once the goods are shipped, the estimated delivery time depends on the shipping methods and Delivery destination. The table below shows are the logistic time for some common countries.

Delivery Cost

- > Use your express account for shipment if you have one.
 - > Use our account for the shipment. Refer to the table below for the approximate charges.
- (Different time frame / countries / package size has different price.)

Delivery Method

- > Global Common Shipment by DHL / UPS / FedEx / TNT / EMS / SF we support.
- > Others more shipping ways, please get in touch with your customer manager.

Common Countries Logistic Time Reference

Region	Country	Logistic Time(Day)
America	United States	5
	Brazil	7
Europe	Germany	5
	United Kingdom	4
	Italy	5
Oceania	Australia	6
	New Zealand	7
Asia	India	6
	Japan	7
Middle East	Israel	6

DHL & FedEx Shipment Charges Reference

Shipment charges(KG)	Reference DHL(USD\$)
0.00kg-1.00kg	USD\$60.00
1.00kg-2.00kg	USD\$70.00
2.00kg-3.00kg	USD\$80.00

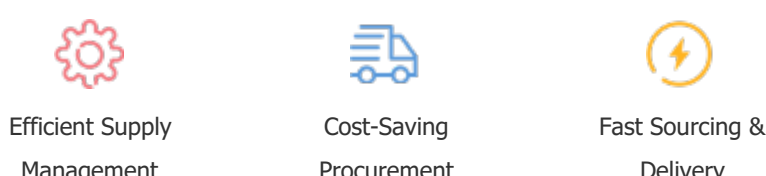
Note: The above table is for reference only. There may have some data bias for the uncontrollable factors.
Contact us if you have any questions.

Payment Support

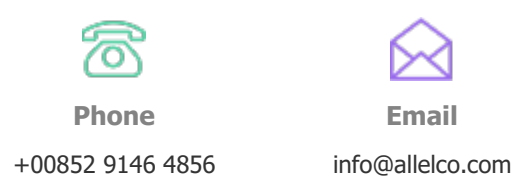
The payment method can be chosen from the methods shown below:
Wire Transfer (T/T, Bank Transfer), Western Union, Credit card, PayPal.



Your Faithful Supply Chain Partner -



Contact us if you have any questions.



Certifications & Memberships



View More