



Image may be representation.  
See specifications for product details.



## P6SMB12CAT3G

Manufacturer Part Number	<b>P6SMB12CAT3G</b>
Manufacturer	<b>Littelfuse</b>
Allelco Part Number	32D-P6SMB12CAT3G
ECAD Model	PCB Symbol, Footprint & 3D Model
Parts Description	TVS DIODE 10.2VWM 16.7VC SMB
Package	DO-214AA, SMB
Data sheet	<b>Cylindrical Battery Holders.pdf</b>
RoHs Status	<b>ROHS3 Compliant</b>

**Get a Quote**

P6SMB12CAT3G - Littelfuse Inc..New Original in Stock. Download Linear Technology P6SMB12CAT3G datasheet/specifications on AllelcoElec.com.  
Request a quote for P6SMB12CAT3G, please send us email: [info@allelco.com](mailto:info@allelco.com)

### Specifications

P6SMB12CAT3G Tech Specifications

P6SMB12CAT3G - Littelfuse Inc. technical specifications, attributes, parameters

Product Attribute	Attribute Value	Product Attribute	Attribute Value
Manufacturer	Littelfuse	Package / Case	DO-214AA, SMB
Voltage - Reverse Standoff (Typ)	10.2V	Package	Tape & Reel (TR)
Voltage - Clamping (Max) @ Ipp	16.7V	Operating Temperature	-65°C ~ 150°C (TJ)
Voltage - Breakdown (Min)	11.4V	Mounting Type	Surface Mount
Type	Zener	Current - Peak Pulse (10/1000µs)	36A
Supplier Device Package	SMB	Capacitance @ Frequency	800pF @ 1MHz
Series	P6SMB	Bidirectional Channels	1
Power Line Protection	No	Base Product Number	P6SMB
Power - Peak Pulse	600W	Applications	General Purpose

### Parts with Similar Specifications

The three parts on the right have similar specifications to Littelfuse Inc. P6SMB12CAT3G

Product Attribute				
Part Number	P6SMB12CAT3G	<b>P6SMB12CA-E3/52</b>	<b>P6SMB12CA</b>	<b>P6SMB130A</b>
Manufacturer	Littelfuse Inc.	Vishay General Semiconductor - Diodes Division	Littelfuse Inc.	Taiwan Semiconductor Corporation
Voltage - Reverse Standoff (Typ)	10.2V	10.2V	10.2V	111V
Series	P6SMB	P6SMB, TransZorb®	P6SMB	P6SMB
Voltage - Breakdown (Min)	11.4V	11.4V	11.4V	124V
Capacitance @ Frequency	800pF @ 1MHz	-	-	-
Package	Tape & Reel (TR)	Tape & Reel (TR)	Tape & Reel (TR)	Tape & Reel (TR)
Mounting Type	Surface Mount	Surface Mount	Surface Mount	Surface Mount
Voltage - Clamping (Max) @ Ipp	16.7V	16.7V	16.7V	179V
Applications	General Purpose	General Purpose	General Purpose	General Purpose
Power - Peak Pulse	600W	600W	600W	600W
Package / Case	DO-214AA, SMB	DO-214AA, SMB	DO-214AA, SMB	DO-214AA, SMB
Power Line Protection	No	No	No	No
Bidirectional Channels	1	1	1	-
Base Product Number	P6SMB	P6SMB12	-	P6SMB130
Type	Zener	Zener	Zener	Zener
Operating Temperature	-65°C ~ 150°C (TJ)	-65°C ~ 150°C (TJ)	-55°C ~ 150°C (TJ)	-55°C ~ 150°C (TJ)
Current - Peak Pulse (10/1000µs)	36A	35.9A	36.5A	3.5A
Supplier Device Package	SMB	DO-214AA (SMBJ)	DO-214AA (SMBJ)	DO-214AA (SMB)

### P6SMB12CAT3G Datasheet PDF

Download P6SMB12CAT3G pdf datasheets and Littelfuse Inc. documentation for P6SMB12CAT3G - Littelfuse Inc..

#### Datasheets

[Cylindrical Battery Holders.pdf](#)

#### PCN Assembly/Origin

[2.73KHz.pdf](#)

### Customers Also Interested in

#### Recommended Products

**P6SMB12CA-E3/52**

Vishay General Semiconductor - Diodes Division  
TVS DIODE 10.2VWM 16.7VC DO214AA

**P6SMB12CA**

Littelfuse Inc.  
TVS DIODE 10.2VWM 16.7VC DO214AA

**P6SMB130A**

Taiwan Semiconductor Corporation  
TVS DIODE 111VWM 179VC DO214AA

**P6SMB12CA**

Bourns Inc.  
TVS DIODE 10.2VWM 16.7VC DO214AA

**P6SMB130A**

Meritek  
TVS DIODE 111VWM 179VC

**P6SMB12CA**

Good-Ark Semiconductor  
TVS, BI-DIR, 600W, 12V, DO-214AA

**P6SMB12AT3G**

Littelfuse Inc.  
TVS DIODE 10.2VWM 16.7VC SMB

**P6SMB130CA**

Meritek  
TVS DIODE 111VWM 179VC

**P6SMB12CA**

Eaton - Electronics Division  
TVS DIODE 10.2VWM 16.7VC SMB

**P6SMB12CA**

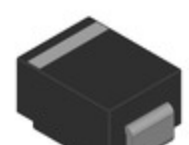
Taiwan Semiconductor Corporation  
TVS DIODE 10.2VWM 16.7VC DO214AA

**P6SMB130CA**

Eaton - Electronics Division  
TVS DIODE 111VWM 179VC SMB

**P6SMB130A**

Eaton - Electronics Division  
TVS DIODE 111VWM 179VC SMB

**P6SMB12AT3**

onsemi  
TVS DIODE 10.2VWM 16.7VC SMB

**P6SMB130AT3G**

Littelfuse Inc.  
TVS DIODE 111VWM 179VC SMB

**P6SMB130A**

Bourns Inc.  
TVS DIODE 111VWM 179VC DO214AA

**P6SMB12CA**

Meritek  
TVS DIODE 10.2VWM 16.7VC

**P6SMB130A**

Littelfuse Inc.  
TVS DIODE 111VWM 179VC DO214AA

**P6SMB12AT3G**

onsemi  
TVS DIODE 10.2V 16.7V 425STEPBGA

## Shipment

### Delivery Time

In-stock items can be shipped within 24 hours. Some parts will be arranged for delivery within 1-2 days from the date all items arrive at our warehouse. And Allelco ships order once a day at about 17:00, except Sunday. Once the goods are shipped, the estimated delivery time depends on the shipping methods and Delivery destination. The table below shows are the logistic time for some common countries.

### Delivery Cost

> Use your express account for shipment if you have one.

> Use our account for the shipment. Refer to the table below for the approximate charges.

(Different time frame / countries / package size has different price.)

### Delivery Method

> Global Common Shipment by DHL / UPS / FedEx / TNT / EMS / SF we support.

> Others more shipping ways, please get in touch with your customer manager.

Common Countries Logistic Time Reference		
Region	Country	Logistic Time(Day)
America	United States	5
	Brazil	7
Europe	Germany	5
	United Kingdom	4
	Italy	5
Oceania	Australia	6
	New Zealand	7
Asia	India	6
	Japan	7
Middle East	Israel	6

DHL & FedEx Shipment Charges Reference	
Shipment charges(KG)	Reference DHL(USD\$)
0.00kg-1.00kg	USD\$60.00
1.00kg-2.00kg	USD\$70.00
2.00kg-3.00kg	USD\$80.00

Note: The above table is for reference only. There may have some data bias for the uncontrollable factors.

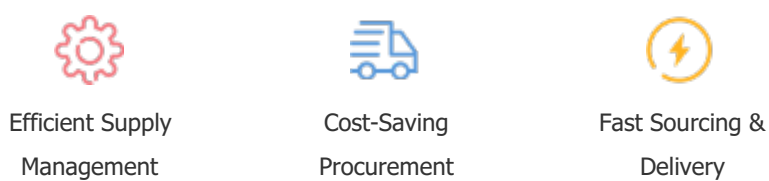
Contact us if you have any questions.

## Payment Support

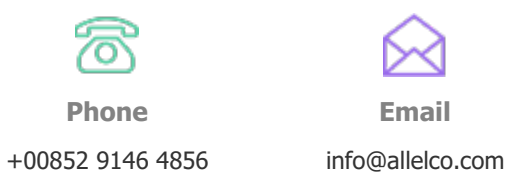
The payment method can be chosen from the methods shown below:  
Wire Transfer (T/T, Bank Transfer), Western Union, Credit card, PayPal.



## Your Faithful Supply Chain Partner -



Contact us if you have any questions.



## Certifications & Memberships



[View More](#)