

Image may be representation.  
See specifications for product details.



## 5CEBA4U19C8N

|                          |  |
|--------------------------|--|
| Manufacturer Part Number | <b>5CEBA4U19C8N</b>  |
| Manufacturer             | <b>Intel</b>   |
| Allelco Part Number      | 32D-5CEBA4U19C8N   |
| ECAD Model               | PCB Symbol, Footprint & 3D Mode  |
| Parts Description        | IC FPGA 224 I/O 484UBGA  |
| Package                  | 484-FBGA   |
| Data sheet               | <a href="#">Virtual JTAG Megafuntion Guide.pdf</a><br><a href="#">Cyclone V Device Handbook.pdf</a><br><a href="#">Cyclone V Device Overview.pdf</a> |
| RoHs Status              | RoHS Compliant   |

**Get a Quote**

5CEBA4U19C8N - Intel.New Original in Stock. Download Linear Technology 5CEBA4U19C8N datasheet/specifications on AllelcoElec.com.  
Request a quote for 5CEBA4U19C8N, please send us email: [info@allelco.com](mailto:info@allelco.com)

### Specifications

5CEBA4U19C8N Tech Specifications

5CEBA4U19C8N - Intel technical specifications, attributes, parameters

| Product Attribute       | Attribute Value  | Product Attribute              | Attribute Value |
|-------------------------|------------------|--------------------------------|-----------------|
| Manufacturer            | Intel            | Operating Temperature          | 0°C ~ 85°C (TJ) |
| Voltage - Supply        | 1.07V ~ 1.13V    | Number of Logic Elements/Cells | 49000           |
| Total RAM Bits          | 3464192          | Number of LABs/CLBs            | 18480           |
| Supplier Device Package | 484-UBGA (19x19) | Number of I/O                  | 224             |
| Series                  | Cyclone® V E     | Mounting Type                  | Surface Mount   |
| Package / Case          | 484-FBGA         | Base Product Number            | 5CEBA4          |
| Package                 | Tray             |                                |                 |

### Parts with Similar Specifications

The three parts on the right have similar specifications to Intel 5CEBA4U19C8N

| Product Attribute              |                  |                  |                  |                  |
|--------------------------------|------------------|------------------|------------------|------------------|
| Part Number                    | 5CEBA4U19C8N     | 5CEBA4U15C6N     | 5CEBA4F17C7N     | 5CEBA4U19C7N     |
| Manufacturer                   | Intel            | Intel            | Intel            | Intel            |
| Package / Case                 | 484-FBGA         | 324-LFBGA        | 256-LBGA         | 484-FBGA         |
| Number of I/O                  | 224              | 176              | 128              | 224              |
| Number of LABs/CLBs            | 18480            | 18480            | 18480            | 18480            |
| Package                        | Tray             | Tray             | Tray             | Tray             |
| Number of Logic Elements/Cells | 49000            | 49000            | 49000            | 49000            |
| Mounting Type                  | Surface Mount    | Surface Mount    | Surface Mount    | Surface Mount    |
| Supplier Device Package        | 484-UBGA (19x19) | 324-UBGA (15x15) | 256-FBGA (17x17) | 484-UBGA (19x19) |
| Series                         | Cyclone® V E     | Cyclone® V E     | Cyclone® V E     | Cyclone® V E     |
| Total RAM Bits                 | 3464192          | 3464192          | 3464192          | 3464192          |
| Voltage - Supply               | 1.07V ~ 1.13V    | 1.07V ~ 1.13V    | 1.07V ~ 1.13V    | 1.07V ~ 1.13V    |
| Operating Temperature          | 0°C ~ 85°C (TJ)  | 0°C ~ 85°C (TJ)  | 0°C ~ 85°C (TJ)  | 0°C ~ 85°C (TJ)  |
| Base Product Number            | 5CEBA4           | 5CEBA4           | 5CEBA4           | 5CEBA4           |

### 5CEBA4U19C8N Datasheet PDF

Download 5CEBA4U19C8N pdf datasheets and Intel documentation for 5CEBA4U19C8N - Intel.

#### Datasheets

[Virtual JTAG Megafuntion Guide.pdf](#)

[Cyclone V Device Handbook.pdf](#)

[Cyclone V Device Overview.pdf](#)

#### PCN Packaging

[Mult Dev Label CHG 24/Jan/2020.pdf](#)

[Mult Dev Label Chgs 24/Feb/2020.pdf](#)

#### PCN Design/Specification

[Quartus SW/Web Chgs 23/Sep/2021.pdf](#)

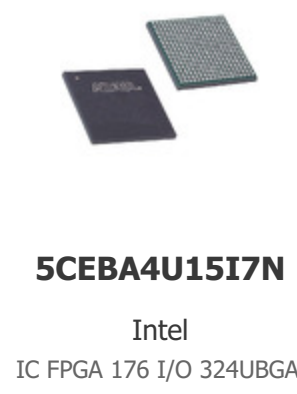
[Mult Dev Software Chgs 3/Jun/2021.pdf](#)

#### Errata

[Cyclone V GX,GT,E Errata.pdf](#)

### Customers Also Interested in

#### Recommended Products



## Shipment

### Delivery Time

In-stock items can be shipped within 24 hours. Some parts will be arranged for delivery within 1-2 days from the date all items arrive at our warehouse. And Allelco ships order once a day at about 17:00, except Sunday. Once the goods are shipped, the estimated delivery time depends on the shipping methods and Delivery destination. The table below shows are the logistic time for some common countries.

### Delivery Cost

> Use your express account for shipment if you have one.

> Use our account for the shipment. Refer to the table below for the approximate charges.

(Different time frame / countries / package size has different price.)

### Delivery Method

> Global Common Shipment by DHL / UPS / FedEx / TNT / EMS / SF we support.

> Others more shipping ways, please get in touch with your customer manager.

| Common Countries Logistic Time Reference |                |                    |
|--|----------------|--------------------|
| Region                                   | Country        | Logistic Time(Day) |
| America                                  | United States  | 5                  |
|  | Brazil         | 7                  |
| Europe                                   | Germany        | 5                  |
|  | United Kingdom | 4                  |
|  | Italy          | 5                  |
| Oceania                                  | Australia      | 6                  |
|  | New Zealand    | 7                  |
| Asia                                     | India          | 6                  |
|  | Japan          | 7                  |
| Middle East                              | Israel         | 6                  |

| DHL & FedEx Shipment Charges Reference |                      |
|--|----------------------|
| Shipment charges(KG)                   | Reference DHL(USD\$) |
| 0.00kg-1.00kg                          | USD\$60.00           |
| 1.00kg-2.00kg                          | USD\$70.00           |
| 2.00kg-3.00kg                          | USD\$80.00           |

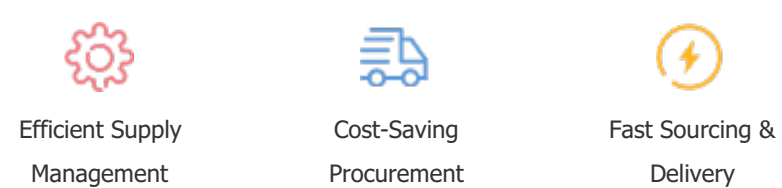
Note: The above table is for reference only. There may have some data bias for the uncontrollable factors.  
Contact us if you have any questions.

## Payment Support

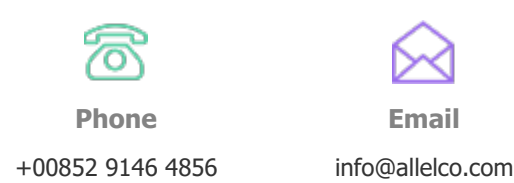
The payment method can be chosen from the methods shown below:  
Wire Transfer (T/T, Bank Transfer), Western Union, Credit card,  
PayPal.



## Your Faithful Supply Chain Partner -



Contact us if you have any questions.



## Certifications & Memberships



[View More](#)