

Image may be representation.  
See specifications for product details.



## EPF10K100ARI240-3

Manufacturer Part Number	<b>EPF10K100ARI240-3</b>
Manufacturer	<b>Intel</b>
Allelco Part Number	32D-EPF10K100ARI240-3
ECAD Model	Request Free CAD Models
Parts Description	IC FPGA 189 I/O 240RQFP
Package	240-BFQFP Exposed Pad
Data sheet	<b>FLEX 10K.pdf</b>

**Get a Quote**

EPF10K100ARI240-3 - Intel.New Original in Stock. Download Linear Technology EPF10K100ARI240-3 datasheet/specifications on AllelcoElec.com.  
Request a quote for EPF10K100ARI240-3, please send us email: [info@allelco.com](mailto:info@allelco.com)

### Specifications

EPF10K100ARI240-3 Tech Specifications  
EPF10K100ARI240-3 - Intel technical specifications, attributes, parameters

Product Attribute	Attribute Value	Product Attribute	Attribute Value
Manufacturer	Intel	Operating Temperature	-40°C ~ 85°C (TA)
Voltage - Supply	3V ~ 3.6V	Number of Logic Elements/Cells	4992
Total RAM Bits	24576	Number of LABs/CLBs	624
Supplier Device Package	240-RQFP (32x32)	Number of I/O	189
Series	FLEX-10KA®	Number of Gates	158000
Package / Case	240-BFQFP Exposed Pad	Mounting Type	Surface Mount
Package	Tray	Base Product Number	EPF10K100

### Parts with Similar Specifications

The three parts on the right have similar specifications to Intel EPF10K100ARI240-3

Product Attribute				
Part Number	EPF10K100ARI240-3	<b>EPF10K100ARC240-1</b>	<b>EPF10K100EFC256-2</b>	<b>EPF10K100ARC240-2</b>
Manufacturer	Intel	Intel	Altera	Intel
Supplier Device Package	240-RQFP (32x32)	240-RQFP (32x32)	256-FBGA (17x17)	240-RQFP (32x32)
Base Product Number	EPF10K100	EPF10K100	EPF10K100	EPF10K100
Series	FLEX-10KA®	FLEX-10KA®	FLEX-10KE®	FLEX-10KA®
Voltage - Supply	3V ~ 3.6V	3V ~ 3.6V	2.375V ~ 2.625V	3V ~ 3.6V
Number of LABs/CLBs	624	624	624	624
Package	Tray	Tray	Bulk	Tray
Mounting Type	Surface Mount	Surface Mount	Surface Mount	Surface Mount
Operating Temperature	-40°C ~ 85°C (TA)	0°C ~ 70°C (TA)	0°C ~ 70°C (TA)	0°C ~ 70°C (TA)
Number of I/O	189	189	191	189
Package / Case	240-BFQFP Exposed Pad	240-BFQFP Exposed Pad	256-BGA	240-BFQFP Exposed Pad
Total RAM Bits	24576	24576	-	24576
Number of Logic Elements/Cells	4992	4992	-	4992
Number of Gates	158000	158000	-	158000

### EPF10K100ARI240-3 Datasheet PDF

Download EPF10K100ARI240-3 pdf datasheets and Intel documentation for EPF10K100ARI240-3 - Intel.

#### Datasheets

[FLEX 10K.pdf](#)

#### PCN Packaging

[All Dev Pkg Chg 1/Aug/2018.pdf](#)

[RQFP PQ4 30/Jun/2010.pdf](#)

#### PCN Obsolescence/ EOL

[EOL 01/Dec/2016.pdf](#)

[EOL 21/Nov/2016.pdf](#)

#### PCN Other

[Software Disc 06/Nov/2020.pdf](#)

#### PCN Design/Specification

[Mult Series Software Chgs 26/Mar/2020.pdf](#)

[Laser Mark 17/Feb/2016.pdf](#)

### Customers Also Interested in

## Recommended Products

					
<b>EPF10K100ARC240-1</b>	<b>EPF10K100EFC256-2</b>	<b>EPF10K100ARC240-2</b>	<b>EPF10K100BFC256-2</b>	<b>EPF10K100EBC356-2N</b>	<b>EPF10K100EFC256-2X</b>
Intel IC FPGA 189 I/O 240RQFP	Altera IC FPGA 191 I/O 256FBGA	Intel IC FPGA 189 I/O 240RQFP	Altera LOADABLE PLD, 12NS PBGA256	Intel IC FPGA 274 I/O 356BGA	Altera IC FPGA 191 I/O 256FBGA
					
<b>EPF10K100EFC256-3N</b>	<b>EPF10K100EFC256-2</b>	<b>EPF10K100AFC484-2</b>	<b>EPF10K100EFC256-2X</b>	<b>EPF10K100ARC240-3N</b>	<b>EPF10K100AFC484-2</b>
Intel IC FPGA 191 I/O 256FBGA	Intel IC FPGA 191 I/O 256FBGA	Altera IC FPGA 369 I/O 484FBGA	Intel IC FPGA 191 I/O 256FBGA	Intel IC FPGA 189 I/O 240RQFP	Intel IC FPGA 369 I/O 484FBGA
					
<b>EPF10K100ARI240-3N</b>	<b>EPF10K100ARC240-3</b>	<b>EPF10K100ARC240-1N</b>	<b>EPF10K100BQC240-3</b>	<b>EPF10K100AFC484-3</b>	<b>EPF10K100EBC356-3</b>
Intel IC FPGA 189 I/O 240RQFP	Intel IC FPGA 189 I/O 240RQFP	Intel IC FPGA 189 I/O 240RQFP	Altera LOADABLE PLD, 14.5NS PQFP240	Intel IC FPGA 369 I/O 484FBGA	Intel IC FPGA 274 I/O 356BGA

## Shipment

### Delivery Time

In-stock items can be shipped within 24 hours. Some parts will be arranged for delivery within 1-2 days from the date all items arrive at our warehouse. And Allelco ships order once a day at about 17:00, except Sunday. Once the goods are shipped, the estimated delivery time depends on the shipping methods and Delivery destination. The table below shows are the logistic time for some common countries.

### Delivery Cost

> Use your express account for shipment if you have one.

> Use our account for the shipment. Refer to the table below for the approximate charges.

(Different time frame / countries / package size has different price.)

### Delivery Method

> Global Common Shipment by DHL / UPS / FedEx / TNT / EMS / SF we support.

> Others more shipping ways, please get in touch with your customer manager.

Common Countries Logistic Time Reference		
Region	Country	Logistic Time(Day)
America	United States	5
	Brazil	7
Europe	Germany	5
	United Kingdom	4
	Italy	5
Oceania	Australia	6
	New Zealand	7
Asia	India	6
	Japan	7
Middle East	Israel	6

DHL & FedEx Shipment Charges Reference	
Shipment charges(KG)	Reference DHL(USD\$)
0.00kg-1.00kg	USD\$60.00
1.00kg-2.00kg	USD\$70.00
2.00kg-3.00kg	USD\$80.00

Note: The above table is for reference only. There may have some data bias for the uncontrollable factors.

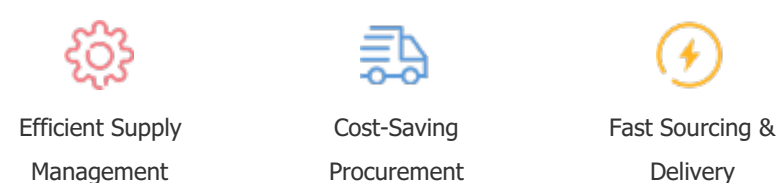
Contact us if you have any questions.

## Payment Support

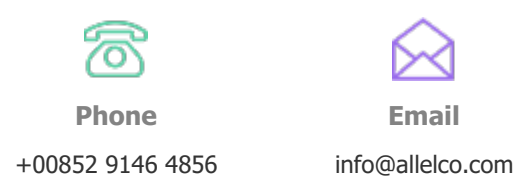
The payment method can be chosen from the methods shown below:  
Wire Transfer (T/T, Bank Transfer), Western Union, Credit card,  
PayPal.



## Your Faithful Supply Chain Partner -



Contact us if you have any questions.



## Certifications & Memberships



View More