



Image may be representation.
See specifications for product details.



SS26-E3/52T

Manufacturer Part Number	SS26-E3/52T
Manufacturer	Vishay General Semiconductor – Diodes Division
Allelco Part Number	32D-SS26-E3/52T
ECAD Model	PCB Symbol, Footprint & 3D Model
Parts Description	DIODE SCHOTTKY 60V 2A DO214AA
Package	DO-214AA, SMB
Data sheet	SS22 thru SS26.pdf
RoHs Status	ROHS3 Compliant

[Get a Quote](#)

SS26-E3/52T - Vishay General Semiconductor - Diodes Division. New Original in Stock. Download Linear Technology SS26-E3/52T datasheet/specifications on AllelcoElec.com.
Request a quote for SS26-E3/52T, please send us email: info@allelco.com

Specifications

SS26-E3/52T Tech Specifications

SS26-E3/52T - Vishay General Semiconductor - Diodes Division technical specifications, attributes, parameters

Product Attribute	Attribute Value	Product Attribute	Attribute Value
Manufacturer	Vishay General Semiconductor – Diodes Division	Package	Tape & Reel (TR)
Voltage - Forward (Vf) (Max) @ If	700 mV @ 2 A	Operating Temperature - Junction	-65°C ~ 125°C
Voltage - DC Reverse (Vr) (Max)	60 V	Mounting Type	Surface Mount
Technology	Schottky	Current - Reverse Leakage @ Vr	400 µA @ 60 V
Supplier Device Package	DO-214AA (SMB)	Current - Average Rectified (Io)	2A
Speed	Fast Recovery =< 500ns, > 200mA (Io)	Capacitance @ Vr, F	-
Series	-	Base Product Number	SS26
Package / Case	DO-214AA, SMB		

Parts with Similar Specifications

The three parts on the right have similar specifications to Vishay General Semiconductor - Diodes Division SS26-E3/52T

Product Attribute				
Part Number	SS26-E3/52T	SS26-TP	SS25HE3/52T	SS26-E3/5BT
Manufacturer	Vishay General Semiconductor - Diodes Division	Micro Commercial Co	Vishay General Semiconductor - Diodes Division	Vishay General Semiconductor - Diodes Division
Supplier Device Package	DO-214AA (SMB)	DO-214AC (SMA)	DO-214AA (SMB)	DO-214AA (SMB)
Current - Average Rectified (Io)	2A	2A	2A	2A
Capacitance @ Vr, F	-	-	-	-
Series	-	-	-	-
Base Product Number	SS26	SS26	SS25	SS26
Speed	Fast Recovery =< 500ns, > 200mA (Io)	Fast Recovery =< 500ns, > 200mA (Io)	Fast Recovery =< 500ns, > 200mA (Io)	Fast Recovery =< 500ns, > 200mA (Io)
Operating Temperature - Junction	-65°C ~ 125°C	-55°C ~ 125°C	-65°C ~ 125°C	-65°C ~ 125°C
Package / Case	DO-214AA, SMB	DO-214AC, SMA	DO-214AA, SMB	DO-214AA, SMB
Voltage - Forward (Vf) (Max) @ If	700 mV @ 2 A	700 mV @ 2 A	700 mV @ 2 A	700 mV @ 2 A
Package	Tape & Reel (TR)	Tape & Reel (TR)	Tape & Reel (TR)	Tape & Reel (TR)
Technology	Schottky	Schottky	Schottky	Schottky
Current - Reverse Leakage @ Vr	400 µA @ 60 V	500 µA @ 60 V	400 µA @ 50 V	400 µA @ 60 V
Mounting Type	Surface Mount	Surface Mount	Surface Mount	Surface Mount
Voltage - DC Reverse (Vr) (Max)	60 V	60 V	50 V	60 V

SS26-E3/52T Datasheet PDF

Download SS26-E3/52T pdf datasheets and Vishay General Semiconductor - Diodes Division documentation for SS26-E3/52T - Vishay General Semiconductor - Diodes Division.

Datasheets

[SS22 thru SS26.pdf](#)

PCN Assembly/Origin

[PCN-DD-003-2023-REV-0 3/24/23.pdf](#)

Customers Also Interested in

Recommended Products

SS26-E2/5T	SS26-TP	SS26BG	SS25HE3/52T	SS26-TR13	SS26-E3
Electro-Films (EFI) / Vishay	Micro Commercial Co DIODE SCHOTTKY 60V 2A DO214AC	SHIKUES	Vishay General Semiconductor - Diodes Division DIODE SCHOTTKY 50V 2A DO214AA	STL	VISHAYMAS



SS26BF
SHIKUES



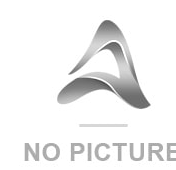
SS26-E3/5T
Electro-Films (EFI) / Vishay



SS26-E3/5BT
Vishay General Semiconductor - Diodes Division
DIODE SCHOTTKY 60V 2A DO214AA



SS26-LTP
Micro Commercial Co
DIODE SCHOTTKY 60V 2A DO214AC



SS26 T/R
PANJIT



SS26-E3/62T
Electro-Films (EFI) / Vishay



SS26 R5
Taiwan Semiconductor



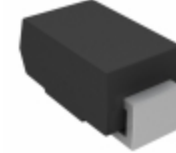
SS26-E3/52
Electro-Films (EFI) / Vishay



SS25HE3/5BT
Vishay General Semiconductor - Diodes Division
DIODE SCHOTTKY 50V 2A DO214AA



SS26/R4



SS25S-E3/61T
Vishay General Semiconductor - Diodes Division
DIODE SCHOTTKY 50V 2A DO214AC



SS26 2K/R

Shipment

Delivery Time

In-stock items can be shipped within 24 hours. Some parts will be arranged for delivery within 1-2 days from the date all items arrive at our warehouse. And Allelco ships order once a day at about 17:00, except Sunday. Once the goods are shipped, the estimated delivery time depends on the shipping methods and Delivery destination. The table below shows are the logistic time for some common countries.

Delivery Cost

- > Use your express account for shipment if you have one.
- > Use our account for the shipment. Refer to the table below for the approximate charges.
(Different time frame / countries / package size has different price.)

Delivery Method

- > Global Common Shipment by DHL / UPS / FedEx / TNT / EMS / SF we support.
- > Others more shipping ways, please get in touch with your customer manager.

Common Countries Logistic Time Reference

Region	Country	Logistic Time(Day)
America	United States	5
	Brazil	7
Europe	Germany	5
	United Kingdom	4
	Italy	5
Oceania	Australia	6
	New Zealand	7
Asia	India	6
	Japan	7
Middle East	Israel	6

DHL & FedEx Shipment Charges Reference

Shipment charges(KG)	Reference DHL(USD\$)
0.00kg-1.00kg	USD\$60.00
1.00kg-2.00kg	USD\$70.00
2.00kg-3.00kg	USD\$80.00

Note: The above table is for reference only. There may have some data bias for the uncontrollable factors.
Contact us if you have any questions.

Payment Support

The payment method can be chosen from the methods shown below:
Wire Transfer (T/T, Bank Transfer), Western Union, Credit card, PayPal.



Your Faithful Supply Chain Partner -

- Efficient Supply Management
- Cost-Saving Procurement
- Fast Sourcing & Delivery

Contact us if you have any questions.

- Phone
+00852 9146 4856
- Email
info@allelco.com

Certifications & Memberships



[View More](#)



Contact us

Address: Flat/Rm C 13/F Harvard Commercial Building 105-111 Thomson Road, Wan Chai, Hong Kong
Phone: +00852 9146 4856
Fax: +00852 3010 8510
Email: info@Allelco.com