



Image may be representation.
See specifications for product details.



MAX489EPD+

Manufacturer Part Number	MAX489EPD+
Manufacturer	Maxim Integrated
Allelco Part Number	32D-MAX489EPD+
ECAD Model	Request Free CAD Models
Parts Description	IC TRANSCEIVER FULL 1/1 14DIP
Package	14-DIP (0.300", 7.62mm)
Data sheet	MAX481/3/5, MAX487-91, MAX1487.pdf
RoHs Status	ROHS3 Compliant

Get a Quote

MAX489EPD+ - Analog Devices Inc./Maxim Integrated.New Original in Stock. Download Linear Technology MAX489EPD+ datasheet/specifications on AllelcoElec.com. Request a quote for MAX489EPD+, please send us email: info@allelco.com

Specifications

MAX489EPD+ Tech Specifications

MAX489EPD+ - Analog Devices Inc./Maxim Integrated technical specifications, attributes, parameters

Product Attribute	Attribute Value	Product Attribute	Attribute Value
Manufacturer	Maxim Integrated	Package	Tube
Voltage - Supply	4.75V ~ 5.25V	Operating Temperature	-40°C ~ 85°C
Type	Transceiver	Number of Drivers/Receivers	1/1
Supplier Device Package	14-PDIP	Mounting Type	Through Hole
Series	-	Duplex	Full
Receiver Hysteresis	70 mV	Data Rate	250kbps
Protocol	RS422, RS485	Base Product Number	MAX489
Package / Case	14-DIP (0.300", 7.62mm)		

Parts with Similar Specifications

The three parts on the right have similar specifications to Analog Devices Inc./Maxim Integrated MAX489EPD+

Product Attribute				
Part Number	MAX489EPD+	MAX489ECPD+	MAX489ECSO	MAX489ESD+
Manufacturer	Analog Devices Inc./Maxim Integrated	Analog Devices Inc./Maxim Integrated	Analog Devices Inc./Maxim Integrated	Analog Devices Inc./Maxim Integrated
Series	-	-	-	-
Voltage - Supply	4.75V ~ 5.25V	4.75V ~ 5.25V	4.75V ~ 5.25V	4.75V ~ 5.25V
Operating Temperature	-40°C ~ 85°C	0°C ~ 70°C	0°C ~ 70°C	-40°C ~ 85°C
Supplier Device Package	14-PDIP	14-PDIP	14-SOIC	14-SOIC
Base Product Number	MAX489	MAX489	MAX489	MAX489
Receiver Hysteresis	70 mV	70 mV	70 mV	70 mV
Protocol	RS422, RS485	RS422, RS485	RS422, RS485	RS422, RS485
Type	Transceiver	Transceiver	Transceiver	Transceiver
Package / Case	14-DIP (0.300", 7.62mm)	14-DIP (0.300", 7.62mm)	14-SOIC (0.154", 3.90mm Width)	14-SOIC (0.154", 3.90mm Width)
Duplex	Full	Full	Full	Full
Mounting Type	Through Hole	Through Hole	Surface Mount	Surface Mount
Package	Tube	Tube	Tube	Tube
Data Rate	250kbps	250kbps	250kbps	250kbps
Number of Drivers/Receivers	1/1	1/1	1/1	1/1

MAX489EPD+ Datasheet PDF

Download MAX489EPD+ pdf datasheets and Analog Devices Inc./Maxim Integrated documentation for MAX489EPD+ - Analog Devices Inc./Maxim Integrated.

Datasheets

[MAX481/3/5, MAX487-91, MAX1487.pdf](#)

Environmental Information

[Maxim Integrated REACH.pdf](#)

[Maxim Integrated RoHS Cert.pdf](#)

Part Numbering Guide

[Part Numbering System.pdf](#)

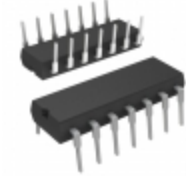
Application Notes

[FAQs about Interface, RS-232, and RS-485 Circuits.pdf](#)

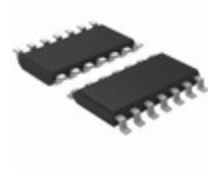
[Explanation of Maxim RS-485 Features.pdf](#)

Customers Also Interested in

Recommended Products

**MAX489ECPD+**Analog Devices Inc./Maxim Integrated
IC TRANSCEIVER FULL 1/1 14DIP**MAX489ECSD**Analog Devices Inc./Maxim Integrated
IC TRANSCEIVER FULL 1/1 14SOIC**MAX489ESD+**Analog Devices Inc./Maxim Integrated
IC TRANSCEIVER FULL 1/1 14SOIC**MAX489MJD**Analog Devices Inc./Maxim Integrated
IC TRANSCEIVER FULL 1/1 14CDIP**MAX4901ETA+T**Analog Devices Inc./Maxim Integrated
IC SWITCH DUAL SPST 8TDFN**MAX489EPD**Analog Devices Inc./Maxim Integrated
IC TRANSCEIVER FULL 1/1 14DIP**MAX4901EBL+T**Analog Devices Inc./Maxim Integrated
IC SWITCH DUAL SPST 9UCSP**MAX489ESD+T**Analog Devices Inc./Maxim Integrated
IC TRANSCEIVER FULL 1/1 14SOIC**MAX489ESD**Analog Devices Inc./Maxim Integrated
RS-485/RS-422 TRANSCVR**MAX489EESD**Analog Devices Inc./Maxim Integrated
IC TRANSCEIVER FULL 1/1 14SOIC**MAX489MJD/883**

Analog Devices / Maxim Integrated

MAX489EESD+Analog Devices Inc./Maxim Integrated
IC TRANSCEIVER FULL 1/1 14SOIC**MAX489ECPD**Analog Devices Inc./Maxim Integrated
IC TRANSCEIVER FULL 1/1 14DIP**MAX489EESD+T**Analog Devices Inc./Maxim Integrated
IC TRANSCEIVER FULL 1/1 14SOIC**MAX489ECSD+T**Analog Devices Inc./Maxim Integrated
IC TRANSCEIVER FULL 1/1 14SOIC**MAX4903ETA+T**Analog Devices Inc./Maxim Integrated
IC SWITCH SNGL SPDT 8TDFN**MAX489ECSD+**Analog Devices Inc./Maxim Integrated
IC TRANSCEIVER FULL 1/1 14SOIC**MAX489EEDP**Analog Devices Inc./Maxim Integrated
RS-485/RS-422 TRANSCVR

Shipment

Delivery Time

In-stock items can be shipped within 24 hours. Some parts will be arranged for delivery within 1-2 days from the date all items arrive at our warehouse. And Allelco ships order once a day at about 17:00, except Sunday. Once the goods are shipped, the estimated delivery time depends on the shipping methods and Delivery destination. The table below shows are the logistic time for some common countries.

Delivery Cost

> Use your express account for shipment if you have one.

> Use our account for the shipment. Refer to the table below for the approximate charges.

(Different time frame / countries / package size has different price.)

Delivery Method

> Global Common Shipment by DHL / UPS / FedEx / TNT / EMS / SF we support.

> Others more shipping ways, please get in touch with your customer manager.

Common Countries Logistic Time Reference		
Region	Country	Logistic Time(Day)
America	United States	5
	Brazil	7
Europe	Germany	5
	United Kingdom	4
	Italy	5
Oceania	Australia	6
	New Zealand	7
Asia	India	6
	Japan	7
Middle East	Israel	6

DHL & FedEx Shipment Charges Reference	
Shipment charges(KG)	Reference DHL(USD\$)
0.00kg-1.00kg	USD\$60.00
1.00kg-2.00kg	USD\$70.00
2.00kg-3.00kg	USD\$80.00

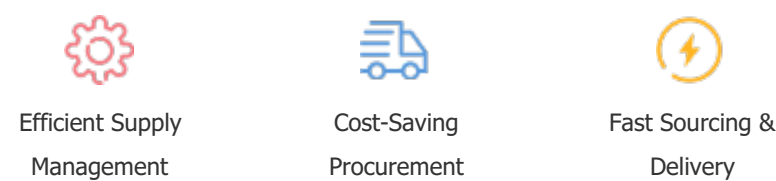
Note: The above table is for reference only. There may have some data bias for the uncontrollable factors.
Contact us if you have any questions.

Payment Support

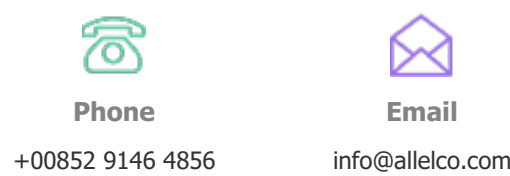
The payment method can be chosen from the methods shown below:
Wire Transfer (T/T, Bank Transfer), Western Union, Credit card, PayPal.



Your Faithful Supply Chain Partner -



Contact us if you have any questions.



Certifications & Memberships



[View More](#)