



# BAT54-06E6327

Manufacturer Part Number **BAT54-06E6327**

Manufacturer **Infineon Technologies**

Allelco Part Number **32D-BAT54-06E6327**

ECAD Model Request Free CAD Models

Parts Description **RECTIFIER DIODE, SCHOTTKY**

Package **TO-236-3, SC-59, SOT-23-3**

Data sheet [BAT54-06E6327.pdf](#)



**Get a Quote**

BAT54-06E6327 - Infineon Technologies. New Original in Stock. Download Linear Technology BAT54-06E6327 datasheet/specifications on AllelcoElec.com.  
Request a quote for BAT54-06E6327, please send us email: [info@allelco.com](mailto:info@allelco.com)

## Specifications

BAT54-06E6327 Tech Specifications

BAT54-06E6327 - Infineon Technologies technical specifications, attributes, parameters

Product Attribute	Attribute Value	Product Attribute	Attribute Value
Manufacturer	Infineon Technologies	Package / Case	TO-236-3, SC-59, SOT-23-3
Voltage - Forward (Vf) (Max) @ If	800 mV @ 100 mA	Package	Bulk
Voltage - DC Reverse (Vr) (Max)	30 V	Operating Temperature - Junction	150°C
Technology	Schottky	Mounting Type	Surface Mount
Supplier Device Package	PG-SOT23-3-3	Diode Configuration	1 Pair Common Anode
Speed	Small Signal =< 200mA (Io), Any Speed	Current - Reverse Leakage @ Vr	2 µA @ 25 V
Series	-	Current - Average Rectified (Io) (per Diode)	200mA (DC)
Reverse Recovery Time (trr)	5 ns	Base Product Number	BAT54

## Parts with Similar Specifications

The three parts on the right have similar specifications to Infineon Technologies BAT54-06E6327

Product Attribute	NO PICTURE			
Part Number	BAT54-06E6327	BAT54-05E6327	BAT54-05WE6327	BAT54-7
Manufacturer	Infineon Technologies	Infineon Technologies	Cypress Semiconductor (Infineon Technologies)	Diodes Incorporated
Diode Configuration	1 Pair Common Anode	1 Pair Common Cathode	-	-
Supplier Device Package	PG-SOT23-3-3	PG-SOT23-3-3	-	SOT-23-3
Package / Case	TO-236-3, SC-59, SOT-23-3	TO-236-3, SC-59, SOT-23-3	-	TO-236-3, SC-59, SOT-23-3
Technology	Schottky	Schottky	-	Schottky
Speed	Small Signal =< 200mA (Io), Any Speed	Small Signal =< 200mA (Io), Any Speed	-	Small Signal =< 200mA (Io), Any Speed
Base Product Number	BAT54	BAT54	-	BAT54
Reverse Recovery Time (trr)	5 ns	5 ns	-	5 ns
Current - Reverse Leakage @ Vr	2 µA @ 25 V	2 µA @ 25 V	-	2 µA @ 25 V
Voltage - DC Reverse (Vr) (Max)	30 V	30 V	-	30 V
Mounting Type	Surface Mount	Surface Mount	-	Surface Mount
Operating Temperature - Junction	150°C	150°C	-	-65°C ~ 150°C
Voltage - Forward (Vf) (Max) @ If	800 mV @ 100 mA	800 mV @ 100 mA	-	800 mV @ 100 mA
Current - Average Rectified (Io) (per Diode)	200mA (DC)	200mA (DC)	-	-
Package	Bulk	Bulk	-	Tape & Reel (TR)
Series	-	-	-	-

## Customers Also Interested in

### Recommended Products



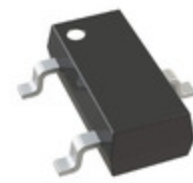
**BAT54-05WE6327**  
Cypress Semiconductor (Infineon Technologies)



**BAT54-7**  
Diodes Incorporated  
DIODE SCHOTTKY 30V 200MA SOT23-3



**BAT54-06 E6327**  
Cypress Semiconductor (Infineon Technologies)



**BAT54-7-F-31**  
Diodes Incorporated  
DIODE SCHOTTKY 30V 200MA SOT23-3



**BAT54-06WH6327**  
INFINEONROHS



**BAT54-06**  
Cypress Semiconductor (Infineon Technologies)



**BAT54-05 E6327**  
Cypress Semiconductor (Infineon Technologies)



**BAT54-7-G-55**  
Diodes Incorporated



**BAT54-06W E6327**  
Cypress Semiconductor (Infineon Technologies)



**BAT54-06 H6327**  
Cypress Semiconductor (Infineon Technologies)



**BAT54-7-G**  
Diodes Incorporated  
DIODE SCHOTTKY 30V 200MA SOT23-3



**BAT54-06(BAT54A)**  
INF



**BAT54-05 H6327**Cypress Semiconductor  
(Infineon Technologies)**BAT54-7-F**Diodes Incorporated  
DIODE SCHOTTKY 30V 200MA  
SOT23-3**BAT54-05W E6327**Cypress Semiconductor  
(Infineon Technologies)**BAT54-06 B5003**Cypress Semiconductor  
(Infineon Technologies)**BAT54-E3-08**Vishay General Semiconductor -  
Diodes Division  
DIODE SCHOTTKY 30V 200MA  
SOT23-3**BAT54-05E6327**Infineon Technologies  
SCHOTTKY DIODE

## Shipment

### Delivery Time

In-stock items can be shipped within 24 hours. Some parts will be arranged for delivery within 1-2 days from the date all items arrive at our warehouse. And Allelco ships order once a day at about 17:00, except Sunday. Once the goods are shipped, the estimated delivery time depends on the shipping methods and Delivery destination. The table below shows are the logistic time for some common countries.

### Delivery Cost

> Use your express account for shipment if you have one.

> Use our account for the shipment. Refer to the table below for the approximate charges.

(Different time frame / countries / package size has different price.)

### Delivery Method

> Global Common Shipment by DHL / UPS / FedEx / TNT / EMS / SF we support.

> Others more shipping ways, please get in touch with your customer manager.

Common Countries Logistic Time Reference		
Region	Country	Logistic Time(Day)
America	United States	5
	Brazil	7
Europe	Germany	5
	United Kingdom	4
	Italy	5
Oceania	Australia	6
	New Zealand	7
Asia	India	6
	Japan	7
Middle East	Israel	6

DHL & FedEx Shipment Charges Reference	
Shipment charges(KG)	Reference DHL(USD\$)
0.00kg-1.00kg	USD\$60.00
1.00kg-2.00kg	USD\$70.00
2.00kg-3.00kg	USD\$80.00

**Note:** The above table is for reference only. There may have some data bias for the uncontrollable factors.

Contact us if you have any questions.

## Payment Support

The payment method can be chosen from the methods shown below:

Wire Transfer (T/T, Bank Transfer), Western Union, Credit card, PayPal.



## Your Faithful Supply Chain Partner -



Efficient Supply  
Management



Cost-Saving  
Procurement



Fast Sourcing &  
Delivery

Contact us if you have any questions.



Phone

+00852 9146 4856



Email

info@allelco.com

## Certifications & Memberships



[View More](#)

 **ALLELCO LIMITED**  
WWW.ALLELCOELEC.COM

### Contact us

Address: Flat/Rm C 13/F Harvard Commercial Building 105-111 Thomson Road, Wan Chai, Hong Kong

Phone: +00852 9146 4856

Fax: +00852 3010 8510

Email: info@Allelco.com

Copyright © 2012-2023 AllelcoElec.com. All rights reserved.