



Image may be representation.
See specifications for product details.



STGE50NC60WD

Manufacturer Part Number	STGE50NC60WD
Manufacturer	STMicroelectronics
Allelco Part Number	32D-STGE50NC60WD
ECAD Model	Request Free CAD Models
Parts Description	IGBT MOD 600V 100A 260W ISOTOP
Package	SOT-227-4, miniBLOC
Data sheet	STGE50NC60WD.pdf
RoHs Status	ROHS3 Compliant

Get a Quote

STGE50NC60WD - STMicroelectronics.New Original in Stock. Download Linear Technology STGE50NC60WD datasheet/specifications on AllelcoElec.com.
Request a quote for STGE50NC60WD, please send us email: info@allelco.com

Specifications

STGE50NC60WD Tech Specifications
STGE50NC60WD - STMicroelectronics technical specifications, attributes, parameters

Product Attribute	Attribute Value	Product Attribute	Attribute Value
Manufacturer	STMicroelectronics	NTC Thermistor	No
Voltage - Collector Emitter Breakdown (Max)	600 V	Mounting Type	Chassis Mount
Vce(on) (Max) @ Vge, Ic	2.6V @ 15V, 40A	Input Capacitance (Cies) @ Vce	4.7 nF @ 25 V
Supplier Device Package	ISOTOP	Input	Standard
Series	PowerMESH™	IGBT Type	-
Power - Max	260 W	Current - Collector Cutoff (Max)	500 µA
Package / Case	SOT-227-4, miniBLOC	Current - Collector (Ic) (Max)	100 A
Package	Tube	Configuration	Single
Operating Temperature	-55°C ~ 150°C (TJ)	Base Product Number	STGE50

Parts with Similar Specifications

The three parts on the right have similar specifications to STMicroelectronics STGE50NC60WD

Product Attribute				
Part Number	STGE50NC60WD	STGE50NC60VD	STGE50NB60HD	STGF10NC60HD
Manufacturer	STMicroelectronics	STMicroelectronics	STMicroelectronics	STMicroelectronics
IGBT Type	-	-	-	-
Current - Collector Cutoff (Max)	500 µA	150 µA	250 µA	-
Base Product Number	STGE50	STGE50	STGE50	STGF10
Series	PowerMESH™	PowerMESH™	PowerMESH™	PowerMESH™
Input	Standard	Standard	Standard	-
Current - Collector (Ic) (Max)	100 A	90 A	100 A	9 A
Package / Case	SOT-227-4, miniBLOC	SOT-227-4, miniBLOC	SOT-227-4, miniBLOC	TO-220-3 Full Pack
Operating Temperature	-55°C ~ 150°C (TJ)	-55°C ~ 150°C (TJ)	150°C (TJ)	-55°C ~ 150°C (TJ)
Input Capacitance (Cies) @ Vce	4.7 nF @ 25 V	4.55 nF @ 25 V	4.5 nF @ 25 V	-
Vce(on) (Max) @ Vge, Ic	2.6V @ 15V, 40A	2.5V @ 15V, 40A	2.8V @ 15V, 50A	2.5V @ 15V, 5A
Configuration	Single	Single	Single	-
Mounting Type	Chassis Mount	Chassis Mount	Chassis Mount	Through Hole
Supplier Device Package	ISOTOP	ISOTOP	ISOTOP	TO-220FP
Power - Max	260 W	260 W	300 W	24 W
Voltage - Collector Emitter Breakdown (Max)	600 V	600 V	600 V	600 V
Package	Tube	Tube	Tube	Tape & Reel (TR)
NTC Thermistor	No	No	No	-

STGE50NC60WD Datasheet PDF

Download STGE50NC60WD pdf datasheets and STMicroelectronics documentation for STGE50NC60WD - STMicroelectronics.

Datasheets

[STGE50NC60WD.pdf](#)

PCN Obsolescence/ EOL

[Mult IGBT OBS 21/Dec/2017.pdf](#)

PCN Assembly/Origin

[IGBT Front-end Line Transfer 1/Mar/2018.pdf](#)

Customers Also Interested in

Recommended Products



STGE50NC60VD

STMicroelectronics
IGBT MODULE 600V 90A 260W
ISOTOP



STGE50NB60HD

STMicroelectronics
IGBT MOD 600V 100A 300W ISOTOP



STGF10NC60HD

STMicroelectronics
IGBT 600V 9A 24W TO220FP



STGF0U2N100

STMicroelectronics



STGD7NC60HT4

STMicroelectronics
IGBT 600V 25A 70W DPAK



STGD8NC60KDT4

STMicroelectronics
IGBT 600V 15A 62W DPAK



STGD7NB60SD

IR



STGF15M65DF2

STMicroelectronics
TRENCH GATE FIELD-STOP IGBT M
SE



STGF14NC60KD

STMicroelectronics
IGBT 600V 11A 28W TO220FP



STGD8NC60KT4

STMicroelectronics
IGBT 600V 15A 62W DPAK



STGF10H60DF

STMicroelectronics
IGBT 600V 20A 30W TO220FP



STGF10NB60SD

STMicroelectronics
IGBT 600V 23A 25W TO220FP



STGD7NB60ST4

STMicroelectronics
IGBT 600V 15A 55W DPAK



STGD7NC60HT4 MOS

STMicroelectronics



STGF10M65DF2

STMicroelectronics
IGBT TRENCH 650V 20A TO220FP



STGF15H60DF

STMicroelectronics
IGBT 600V 30A 30W TO220FP



STGF19NC60HD

STMicroelectronics
IGBT 600V 16A 32W TO220FP



STGF10NC60KD

STMicroelectronics
IGBT 600V 9A 25W TO220FP

Shipment

Delivery Time

In-stock items can be shipped within 24 hours. Some parts will be arranged for delivery within 1-2 days from the date all items arrive at our warehouse. And Allelco ships order once a day at about 17:00, except Sunday. Once the goods are shipped, the estimated delivery time depends on the shipping methods and Delivery destination. The table below shows are the logistic time for some common countries.

Delivery Cost

> Use your express account for shipment if you have one.

> Use our account for the shipment. Refer to the table below for the approximate charges.

(Different time frame / countries / package size has different price.)

Delivery Method

> Global Common Shipment by DHL / UPS / FedEx / TNT / EMS / SF we support.

> Others more shipping ways, please get in touch with your customer manager.

Common Countries Logistic Time Reference		
Region	Country	Logistic Time(Day)
America	United States	5
	Brazil	7
Europe	Germany	5
	United Kingdom	4
	Italy	5
Oceania	Australia	6
	New Zealand	7
Asia	India	6
	Japan	7
Middle East	Israel	6

DHL & FedEx Shipment Charges Reference	
Shipment charges(KG)	Reference DHL(USD\$)
0.00kg-1.00kg	USD\$60.00
1.00kg-2.00kg	USD\$70.00
2.00kg-3.00kg	USD\$80.00

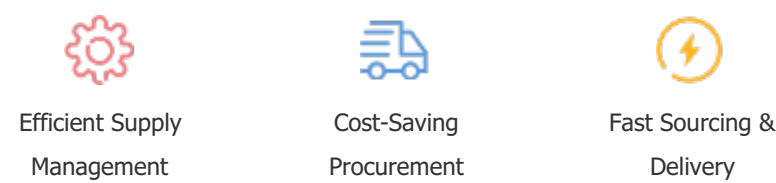
Note: The above table is for reference only. There may have some data bias for the uncontrollable factors.
Contact us if you have any questions.

Payment Support

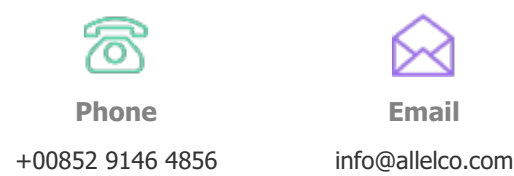
The payment method can be chosen from the methods shown below:
Wire Transfer (T/T, Bank Transfer), Western Union, Credit card,
PayPal.



Your Faithful Supply Chain Partner -



Contact us if you have any questions.



Certifications & Memberships



[View More](#)