



Image may be representation.  
See specifications for product details.



## MAX4460ESA+

Manufacturer Part Number	<b>MAX4460ESA+</b>
Manufacturer	<b>Maxim Integrated</b>
Allelco Part Number	32D-MAX4460ESA+
ECAD Model	Request Free CAD Models
Parts Description	IC INST AMP 1 CIRCUIT 8SOIC
Package	8-SOIC (0.154", 3.90mm Width)
Data sheet	MAX4460ESA+.pdf
RoHs Status	<b>ROHS3 Compliant</b>

**Get a Quote**

MAX4460ESA+ - Analog Devices Inc./Maxim Integrated.New Original in Stock. Download Linear Technology MAX4460ESA+ datasheet/specifications on AllelcoElec.com. Request a quote for MAX4460ESA+, please send us email: [info@allelco.com](mailto:info@allelco.com)

### Specifications

MAX4460ESA+ Tech Specifications

MAX4460ESA+ - Analog Devices Inc./Maxim Integrated technical specifications, attributes, parameters

Product Attribute	Attribute Value	Product Attribute	Attribute Value
Manufacturer	Maxim Integrated	Operating Temperature	-40°C ~ 85°C
Voltage - Supply Span (Min)	2.85 V	Number of Circuits	1
Voltage - Supply Span (Max)	5.25 V	Mounting Type	Surface Mount
Voltage - Input Offset	50 µV	Gain Bandwidth Product	2.5 MHz
Supplier Device Package	8-SOIC	Current - Supply	800µA
Slew Rate	0.5V/µs	Current - Output / Channel	150 mA
Series	-	Current - Input Bias	1 pA
Package / Case	8-SOIC (0.154", 3.90mm Width)	Base Product Number	MAX4460
Package	Tube	Amplifier Type	Instrumentation
Output Type	Rail-to-Rail		

### Parts with Similar Specifications

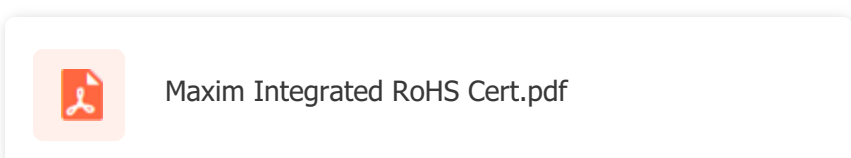
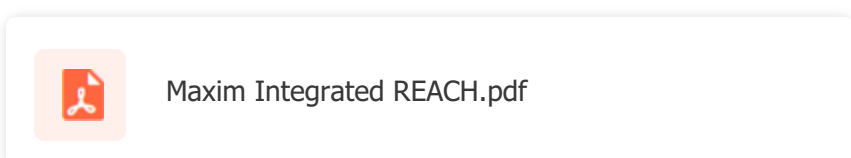
The three parts on the right have similar specifications to Analog Devices Inc./Maxim Integrated MAX4460ESA+

Product Attribute				
Part Number	MAX4460ESA+	MAX4462HEUT+T	MAX4460ETT+T	MAX4460EUT#TG16
Manufacturer	Analog Devices Inc./Maxim Integrated	Analog Devices Inc./Maxim Integrated	Analog Devices Inc./Maxim Integrated	Analog Devices Inc./Maxim Integrated
Number of Circuits	1	1	1	1
Supplier Device Package	8-SOIC	SOT-6	6-TDFN (3x3)	SOT-6
Gain Bandwidth Product	2.5 MHz	2.5 MHz	2.5 MHz	2.5 MHz
Series	-	-	-	-
Voltage - Supply Span (Min)	2.85 V	2.85 V	2.85 V	2.85 V
Package	Tube	Tape & Reel (TR)	Tape & Reel (TR)	Tape & Reel (TR)
Current - Output / Channel	150 mA	150 mA	150 mA	150 mA
Slew Rate	0.5V/µs	0.5V/µs	0.5V/µs	0.5V/µs
Base Product Number	MAX4460	MAX446	MAX4460	MAX4460
Current - Supply	800µA	800µA	800µA	800µA
Package / Case	8-SOIC (0.154", 3.90mm Width)	SOT-23-6	6-WDFN Exposed Pad	SOT-23-6
Operating Temperature	-40°C ~ 85°C	-40°C ~ 85°C	-40°C ~ 85°C	-40°C ~ 85°C
Mounting Type	Surface Mount	Surface Mount	Surface Mount	Surface Mount
Amplifier Type	Instrumentation	Instrumentation	Instrumentation	Instrumentation
Voltage - Supply Span (Max)	5.25 V	5.25 V	5.25 V	5.25 V
Current - Input Bias	1 pA	1 pA	1 pA	1 pA
Voltage - Input Offset	50 µV	100 µV	100 µV	100 µV
Output Type	Rail-to-Rail	Rail-to-Rail	Rail-to-Rail	Rail-to-Rail

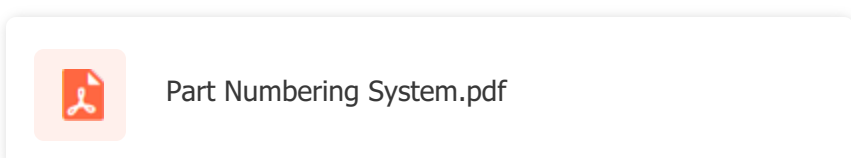
### MAX4460ESA+ Datasheet PDF

Download MAX4460ESA+ pdf datasheets and Analog Devices Inc./Maxim Integrated documentation for MAX4460ESA+ - Analog Devices Inc./Maxim Integrated.

#### Environmental Information

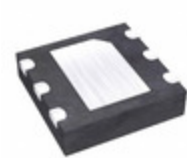


#### Part Numbering Guide



### Customers Also Interested in

#### Recommended Products

**MAX4462HEUT+T**Analog Devices Inc./Maxim Integrated  
IC INST AMP 1 CIRCUIT SOT23-6**MAX4460ETT+T**Analog Devices Inc./Maxim Integrated  
IC INST AMP 1 CIRCUIT 6TDFN**MAX4460EUT#TG16**Analog Devices Inc./Maxim Integrated  
IC INST AMP 1 CIRCUIT SOT6**MAX4464EXK+T**Analog Devices Inc./Maxim Integrated  
IC OPAMP GP 1 CIRCUIT SC70-5**MAX4456EQH+**

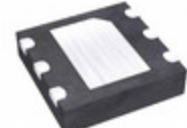
Analog Devices / Maxim Integrated

**MAX4456CQH+D**Analog Devices Inc./Maxim Integrated  
IC VIDEO CROSSPOINT SWIT 44PLCC**MAX4464EUK+T**Analog Devices Inc./Maxim Integrated  
IC OPAMP GP 1 CIRCUIT SOT23-5**MAX4456CPL+**Analog Devices Inc./Maxim Integrated  
IC VIDEO CROSSPOINT SWITCH 40DIP**MAX4462TEUT+T**Analog Devices Inc./Maxim Integrated  
IC INST AMP 1 CIRCUIT SOT6**MAX4456CQH**

Analog Devices / Maxim Integrated

**MAX4456EQH**

Analog Devices / Maxim Integrated

**MAX4460ESA+T**Analog Devices Inc./Maxim Integrated  
IC INST AMP 1 CIRCUIT 8SOIC**MAX4456EQH+D**Analog Devices Inc./Maxim Integrated  
IC VIDEO CROSSPOINT SWIT 44PLCC**MAX4462TETT+T**Analog Devices Inc./Maxim Integrated  
IC INST AMP 1 CIRCUIT 6TDFN**MAX4454EUD-T**

Analog Devices / Maxim Integrated

**MAX4456CPL**

Analog Devices / Maxim Integrated

**MAX4456CQH+**

Analog Devices / Maxim Integrated

**MAX4460EUT+**Maxim Integrated  
IC OPAMP INSTR 2.5MHZ SOT23-6

## Shipment

### Delivery Time

In-stock items can be shipped within 24 hours. Some parts will be arranged for delivery within 1-2 days from the date all items arrive at our warehouse. And Allelco ships order once a day at about 17:00, except Sunday. Once the goods are shipped, the estimated delivery time depends on the shipping methods and Delivery destination. The table below shows are the logistic time for some common countries.

### Delivery Cost

> Use your express account for shipment if you have one.

> Use our account for the shipment. Refer to the table below for the approximate charges.

(Different time frame / countries / package size has different price.)

### Delivery Method

> Global Common Shipment by DHL / UPS / FedEx / TNT / EMS / SF we support.

> Others more shipping ways, please get in touch with your customer manager.

**Common Countries Logistic Time Reference**

Region	Country	Logistic Time(Day)
America	United States	5
	Brazil	7
Europe	Germany	5
	United Kingdom	4
	Italy	5
Oceania	Australia	6
	New Zealand	7
Asia	India	6
	Japan	7
Middle East	Israel	6

**DHL & FedEx Shipment Charges Reference**

Shipment charges(KG)	Reference DHL(USD\$)
0.00kg-1.00kg	USD\$60.00
1.00kg-2.00kg	USD\$70.00
2.00kg-3.00kg	USD\$80.00

**Note:** The above table is for reference only. There may have some data bias for the uncontrollable factors.  
Contact us if you have any questions.

### Payment Support

The payment method can be chosen from the methods shown below:

Wire Transfer (T/T, Bank Transfer), Western Union, Credit card, PayPal.



### Your Faithful Supply Chain Partner -



Efficient Supply Management



Cost-Saving Procurement



Fast Sourcing & Delivery

Contact us if you have any questions.



Phone

+00852 9146 4856



Email

info@allelco.com

### Certifications & Memberships



[View More](#)

### Contact us

Address: Flat/Rm C 13/F Harvard Commercial Building 105-111 Thomson Road, Wan Chai, Hong Kong

Phone: +00852 9146 4856

Fax: +00852 3010 8510

Email: info@Allelco.com