



# XCKU095-2FFVA1156E

Manufacturer Part Number	<b>XCKU095-2FFVA1156E</b>
Manufacturer	<b>AMD Xilinx</b>
Allelco Part Number	32D-XCKU095-2FFVA1156E
ECAD Model	Request Free CAD Models
Parts Description	IC FPGA 520 I/O 1156FCBGA
Package	1156-BBGA, FCBGA
Data sheet	XCKU095-2FFVA1156E.pdf
RoHS Status	ROHS3 Compliant



**Get a Quote**

XCKU095-2FFVA1156E - AMD.New Original in Stock. Download Linear Technology XCKU095-2FFVA1156E datasheet/specifications on AllelcoElec.com.

Request a quote for XCKU095-2FFVA1156E, please send us email: [info@allelco.com](mailto:info@allelco.com)

## Specifications

XCKU095-2FFVA1156E Tech Specifications

XCKU095-2FFVA1156E - AMD technical specifications, attributes, parameters

Product Attribute	Attribute Value	Product Attribute	Attribute Value
Manufacturer	AMD Xilinx	Operating Temperature	0°C ~ 100°C (TJ)
Voltage - Supply	0.922V ~ 0.979V	Number of Logic Elements/Cells	1176000
Total RAM Bits	60518400	Number of LABs/CLBs	67200
Supplier Device Package	1156-FCBGA (35x35)	Number of I/O	520
Series	Kintex® UltraScale™	Mounting Type	Surface Mount
Package / Case	1156-BBGA, FCBGA	Base Product Number	XCKU095
Package	Tray		

## Parts with Similar Specifications

The three parts on the right have similar specifications to AMD XCKU095-2FFVA1156E

Product Attribute				
Part Number	XCKU095-2FFVA1156E	XCKU060-2FFVA1517I	XCKU095-1FFVA1156I	XCKU115-1FLVA1517I
Manufacturer	AMD	AMD	AMD	AMD
Package / Case	1156-BBGA, FCBGA	1517-BBGA, FCBGA	1156-BBGA, FCBGA	1517-BBGA, FCBGA
Operating Temperature	0°C ~ 100°C (TJ)	-40°C ~ 100°C (TJ)	-40°C ~ 100°C (TJ)	-40°C ~ 100°C (TJ)
Total RAM Bits	60518400	38912000	60518400	77721600
Supplier Device Package	1156-FCBGA (35x35)	1517-FCBGA (40x40)	1156-FCBGA (35x35)	1517-FCBGA (40x40)
Voltage - Supply	0.922V ~ 0.979V	0.922V ~ 0.979V	0.922V ~ 0.979V	0.922V ~ 0.979V
Number of Logic Elements/Cells	1176000	725550	1176000	1451100
Base Product Number	XCKU095	XCKU060	XCKU095	XCKU115
Package	Tray	Bulk	Tray	Tray
Number of I/O	520	624	520	624
Number of LABs/CLBs	67200	41460	67200	82920
Mounting Type	Surface Mount	Surface Mount	Surface Mount	Surface Mount
Series	Kintex® UltraScale™	Kintex® UltraScale™	Kintex® UltraScale™	Kintex® UltraScale™

## XCKU095-2FFVA1156E Datasheet PDF

Download XCKU095-2FFVA1156E pdf datasheets and AMD documentation for XCKU095-2FFVA1156E - AMD.

### Environmental Information

[Xilinx REACH211 Cert.pdf](#)

## Customers Also Interested in

### Recommended Products

<b>XCKU060-2FFVA1517I</b>	<b>XCKU095-1FFVA1156I</b>	<b>XCKU115-1FLVA1517I</b>	<b>XCKU060-3FFVA1156E</b>	<b>XCKU115-2FLVA1517I</b>	<b>XCKU095-2FFVC1517I</b>
AMD IC FPGA 624 I/O 1517FCBGA	AMD IC FPGA 520 I/O 1156FCBGA	AMD IC FPGA 624 I/O 1517FCBGA	AMD IC FPGA 520 I/O 1156FCBGA	AMD IC FPGA 624 I/O 1517FCBGA	AMD IC FPGA 520 I/O 1517FCBGA
<b>XCKU060-2FFVA1517E</b>	<b>XCKU115-1FLVA1517C</b>	<b>XCKU085-1FLVA1517I</b>	<b>XCKU085-2FLVA1517I</b>	<b>XCKU085-2FLVB1760I</b>	<b>XCKU060-2FFVA1156I</b>
AMD IC FPGA 624 I/O 1517FCBGA	AMD IC FPGA 624 I/O 1517FCBGA	AMD IC FPGA 624 I/O 1517FCBGA	AMD IC FPGA 624 I/O 1517FCBGA	AMD IC FPGA 676 I/O 1760FCBGA	AMD IC FPGA 520 I/O 1156FCBGA



**XCKU115-2FLVB2104I**

AMD  
IC FPGA 702 I/O 2104FCBGA

**XCKU085-3FLVA1517E**

AMD  
IC FPGA 624 I/O 1517FCBGA

**XCKU115-1FLVB2104I**

AMD  
IC FPGA 702 I/O 2104FCBGA

**XCKU115-2FLVA1517E**

AMD  
IC FPGA 624 I/O 1517FCBGA

**XCKU115-2FLVD1924I**

AMD  
IC FPGA 832 I/O 1924FCBGA

**XCKU115-1FLVF1924I**

AMD  
IC FPGA 728 I/O 1924FCBGA

## Shipment

### Delivery Time

In-stock items can be shipped within 24 hours. Some parts will be arranged for delivery within 1-2 days from the date all items arrive at our warehouse. And Allelco ships order once a day at about 17:00, except Sunday. Once the goods are shipped, the estimated delivery time depends on the shipping methods and Delivery destination. The table below shows are the logistic time for some common countries.

### Delivery Cost

> Use your express account for shipment if you have one.

> Use our account for the shipment. Refer to the table below for the approximate charges.

(Different time frame / countries / package size has different price.)

### Delivery Method

> Global Common Shipment by DHL / UPS / FedEx / TNT / EMS / SF we support.

> Others more shipping ways, please get in touch with your customer manager.

Common Countries Logistic Time Reference

Region	Country	Logistic Time(Day)
America	United States	5
	Brazil	7
Europe	Germany	5
	United Kingdom	4
	Italy	5
Oceania	Australia	6
	New Zealand	7
Asia	India	6
	Japan	7
Middle East	Israel	6

DHL & FedEx Shipment Charges Reference

Shipment charges(KG)	Reference DHL(USD\$)
0.00kg-1.00kg	USD\$60.00
1.00kg-2.00kg	USD\$70.00
2.00kg-3.00kg	USD\$80.00

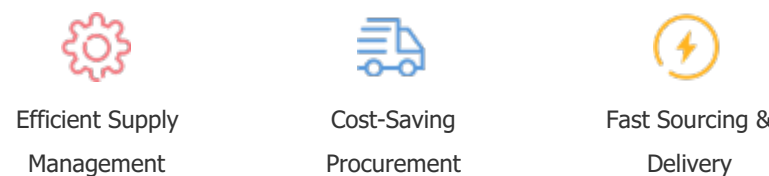
Note: The above table is for reference only. There may have some data bias for the uncontrollable factors.  
Contact us if you have any questions.

### Payment Support

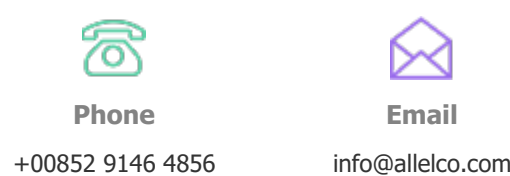
The payment method can be chosen from the methods shown below:  
Wire Transfer (T/T, Bank Transfer), Western Union, Credit card, PayPal.



### Your Faithful Supply Chain Partner -



Contact us if you have any questions.



### Certifications & Memberships



[View More](#)



### Contact us

Address: Flat/Rm C 13/F Harvard Commercial Building 105-111 Thomson Road, Wan Chai, Hong Kong  
Phone: +00852 9146 4856  
Fax: +00852 3010 8510  
Email: info@Allelco.com

Copyright © 2012-2023 AllelcoElec.com. All rights reserved.