

Image may be representation.
See specifications for product details.



MAX308CSE

Manufacturer Part Number	MAX308CSE
Manufacturer	Maxim Integrated
Allelco Part Number	32D-MAX308CSE
ECAD Model	Request Free CAD Models
Parts Description	IC MUX 8:1 100OHM 16SOIC
Package	16-SOIC (0.154", 3.90mm Width)
Data sheet	MAX308-09.pdf

Get a Quote

MAX308CSE - Analog Devices Inc./Maxim Integrated. New Original in Stock. Download Linear Technology MAX308CSE datasheet/specifications on AllelcoElec.com.
Request a quote for MAX308CSE, please send us email: info@allelco.com

Specifications

MAX308CSE Tech Specifications

MAX308CSE - Analog Devices Inc./Maxim Integrated technical specifications, attributes, parameters

Product Attribute	Attribute Value	Product Attribute	Attribute Value
Manufacturer	Maxim Integrated	Number of Circuits	1
Voltage - Supply, Single (V+)	5V ~ 30V	Multiplexer/Demultiplexer Circuit	8:1
Voltage - Supply, Dual (V±)	±5V ~ 20V	Mounting Type	Surface Mount
Switch Time (Ton, Toff) (Max)	150ns, 150ns	Current - Leakage (IS(off)) (Max)	750pA
Switch Circuit	-	Crosstalk	-92dB @ 100kHz
Supplier Device Package	16-SOIC	Charge Injection	2pC
Series	-	Channel-to-Channel Matching (ΔRon)	1.50hm
Package / Case	16-SOIC (0.154", 3.90mm Width)	Channel Capacitance (CS(off), CD(off))	3pF, 26pF
Package	Tube	Base Product Number	MAX308
Operating Temperature	0°C ~ 70°C (TA)	-3db Bandwidth	-
On-State Resistance (Max)	1000hm		

Parts with Similar Specifications

The three parts on the right have similar specifications to Analog Devices Inc./Maxim Integrated MAX308CSE

Product Attribute				
Part Number	MAX308CSE	MAX308CUE+	MAX308ESE	MAX308MJE
Manufacturer	Analog Devices Inc./Maxim Integrated	Analog Devices Inc./Maxim Integrated	Analog Devices Inc./Maxim Integrated	Analog Devices Inc./Maxim Integrated
Voltage - Supply, Single (V+)	5V ~ 30V	5V ~ 30V	5V ~ 30V	5V ~ 30V
-3db Bandwidth	-	-	-	-
Current - Leakage (IS(off)) (Max)	750pA	750pA	750pA	750pA
Operating Temperature	0°C ~ 70°C (TA)	0°C ~ 70°C (TA)	-40°C ~ 85°C (TA)	-55°C ~ 125°C (TA)
Package / Case	16-SOIC (0.154", 3.90mm Width)	16-TSSOP (0.173", 4.40mm Width)	16-SOIC (0.154", 3.90mm Width)	16-CDIP (0.300", 7.62mm)
Switch Time (Ton, Toff) (Max)	150ns, 150ns	150ns, 150ns	150ns, 150ns	150ns, 150ns
Channel-to-Channel Matching (ΔRon)	1.50hm	1.50hm	1.50hm	1.50hm
Package	Tube	Tube	Tube	Tube
Number of Circuits	1	1	1	1
On-State Resistance (Max)	1000hm	1000hm	1000hm	1000hm
Base Product Number	MAX308	MAX308	MAX308	MAX308
Switch Circuit	-	-	-	-
Channel Capacitance (CS(off), CD(off))	3pF, 26pF	3pF, 26pF	3pF, 26pF	3pF, 26pF
Crosstalk	-92dB @ 100kHz	-92dB @ 100kHz	-92dB @ 100kHz	-92dB @ 100kHz
Charge Injection	2pC	2pC	2pC	2pC
Series	-	-	-	-
Supplier Device Package	16-SOIC	16-TSSOP	16-SOIC	16-CDIP
Multiplexer/Demultiplexer Circuit	8:1	8:1	8:1	8:1
Voltage - Supply, Dual (V±)	±5V ~ 20V	±5V ~ 20V	±5V ~ 20V	±5V ~ 20V
Mounting Type	Surface Mount	Surface Mount	Surface Mount	Through Hole

MAX308CSE Datasheet PDF

Download MAX308CSE pdf datasheets and Analog Devices Inc./Maxim Integrated documentation for MAX308CSE - Analog Devices Inc./Maxim Integrated.

Datasheets

[MAX308-09.pdf](#)

Environmental Information

[Maxim Integrated REACH.pdf](#)

[Maxim Integrated RoHS Cert.pdf](#)

Part Numbering Guide

 Part Numbering System.pdf

PCN Obsolescence/ EOL

 Cylindrical Battery Holders.pdf

Customers Also Interested in

Recommended Products



MAX3089ECSD+T

Analog Devices Inc./Maxim Integrated
IC TRANSEIVER FULL 1/1 14SO



MAX308CUE+

Analog Devices Inc./Maxim Integrated
IC MUX 8:1 100OHM 16TSSOP



MAX308ESE

Analog Devices Inc./Maxim Integrated
IC MUX 8:1 100OHM 16SOIC



MAX308MJE

Analog Devices Inc./Maxim Integrated
IC MUX 8:1 100OHM 16CDIP



MAX308CSE+T

Analog Devices Inc./Maxim Integrated
IC MUX 8:1 100OHM 16SOIC



MAX308CPE

Analog Devices Inc./Maxim Integrated
IC MUX 8:1 100OHM 16DIP



MAX3089ESD+T

Analog Devices Inc./Maxim Integrated
IC TRANSEIVER FULL 1/1 14SOIC



MAX3089ESD+

Analog Devices Inc./Maxim Integrated
IC TRANSEIVER FULL 1/1 14SOIC



MAX3089EESD+T

Analog Devices Inc./Maxim Integrated
IC TRANSEIVER FULL 1/1 14SO



MAX308EPE

Analog Devices Inc./Maxim Integrated
IC MUX 8:1 100OHM 16DIP



MAX308CPE+

Analog Devices Inc./Maxim Integrated
IC MUX 8:1 100OHM 16DIP



MAX3089ESD

Analog Devices Inc./Maxim Integrated
RS-485/RS-422 TRANSCVR



MAX308ESE+T

Analog Devices Inc./Maxim Integrated
IC MUX 8:1 100OHM 16SOIC



MAX308EUE+T

Analog Devices Inc./Maxim Integrated
IC MUX 8:1 100OHM 16TSSOP



MAX308CUE+T

Analog Devices Inc./Maxim Integrated
IC MUX 8:1 100OHM 16TSSOP

Shipment

Delivery Time

In-stock items can be shipped within 24 hours. Some parts will be arranged for delivery within 1-2 days from the date all items arrive at our warehouse. And Allelco ships order once a day at about 17:00, except Sunday. Once the goods are shipped, the estimated delivery time depends on the shipping methods and Delivery destination. The table below shows are the logistic time for some common countries.

Delivery Cost

- > Use your express account for shipment if you have one.
 - > Use our account for the shipment. Refer to the table below for the approximate charges.
- (Different time frame / countries / package size has different price.)

Delivery Method

- > Global Common Shipment by DHL / UPS / FedEx / TNT / EMS / SF we support.
- > Others more shipping ways, please get in touch with your customer manager.

Common Countries Logistic Time Reference

Region	Country	Logistic Time(Day)
America	United States	5
	Brazil	7
Europe	Germany	5
	United Kingdom	4
	Italy	5
Oceania	Australia	6
	New Zealand	7
Asia	India	6
	Japan	7
Middle East	Israel	6

DHL & FedEx Shipment Charges Reference

Shipment charges(KG)	Reference DHL(USD\$)
0.00kg-1.00kg	USD\$60.00
1.00kg-2.00kg	USD\$70.00
2.00kg-3.00kg	USD\$80.00

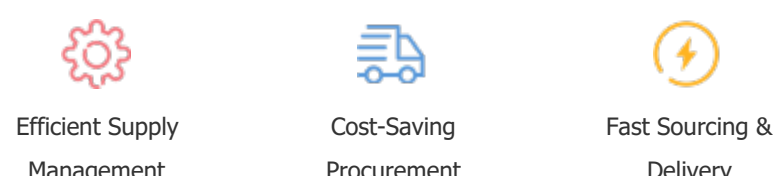
Note: The above table is for reference only. There may have some data bias for the uncontrollable factors.
Contact us if you have any questions.

Payment Support

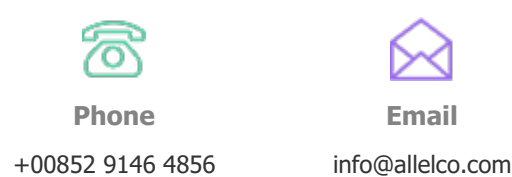
The payment method can be chosen from the methods shown below:
Wire Transfer (T/T, Bank Transfer), Western Union, Credit card, PayPal.



Your Faithful Supply Chain Partner -



Contact us if you have any questions.



Certifications & Memberships



View More

