

Image may be representation.
See specifications for product details.



MAX16819ATT+T

Manufacturer Part Number	MAX16819ATT+T
Manufacturer	Maxim Integrated
Allelco Part Number	32D-MAX16819ATT+T
ECAD Model	Request Free CAD Models
Parts Description	IC LED DRIVER CTRLR PWM 6TDFN
Package	6-WDFN Exposed Pad
Data sheet	MAX16820.pdf
RoHs Status	ROHS3 Compliant

Get a Quote

MAX16819ATT+T - Analog Devices Inc./Maxim Integrated.New Original in Stock. Download Linear Technology MAX16819ATT+T datasheet/specifications on AllelcoElec.com.
Request a quote for MAX16819ATT+T, please send us email: info@allelco.com

Specifications

MAX16819ATT+T Tech Specifications

MAX16819ATT+T - Analog Devices Inc./Maxim Integrated technical specifications, attributes, parameters

Product Attribute	Attribute Value	Product Attribute	Attribute Value
Manufacturer	Maxim Integrated	Operating Temperature	-40°C ~ 125°C (TA)
Voltage - Supply (Min)	4.5V	Number of Outputs	1
Voltage - Supply (Max)	28V	Mounting Type	Surface Mount
Voltage - Output	-	Internal Switch(s)	No
Type	DC DC Controller	Frequency	2MHz
Topology	Step-Down (Buck)	Dimming	PWM
Supplier Device Package	6-TDFN (3x3)	Current - Output / Channel	-
Series	-	Base Product Number	MAX16819
Package / Case	6-WDFN Exposed Pad	Applications	Lighting
Package	Tape & Reel (TR)		

Parts with Similar Specifications

The three parts on the right have similar specifications to Analog Devices Inc./Maxim Integrated MAX16819ATT+T

Product Attribute				
Part Number	MAX16819ATT+T	MAX16821BATI+T	MAX16820ATT+T	MAX16821AATI+T
Manufacturer	Analog Devices Inc./Maxim Integrated	Analog Devices Inc./Maxim Integrated	Analog Devices Inc./Maxim Integrated	Analog Devices Inc./Maxim Integrated
Series	-	-	-	-
Base Product Number	MAX16819	MAX16821	MAX16820	MAX16821
Operating Temperature	-40°C ~ 125°C (TA)	-40°C ~ 125°C (TA)	-40°C ~ 125°C (TA)	-40°C ~ 125°C (TA)
Current - Output / Channel	-	-	-	-
Dimming	PWM	PWM	PWM	PWM
Frequency	2MHz	125kHz ~ 1.5MHz	2MHz	125kHz ~ 1.5MHz
Supplier Device Package	6-TDFN (3x3)	28-TQFN (5x5)	6-TDFN (3x3)	28-TQFN (5x5)
Number of Outputs	1	1	1	1
Type	DC DC Controller	DC DC Controller	DC DC Controller	DC DC Controller
Package / Case	6-WDFN Exposed Pad	28-WFQFN Exposed Pad	6-WDFN Exposed Pad	28-WFQFN Exposed Pad
Voltage - Supply (Min)	4.5V	4.75V	4.5V	4.75V
Package	Tape & Reel (TR)	Tape & Reel (TR)	Tape & Reel (TR)	Tape & Reel (TR)
Mounting Type	Surface Mount	Surface Mount	Surface Mount	Surface Mount
Internal Switch(s)	No	No	No	No
Applications	Lighting	Backlight	Lighting	Backlight
Voltage - Supply (Max)	28V	28V	28V	28V
Voltage - Output	-	-	-	-
Topology	Step-Down (Buck)	SEPIC, Step-Down (Buck), Step-Up (Boost)	Step-Down (Buck)	SEPIC, Step-Down (Buck), Step-Up (Boost)

MAX16819ATT+T Datasheet PDF

Download MAX16819ATT+T pdf datasheets and Analog Devices Inc./Maxim Integrated documentation for MAX16819ATT+T - Analog Devices Inc./Maxim Integrated.

Datasheets

[MAX16820.pdf](#)

Environmental Information

[Maxim Integrated RoHS Cert.pdf](#)

[Material Declaration MAX16819ATT+T.pdf](#)

Part Numbering Guide

[Part Numbering System.pdf](#)

Application Notes



LEDs Allow New Remote-Controlled Lighting Applcat.pdf



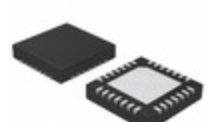
LEDs for General Lighting: What They Offer and The.pdf



Reference Design for a 5S2P AR111 Lamp LED Driver.pdf

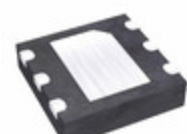
Customers Also Interested in

Recommended Products



MAX16821BATI+T

Analog Devices Inc./Maxim Integrated
IC LED DRIVER CTRLR PWM 28TQFN



MAX16820ATT+T

Analog Devices Inc./Maxim Integrated
IC LED DRIVER CTRLR PWM 6TDFN



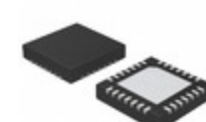
MAX16821BA

Analog Devices / Maxim Integrated



MAX16815ASA

Analog Devices / Maxim Integrated



MAX16821AATI+T

Analog Devices Inc./Maxim Integrated
IC LED DRIVER CTRLR PWM 28TQFN



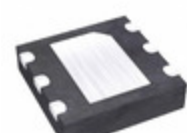
MAX1681ESA+T

Analog Devices Inc./Maxim Integrated
IC REG CHARGE PUMP INV 8SOIC



MAX1681ESA

Analog Devices Inc./Maxim Integrated
IC REG CHARGE PUMP INV 8SOIC



MAX16815ATT+T

Analog Devices Inc./Maxim Integrated
IC LED DRVR LIN PWM 100MA 6TDFN



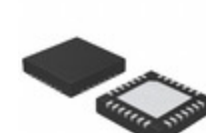
MAX1681ESA+

Analog Devices Inc./Maxim Integrated
IC REG CHARGE PUMP INV 8SOIC



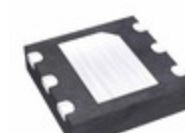
MAX16814UTP+T

Analog Devices / Maxim Integrated



MAX16821CATI+T

Analog Devices Inc./Maxim Integrated
IC LED DRIVER CTRLR PWM 28TQFN



MAX16820ATT+

Analog Devices Inc./Maxim Integrated
IC LED DRIVER CTRLR PWM 6TDFN



MAX16814UUP+

Analog Devices Inc./Maxim Integrated
IC LED DRVR CTRLR PWM 20TSSOP



MAX16814UUP+T

Analog Devices Inc./Maxim Integrated
IC LED DRVR CTRLR PWM 20TSSOP



MAX16814UUP+TG

Analog Devices / Maxim Integrated



MAX16814UUP+TCJ3

Analog Devices / Maxim Integrated



MAX16814UUP

Analog Devices / Maxim Integrated



MAX16815ASA+T

Analog Devices Inc./Maxim Integrated
IC LED DRVR LIN PWM 100MA 8SOIC

Shipment

Delivery Time

In-stock items can be shipped within 24 hours. Some parts will be arranged for delivery within 1-2 days from the date all items arrive at our warehouse. And Allelco ships order once a day at about 17:00, except Sunday. Once the goods are shipped, the estimated delivery time depends on the shipping methods and Delivery destination. The table below shows are the logistic time for some common countries.

Delivery Cost

> Use your express account for shipment if you have one.

> Use our account for the shipment. Refer to the table below for the approximate charges.

(Different time frame / countries / package size has different price.)

Delivery Method

> Global Common Shipment by DHL / UPS / FedEx / TNT / EMS / SF we support.

> Others more shipping ways, please get in touch with your customer manager.

Common Countries Logistic Time Reference

Region	Country	Logistic Time(Day)
America	United States	5
	Brazil	7
Europe	Germany	5
	United Kingdom	4
	Italy	5
Oceania	Australia	6
	New Zealand	7
Asia	India	6
	Japan	7
Middle East	Israel	6

DHL & FedEx Shipment Charges Reference

Shipment charges(KG)	Reference DHL(USD\$)
0.00kg-1.00kg	USD\$60.00
1.00kg-2.00kg	USD\$70.00
2.00kg-3.00kg	USD\$80.00

Note: The above table is for reference only. There may have some data bias for the uncontrollable factors.

Contact us if you have any questions.

Payment Support

The payment method can be chosen from the methods shown below:

Wire Transfer (T/T, Bank Transfer), Western Union, Credit card, PayPal.



Your Faithful Supply Chain Partner -



Efficient Supply Management



Cost-Saving Procurement



Fast Sourcing & Delivery

Contact us if you have any questions.



Phone
+00852 9146 4856



Email
info@allelco.com

Certifications & Memberships



View More