

Image may be representation.
See specifications for product details.



MAX4051CSE+T

Manufacturer Part Number	MAX4051CSE+T
Manufacturer	Maxim Integrated
Allelco Part Number	32D-MAX4051CSE+T
ECAD Model	Request Free CAD Models
Parts Description	IC MUX 8:1 100OHM 16SOIC
Package	16-SOIC (0.154", 3.90mm Width)
Data sheet	MAX4051(A)-53(A).pdf
RoHs Status	ROHS3 Compliant

Get a Quote

MAX4051CSE+T - Analog Devices Inc./Maxim Integrated.New Original in Stock. Download Linear Technology MAX4051CSE+T datasheet/specifications on AllelcoElec.com. Request a quote for MAX4051CSE+T, please send us email: info@allelco.com

Specifications

MAX4051CSE+T Tech Specifications
MAX4051CSE+T - Analog Devices Inc./Maxim Integrated technical specifications, attributes, parameters

Product Attribute	Attribute Value	Product Attribute	Attribute Value
Manufacturer	Maxim Integrated	Number of Circuits	1
Voltage - Supply, Single (V+)	2V ~ 16V	Multiplexer/Demultiplexer Circuit	8:1
Voltage - Supply, Dual (V±)	±2.7V ~ 8V	Mounting Type	Surface Mount
Switch Time (Ton, Toff) (Max)	175ns, 150ns	Current - Leakage (IS(off)) (Max)	1nA
Switch Circuit	-	Crosstalk	-90dB @ 100kHz
Supplier Device Package	16-SOIC	Charge Injection	2pC
Series	-	Channel-to-Channel Matching (ΔRon)	120hm (Max)
Package / Case	16-SOIC (0.154", 3.90mm Width)	Channel Capacitance (CS(off), CD(off))	2pF, 2pF
Package	Tape & Reel (TR)	Base Product Number	MAX4051
Operating Temperature	0°C ~ 70°C (TA)	-3db Bandwidth	-
On-State Resistance (Max)	1000hm		

Parts with Similar Specifications

The three parts on the right have similar specifications to Analog Devices Inc./Maxim Integrated MAX4051CSE+T

Product Attribute				
Part Number	MAX4051CSE+T	MAX4052ACSE+T	MAX4051CEE	MAX4051ACSE+T
Manufacturer	Analog Devices Inc./Maxim Integrated	Analog Devices Inc./Maxim Integrated	Analog Devices Inc./Maxim Integrated	Analog Devices Inc./Maxim Integrated
Package	Tape & Reel (TR)	Tape & Reel (TR)	Tube	Tape & Reel (TR)
Switch Time (Ton, Toff) (Max)	175ns, 150ns	175ns, 150ns	175ns, 150ns	175ns, 150ns
Voltage - Supply, Single (V+)	2V ~ 16V	2V ~ 16V	2V ~ 16V	2V ~ 16V
Package / Case	16-SOIC (0.154", 3.90mm Width)	16-SOIC (0.154", 3.90mm Width)	16-SSOP (0.154", 3.90mm Width)	16-SOIC (0.154", 3.90mm Width)
Number of Circuits	1	2	1	1
Multiplexer/Demultiplexer Circuit	8:1	4:1	8:1	8:1
On-State Resistance (Max)	1000hm	1000hm	1000hm	1000hm
Series	-	-	-	-
Channel Capacitance (CS(off), CD(off))	2pF, 2pF	2pF, 2pF	2pF, 2pF	2pF, 2pF
Charge Injection	2pC	2pC	2pC	2pC
Voltage - Supply, Dual (V±)	±2.7V ~ 8V	±2.7V ~ 8V	±2.7V ~ 8V	±2.7V ~ 8V
Operating Temperature	0°C ~ 70°C (TA)	0°C ~ 70°C (TA)	0°C ~ 70°C (TA)	0°C ~ 70°C (TA)
Current - Leakage (IS(off)) (Max)	1nA	100pA	1nA	100pA
Channel-to-Channel Matching (ΔRon)	120hm (Max)	60hm (Max)	120hm (Max)	60hm (Max)
Base Product Number	MAX4051	MAX4052	MAX4051	MAX4051
-3db Bandwidth	-	-	-	-
Mounting Type	Surface Mount	Surface Mount	Surface Mount	Surface Mount
Switch Circuit	-	SP4T	-	-
Crosstalk	-90dB @ 100kHz	-90dB @ 100kHz	-90dB @ 100kHz	-90dB @ 100kHz
Supplier Device Package	16-SOIC	16-SOIC	16-QSOP	16-SOIC

MAX4051CSE+T Datasheet PDF

Download MAX4051CSE+T pdf datasheets and Analog Devices Inc./Maxim Integrated documentation for MAX4051CSE+T - Analog Devices Inc./Maxim Integrated.

Datasheets

[MAX4051\(A\)-53\(A\).pdf](#)

Environmental Information

[Maxim Integrated REACH.pdf](#)

[Maxim Integrated RoHS Cert.pdf](#)

Part Numbering Guide

 Part Numbering System.pdf

Application Notes

 Fan Speed Control Is Cool!.pdf

Customers Also Interested in

Recommended Products



MAX4052ACSE+T

Analog Devices Inc./Maxim Integrated
IC SWITCH SP4T X 2 100OHM 16SOIC



MAX4051CEE

Analog Devices Inc./Maxim Integrated
IC MUX 8:1 100OHM 16QSOP



MAX4051ACSE+T

Analog Devices Inc./Maxim Integrated
IC MUX 8:1 100OHM 16SOIC



MAX4051EEE+

Analog Devices Inc./Maxim Integrated
IC MUX 8:1 100OHM 16QSOP



MAX4051AEEE+

Analog Devices Inc./Maxim Integrated
IC MUX 8:1 100OHM 16QSOP



MAX4051EEE+T

Analog Devices Inc./Maxim Integrated
IC MUX 8:1 100OHM 16QSOP



MAX4051ESE+T

Analog Devices Inc./Maxim Integrated
IC MUX 8:1 100OHM 16SOIC



MAX4051CSE

Analog Devices Inc./Maxim Integrated
IC MUX 8:1 100OHM 16SOIC



MAX4051CPE+

Analog Devices Inc./Maxim Integrated
IC MULTIPLEXER 8X1 16DIP



MAX4051EEE

Analog Devices Inc./Maxim Integrated
IC MUX 8:1 100OHM 16QSOP



MAX4052ACSE

Analog Devices Inc./Maxim Integrated
IC SWITCH SP4T X 2 100OHM 16SOIC



MAX4051AESE+T

Analog Devices Inc./Maxim Integrated
IC MUX 8:1 100OHM 16SOIC



MAX4051CEE+T

Analog Devices Inc./Maxim Integrated
IC MUX 8:1 100OHM 16QSOP



MAX4051AESE

Analog Devices Inc./Maxim Integrated
IC MUX 8:1 100OHM 16QSOP



MAX4052AESE

Analog Devices Inc./Maxim Integrated
IC SWITCH SP4T X 2 100OHM 16SOIC



MAX4051AESE+T

Analog Devices Inc./Maxim Integrated
IC MUX 8:1 100OHM 16QSOP



MAX4051ESE

Analog Devices Inc./Maxim Integrated
IC MUX 8:1 100OHM 16SOIC



MAX4052ACEE+

Analog Devices Inc./Maxim Integrated
IC SWITCH SP4T X 2 100OHM 16QSOP

Shipment

Delivery Time

In-stock items can be shipped within 24 hours. Some parts will be arranged for delivery within 1-2 days from the date all items arrive at our warehouse. And Allelco ships order once a day at about 17:00, except Sunday. Once the goods are shipped, the estimated delivery time depends on the shipping methods and Delivery destination. The table below shows are the logistic time for some common countries.

Delivery Cost

- > Use your express account for shipment if you have one.
 - > Use our account for the shipment. Refer to the table below for the approximate charges.
- (Different time frame / countries / package size has different price.)

Delivery Method

- > Global Common Shipment by DHL / UPS / FedEx / TNT / EMS / SF we support.
- > Others more shipping ways, please get in touch with your customer manager.

Common Countries Logistic Time Reference

Region	Country	Logistic Time(Day)
America	United States	5
	Brazil	7
Europe	Germany	5
	United Kingdom	4
	Italy	5
Oceania	Australia	6
	New Zealand	7
Asia	India	6
	Japan	7
Middle East	Israel	6

DHL & FedEx Shipment Charges Reference

Shipment charges(KG)	Reference DHL(USD\$)
0.00kg-1.00kg	USD\$60.00
1.00kg-2.00kg	USD\$70.00
2.00kg-3.00kg	USD\$80.00

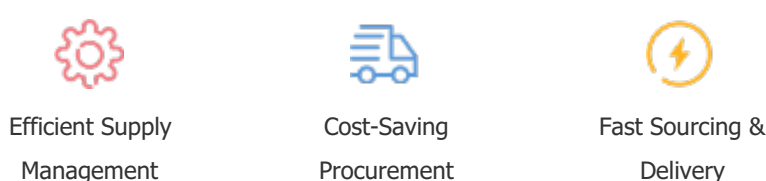
Note: The above table is for reference only. There may have some data bias for the uncontrollable factors. Contact us if you have any questions.

Payment Support

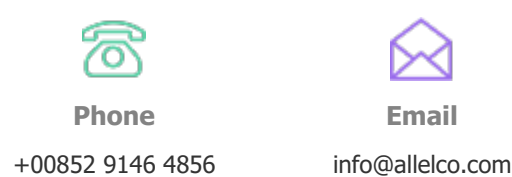
The payment method can be chosen from the methods shown below:
Wire Transfer (T/T, Bank Transfer), Western Union, Credit card, PayPal.



Your Faithful Supply Chain Partner -



Contact us if you have any questions.



Certifications & Memberships



View More

