

Image may be representation.  
See specifications for product details.



## PIC12F629T-I/SN

Manufacturer Part Number **PIC12F629T-I/SN**

Manufacturer **Microchip Technology**

Allelco Part Number **32D-PIC12F629T-I/SN**

ECAD Model PCB Symbol, Footprint & 3D Model

Parts Description **IC MCU 8BIT 1.75KB FLASH 8SOIC**

Package **8-SOIC (0.154", 3.90mm Width)**

Data sheet **[Tips N Tricks Guide.pdf](#)**

**[PIC12F629,675, PIC16F630,676 Programming.pdf](#)**

**[PIC MCU Comparator Tips n Tricks.pdf](#)**

**[PIC12F629, 675.pdf](#)**

RoHs Status **ROHS3 Compliant**

**Get a Quote**

PIC12F629T-I/SN - Microchip Technology.New Original in Stock. Download Linear Technology PIC12F629T-I/SN datasheet/specifications on AllelcoElec.com.  
Request a quote for PIC12F629T-I/SN, please send us email: [info@allelco.com](mailto:info@allelco.com)

## Specifications

PIC12F629T-I/SN Tech Specifications

PIC12F629T-I/SN - Microchip Technology technical specifications, attributes, parameters

Product Attribute	Attribute Value	Product Attribute	Attribute Value
Manufacturer	Microchip Technology	Oscillator Type	Internal
Voltage - Supply (Vcc/Vdd)	2V ~ 5.5V	Operating Temperature	-40°C ~ 85°C (TA)
Supplier Device Package	8-SOIC	Number of I/O	5
Speed	20MHz	Mounting Type	Surface Mount
Series	PIC® 12F	EEPROM Size	128 x 8
RAM Size	64 x 8	Data Converters	-
Program Memory Type	FLASH	Core Size	8-Bit
Program Memory Size	1.75KB (1K x 14)	Core Processor	PIC
Peripherals	POR, WDT	Connectivity	-
Package / Case	8-SOIC (0.154", 3.90mm Width)	Base Product Number	PIC12F629
Package	Tape & Reel (TR)		

## Parts with Similar Specifications

The three parts on the right have similar specifications to Microchip Technology PIC12F629T-I/SN

Product Attribute				
Part Number	PIC12F629T-I/SN	PIC12F635T-I/SN	PIC12F615T-I/MS	PIC12F635-I/SN
Manufacturer	Microchip Technology	Microchip Technology	Microchip Technology	Microchip Technology
Base Product Number	PIC12F629	PIC12F635	PIC12F615	PIC12F635
Peripherals	POR, WDT	Brown-out Detect/Reset, POR, WDT	Brown-out Detect/Reset, POR, PWM, WDT	Brown-out Detect/Reset, POR, WDT
Number of I/O	5	5	5	5
Core Processor	PIC	PIC	PIC	PIC
Mounting Type	Surface Mount	Surface Mount	Surface Mount	Surface Mount
Package / Case	8-SOIC (0.154", 3.90mm Width)	8-SOIC (0.154", 3.90mm Width)	8-TSSOP, 8-MSOP (0.118", 3.00mm Width)	8-SOIC (0.154", 3.90mm Width)
Core Size	8-Bit	8-Bit	8-Bit	8-Bit
Supplier Device Package	8-SOIC	8-SOIC	8-MSOP	8-SOIC
Data Converters	-	-	A/D 4x10b	-
Series	PIC® 12F	PIC® 12F	PIC® 12F	PIC® 12F
Oscillator Type	Internal	Internal	Internal	Internal
Operating Temperature	-40°C ~ 85°C (TA)	-40°C ~ 85°C (TA)	-40°C ~ 85°C (TA)	-40°C ~ 85°C (TA)
Package	Tape & Reel (TR)	Tape & Reel (TR)	Tape & Reel (TR)	Tube
EEPROM Size	128 x 8	128 x 8	-	128 x 8
Connectivity	-	-	-	-
Program Memory Type	FLASH	FLASH	FLASH	FLASH
Voltage - Supply (Vcc/Vdd)	2V ~ 5.5V	2V ~ 5.5V	2V ~ 5.5V	2V ~ 5.5V
Speed	20MHz	20MHz	20MHz	20MHz
RAM Size	64 x 8	64 x 8	64 x 8	64 x 8
Program Memory Size	1.75KB (1K x 14)	1.75KB (1K x 14)	1.75KB (1K x 14)	1.75KB (1K x 14)

## PIC12F629T-I/SN Datasheet PDF

Download PIC12F629T-I/SN pdf datasheets and Microchip Technology documentation for PIC12F629T-I/SN - Microchip Technology.

### Datasheets

[PIC12F629, 675.pdf](#)

## PCN Packaging



Label and Packing Changes 23/Sep/2015.pdf



Packing Changes 10/Oct/2016.pdf

## PCN Assembly/Origin



2.73KHz.pdf

## PCN Design/Specification



Cylindrical Battery Holders.pdf

## HTML Datasheet



Tips N Tricks Guide.pdf



PIC12F629,675, PIC16F630,676 Programming.pdf



PIC MCU Comparator Tips n Tricks.pdf

## Customers Also Interested in

### Recommended Products



**PIC12F635T-I/SN**

Microchip Technology  
IC MCU 8BIT 1.75KB FLASH 8SOIC



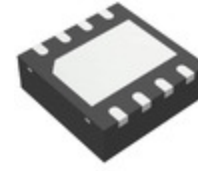
**PIC12F615T-I/MS**

Microchip Technology  
IC MCU 8BIT 1.75KB FLASH 8MSOP



**PIC12F635-I/SN**

Microchip Technology  
IC MCU 8BIT 1.75KB FLASH 8SOIC



**PIC12F675-I/MD**

Microchip Technology  
IC MCU 8BIT 1.75KB FLASH 8DFN



**PIC12F629-E/P**

Microchip Technology  
IC MCU 8BIT 1.75KB FLASH 8DIP



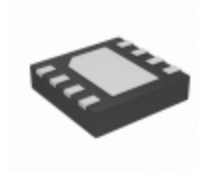
**PIC12F617-E/SN**

Microchip Technology  
IC MCU 8BIT 3.5KB FLASH 8SOIC



**PIC12F617T-I/SN**

Microchip Technology  
IC MCU 8BIT 3.5KB FLASH 8SOIC



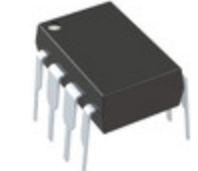
**PIC12F615T-I/MF**

Microchip Technology  
IC MCU 8BIT 1.75KB FLASH 8DFN



**PIC12F635-E/SN**

Microchip Technology  
IC MCU 8BIT 1.75KB FLASH 8SOIC



**PIC12F675-E/P**

Microchip Technology  
IC MCU 8BIT 1.75KB FLASH 8DIP



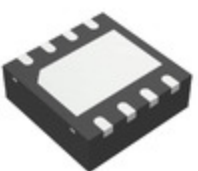
**PIC12F617-I/SN**

Microchip Technology  
IC MCU 8BIT 3.5KB FLASH 8SOIC



**PIC12F635-I/P**

Microchip Technology  
IC MCU 8BIT 1.75KB FLASH 8DIP



**PIC12F635-I/MD**

Microchip Technology  
IC MCU 8BIT 1.75KB FLASH 8DFN



**PIC12F629-I/SN**

Microchip Technology  
IC MCU 8BIT 1.75KB FLASH 8SOIC



**PIC12F629-E/SN**

Microchip Technology  
IC MCU 8BIT 1.75KB FLASH 8SOIC



**PIC12F629-I/P**

Microchip Technology  
IC MCU 8BIT 1.75KB FLASH 8DIP



**PIC12F675-E/SN**

Microchip Technology  
IC MCU 8BIT 1.75KB FLASH 8SOIC



**PIC12F615T-I/MS068**

Micrel / Microchip Technology

## Shipment

### Delivery Time

In-stock items can be shipped within 24 hours. Some parts will be arranged for delivery within 1-2 days from the date all items arrive at our warehouse. And Allelco ships order once a day at about 17:00, except Sunday. Once the goods are shipped, the estimated delivery time depends on the shipping methods and Delivery destination. The table below shows are the logistic time for some common countries.

### Delivery Cost

> Use your express account for shipment if you have one.

> Use our account for the shipment. Refer to the table below for the approximate charges.

(Different time frame / countries / package size has different price.)

### Delivery Method

> Global Common Shipment by DHL / UPS / FedEx / TNT / EMS / SF we support.

> Others more shipping ways, please get in touch with your customer manager.

Common Countries Logistic Time Reference		
Region	Country	Logistic Time(Day)
America	United States	5
	Brazil	7
Europe	Germany	5
	United Kingdom	4
	Italy	5
Oceania	Australia	6
	New Zealand	7
Asia	India	6
	Japan	7
Middle East	Israel	6

DHL & FedEx Shipment Charges Reference	
Shipment charges(KG)	Reference DHL(USD\$)
0.00kg-1.00kg	USD\$60.00
1.00kg-2.00kg	USD\$70.00
2.00kg-3.00kg	USD\$80.00

**Note:** The above table is for reference only. There may have some data bias for the uncontrollable factors.

Contact us if you have any questions.

## Payment Support

The payment method can be chosen from the methods shown below:

Wire Transfer (T/T, Bank Transfer), Western Union, Credit card, PayPal.



## Your Faithful Supply Chain Partner -



Efficient Supply Management



Cost-Saving Procurement



Fast Sourcing & Delivery

Contact us if you have any questions.



Phone

+00852 9146 4856



Email

info@allelco.com

## Certifications & Memberships



View More

Contact us

Address: Flat/Rm C 13/F Harvard Commercial Building 105-111 Thomson Road, Wan Chai, Hong Kong

Phone: +00852 9146 4856

Fax: +00852 3010 8510

Email: [info@Alleco.com](mailto:info@Alleco.com)