



Image may be representation.
See specifications for product details.



MAX295EWE+

Manufacturer Part Number	MAX295EWE+
Manufacturer	Maxim Integrated
Allelco Part Number	32D-MAX295EWE+
ECAD Model	Request Free CAD Models
Parts Description	IC FILTER 50KHZ LOWPASS 16SOIC
Package	16-SOIC (0.295", 7.50mm Width)
Data sheet	MAX291,292,295,296.pdf
RoHs Status	ROHS3 Compliant

Get a Quote

MAX295EWE+ - Analog Devices Inc./Maxim Integrated.New Original in Stock. Download Linear Technology MAX295EWE+ datasheet/specifications on AllelcoElec.com. Request a quote for MAX295EWE+, please send us email: info@allelco.com

Specifications

MAX295EWE+ Tech Specifications

MAX295EWE+ - Analog Devices Inc./Maxim Integrated technical specifications, attributes, parameters

Product Attribute	Attribute Value	Product Attribute	Attribute Value
Manufacturer	Maxim Integrated	Number of Filters	1
Voltage - Supply	4.75V ~ 11V, ±2.375V ~ 5.5V	Mounting Type	Surface Mount
Supplier Device Package	16-SOIC	Frequency - Cutoff or Center	50kHz
Series	-	Filter Type	Butterworth, Low Pass Switched Capacitor
Package / Case	16-SOIC (0.295", 7.50mm Width)	Filter Order	8th
Package	Tube	Base Product Number	MAX295

Parts with Similar Specifications

The three parts on the right have similar specifications to Analog Devices Inc./Maxim Integrated MAX295EWE+

Product Attribute				
Part Number	MAX295EWE+	MAX295EWE	MAX297EPA	MAX295CSA+
Manufacturer	Analog Devices Inc./Maxim Integrated	Analog Devices Inc./Maxim Integrated	Analog Devices Inc./Maxim Integrated	Analog Devices Inc./Maxim Integrated
Voltage - Supply	4.75V ~ 11V, ±2.375V ~ 5.5V	4.75V ~ 11V, ±2.375V ~ 5.5V	4.75V ~ 11V, ±2.375V ~ 5.5V	4.75V ~ 11V, ±2.375V ~ 5.5V
Series	-	-	-	-
Number of Filters	1	1	1	1
Filter Order	8th	8th	8th	8th
Filter Type	Butterworth, Low Pass Switched Capacitor	Butterworth, Low Pass Switched Capacitor	Elliptic, Low Pass Switched Capacitor	Butterworth, Low Pass Switched Capacitor
Package / Case	16-SOIC (0.295", 7.50mm Width)	16-SOIC (0.295", 7.50mm Width)	8-DIP (0.300", 7.62mm)	8-SOIC (0.154", 3.90mm Width)
Frequency - Cutoff or Center	50kHz	25kHz	50kHz	50kHz
Base Product Number	MAX295	MAX295	-	MAX295
Mounting Type	Surface Mount	Surface Mount	Through Hole	Surface Mount
Supplier Device Package	16-SOIC	16-SOIC	8-PDIP	8-SOIC
Package	Tube	Tube	Bulk	Tube

MAX295EWE+ Datasheet PDF

Download MAX295EWE+ pdf datasheets and Analog Devices Inc./Maxim Integrated documentation for MAX295EWE+ - Analog Devices Inc./Maxim Integrated.

Datasheets

[MAX291,292,295,296.pdf](#)

Environmental Information

[Maxim Integrated REACH.pdf](#)

[Maxim Integrated RoHS Cert.pdf](#)




Part Numbering Guide

[Part Numbering System.pdf](#)

Customers Also Interested in

Recommended Products

MAX295EWE Analog Devices Inc./Maxim Integrated IC FILTER 25KHZ LOWPASS 16SOIC	MAX297EPA Analog Devices Inc./Maxim Integrated LOWPASS SWITCHED-CAPACITOR FILTER	MAX295CSA+ Analog Devices Inc./Maxim Integrated IC FILTER 50KHZ BUTTER 8SOIC	MAX293EWE Analog Devices / Maxim Integrated	MAX296CWE-T Analog Devices / Maxim Integrated	MAX296CWE Analog Devices Inc./Maxim Integrated SWITCHED CAPACITOR FILTER, 1 FUN

MAX295EWE+T	MAX297CPA	MAX293EWE+T	MAX294CWE-T	MAX296CSA+T	MAX295CPA
Analog Devices Inc./Maxim Integrated IC FILTER 50KHZ LOWPASS 16SOIC	Analog Devices / Maxim Integrated	Analog Devices Inc./Maxim Integrated IC FILTER 25KHZ LOWPASS 16SOIC	Analog Devices / Maxim Integrated	Analog Devices Inc./Maxim Integrated IC FILTER 50KHZ LOWPASS 8SOIC	Analog Devices Inc./Maxim Integrated SWITCHED CAPACITOR FILTER, 1 FUN
					
MAX294CPA Analog Devices / Maxim Integrated	MAX296CPA Analog Devices / Maxim Integrated	MAX295CWE+T Analog Devices Inc./Maxim Integrated IC FILTER 50KHZ LOWPASS 16SOIC	MAX295CPA+ Analog Devices Inc./Maxim Integrated IC FILTER 50KHZ LOWPASS 8DIP	MAX296CPA+ Analog Devices Inc./Maxim Integrated IC FILTER 50KHZ LOWPASS 8DIP	MAX294CWE Analog Devices Inc./Maxim Integrated IC FILTER 25KHZ LOWPASS 16SOIC

Shipment

Delivery Time

In-stock items can be shipped within 24 hours. Some parts will be arranged for delivery within 1-2 days from the date all items arrive at our warehouse. And Allelco ships order once a day at about 17:00, except Sunday. Once the goods are shipped, the estimated delivery time depends on the shipping methods and Delivery destination. The table below shows are the logistic time for some common countries.

Delivery Cost

> Use your express account for shipment if you have one.

> Use our account for the shipment. Refer to the table below for the approximate charges.

(Different time frame / countries / package size has different price.)

Delivery Method

> Global Common Shipment by DHL / UPS / FedEx / TNT / EMS / SF we support.

> Others more shipping ways, please get in touch with your customer manager.

Common Countries Logistic Time Reference		
Region	Country	Logistic Time(Day)
America	United States	5
	Brazil	7
Europe	Germany	5
	United Kingdom	4
	Italy	5
Oceania	Australia	6
	New Zealand	7
Asia	India	6
	Japan	7
Middle East	Israel	6

DHL & FedEx Shipment Charges Reference	
Shipment charges(KG)	Reference DHL(USD\$)
0.00kg-1.00kg	USD\$60.00
1.00kg-2.00kg	USD\$70.00
2.00kg-3.00kg	USD\$80.00

Note: The above table is for reference only. There may have some data bias for the uncontrollable factors.

Contact us if you have any questions.

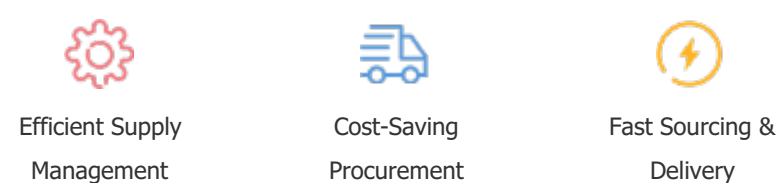
Payment Support

The payment method can be chosen from the methods shown below:

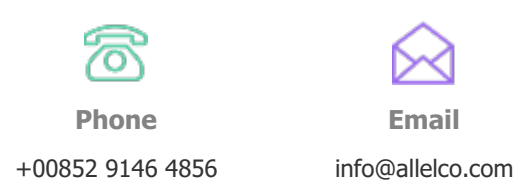
Wire Transfer (T/T, Bank Transfer), Western Union, Credit card, PayPal.



Your Faithful Supply Chain Partner -



Contact us if you have any questions.



Certifications & Memberships



[View More](#)