

Image may be representation.  
See specifications for product details.



## 25LC160A-I/SN

Manufacturer Part Number	<b>25LC160A-I/SN</b>
Manufacturer	<b>Microchip Technology</b>
Allelco Part Number	32D-25LC160A-I/SN
ECAD Model	PCB Symbol, Footprint & 3D Model
Parts Description	IC EEPROM 16KBIT SPI 10MHZ 8SOIC
Package	8-SOIC (0.154", 3.90mm Width)
Data sheet	<b>25AA160(A,B), 25LC160(A,B) Datasheet.pdf</b>
RoHs Status	ROHS3 Compliant

**Get a Quote**

25LC160A-I/SN - Microchip Technology. New Original in Stock. Download Linear Technology 25LC160A-I/SN datasheet/specifications on AllelcoElec.com.  
Request a quote for 25LC160A-I/SN, please send us email: [info@allelco.com](mailto:info@allelco.com)

### Specifications

25LC160A-I/SN Tech Specifications

25LC160A-I/SN - Microchip Technology technical specifications, attributes, parameters

Product Attribute	Attribute Value	Product Attribute	Attribute Value
Manufacturer	Microchip Technology	Mounting Type	Surface Mount
Write Cycle Time - Word, Page	5ms	Memory Type	Non-Volatile
Voltage - Supply	2.5V ~ 5.5V	Memory Size	16Kbit
Technology	EEPROM	Memory Organization	2K x 8
Supplier Device Package	8-SOIC	Memory Interface	SPI
Series	-	Memory Format	EEPROM
Package / Case	8-SOIC (0.154", 3.90mm Width)	Clock Frequency	10 MHz
Package	Tube	Base Product Number	25LC160
Operating Temperature	-40°C ~ 85°C (TA)		

### Parts with Similar Specifications

The three parts on the right have similar specifications to Microchip Technology 25LC160A-I/SN

Product Attribute				
Part Number	25LC160A-I/SN	25LC128T-I/SN	25LC160B-I/ST	25LC128T-E/ST
Manufacturer	Microchip Technology	Microchip Technology	Microchip Technology	Microchip Technology
Voltage - Supply	2.5V ~ 5.5V	2.5V ~ 5.5V	2.5V ~ 5.5V	2.5V ~ 5.5V
Technology	EEPROM	EEPROM	EEPROM	EEPROM
Supplier Device Package	8-SOIC	8-SOIC	8-TSSOP	8-TSSOP
Operating Temperature	-40°C ~ 85°C (TA)	-40°C ~ 85°C (TA)	-40°C ~ 85°C (TA)	-40°C ~ 125°C (TA)
Mounting Type	Surface Mount	Surface Mount	Surface Mount	Surface Mount
Package	Tube	Tape & Reel (TR)	Tube	Tape & Reel (TR)
Memory Interface	SPI	SPI	SPI	SPI
Memory Type	Non-Volatile	Non-Volatile	Non-Volatile	Non-Volatile
Write Cycle Time - Word, Page	5ms	5ms	5ms	5ms
Memory Size	16Kbit	128Kbit	16Kbit	128Kbit
Memory Organization	2K x 8	16K x 8	2K x 8	16K x 8
Package / Case	8-SOIC (0.154", 3.90mm Width)	8-SOIC (0.154", 3.90mm Width)	8-TSSOP (0.173", 4.40mm Width)	8-TSSOP (0.173", 4.40mm Width)
Memory Format	EEPROM	EEPROM	EEPROM	EEPROM
Base Product Number	25LC160	25LC128	25LC160	25LC128
Series	-	-	-	-
Clock Frequency	10 MHz	10 MHz	10 MHz	10 MHz

### 25LC160A-I/SN Datasheet PDF

Download 25LC160A-I/SN pdf datasheets and Microchip Technology documentation for 25LC160A-I/SN - Microchip Technology.

#### Datasheets

25AA160(A,B), 25LC160(A,B) Datasheet.pdf

#### PCN Packaging

Label and Packing Changes 23/Sep/2015.pdf

Packing Changes 10/Oct/2016.pdf

#### PCN Assembly/Origin

Manufacturing Change 07/Apr/2022.pdf

#### PCN Design/Specification

Multiple Devices Datasheet Update 18/Aug/2014.pdf

## Customers Also Interested in

### Recommended Products



**25LC128T-I/SN**  
Microchip Technology  
IC EEPROM 128KBIT SPI 8SOIC



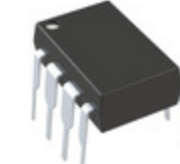
**25LC160B-I/ST**  
Microchip Technology  
IC EEPROM 16KBIT SPI 8TSSOP



**25LC128T-E/ST**  
Microchip Technology  
IC EEPROM 128KBIT SPI 8TSSOP



**25LC160A-I/P**  
Microchip Technology  
IC EEPROM 16KBIT SPI 10MHZ 8DIP



**25LC160/P**  
Microchip Technology  
IC EEPROM 16KBIT SPI 2MHZ 8DIP



**25LC160B-I/MS**  
Microchip Technology  
IC EEPROM 16KBIT SPI 10MHZ 8MSOP



**25LC160BT-E/ST**  
Microchip Technology  
IC EEPROM 16KBIT SPI 8TSSOP



**25LC160BT-E/SN**  
Microchip Technology  
IC EEPROM 16KBIT SPI 10MHZ 8SOIC



**25LC160AT-I/ST**  
Microchip Technology  
IC EEPROM 16KBIT SPI 8TSSOP



**25LC160BT-I/MS**  
Microchip Technology  
IC EEPROM 16KBIT SPI 10MHZ 8MSOP



**25LC160AT-I/SN**  
Microchip Technology  
IC EEPROM 16KBIT SPI 10MHZ 8SOIC



**25LC128T-I/ST**  
Microchip Technology  
IC EEPROM 128KBIT SPI 8TSSOP



**25LC128T-E/SN**  
Microchip Technology  
IC EEPROM 128KBIT SPI 8SOIC



**25LC160-I/SN**  
Microchip Technology  
IC EEPROM 16KBIT SPI 2MHZ 8SOIC



**25LC160/SN**  
Microchip Technology  
IC EEPROM 16KBIT SPI 2MHZ 8SOIC



**25LC160-I/P**  
Microchip Technology  
IC EEPROM 16KBIT SPI 2MHZ 8DIP



**25LC160B-I/SN**  
Microchip Technology  
IC EEPROM 16KBIT SPI 10MHZ 8SOIC



**25LC160B-E/SN**  
Microchip Technology  
IC EEPROM 16KBIT SPI 10MHZ 8SOIC

## Shipment

### Delivery Time

In-stock items can be shipped within 24 hours. Some parts will be arranged for delivery within 1-2 days from the date all items arrive at our warehouse. And Allelco ships order once a day at about 17:00, except Sunday. Once the goods are shipped, the estimated delivery time depends on the shipping methods and Delivery destination. The table below shows are the logistic time for some common countries.

### Delivery Cost

> Use your express account for shipment if you have one.

> Use our account for the shipment. Refer to the table below for the approximate charges.

(Different time frame / countries / package size has different price.)

### Delivery Method

> Global Common Shipment by DHL / UPS / FedEx / TNT / EMS / SF we support.

> Others more shipping ways, please get in touch with your customer manager.

Common Countries Logistic Time Reference

Region	Country	Logistic Time(Day)
America	United States	5
	Brazil	7
Europe	Germany	5
	United Kingdom	4
	Italy	5
Oceania	Australia	6
	New Zealand	7
Asia	India	6
	Japan	7
Middle East	Israel	6

DHL & FedEx Shipment Charges Reference

Shipment charges(KG)	Reference DHL(USD\$)
0.00kg-1.00kg	USD\$60.00
1.00kg-2.00kg	USD\$70.00
2.00kg-3.00kg	USD\$80.00

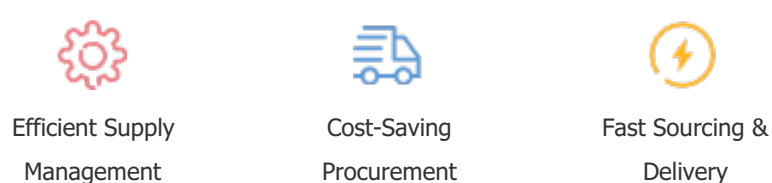
Note: The above table is for reference only. There may have some data bias for the uncontrollable factors.  
Contact us if you have any questions.

### Payment Support

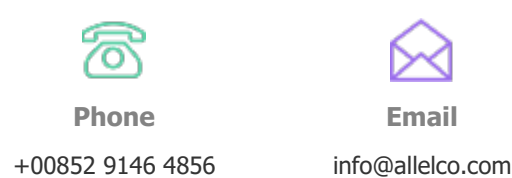
The payment method can be chosen from the methods shown below:  
Wire Transfer (T/T, Bank Transfer), Western Union, Credit card,  
PayPal.



### Your Faithful Supply Chain Partner -



Contact us if you have any questions.



### Certifications & Memberships



View More