

Image may be representation.
See specifications for product details.



XC7A100T-1FGG676C

Manufacturer Part Number	XC7A100T-1FGG676C
Manufacturer	AMD Xilinx
Allelco Part Number	32D-XC7A100T-1FGG676C
ECAD Model	Request Free CAD Models
Parts Description	IC FPGA 300 I/O 676FBGA
Package	676-BGA
Data sheet	Artix-7 FPGAs Brief.pdf
RoHs Status	ROHS3 Compliant

Get a Quote

XC7A100T-1FGG676C - AMD.New Original in Stock. Download Linear Technology XC7A100T-1FGG676C datasheet/specifications on AllelcoElec.com.
Request a quote for XC7A100T-1FGG676C, please send us email: info@allelco.com

Specifications

XC7A100T-1FGG676C Tech Specifications
XC7A100T-1FGG676C - AMD technical specifications, attributes, parameters

Product Attribute	Attribute Value	Product Attribute	Attribute Value
Manufacturer	AMD Xilinx	Operating Temperature	0°C ~ 85°C (TJ)
Voltage - Supply	0.95V ~ 1.05V	Number of Logic Elements/Cells	101440
Total RAM Bits	4976640	Number of LABs/CLBs	7925
Supplier Device Package	676-FBGA (27x27)	Number of I/O	300
Series	Artix-7	Mounting Type	Surface Mount
Package / Case	676-BGA	Base Product Number	XC7A100
Package	Tray		

Parts with Similar Specifications

The three parts on the right have similar specifications to AMD XC7A100T-1FGG676C

Product Attribute				
Part Number	XC7A100T-1FGG676C	XC7A100T-2CSG324I	XC7A100T-1FGG676I	XC7A100T-1FGG484C
Manufacturer	AMD	AMD	AMD	AMD
Operating Temperature	0°C ~ 85°C (TJ)	-40°C ~ 100°C (TJ)	-40°C ~ 100°C (TJ)	0°C ~ 85°C (TJ)
Package	Tray	Tray	Tray	Tray
Mounting Type	Surface Mount	Surface Mount	Surface Mount	Surface Mount
Supplier Device Package	676-FBGA (27x27)	324-CSPBGA (15x15)	676-FBGA (27x27)	484-FBGA (23x23)
Number of LABs/CLBs	7925	7925	7925	7925
Number of I/O	300	210	300	285
Series	Artix-7	Artix-7	Artix-7	Artix-7
Package / Case	676-BGA	324-LFBGA, CSPBGA	676-BGA	484-BBGA
Voltage - Supply	0.95V ~ 1.05V	0.95V ~ 1.05V	0.95V ~ 1.05V	0.95V ~ 1.05V
Number of Logic Elements/Cells	101440	101440	101440	101440
Total RAM Bits	4976640	4976640	4976640	4976640
Base Product Number	XC7A100	XC7A100	XC7A100	XC7A100

XC7A100T-1FGG676C Datasheet PDF

Download XC7A100T-1FGG676C pdf datasheets and AMD documentation for XC7A100T-1FGG676C - AMD.

Datasheets

[Artix-7 FPGAs Brief.pdf](#)



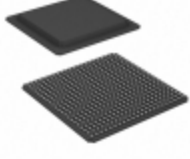
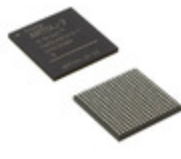
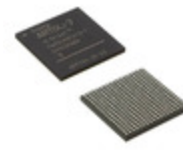
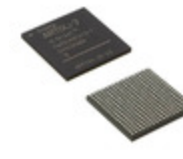
Environmental Information

[Xilinx REACH211 Cert.pdf](#)

Customers Also Interested in

Recommended Products

XC7A100T-2CSG324I	XC7A100T-1FGG676I	XC7A100T-1FGG484C	XC7A100T-2FGG484I	XC79989DR2	XC7A100T-2FGG676C
AMD IC FPGA 210 I/O 324CSBGA	AMD IC FPGA 300 I/O 676FBGA	AMD IC FPGA 285 I/O 484FBGA	AMD IC FPGA 285 I/O 484FBGA	MOTOROLA	AMD IC FPGA 300 I/O 676FBGA

XC7A100T-1FTG256C AMD IC FPGA 170 I/O 256FTBGA	XC7A100T-2FG676I AMD Xilinx	XC79197D MOT	XC79970FBR2 MOTOROLA	XC79883VHR2 MOTOROLA	XC7A100T-2FGG484C AMD IC FPGA 285 I/O 484FBGA
	 NO PICTURE				
XC7A100T-1FTG256I AMD IC FPGA 170 I/O 256FTBGA	XC79898VHR2 MOT	XC7A100T-1FGG484I AMD IC FPGA 285 I/O 484FBGA	XC7A100T-1CSG324I AMD IC FPGA 210 I/O 324CSBGA	XC7A100T-2CSG324C AMD IC FPGA 210 I/O 324CSBGA	XC7A100T-1CSG324C AMD IC FPGA 210 I/O 324CSBGA

Shipment

Delivery Time

In-stock items can be shipped within 24 hours. Some parts will be arranged for delivery within 1-2 days from the date all items arrive at our warehouse. And Allelco ships order once a day at about 17:00, except Sunday. Once the goods are shipped, the estimated delivery time depends on the shipping methods and Delivery destination. The table below shows are the logistic time for some common countries.

Delivery Cost

> Use your express account for shipment if you have one.

> Use our account for the shipment. Refer to the table below for the approximate charges.

(Different time frame / countries / package size has different price.)

Delivery Method

> Global Common Shipment by DHL / UPS / FedEx / TNT / EMS / SF we support.

> Others more shipping ways, please get in touch with your customer manager.

Common Countries Logistic Time Reference		
Region	Country	Logistic Time(Day)
America	United States	5
	Brazil	7
Europe	Germany	5
	United Kingdom	4
	Italy	5
Oceania	Australia	6
	New Zealand	7
Asia	India	6
	Japan	7
Middle East	Israel	6

DHL & FedEx Shipment Charges Reference	
Shipment charges(KG)	Reference DHL(USD\$)
0.00kg-1.00kg	USD\$60.00
1.00kg-2.00kg	USD\$70.00
2.00kg-3.00kg	USD\$80.00

Note: The above table is for reference only. There may have some data bias for the uncontrollable factors.

Contact us if you have any questions.

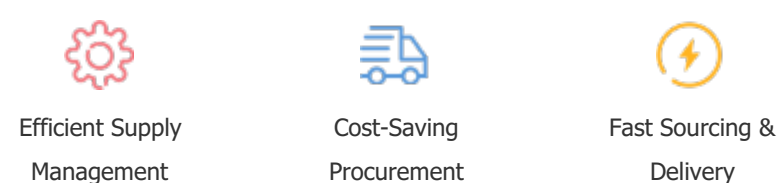
Payment Support

The payment method can be chosen from the methods shown below:

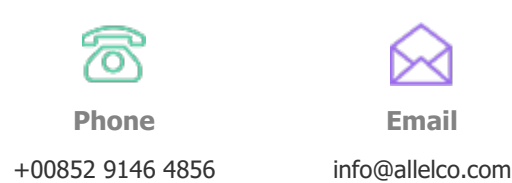
Wire Transfer (T/T, Bank Transfer), Western Union, Credit card, PayPal.



Your Faithful Supply Chain Partner -



Contact us if you have any questions.



Certifications & Memberships



[View More](#)